

PRELIMINARY DRAWINGS FOR
ENGINEER'S APPROVAL ONLY

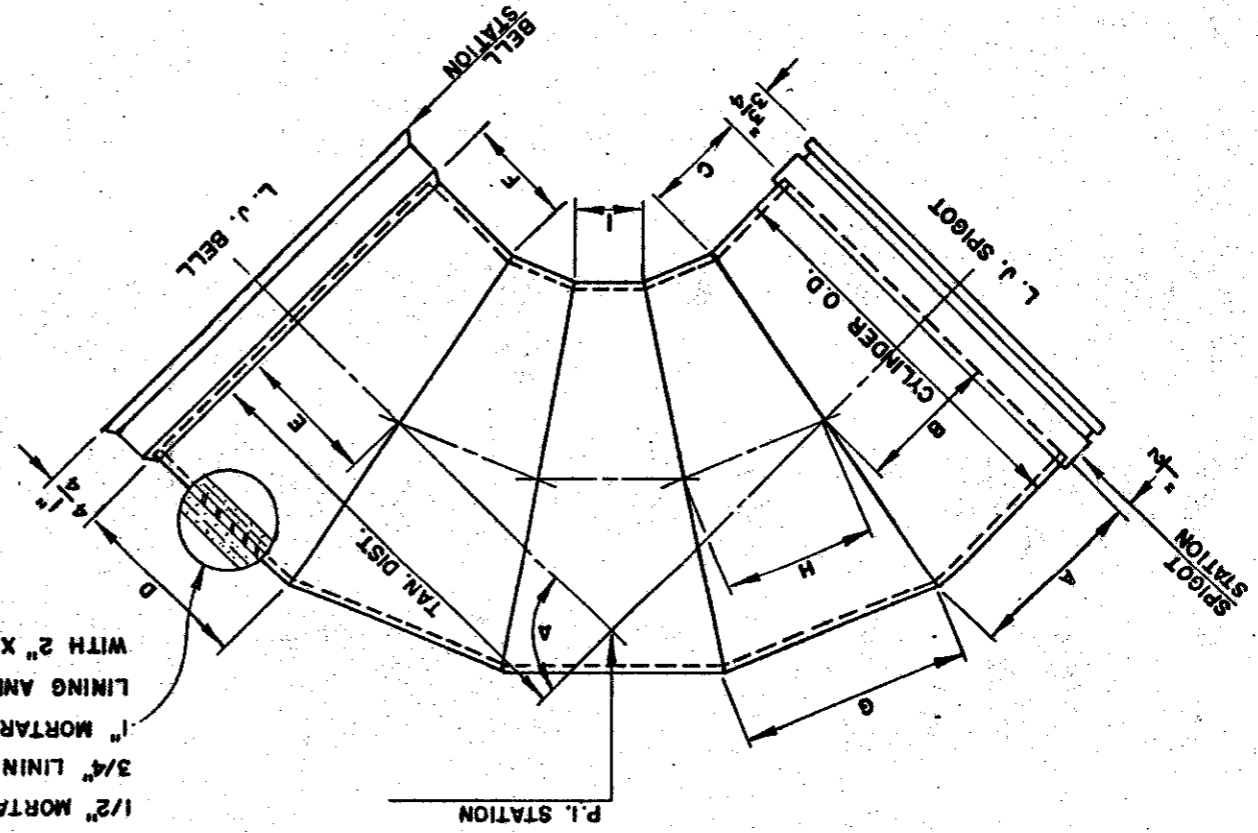
Date 4-8-74 By BH

- C.Y.L. FOREMAN
- LINE/COAT FOREMAN
- FIELD REP.
- COTTON MEYER
- LANCE REBSTOCK
- QUALITY CONTROL
- YARD FOREMAN
- OTHER
- SPECIALS FOREMAN
- CONSTRUCTORS TRANS
- RAY DAVIS
- ENG. / EST.
- SALES
- CONTRACTOR
- ENGINEER

NO.	DATE	BY	REVISION

JOB: 5281
SHT. 12-124 OF
U.S. PIPE & FOUNDRY CO.
CONCRETE PIPE DIVISION

DR. BY RS
JOB 5281
DATE 4-4-74
ADDISON, TEXAS
FIVE PIECE BEND DETAIL



1/2" MORTAR LINING ON 1/4" THRU 16"
3/4" LINING ON 16" AND ABOVE
1" MORTAR COATING—ALL SIZES
LINING AND COATING REINFORCED
WITH 2" X 4" X 13 GA. WIRE MESH

TABLE FOR BENDS

JOINT NO.	ANGLE	TAN. DIST.	STATION P.I.	STATION BELL	NOM. SIZE	CYL. O.B.	CYL. THK.	MEAN. CIRCUM.	A	B	C	D	E	F	G	H	12"	
12-B	90°-00'	43'11.6"	3407.50	YES	3411.44	24"	253/4"	3/16"	80 5/16"	11 1/8"	8 9/16"	6"	11 1/8"	8 9/16"	6"	22 1/4"	17 1/8"	12"

FILED
4-5-74