

GENERAL NOTES

1. All water mains shall be SDR 18 - PVC water pipe.
2. All water mains shall have a minimum cover below finished grades as follows: 6" - 8" - 48", 12" - 60", or as required to clear other utilities.
3. The location of all utilities are taken from existing public records. The exact location must be determined by the Contractor. It is the duty of the contractor to ascertain whether any other facilities (additional), other than those on the plans may be present.
4. All utility trenches under proposed paving shall be backfilled and compacted to 90% Standard Proctor Density.
5. All manholes, cleanouts, valve boxes, fire hydrants, etc., must be adjusted to proper line and grade by the Contractor after placing of permanent paving.
6. All work and materials shall be in accordance with the City of Addison Standard Specifications.
7. All PVC water and sanitary sewer mains and services shall be wrapped with vinyl coated copper tracer wire.
8. All fire hydrants and valves shall be Mueller brand.
9. All sanitary sewer mains shall be SDR 35 PVC sanitary sewer pipe.
10. Grades over Water, Sanitary Sewer, and Storm Sewer trenches shall be returned to within 0.1 foot of the existing grade at time of excavation.

LEGEND

- Existing Water
- Proposed Water
- Existing Sanitary Sewer
- Proposed Sanitary Sewer
- Existing Underground Telephone Cable
- Existing Gas Main
- Existing Concrete Pavement
- Proposed Curb Lines
- Existing Storm Sewer
- Proposed Storm Sewer
- Proposed Light Standard

BENCH MARK

1. 0" Top of curb at radius return on Inwood Road at southeast corner of intersection of Inwood Road & Ball Line Road. Elev. 635.49
2. 0" Top of curb 30'± south of radius return on Landmark Boulevard at southwest corner of intersection of Landmark Blvd. & Ball Line Road. Elev. 639.64

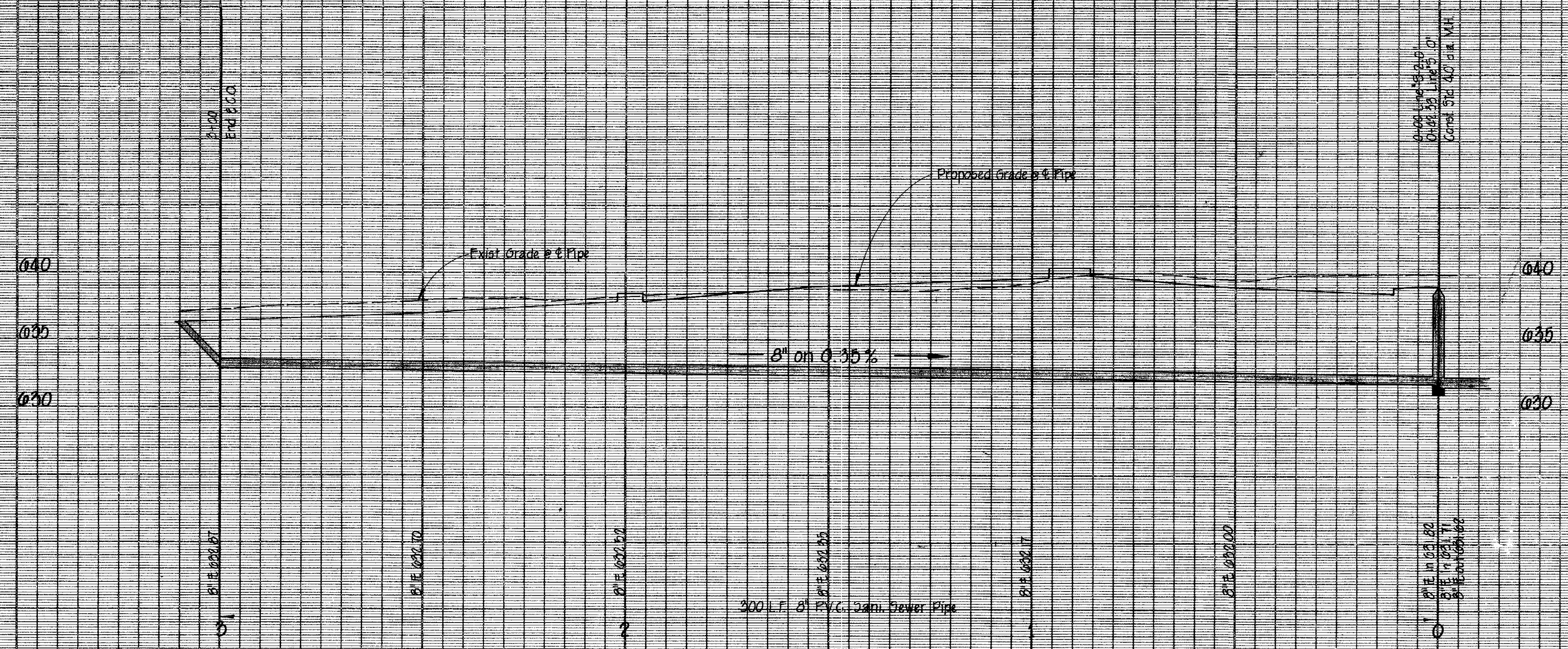
AS BUILT
DATE 8-16-82

- Revised 5-18-82 - Eliminate Core Encasement Route 8" Water
- Revised - 4-12-82 - Addendum No. 2
- Revised - 4-9-82 - Addendum No. 1

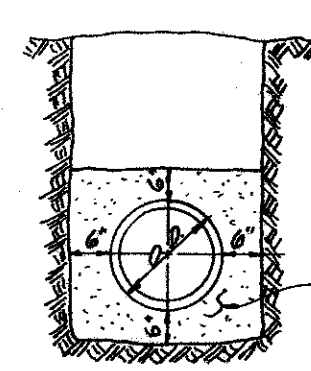
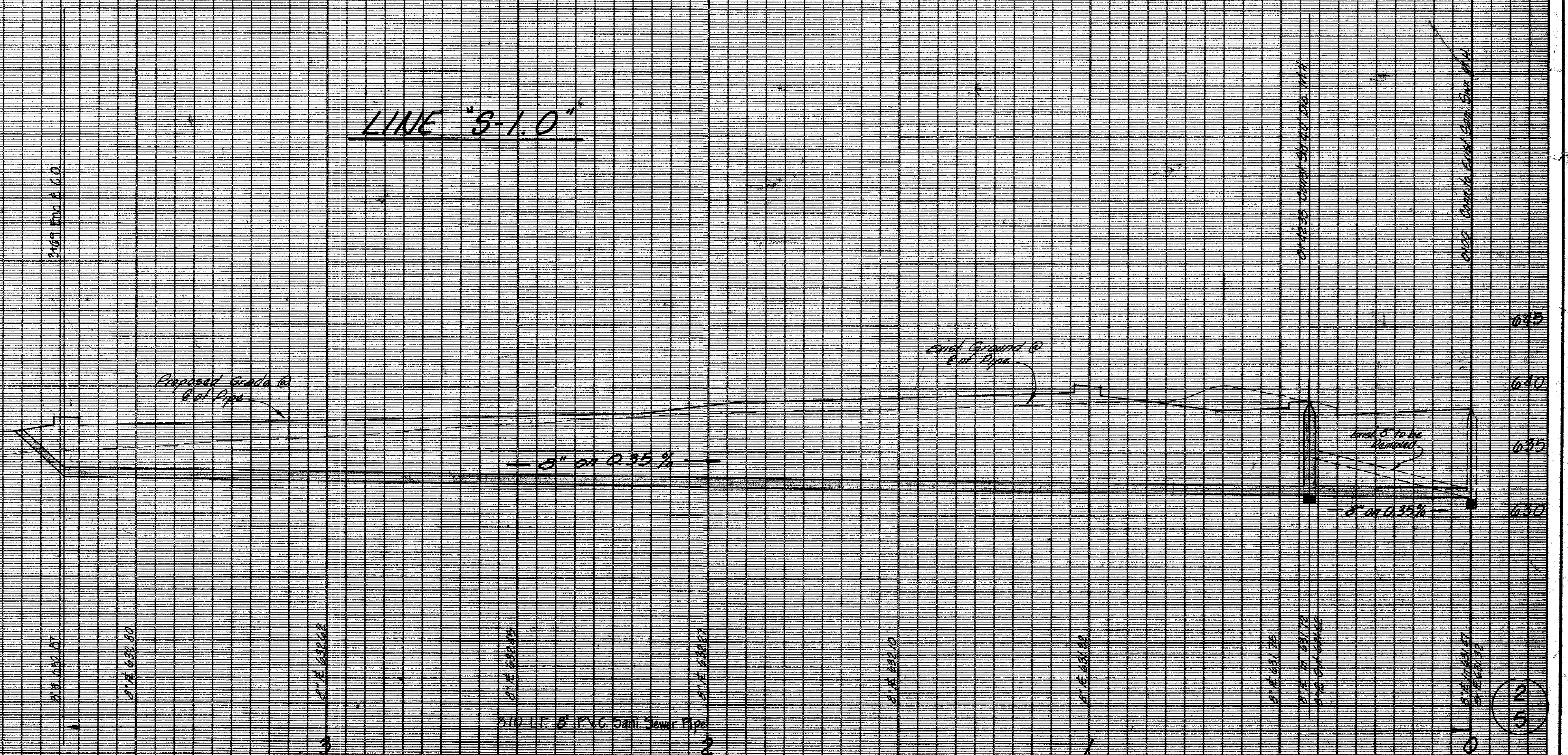
| | | | | | |
|---|-------|------------|----------|--------|-------------|
| WATER, SANITARY SEWER & STORM SEWER PLAN | | | | | |
| SITE 6, BLOCK 1 | | | | | |
| QUORUM WEST | | | | | |
| CITY OF ADDISON, TEXAS | | | | | |
| DESIGN | DRAWN | DATE | SCALE | NOTES | PROJECT NO. |
| R.L. Goodson, Jr., Inc. | | March 1982 | 1" = 20' | R.L.G. | 82 20 |

1
5

LINE "5-2.0"



LINE "3-1.0"



EMBEDMENT FOR WATER & SANITARY SEWER PIPE

BENCH MARK

1. 0" Top of curb at radius return on Inwood Road at southeast corner of intersection of Inwood Road & Bull Line Road. Elev. 635.49
2. 0" Top of curb 30' E south of radius return on Landmark Boulevard at southwest corner of intersection of Landmark Blvd & Bull Line Road. Elev. 639.64

AS BUILT
DATE 8-16-82

SANITARY SEWER PROFILE

SITE 6, BLOCK 1

QUORUM WEST

RAYMOND L. GOODSON JR. INC. ENGINEERS

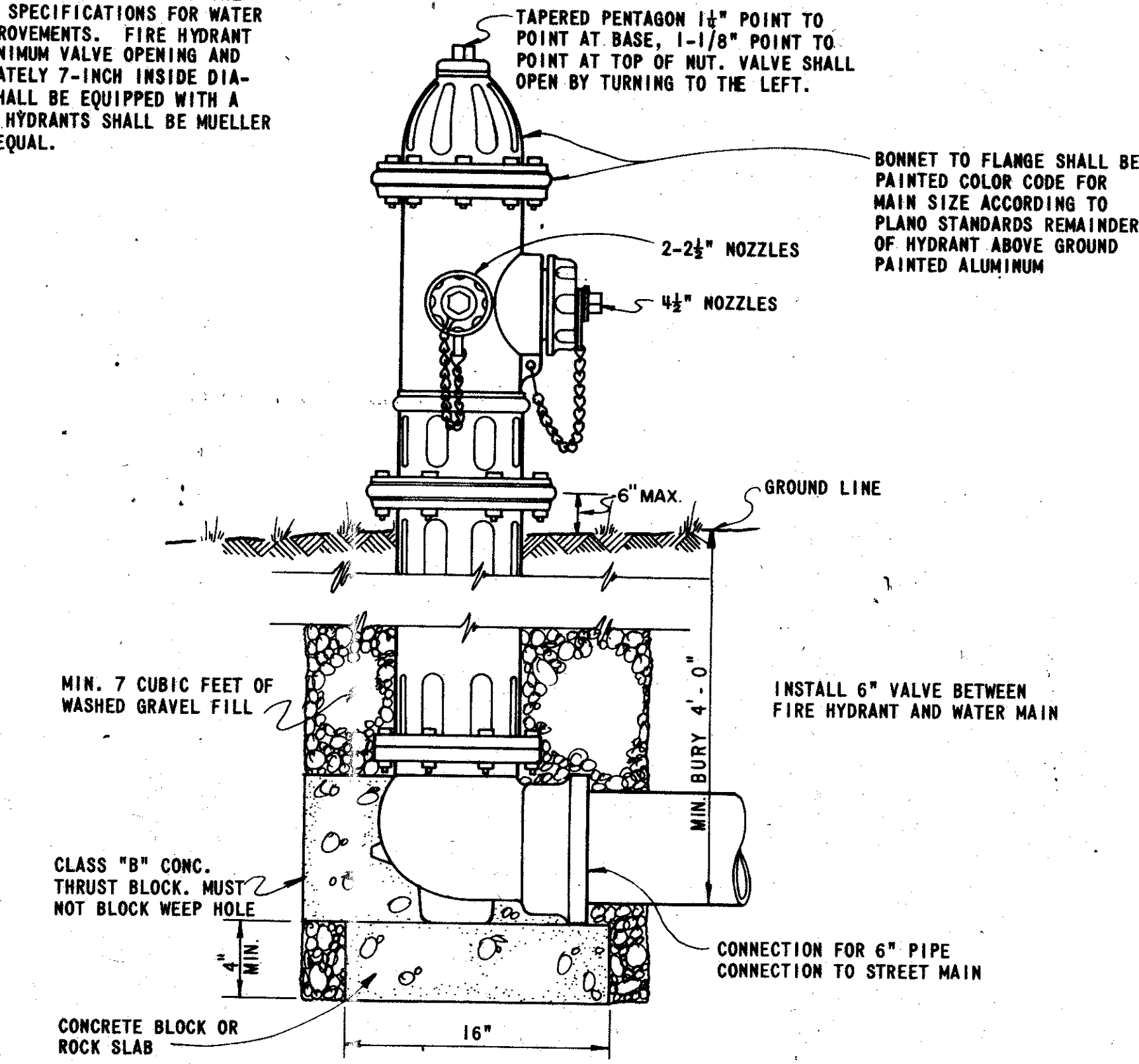
CITY OF ADDISON, TEXAS

| DESIGN | DRAWN | DATE | SCALE | NOTES | FILE | NO. |
|-------------------------|-------|------------|---------------------|--------|------|-----|
| R.L. Goodson, Jr., Inc. | | MARCH 1982 | 1"=20' H 1"=6' V | R.L.G. | 82 | 20 |

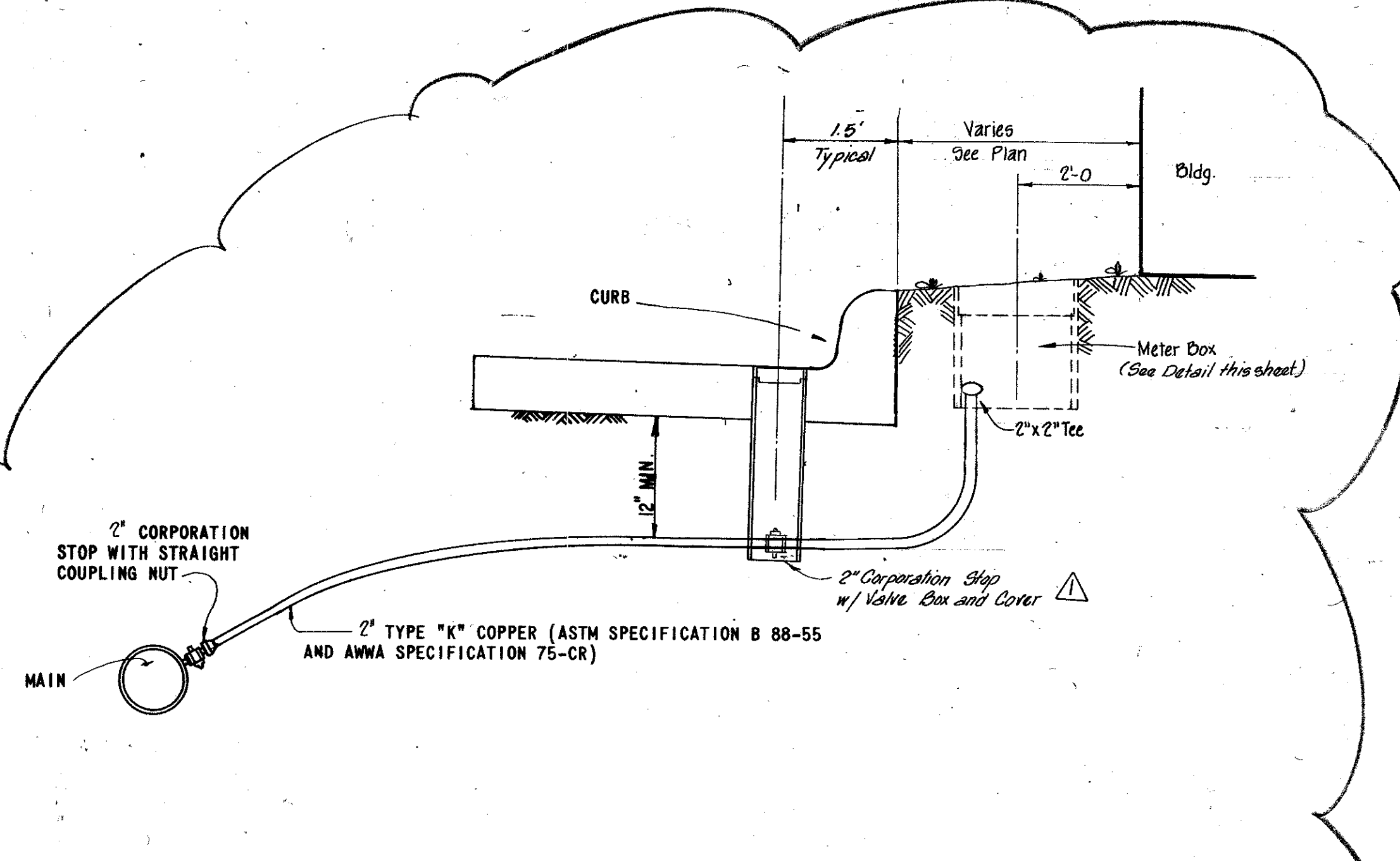
11978 W.

NOTE:

IN GENERAL, ALL FIRE HYDRANTS SHALL CONFORM TO AWMA STANDARD SPECIFICATIONS FOR FIRE HYDRANTS FOR ORDINARY WATER WORKS SERVICE, C-502-73, EXCEPT FOR CHANGES OR ADDITIONS OUTLINED IN THE CITY OF ADDISON STANDARD SPECIFICATIONS FOR WATER AND SANITARY SEWER IMPROVEMENTS. FIRE HYDRANT SHALL HAVE A 5-INCH MINIMUM VALVE OPENING AND WITH A BARREL APPROXIMATELY 7-INCH INSIDE DIAMETER. ALL HYDRANTS SHALL BE EQUIPPED WITH A BREAKAWAY FLANGE. ALL HYDRANTS SHALL BE MUELLER CENTURION OR APPROVED EQUAL.

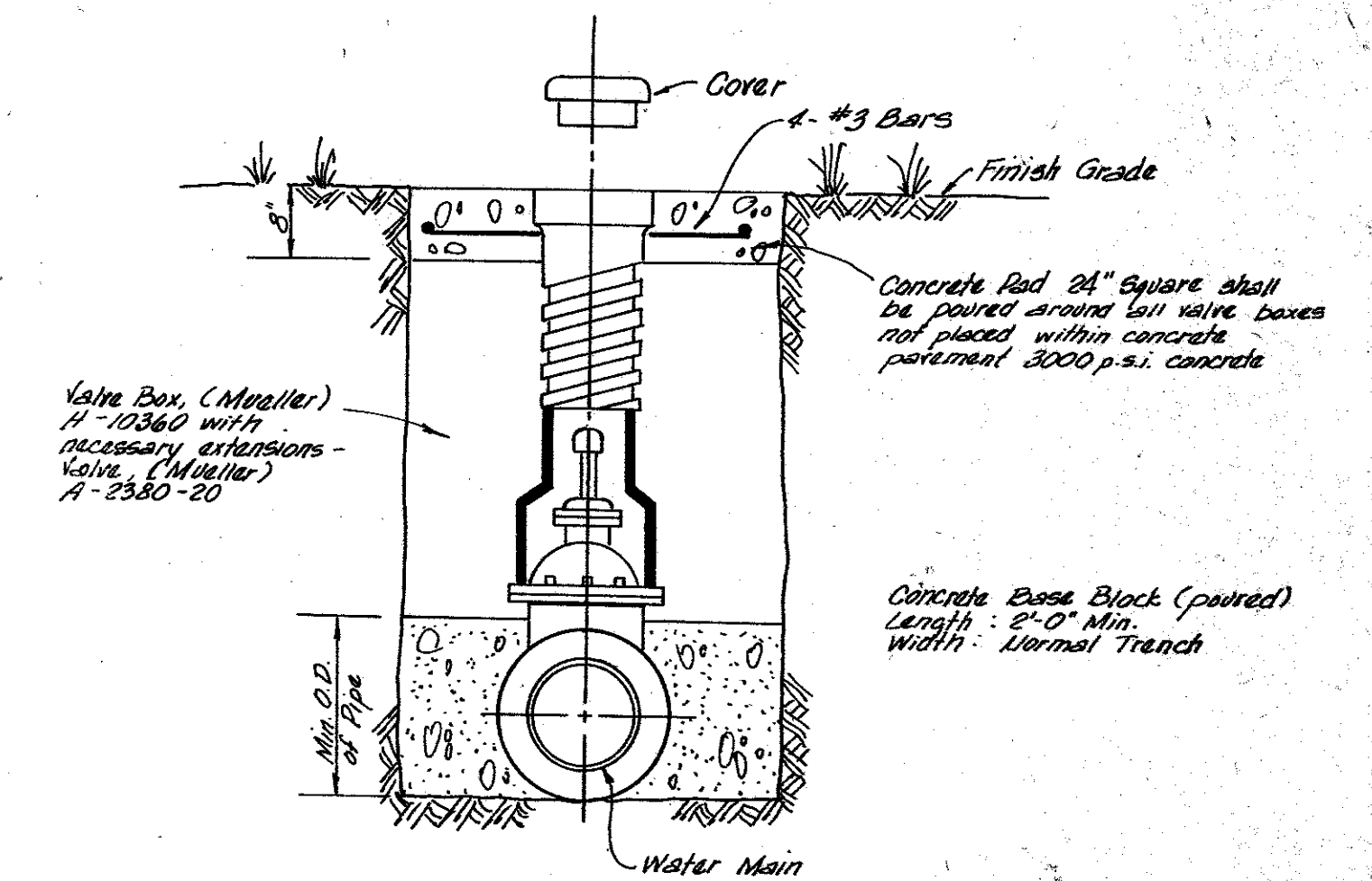


TYPICAL FIRE HYDRANT INSTALLATION



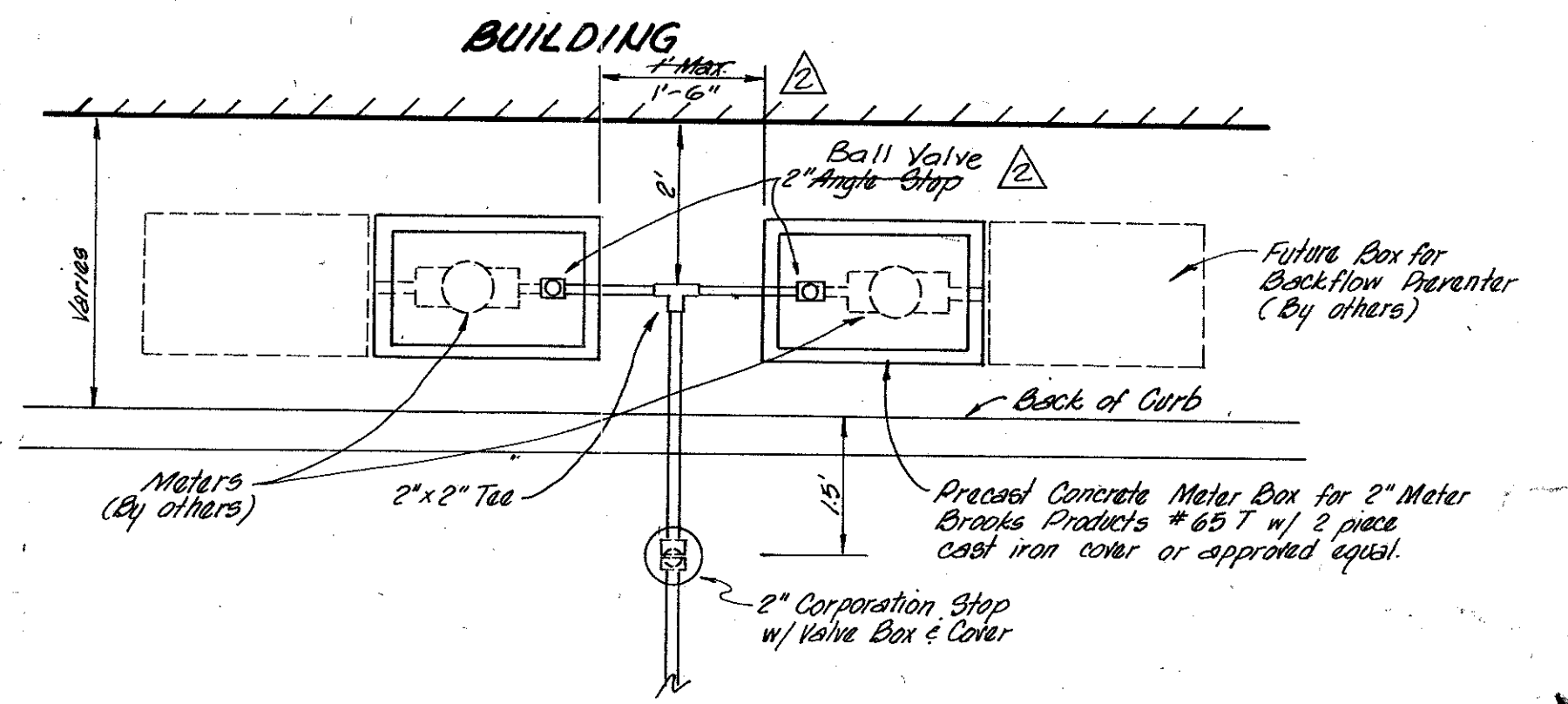
TYPICAL SERVICE CONNECTION WITH METER BOX

| MUELLER TYPE K COPPER SERVICE PIPE SOFT ANNEALED | DOUBLE STRAP BRONZE SERVICE SADDLE WITH IRON PIPE THREADS | MUELLER CORPORATION STOP | MUELLER ANGLE STOP | BASS & HAYS SLOTTED METER BOX |
|--|---|--------------------------|--------------------|-------------------------------|
| 1 INCH | 1 1/2 INCH | H-15000 | H-14255 | 34AS |
| 1 1/2 INCH | 2 INCH | H-15025 | H-14276 | 55 A |
| 2 INCH | | H-15025 | H-14276 | 55 A |



Note: Gate Valves shall conform to A.W.W.A. specifications 0-500-71, and shall be as manufactured by Mueller Company.

TYPICAL VALVE SETTING AND BOX



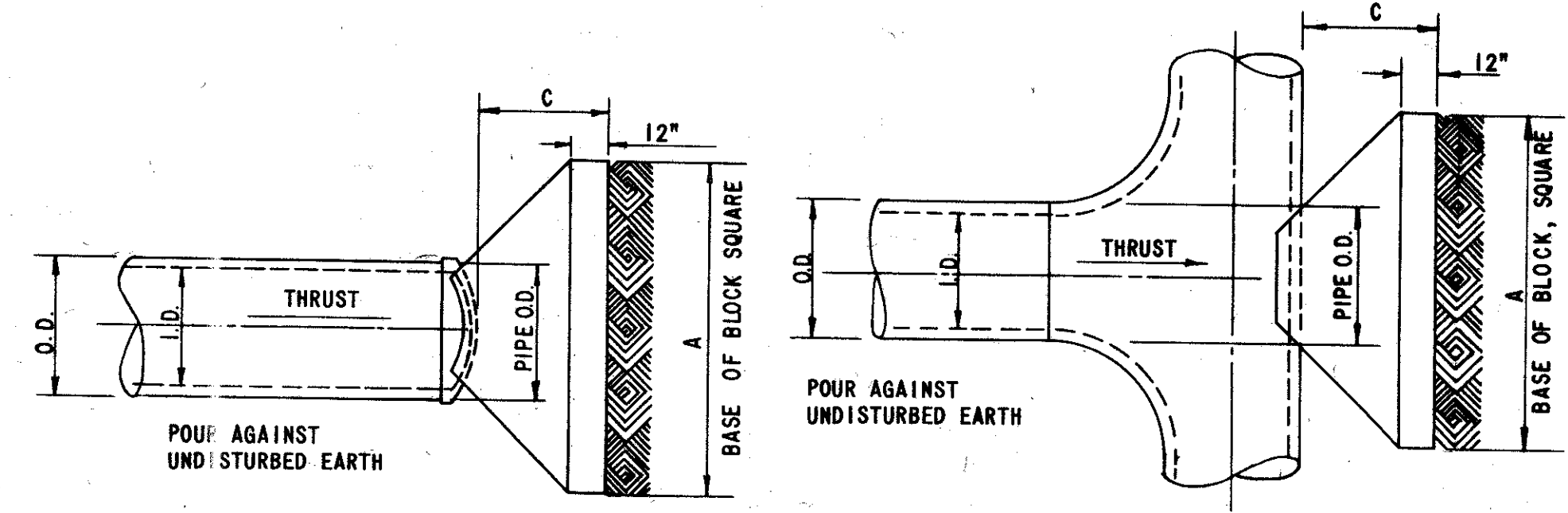
PLAN OF TYPICAL WATER SERVICE

GENERAL NOTES:

ALL CALCULATIONS ARE BASED ON TOTAL INTERNAL PRESSURE OF 150 PSI.
 ALLOWABLE SOIL BEARING PRESSURES MUST BE AT LEAST ONE TON PER SQUARE FOOT FOR THE THRUST BLOCKS SHOWN. IN SOILS OF LESSER CAPACITY, INCREASE SIZE AND BEARING AREA PROPORTIONATELY. VOLUMES OF VERTICAL BEND THRUST BLOCKS ARE NET VOLUMES OF CONCRETE TO BE FURNISHED, AND THE CORRESPONDING WEIGHT OF THE CONCRETE (AT 4,000# C.Y.) EQUALS THE VERTICAL COMPONENT OF THRUST ON THE VERTICAL BEND. ALL BEARING SURFACES OF THRUST BLOCKS SHALL BE POURED AGAINST UNDISTURBED EARTH.
 CONCRETE FOR BLOCKING SHALL BE 2,000# CONCRETE.
 DIMENSIONS MAY BE VARIED AS REQUIRED BY FIELD CONDITIONS WHERE AND AS DIRECTED BY THE ENGINEER, BUT SHALL NOT BE LESS THAN THE DIMENSIONS SHOWN HERE.

| I.D. IN INCHES | 11.25° | 15° | 22.50° | 30° | 45° | 60° | 75° | 90° |
|----------------|--------|-------|--------|-------|-------|-------|-------|-------|
| 12 | | | | | | | | |
| 14 | | | | | | | | |
| 16 | 2.94 | 3.90 | 5.78 | 7.54 | 10.66 | 13.06 | 14.56 | 15.08 |
| 18 | 3.72 | 4.94 | 7.30 | 9.54 | 13.50 | 16.52 | 18.42 | 19.08 |
| 20 | 4.60 | 6.10 | 9.02 | 11.78 | 16.66 | 20.40 | 22.76 | 23.56 |
| 24 | 6.62 | 8.78 | 12.98 | 16.96 | 23.98 | 29.38 | 32.76 | 33.92 |
| 30 | 10.34 | 13.72 | 20.28 | 26.52 | 37.50 | 45.92 | 51.22 | 53.02 |

| I.D. | A | C | THRUST |
|------|------|------|--------|
| UK+T | FT. | FT. | TONS |
| 12" | | | |
| 14" | | | |
| 16" | 3.87 | 1.57 | 15.08 |
| 18" | 4.37 | 1.77 | 19.09 |
| 20" | 4.86 | 1.97 | 23.56 |
| 24" | 5.82 | 2.36 | 33.93 |
| 30" | 7.28 | 2.95 | 53.01 |



PLAN OF PLUG THRUST BLOCK **PLAN OF TEE THRUST BLOCK**

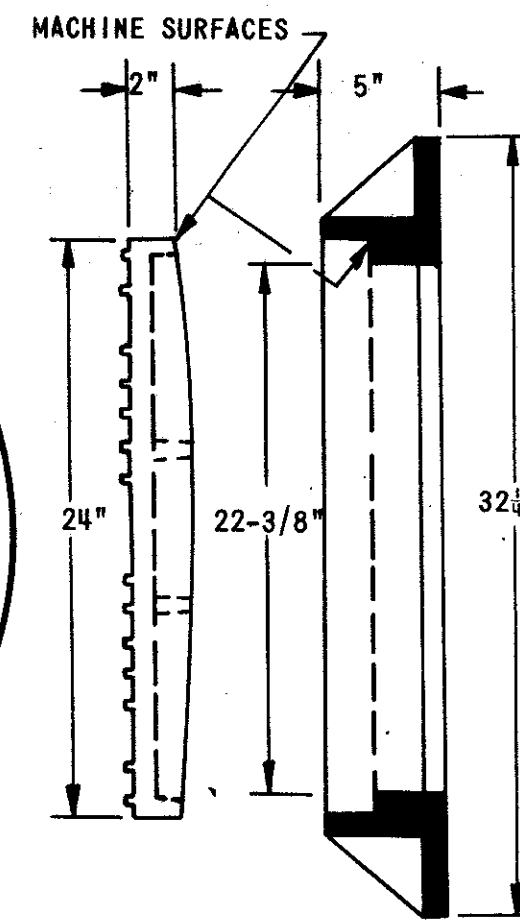
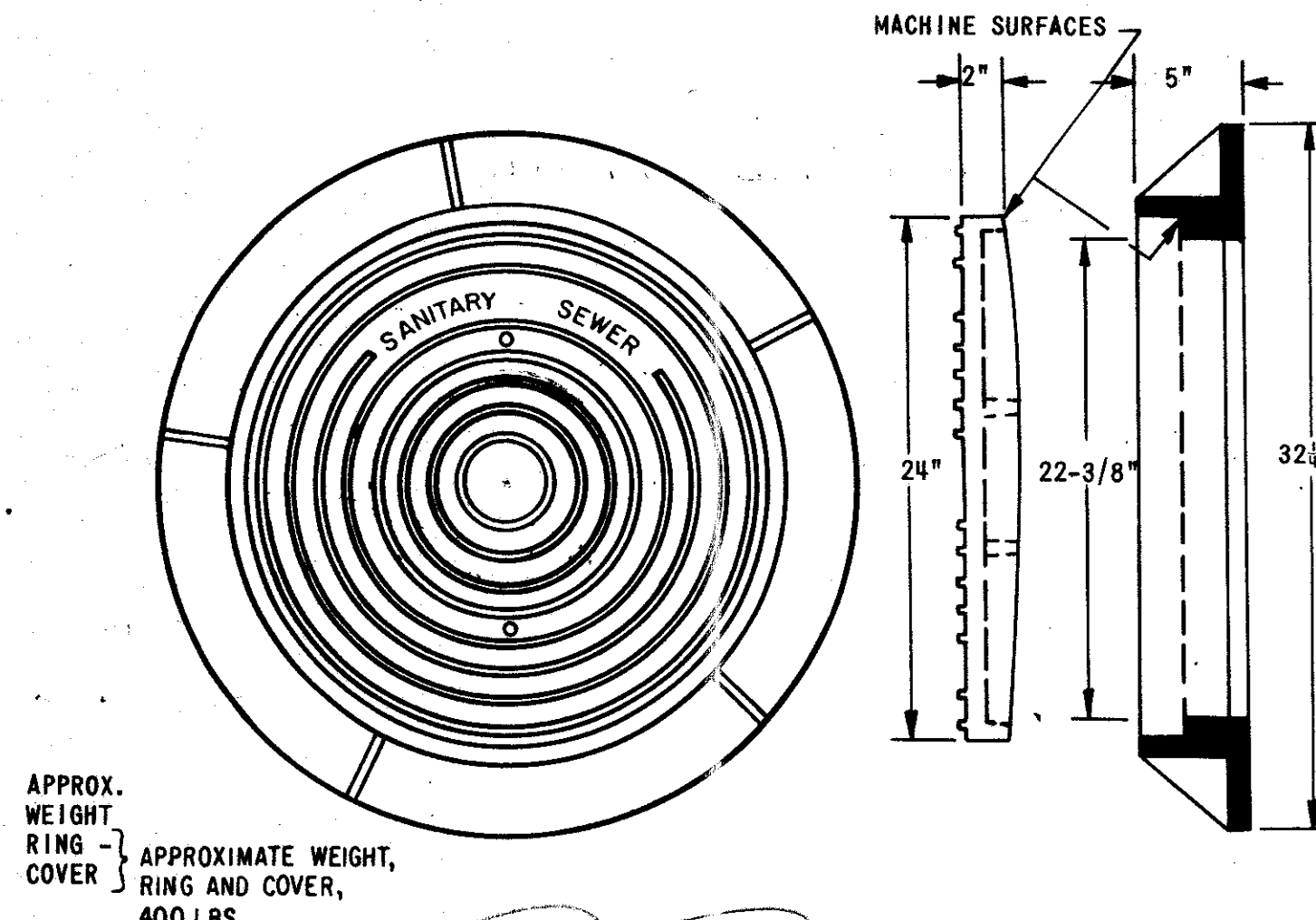
TYPICAL PLUG & TEE THRUST BLOCKS

AS BUILT
 DATE 8-16-82

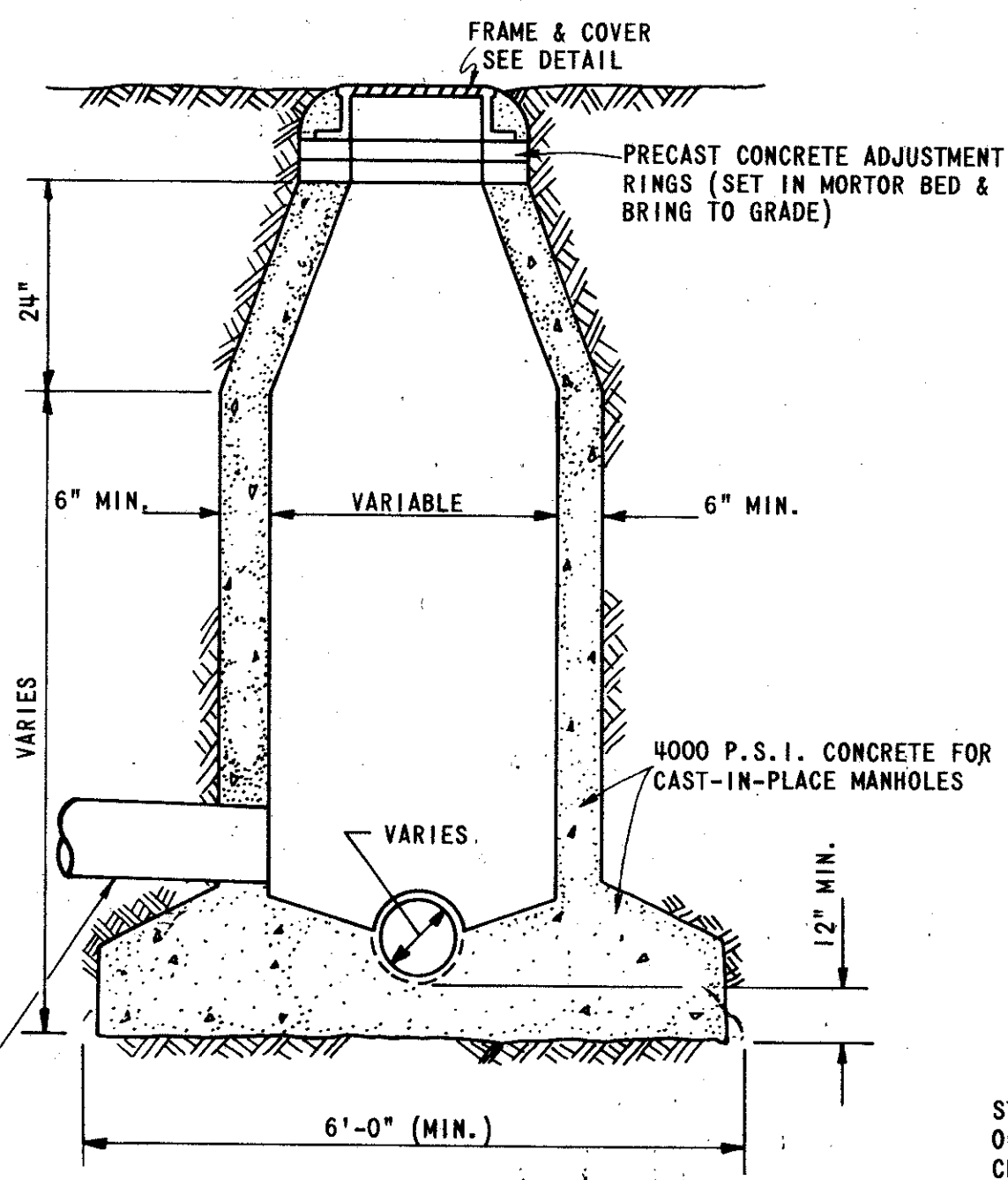
Revised 8-16-82 - As-Built
 Revised 4-9-82 - Addendum No. 1

3/5

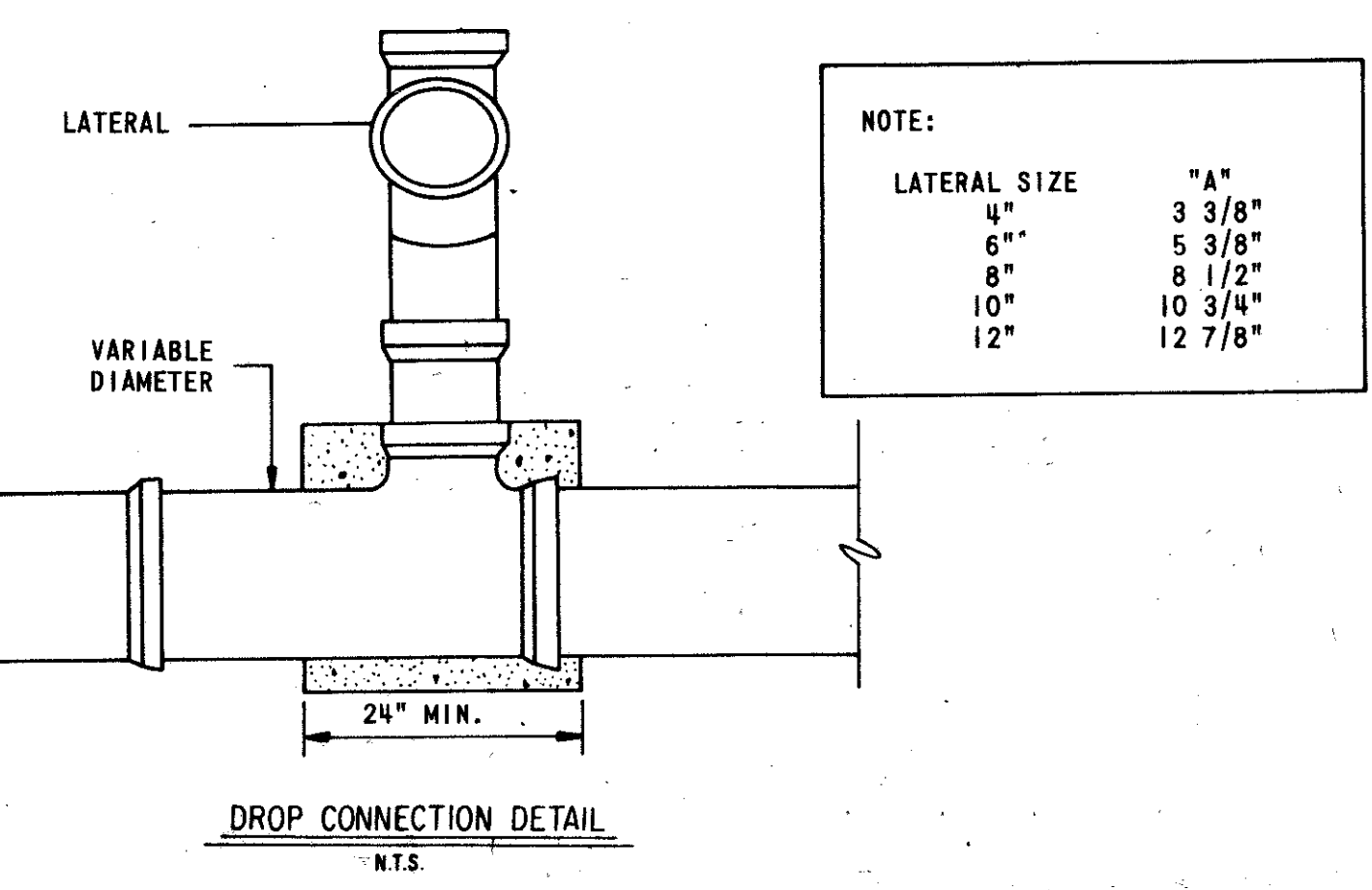
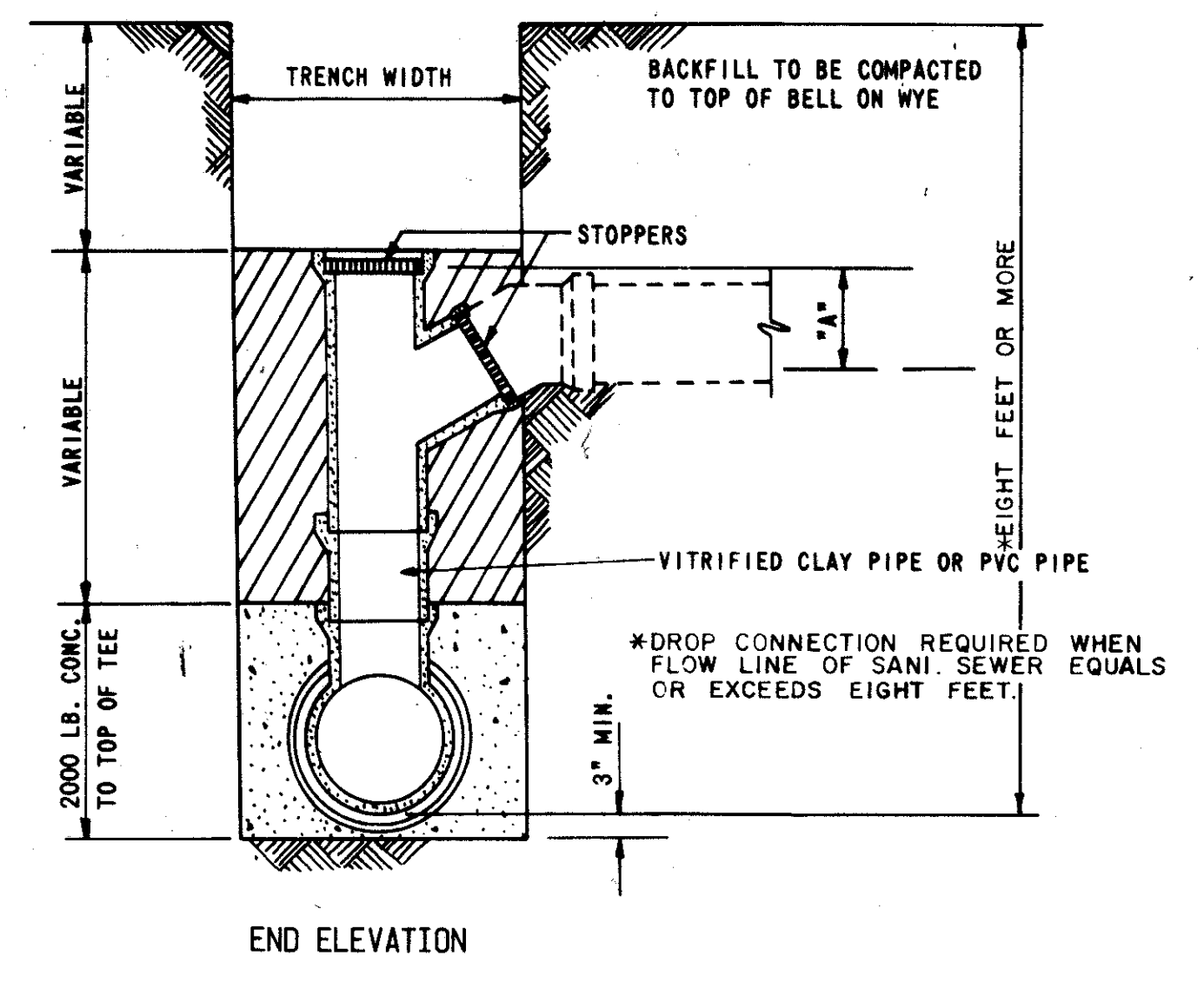
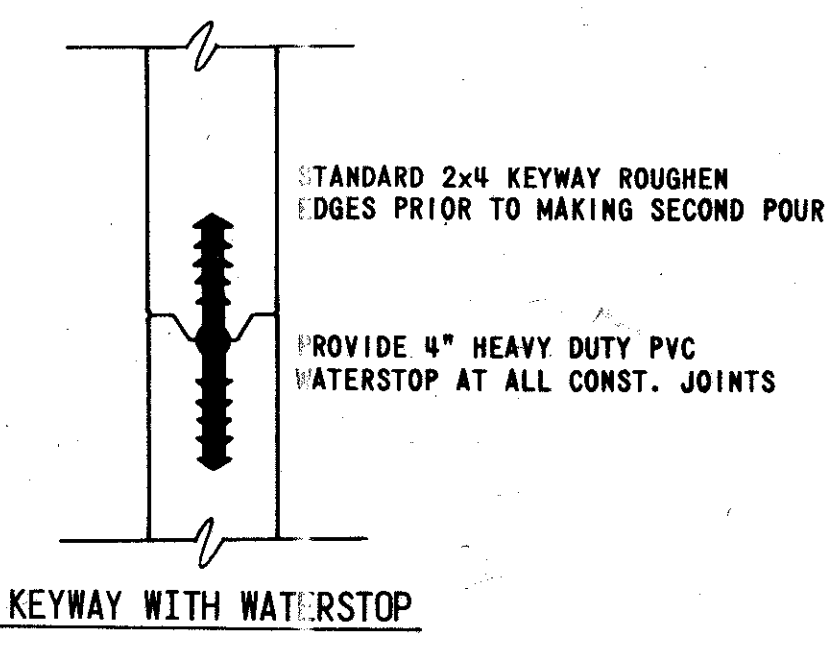
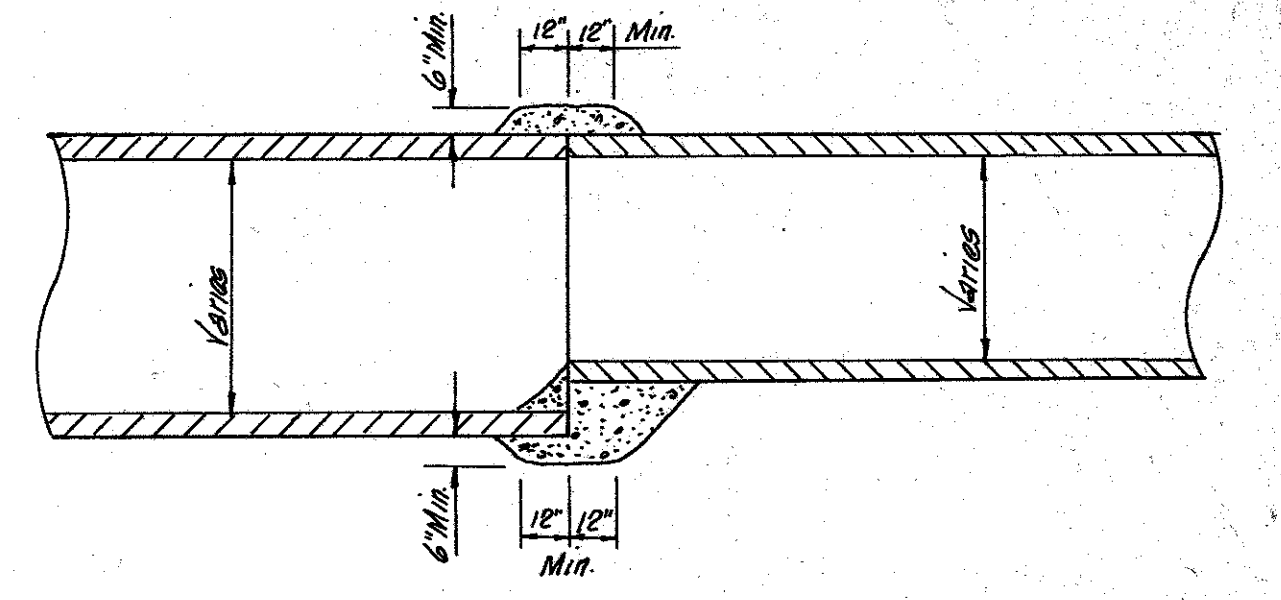
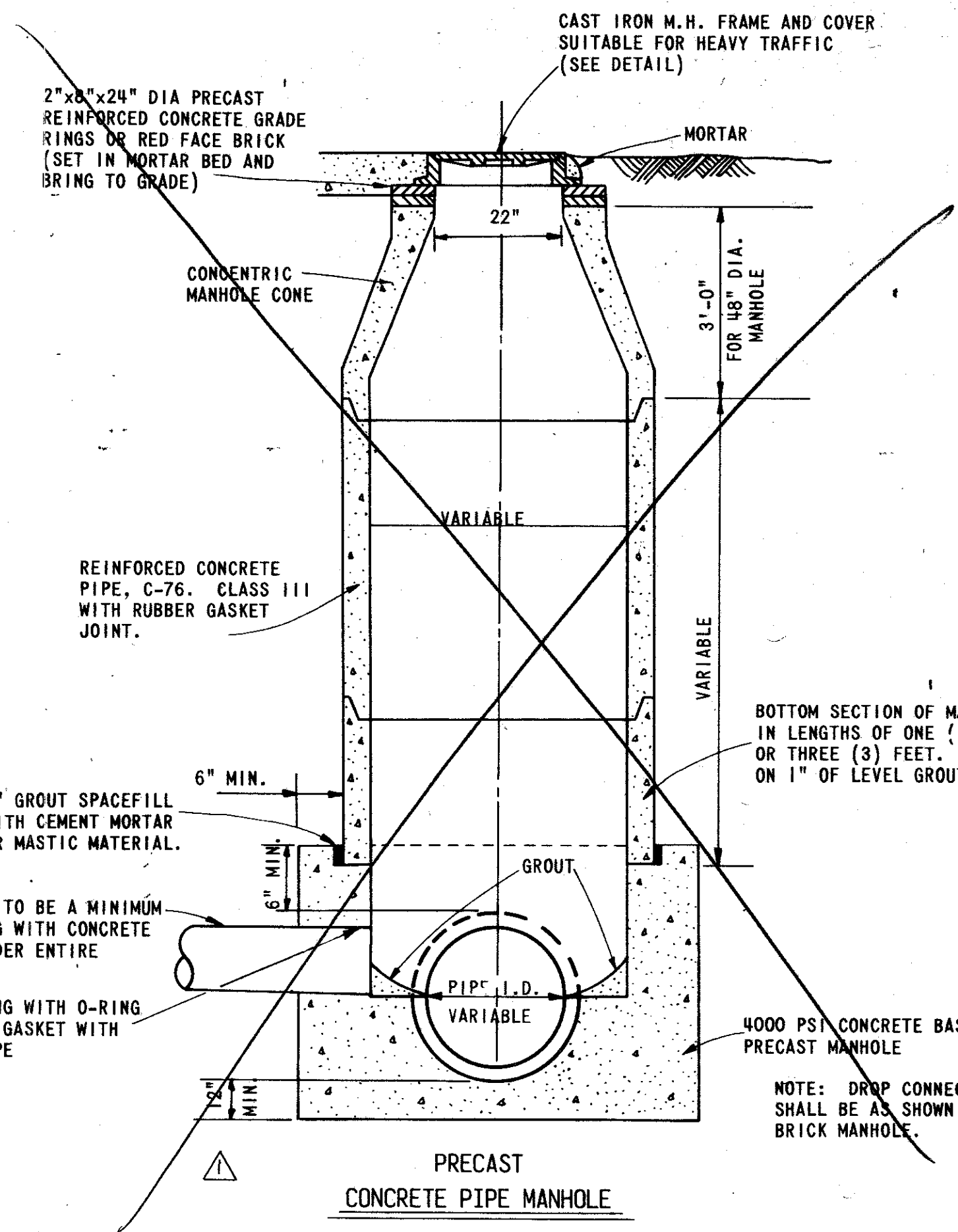
| DETAILS | | | | | |
|---------------------------------------|-------|------------|----------|-------------|----------|
| QUORUM WEST | | | | | |
| CITY OF ADDISON, TEXAS | | | | | |
| RAYMOND L. GODSON JR. INC., ENGINEERS | | | | | |
| DESIGN | DRAWN | DATE | SCALE | NOTES | FILE NO. |
| R.L.G. INC. | | March 1982 | AS NOTED | R.L.G. INC. | 82-20 |



STUBOUTS TO BE A MINIMUM OF 5' LONG WITH CONC. CRADLE UNDER ENTIRE LENGTH

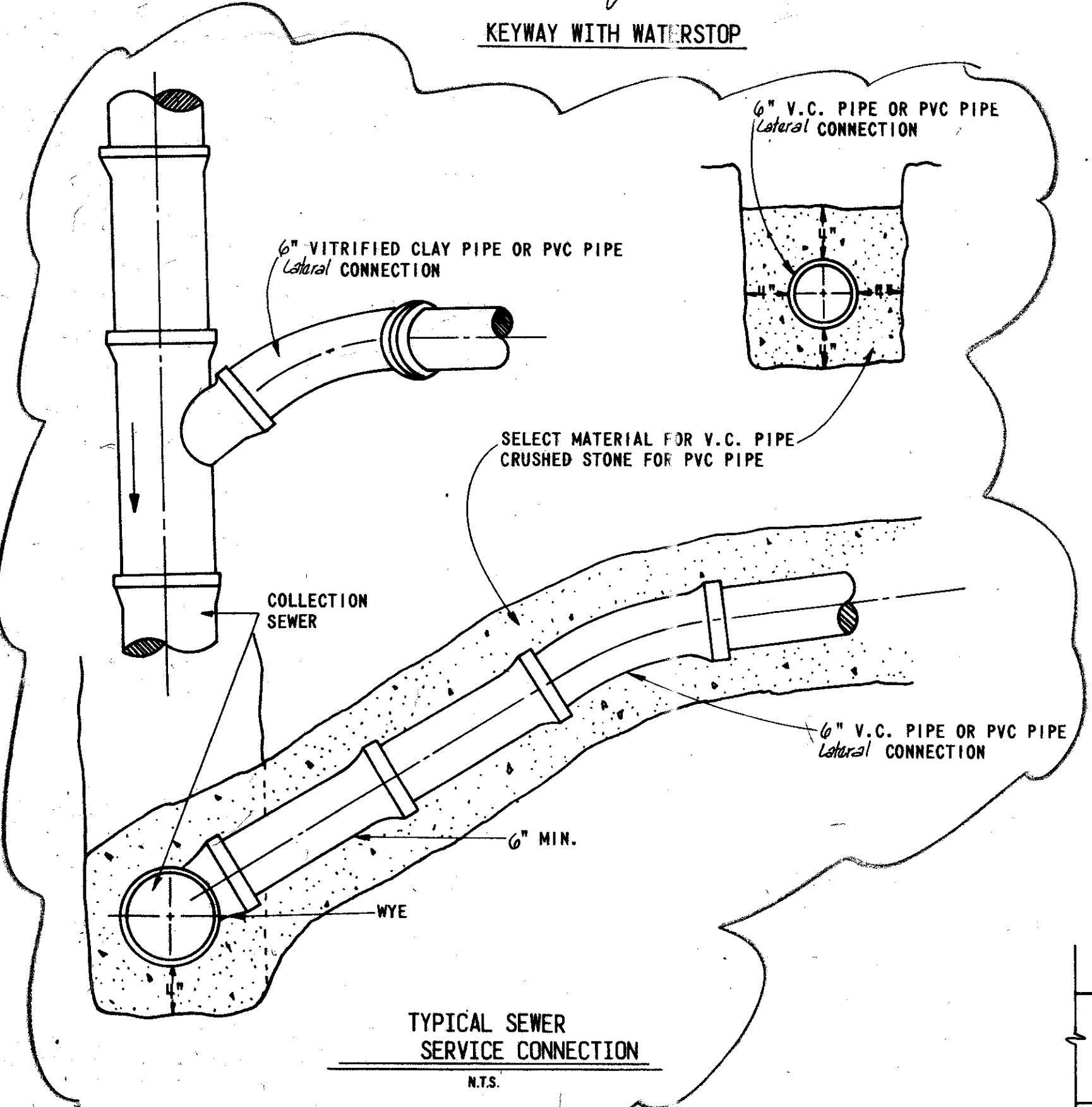
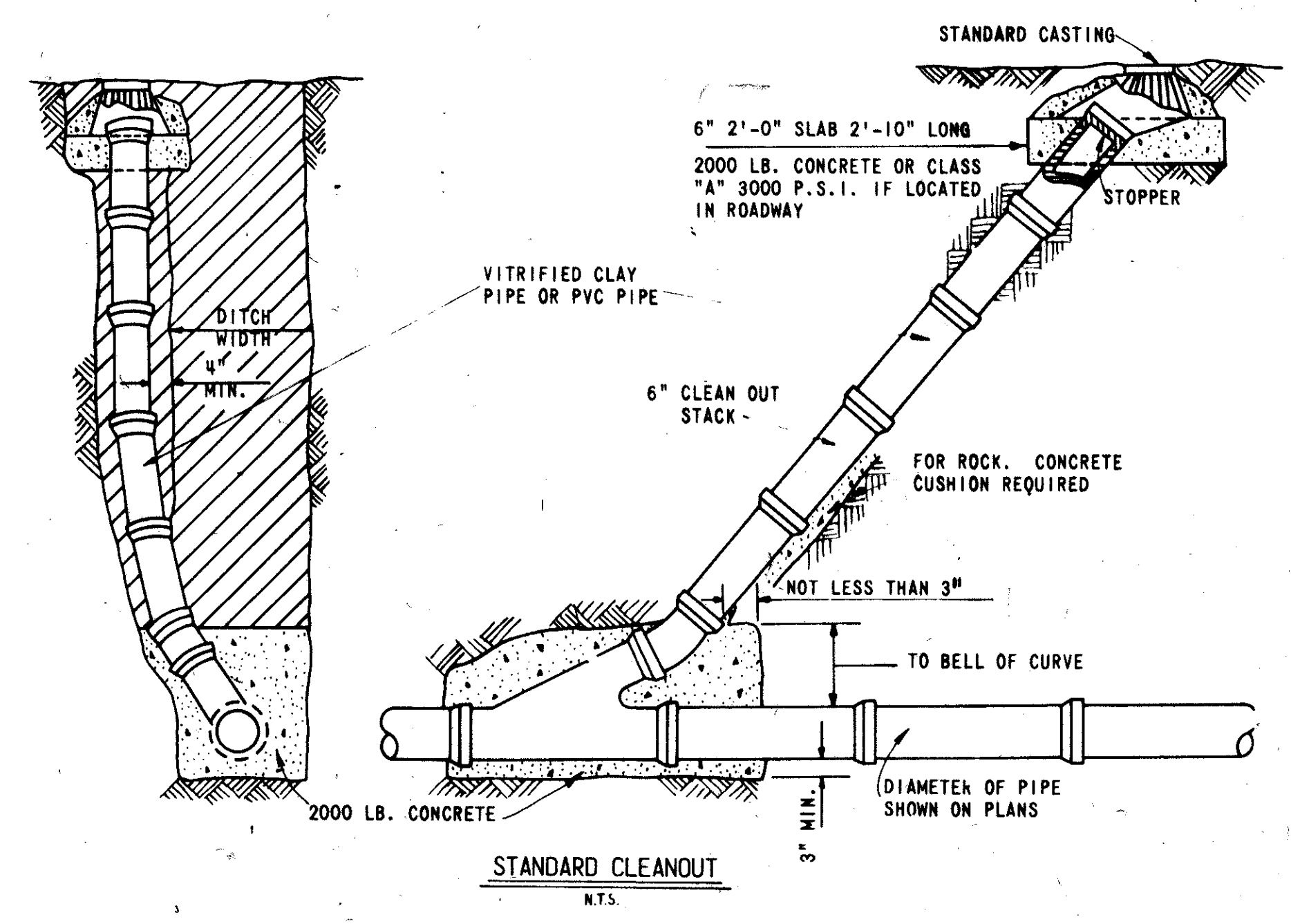


- CAST-IN-PLACE NOTES:
1. KEYWAYS REQUIRED FOR ALL CONSTRUCTION JOINTS.
 2. P.V.C. WATER STOP REQUIRED FOR ALL JOINTS IN LOWER 4'-0" OF MANHOLES.
 3. CONCRETE SHALL BE 4000 P.S.I.



NOTE:

| LATERAL SIZE | "A" |
|--------------|---------|
| 4" | 3 3/8" |
| 6" | 5 3/8" |
| 8" | 8 1/2" |
| 10" | 10 3/4" |
| 12" | 12 7/8" |

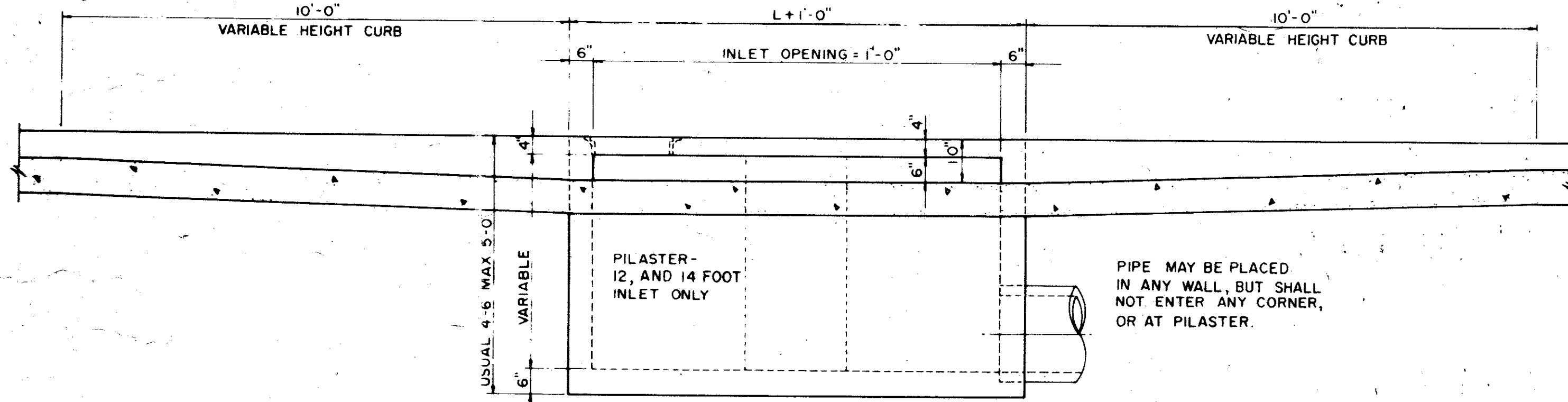
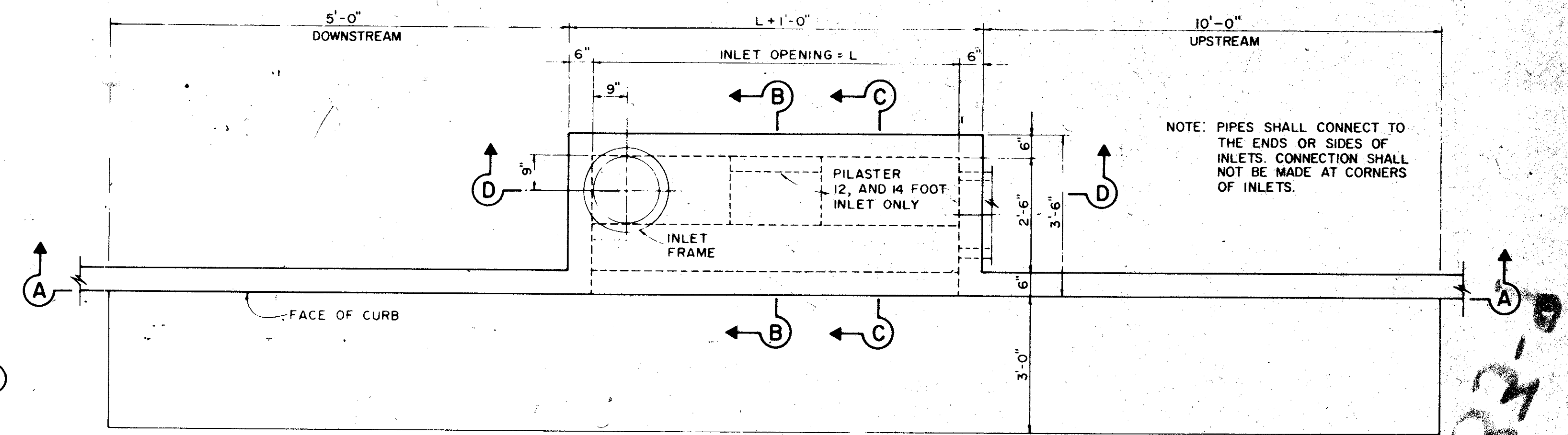
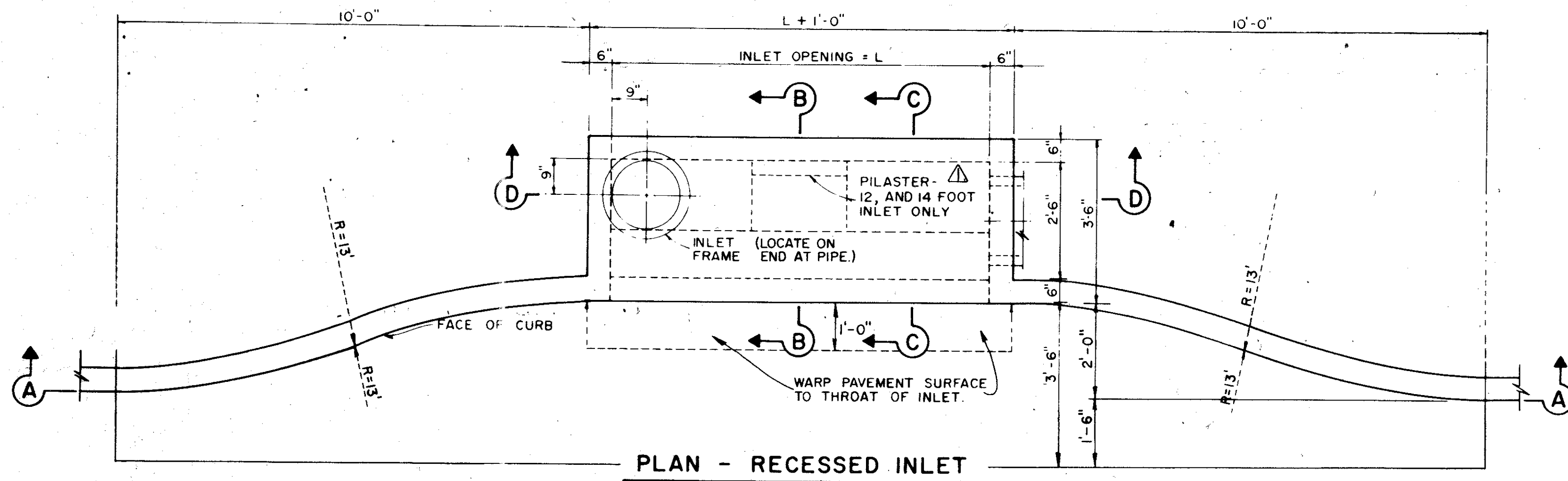


AS BUILT
DATE 8-16-82

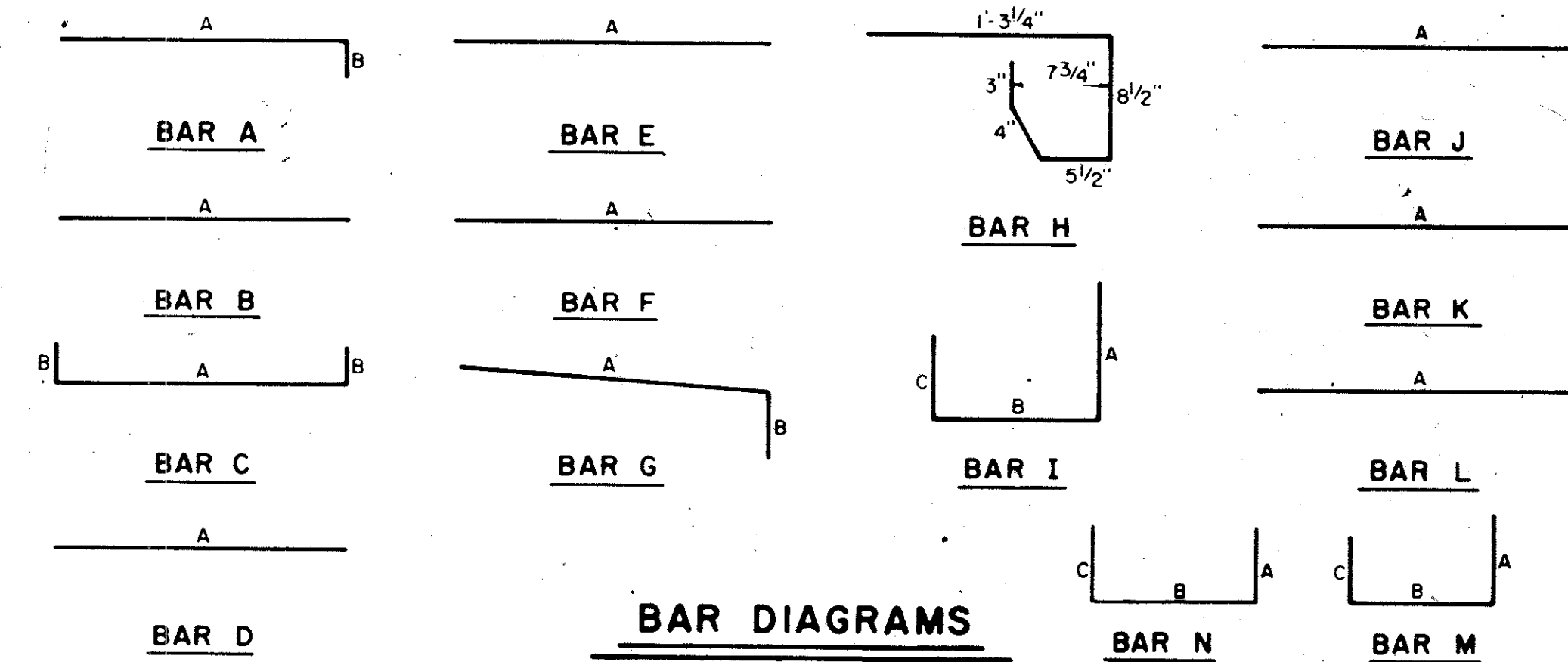
Revised 4-9-82 - Addendum No 1

4
5

| DETAILS | | | | | | |
|--|-------|------------|----------|----------|-------|-----|
| QUORUM WEST | | | | | | |
| CITY OF ADDISON, TEXAS | | | | | | |
| RAYMOND L. GOODSON JR. INC., ENGINEERS | | | | | | |
| DESIGN | DRAWN | DATE | SCALE | NOTES | FILE | NO. |
| RLG | INC. | March 1982 | AS NOTED | RLG INC. | 82-20 | |



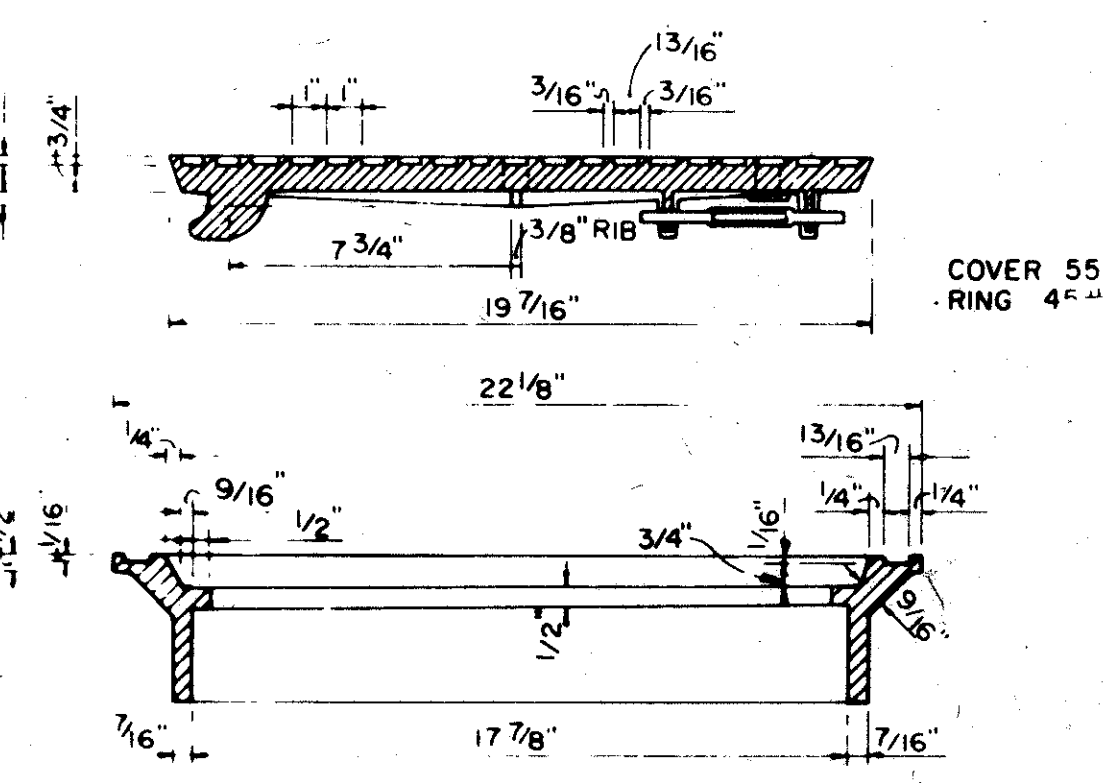
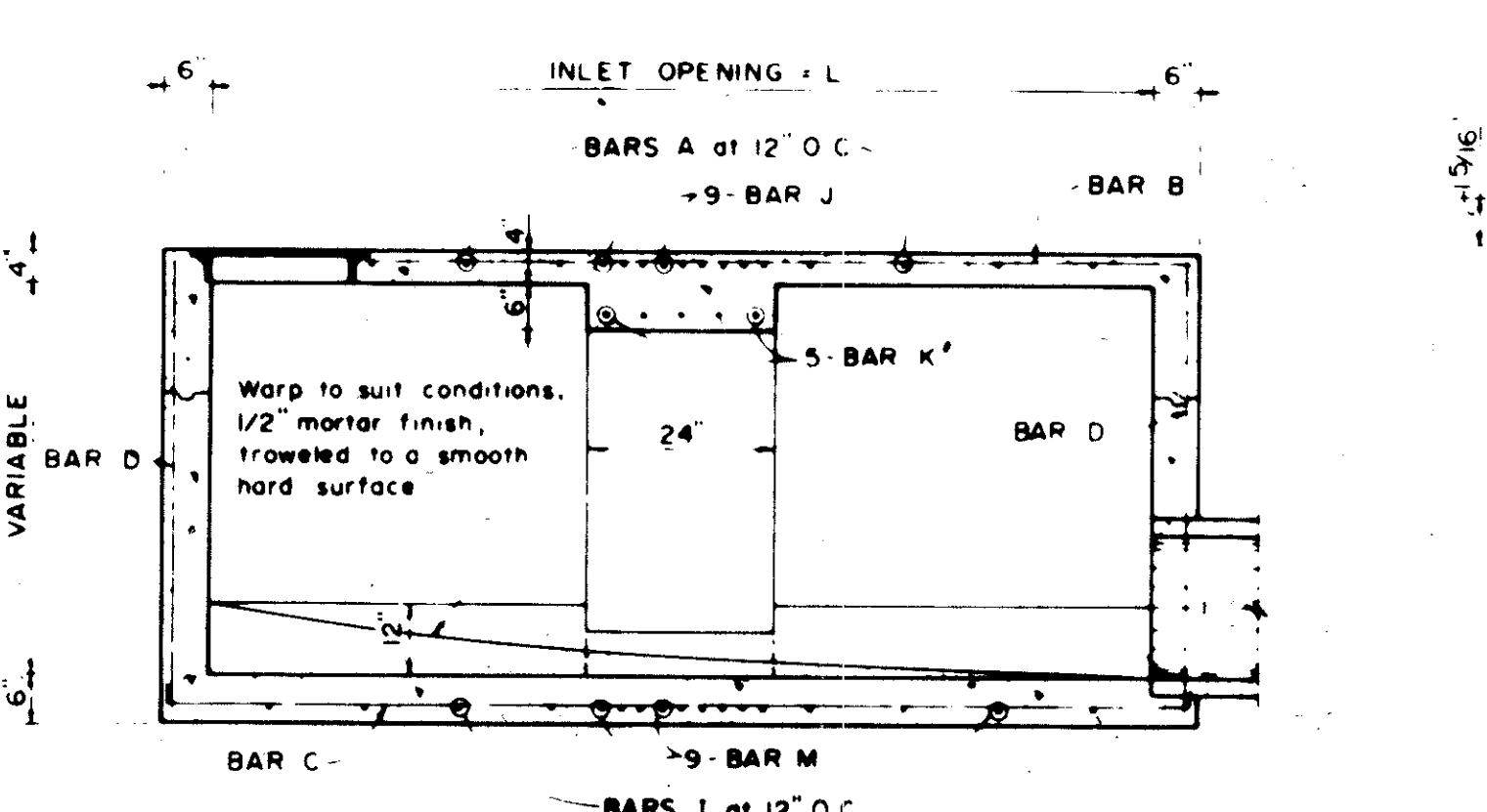
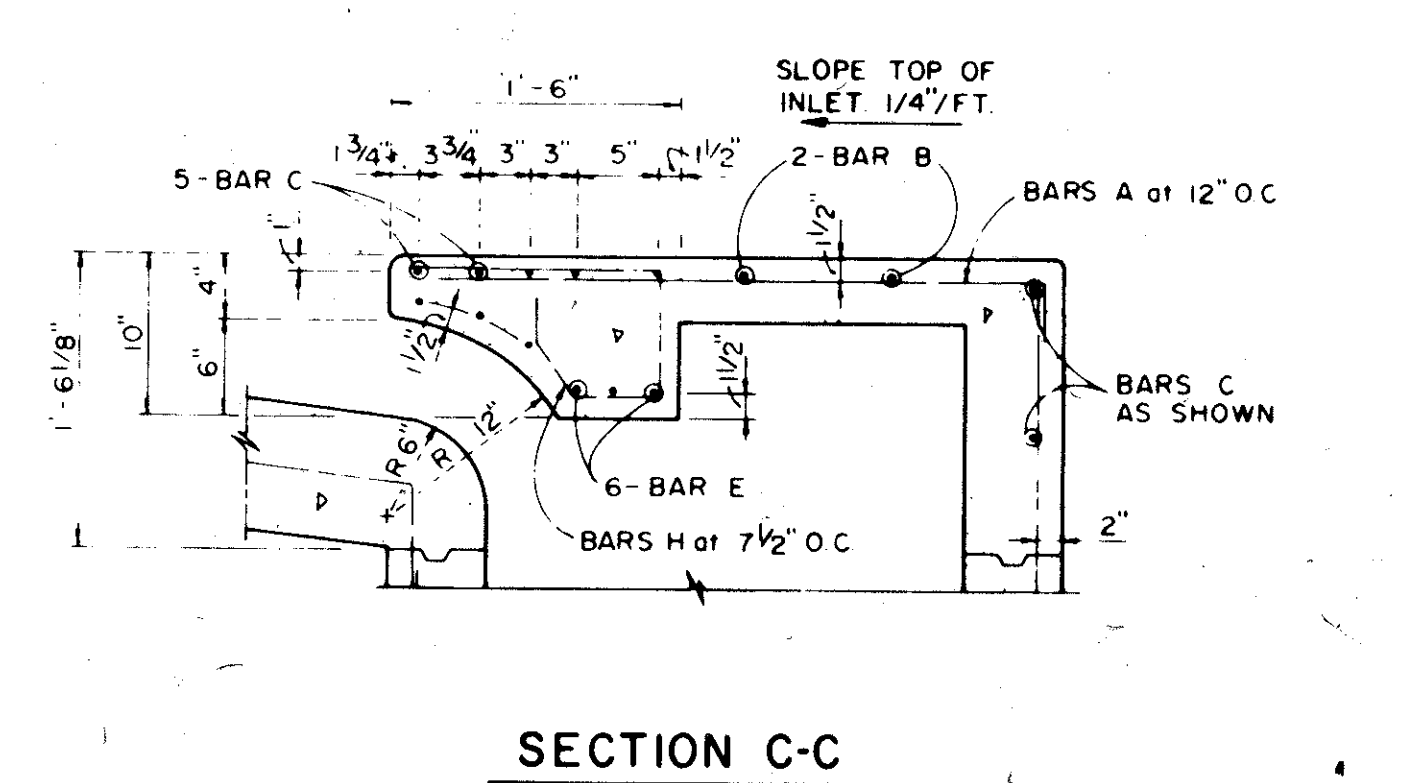
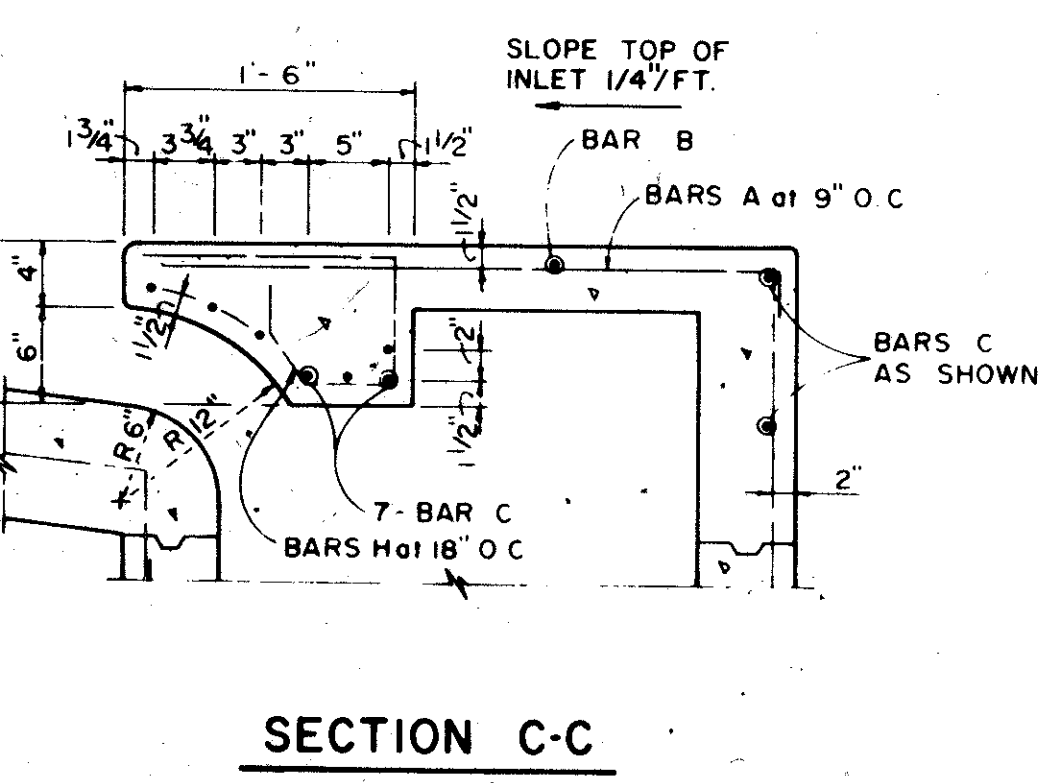
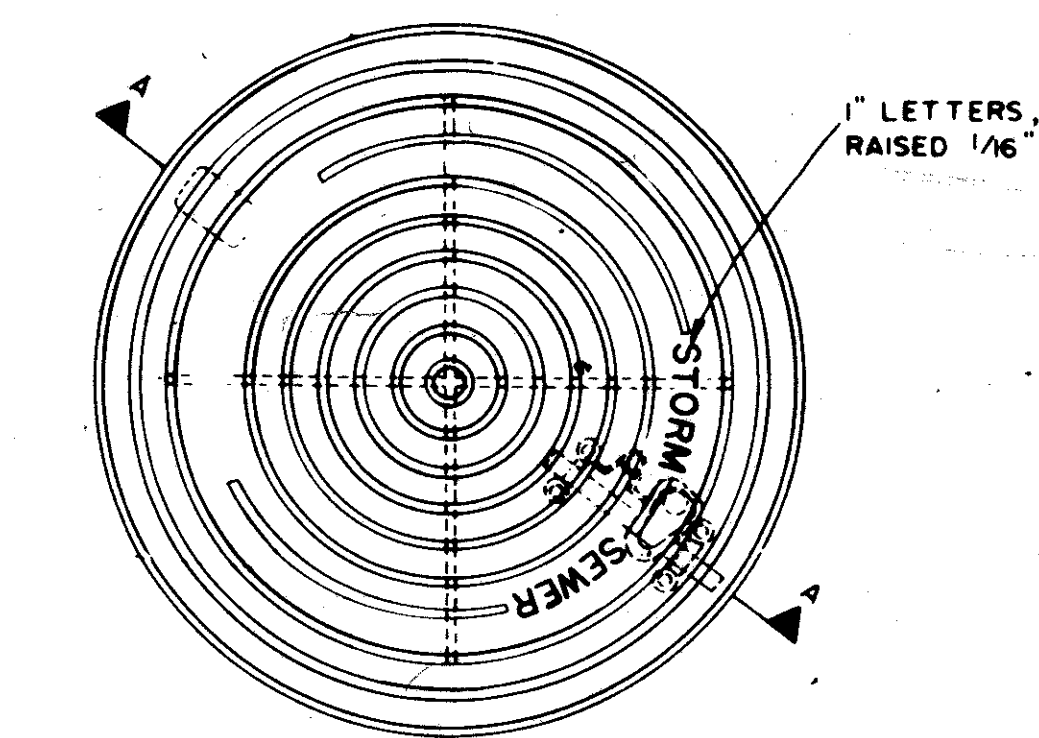
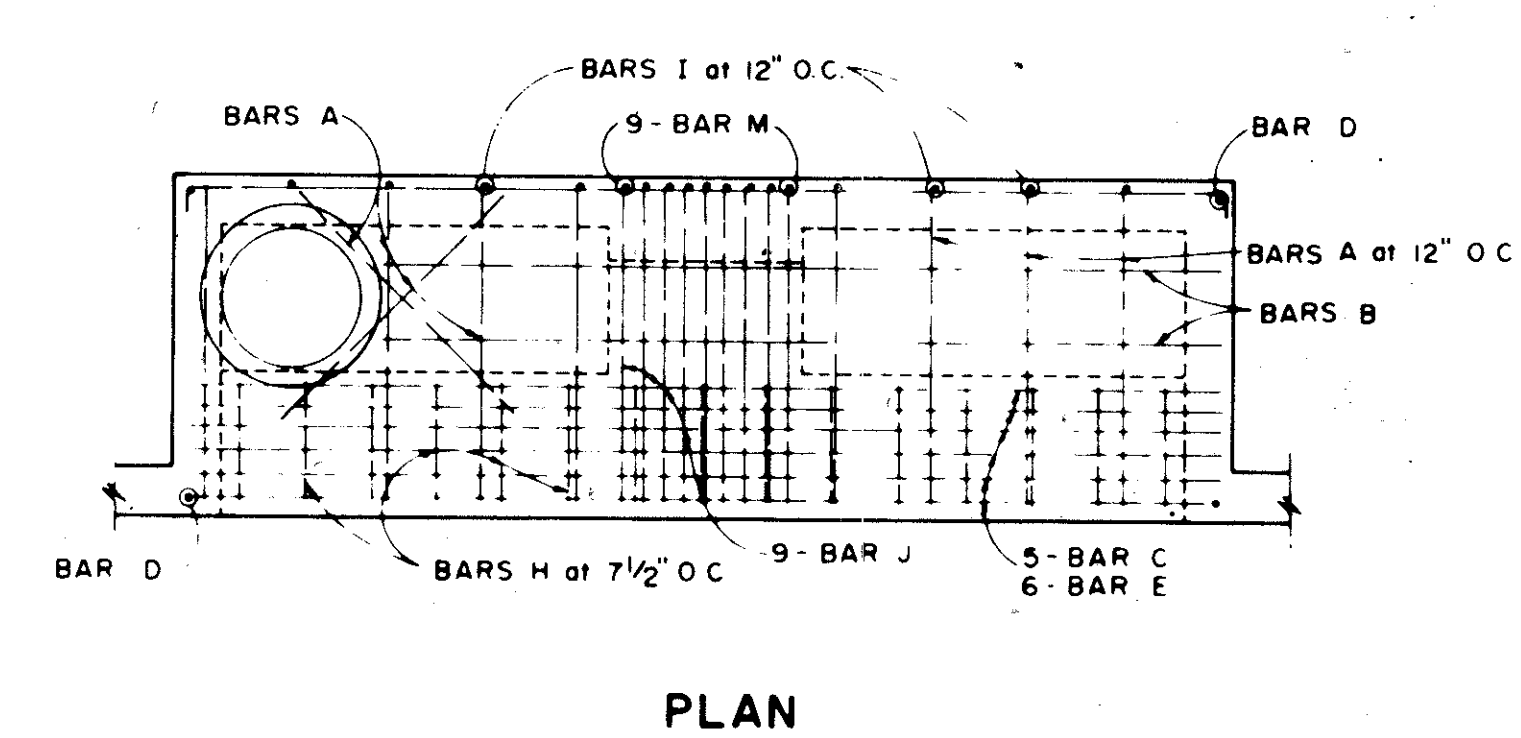
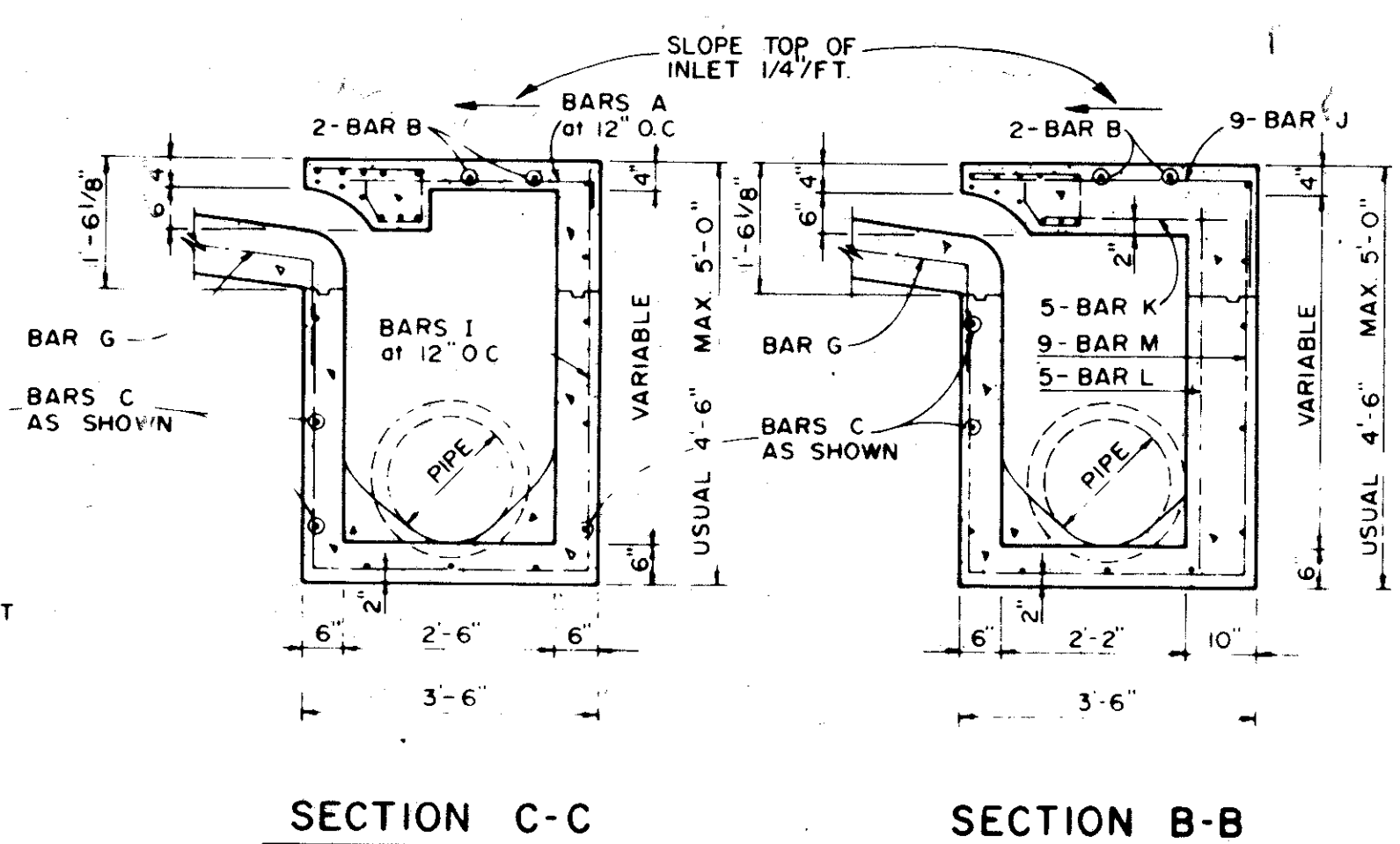
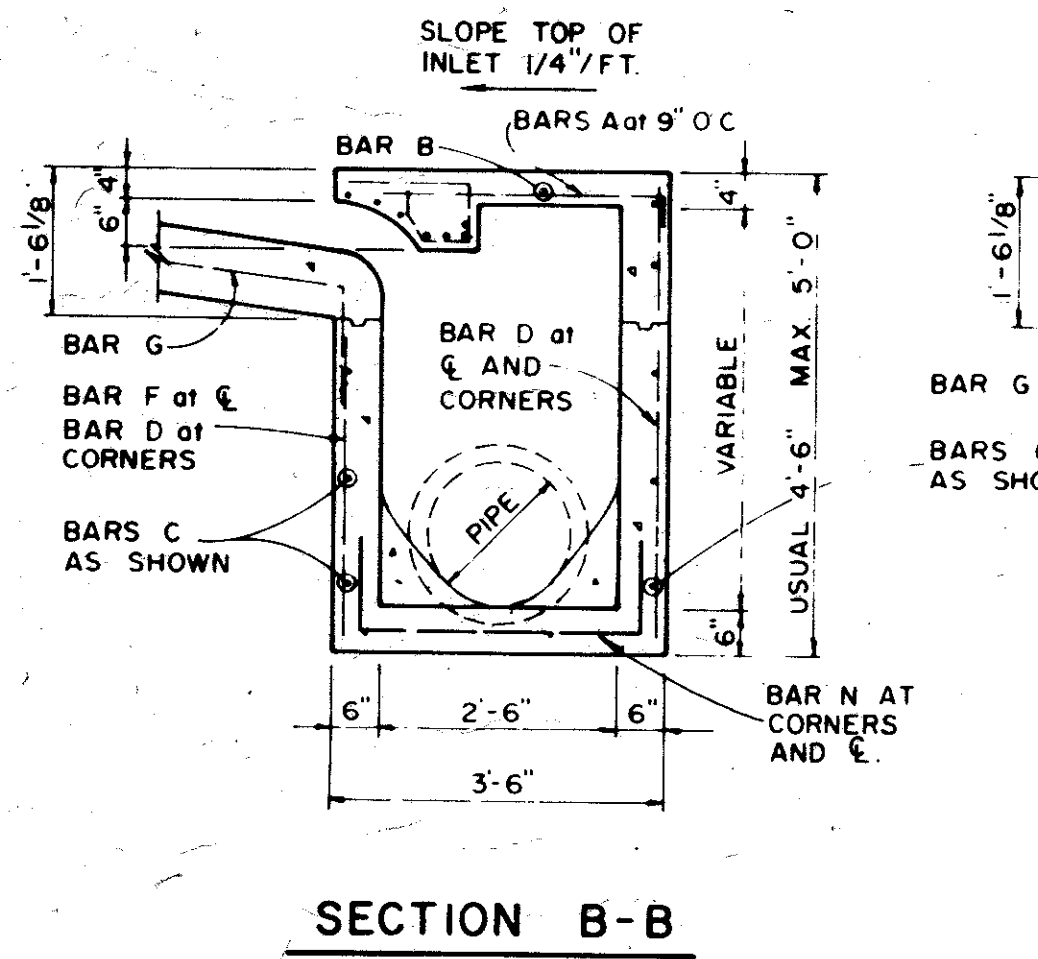
SECTION A-A - RECESSED AND STANDARD INLETS
4, 6, 8, 10, 12, AND 14 FOOT INLETS



REINFORCING STEEL SCHEDULE

DIMENSIONS SHOWN ARE FOR MAXIMUM SIZE INLETS

| INLET LENGTH | BAR TYPE | BAR DIA. (1/8 IN) | NO. REQ'D | BAR DIMENSIONS | | |
|--------------|----------|-------------------|-----------|----------------|-------|-------|
| | | | | A | B | C |
| 4 | A | 3 | 6 | 3'-2" | 0'-3" | - |
| | B | 3 | 1 | 2'-10" | - | - |
| | C | 4 | 15 | 4'-8" | 0'-6" | - |
| | D | 4 | 5 | 4'-8" | - | - |
| | F | 4 | 1 | 3'-2" | - | - |
| | G | 3 | 5 | 2'-0" | 1'-3" | - |
| | H | 3 | 3 | * | * | * |
| | N | 3 | 3 | 3'-2" | 3'-2" | 3'-2" |
| 6 | A | 3 | 9 | 3'-2" | 0'-3" | - |
| | B | 3 | 1 | 4'-10" | - | - |
| | C | 4 | 15 | 6'-8" | 0'-6" | - |
| | D | 4 | 5 | 4'-8" | - | - |
| | F | 4 | 1 | 3'-2" | - | - |
| | G | 3 | 5 | 2'-0" | 1'-3" | - |
| | H | 3 | 3 | * | * | * |
| | N | 3 | 3 | 3'-2" | 3'-2" | 3'-2" |
| 8 | A | 3 | 12 | 3'-2" | 0'-3" | - |
| | B | 3 | 1 | 6'-10" | - | - |
| | C | 4 | 15 | 8'-8" | 0'-6" | - |
| | D | 4 | 5 | 4'-8" | - | - |
| | F | 4 | 1 | 3'-2" | - | - |
| | G | 3 | 5 | 2'-0" | 1'-3" | - |
| | H | 3 | 4 | * | * | * |
| | N | 3 | 3 | 3'-2" | 3'-2" | 3'-2" |
| 10 | A | 3 | 10 | 3'-2" | 0'-3" | - |
| | B | 3 | 2 | 8'-10" | - | - |
| | C | 4 | 16 | 10'-8" | 0'-6" | - |
| | D | 4 | 4 | 4'-8" | - | - |
| | E | 5 | 6 | 10'-8" | - | - |
| | G | 3 | 5 | 2'-0" | 1'-3" | - |
| | H | 3 | 15 | * | * | * |
| | I | 4 | 8 | 4'-8" | 3'-2" | 3'-2" |
| | L | 4 | 5 | 4'-3" | - | - |
| 12 | A | 3 | 12 | 3'-2" | 0'-3" | - |
| | B | 3 | 2 | 10'-10" | - | - |
| | C | 4 | 16 | 12'-8" | 0'-6" | - |
| | D | 4 | 4 | 4'-8" | - | - |
| | E | 5 | 6 | 12'-8" | - | - |
| | G | 3 | 5 | 2'-0" | 1'-3" | - |
| | H | 3 | 18 | * | * | * |
| | I | 4 | 10 | 4'-8" | 3'-2" | 3'-2" |
| | J | 5 | 9 | 3'-2" | 1'-3" | - |
| | K | 4 | 5 | 2'-3" | - | - |
| | L | 4 | 5 | 4'-3" | - | - |
| | M | 5 | 9 | 4'-3" | 3'-2" | 3'-9" |
| 14 | A | 3 | 14 | 3'-2" | 0'-3" | - |
| | B | 3 | 2 | 10'-10" | - | - |
| | C | 4 | 16 | 14'-8" | 0'-6" | - |
| | D | 4 | 4 | 4'-8" | - | - |
| | E | 5 | 6 | 14'-8" | - | - |
| | G | 3 | 5 | 2'-0" | 1'-3" | - |
| | H | 3 | 21 | * | * | * |
| | I | 4 | 12 | 4'-8" | 3'-2" | 3'-2" |
| | J | 5 | 9 | 3'-2" | 1'-3" | - |
| | K | 4 | 5 | 2'-3" | - | - |
| | L | 4 | 5 | 4'-3" | - | - |
| | M | 5 | 9 | 4'-3" | 3'-2" | 3'-9" |



AS BUILT
DATE 8-16-82

DETAILS

QUORUM WEST
CITY OF ADDISON, TEXAS
RAYMOND L. GOODSON JR. INC., ENGINEERS

| DESIGN | DRAWN | DATE | SCALE | NOTES | FILE NO. |
|-------------|-------|------------|----------|-------------|----------|
| R.L.G. INC. | | March 1982 | AS NOTED | R.L.G. INC. | 82-20 |