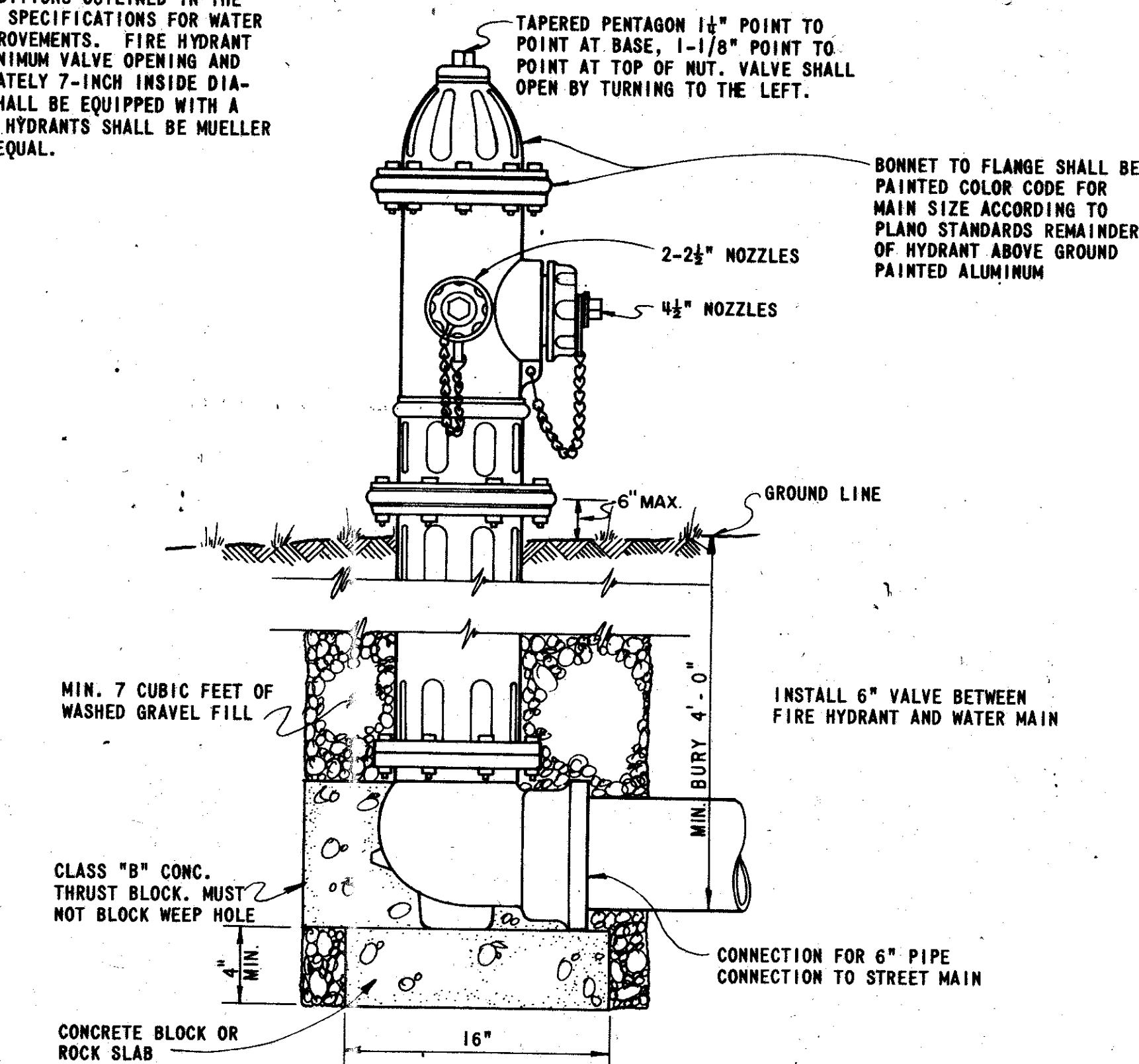
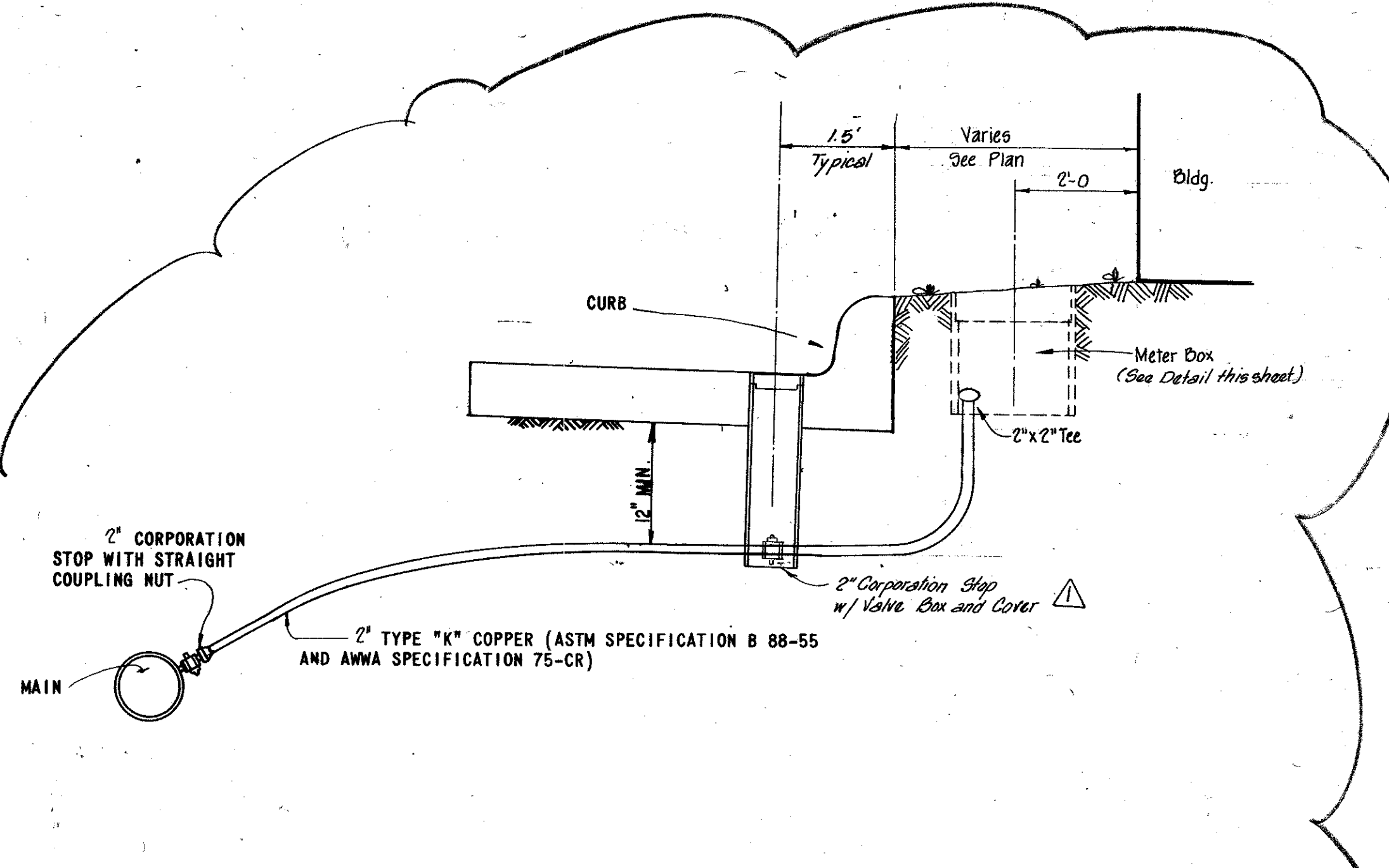


NOTE:

IN GENERAL, ALL FIRE HYDRANTS SHALL CONFORM TO ANMA STANDARD SPECIFICATIONS FOR FIRE HYDRANTS FOR ORDINARY WATER WORKS SERVICE, C-502-73, EXCEPT FOR CHANGES OR ADDITIONS OUTLINED IN THE CITY OF ADDISON STANDARD SPECIFICATIONS FOR WATER AND SANITARY SEWER IMPROVEMENTS. FIRE HYDRANT SHALL HAVE A 5-INCH MINIMUM VALVE OPENING AND WITH A BARREL APPROXIMATELY 7-INCH INSIDE DIAMETER. ALL HYDRANTS SHALL BE EQUIPPED WITH A BREAKAWAY FLANGE. ALL HYDRANTS SHALL BE MUELLER CENTURION OR APPROVED EQUAL.

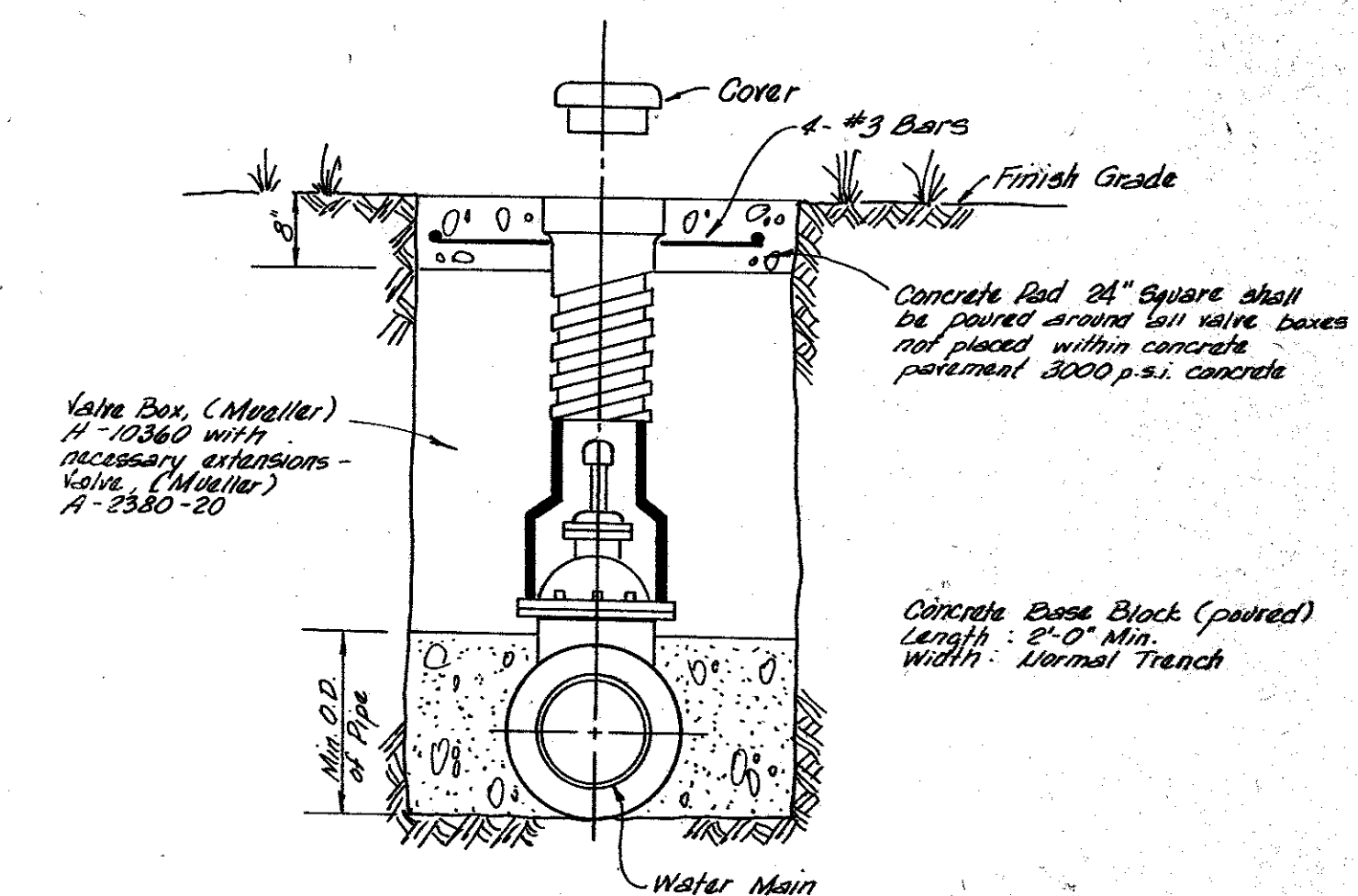


TYPICAL FIRE HYDRANT INSTALLATION



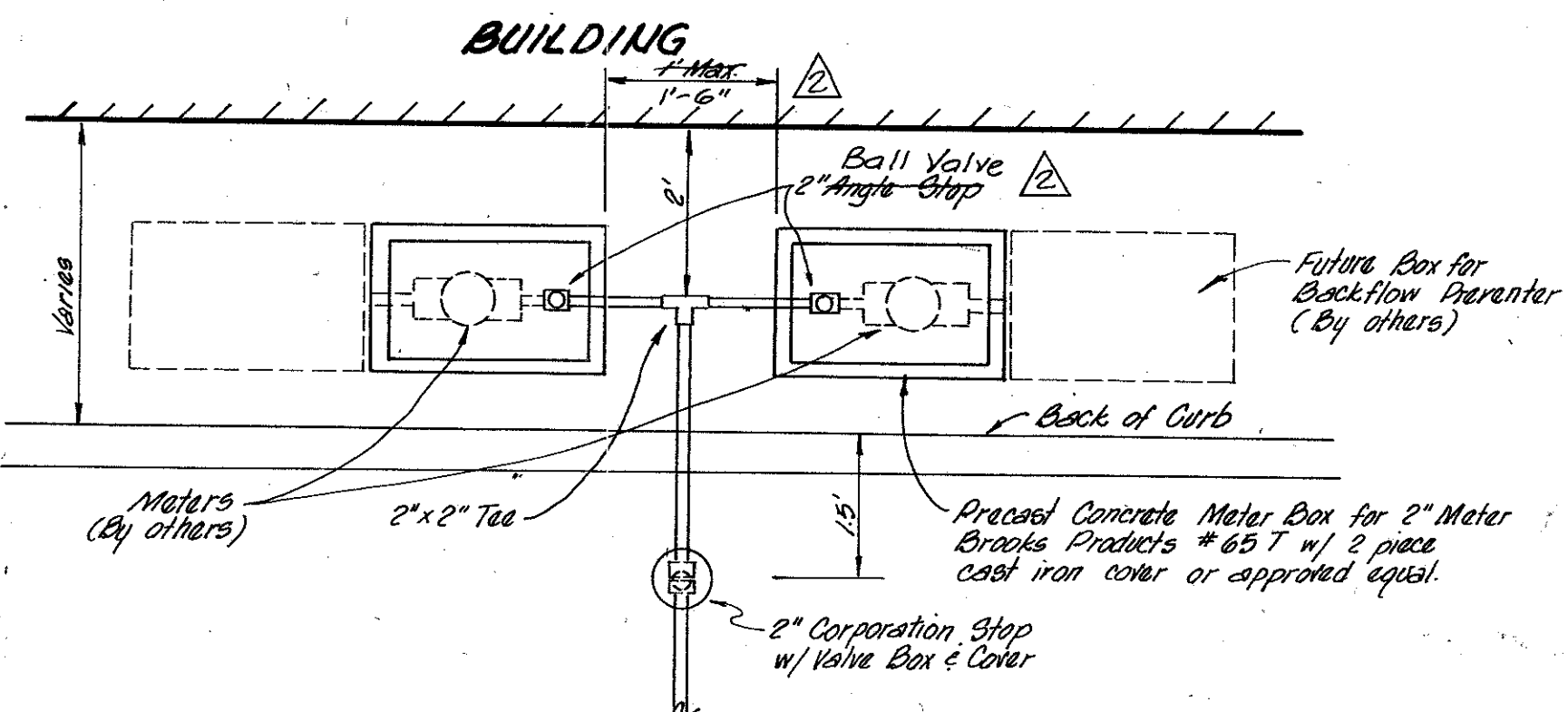
TYPICAL SERVICE CONNECTION WITH METER BOX

MUELLER TYPE K COPPER SERVICE PIPE SOFT ANNEALED	DOUBLE STRAP BRONZE SERVICE SADDLE WITH IRON PIPE THREADS	MUELLER CORPORATION STOP	MUELLER ANGLE STOP	BASS & HAYS SLOTTED METER BOX
1 INCH	1 1/2 INCH	H-15000	H-14255	34AS
1 1/2 INCH	2 INCH	H-15025	H-14276	55 A
2 INCH		H-15025	H-14276	55 A



Note: Gate Valves shall conform to A.W.W.A. specifications 0-500-71, and shall be as manufactured by Mueller Company.

TYPICAL VALVE SETTING AND BOX



PLAN OF TYPICAL WATER SERVICE

GENERAL NOTES:

ALL CALCULATIONS ARE BASED ON TOTAL INTERNAL PRESSURE OF 150 PSI.

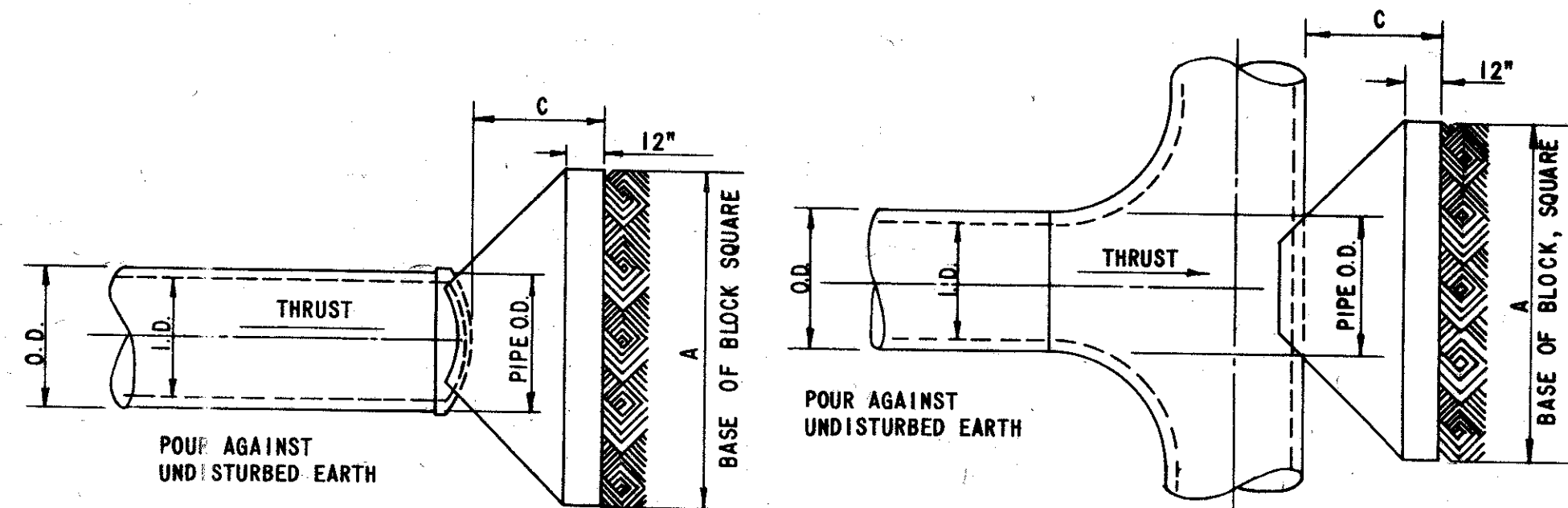
ALLOWABLE SOIL BEARING PRESSURES MUST BE AT LEAST ONE TON PER SQUARE FOOT FOR THE THRUST BLOCKS SHOWN. IN SOILS OF LESSER CAPACITY, INCREASE SIZE AND BEARING AREA PROPORTIONATELY. VOLUMES OF VERTICAL BEND THRUST BLOCKS ARE NET VOLUMES OF CONCRETE TO BE FURNISHED, AND THE CORRESPONDING WEIGHT OF THE CONCRETE (AT 4,000#/C.Y.) EQUALS THE VERTICAL COMPONENT OF THRUST ON THE VERTICAL BEND. ALL BEARING SURFACES OF THRUST BLOCKS SHALL BE POURED AGAINST UNDISTURBED EARTH.

CONCRETE FOR BLOCKING SHALL BE 2,000# CONCRETE.

DIMENSIONS MAY BE VARIED AS REQUIRED BY FIELD CONDITIONS WHERE AND AS DIRECTED BY THE ENGINEER, BUT SHALL NOT BE LESS THAN THE DIMENSIONS SHOWN HERE.

I.D. IN INCHES	11.25°	15°	22.50°	30°	45°	60°	75°	90°
12								
14								
16	2.94	3.90	5.78	7.54	10.66	13.06	14.56	15.08
18	3.72	4.94	7.30	9.54	13.50	16.52	18.42	19.08
20	4.60	6.10	9.02	11.78	16.66	20.40	22.76	23.56
24	6.62	8.78	12.98	16.96	23.98	29.38	32.76	33.92
30	10.34	13.72	20.28	26.52	37.50	45.92	51.22	53.02

I.D.	A	C	THRUST
UK+T	FT.	FT.	TONS
12"			
14"			
16"	3.87	1.57	15.08
18"	4.37	1.77	19.09
20"	4.86	1.97	23.56
24"	5.82	2.36	33.93
30"	7.28	2.95	53.01



PLAN OF PLUG THRUST BLOCK

PLAN OF TEE THRUST BLOCK

TYPICAL PLUG & TEE THRUST BLOCKS

AS BUILT
DATE 8-16-82

Revised 8-16-82 - As-Built
Revised 4-9-82 - Addendum No. 1

3/5

DETAILS					
QUORUM WEST					
CITY OF ADDISON, TEXAS					
RAYMOND L. GODSON JR. INC., ENGINEERS					
DESIGN	DRAWN	DATE	SCALE	NOTES	FILE NO.
R.L.G. INC.		March 1982	AS NOTED	R.L.G. INC.	82-20