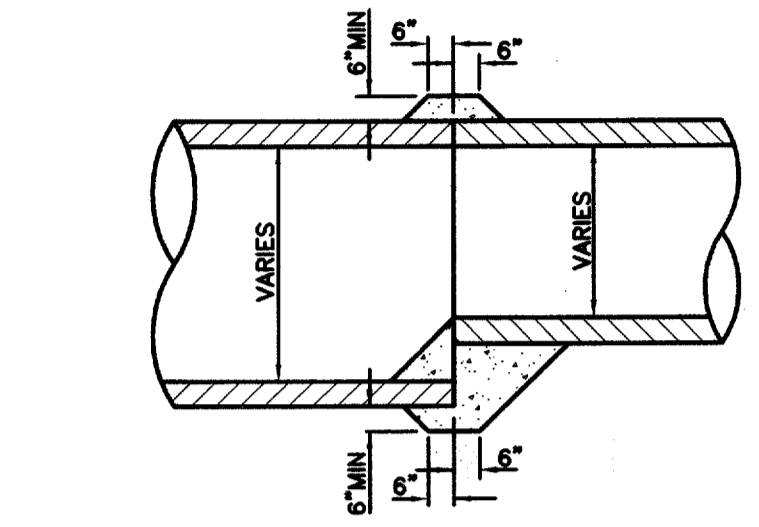
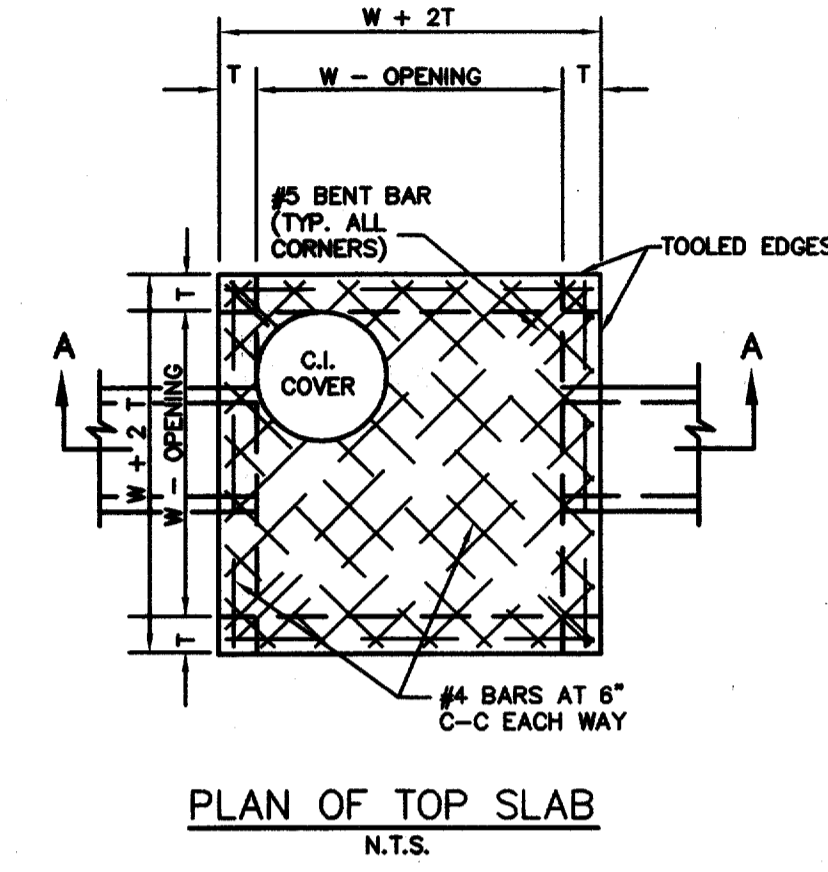
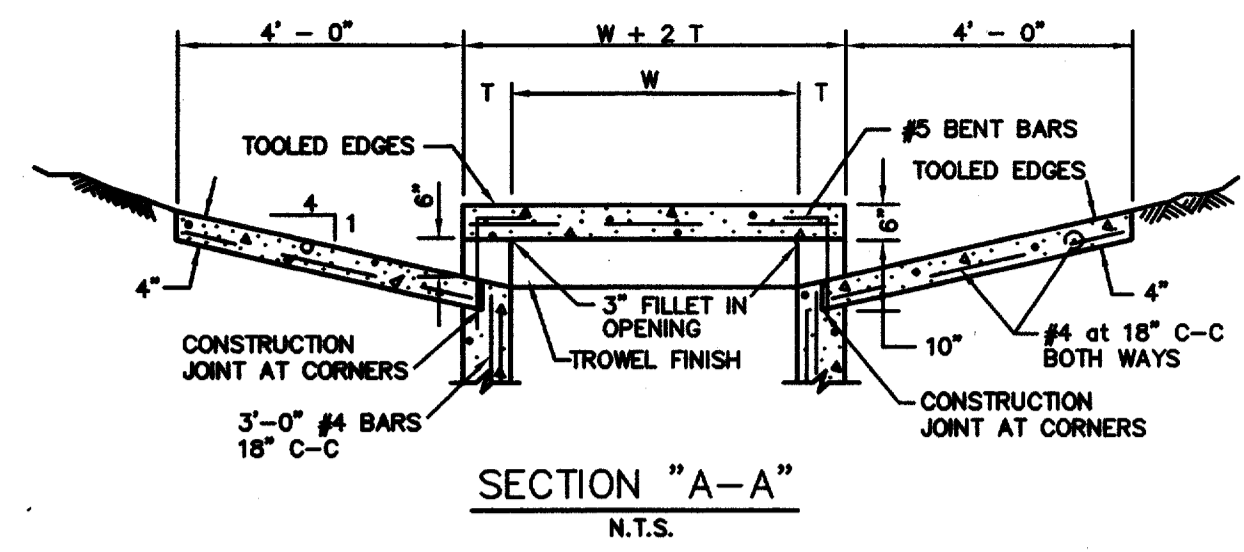
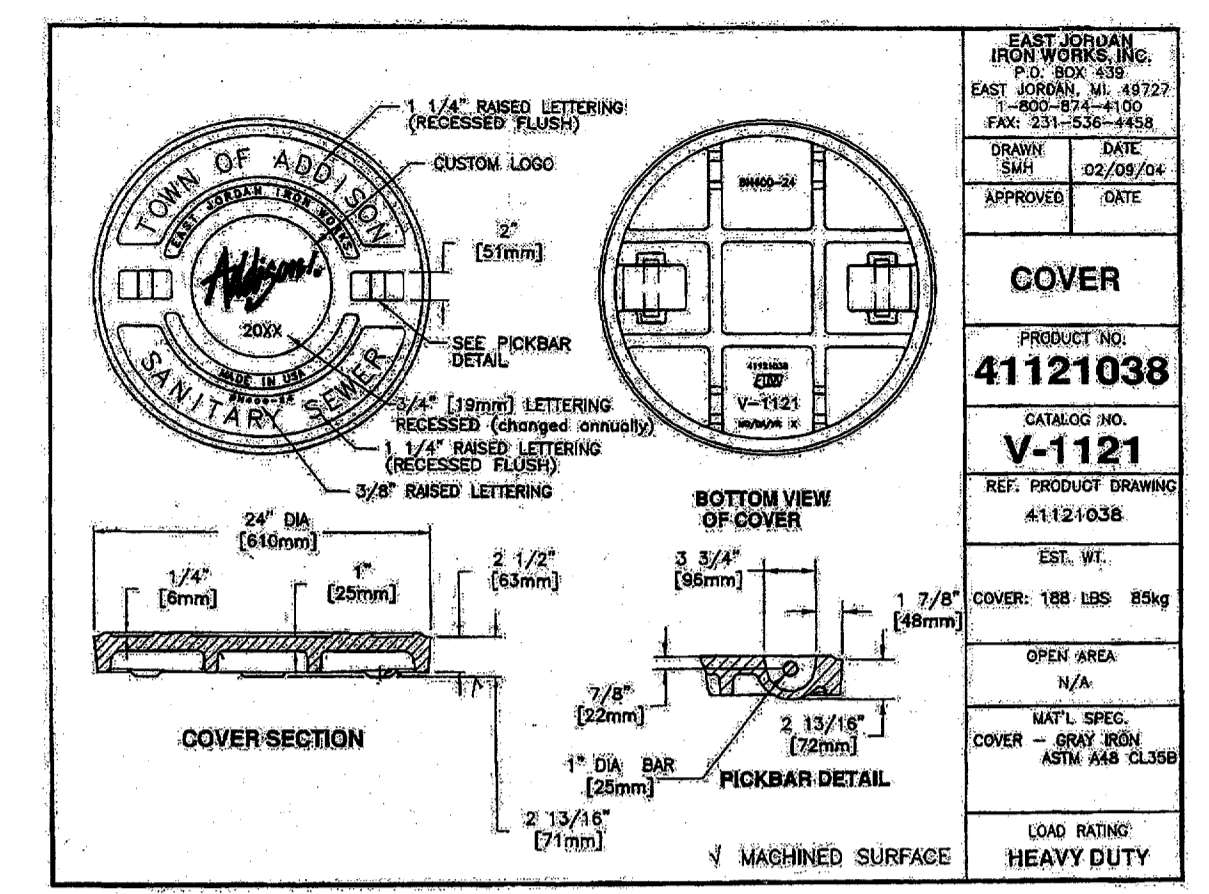


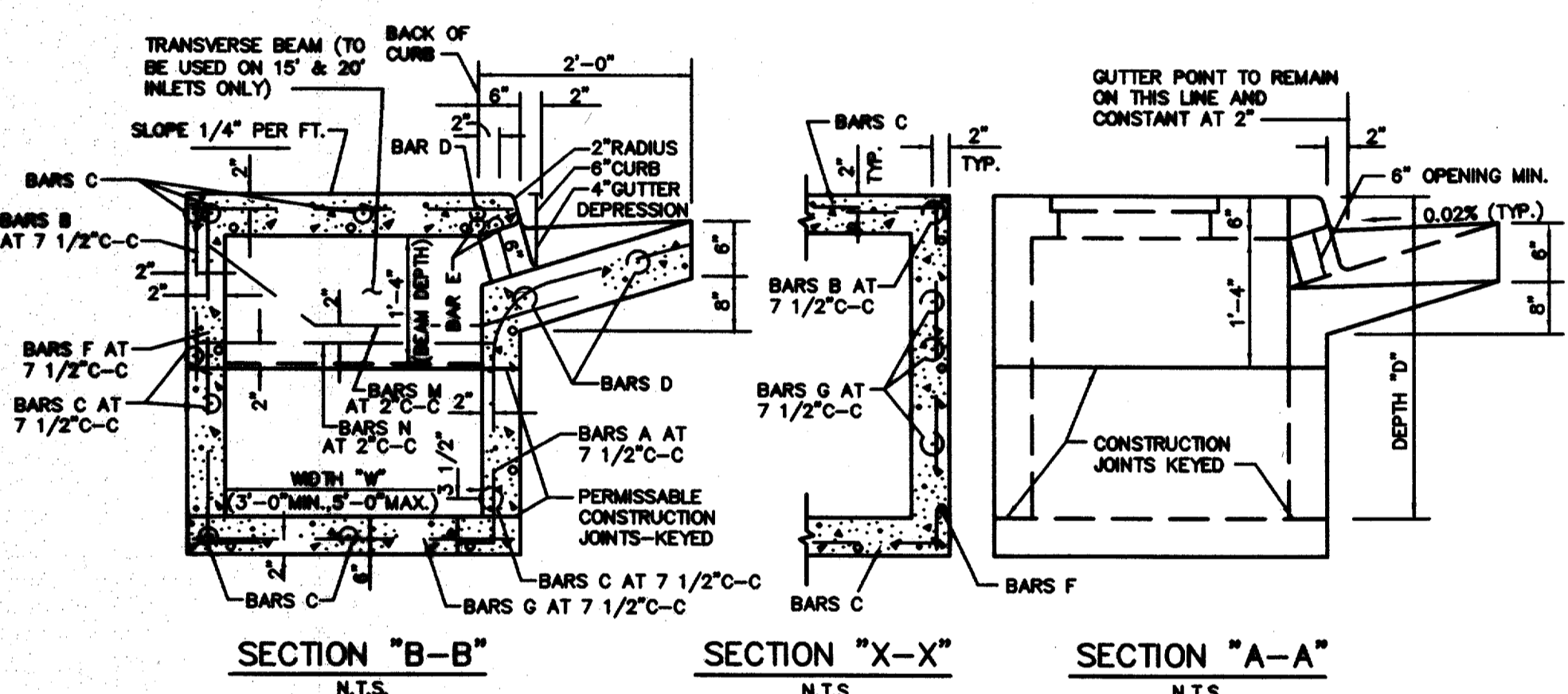
INLET SIZE	T	W
2' SQUARE	7"	2'-0"
4' SQUARE	7"	4'-0"
6' SQUARE	8"	6'-0"
8' SQUARE	9"	8'-0"



DETAIL OF CONCRETE COLLAR
FOR END TO END EXTENSIONS



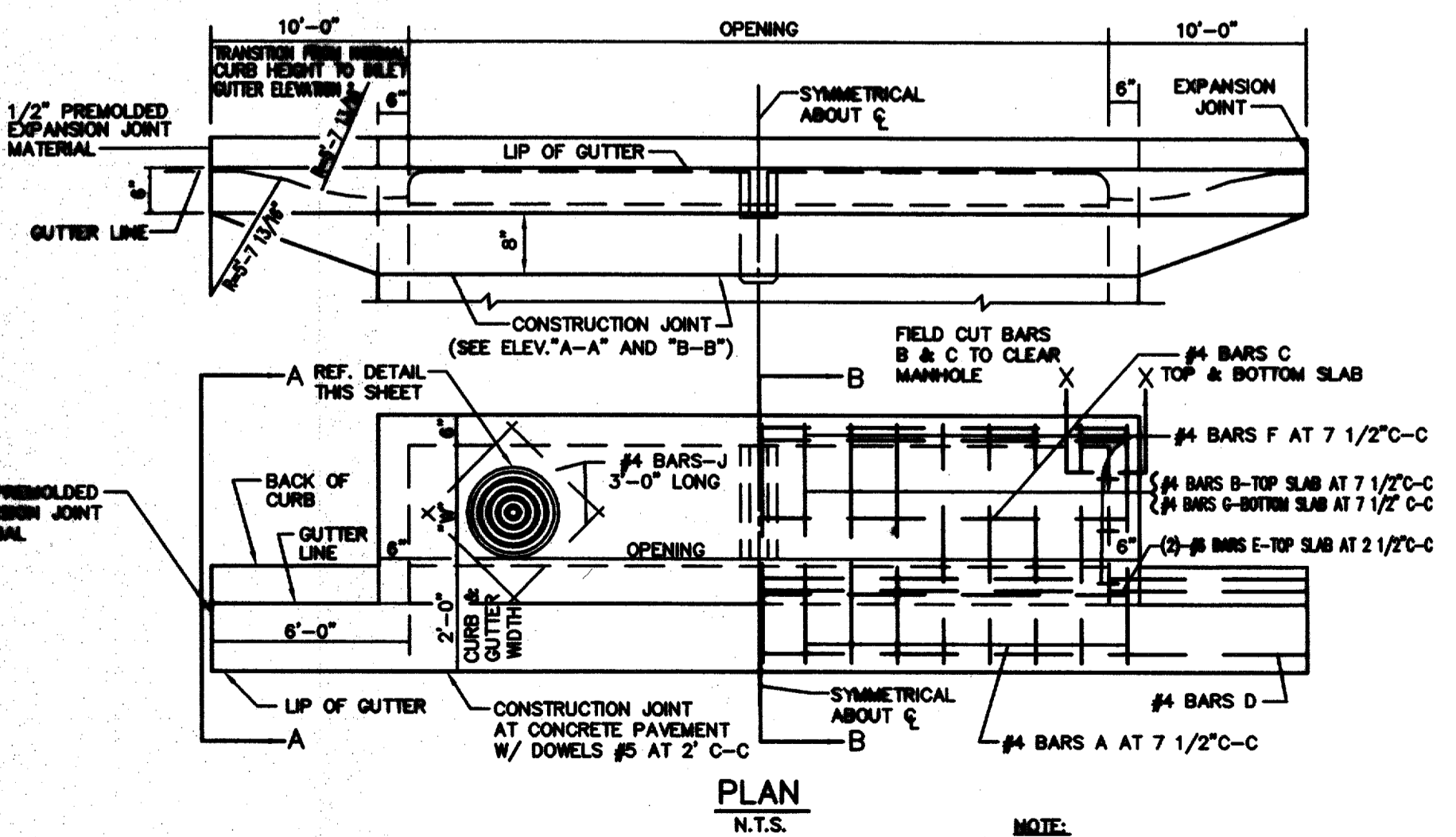
SANITARY SEWER COVER DETAIL
N.T.S.



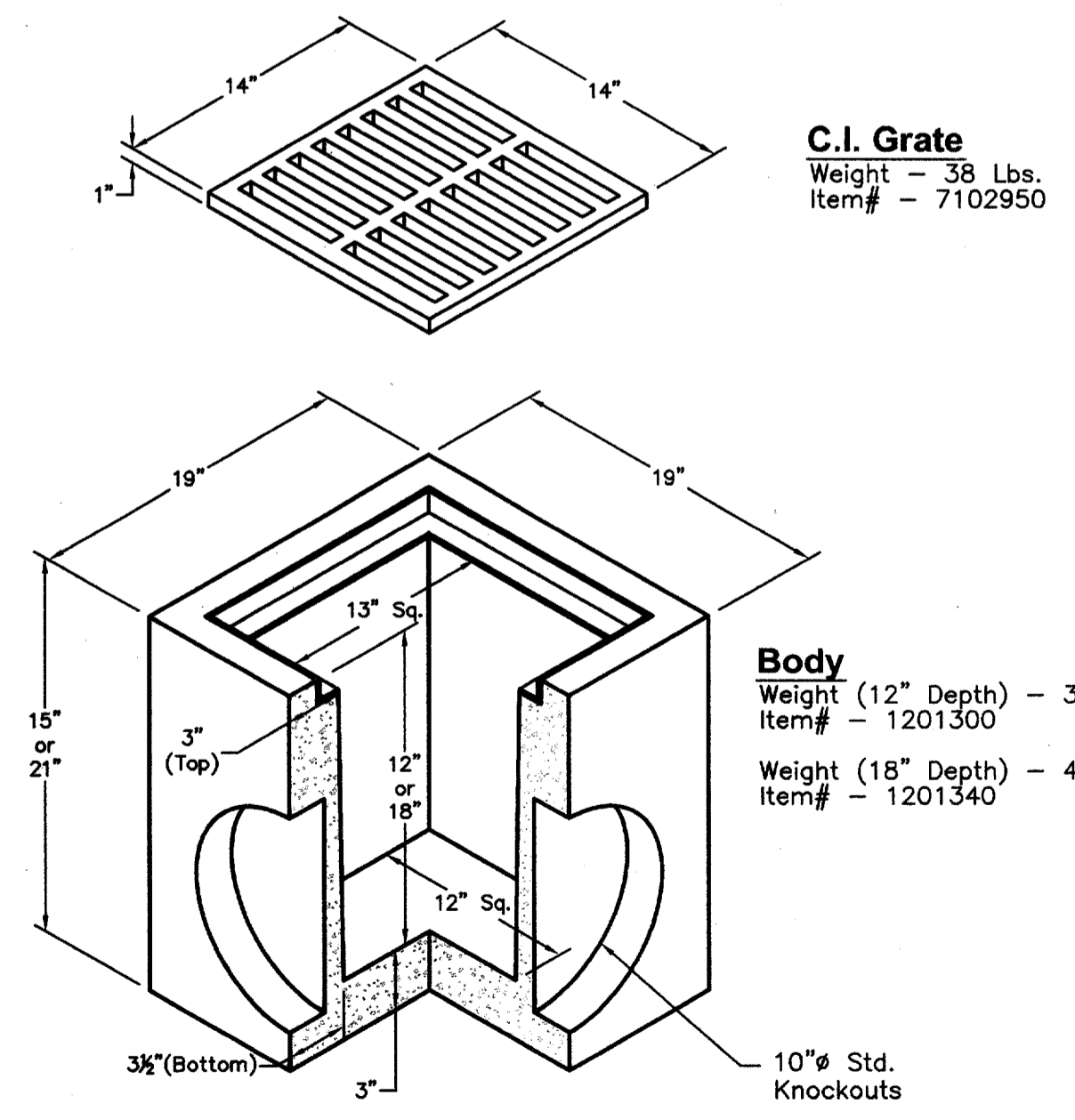
- NOTES:
- MATERIAL AND WORKMANSHIP SHALL CONFORM WITH THE REQUIREMENTS OF NCTCOG STANDARD SPECIFICATIONS FOR STANDARD CONCRETE MANHOLES. MINIMUM CLASS "A" CONCRETE.
 - LAYERS OF REINFORCING STEEL NEAREST THE INTERIOR AND EXTERIOR SURFACES SHALL HAVE A COVER OF 2" TO THE CENTER OF BARS, UNLESS OTHERWISE NOTED.
 - FOR DETAILS OF REINFORCING OF LOWER PORTIONS OF INLET SEE APPROPRIATE SQUARE MANHOLE DETAILS.
 - DEPTH OF DROP INLET FROM FINISHED GRADE TO FLOW LINE OF INLET IS VARIABLE. APPROXIMATE DEPTH WILL BE SHOWN ON PLANS AT LOCATION OF INLET.
 - ALL STANDARD DROP INLETS SHALL HAVE ONE OPENING ON EACH SIDE UNLESS OTHERWISE SHOWN ON PLANS.
 - DECK MAY BE REINFORCED SAME AS 4' SQUARE MANHOLE.

DROP INLET
N.T.S.

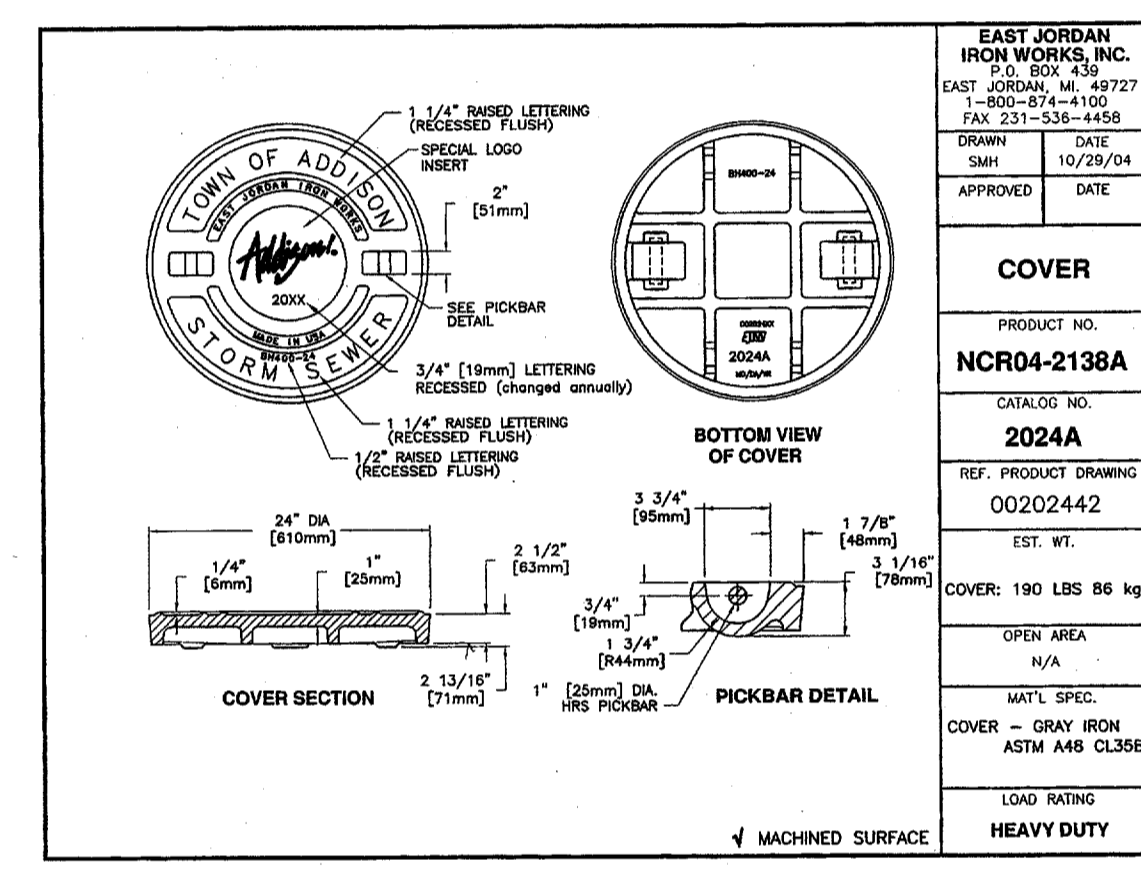
- GENERAL NOTES:
- ALL CONCRETE SHALL BE CLASS "A" CONCRETE.
 - REINFORCING BARS SHALL BE STANDARD GRADE STEEL, DEFORMED REINFORCING BARS OF A DIAMETER AND LENGTH AS SHOWN.
 - CHAMFER ALL EXPOSED CORNERS 3/4" EXCEPT WHERE OTHERWISE NOTED.
 - DIMENSIONS RELATING TO REINFORCING STEEL ARE TO CENTERS OF BARS.
 - FIELD CUT AND BEND BARS AS NECESSARY TO ACCOMMODATE STORM SEWER PIPE.
 - RING AND COVER SHALL BE APPROVED BY THE OWNER AND INSTALLED BY THE CONTRACTOR.



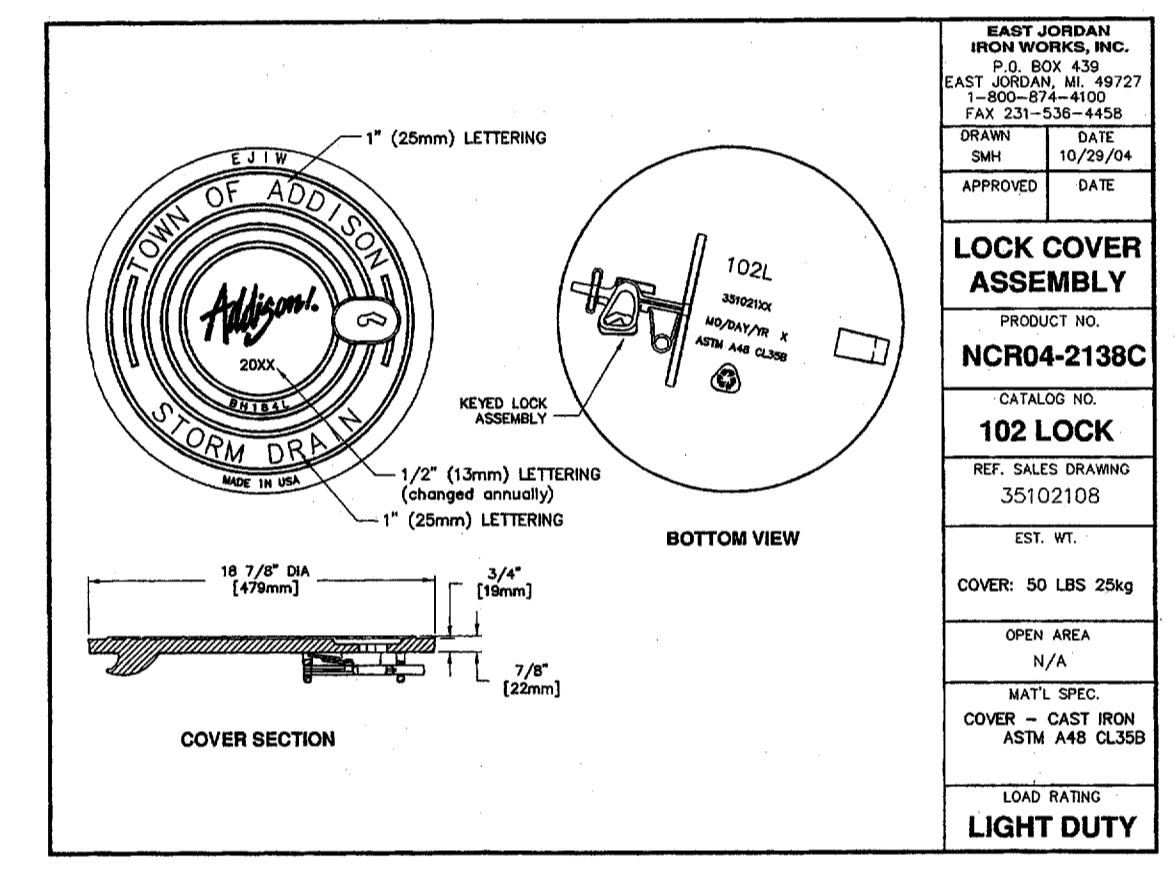
STORM SEWER CURB INLET
N.T.S.



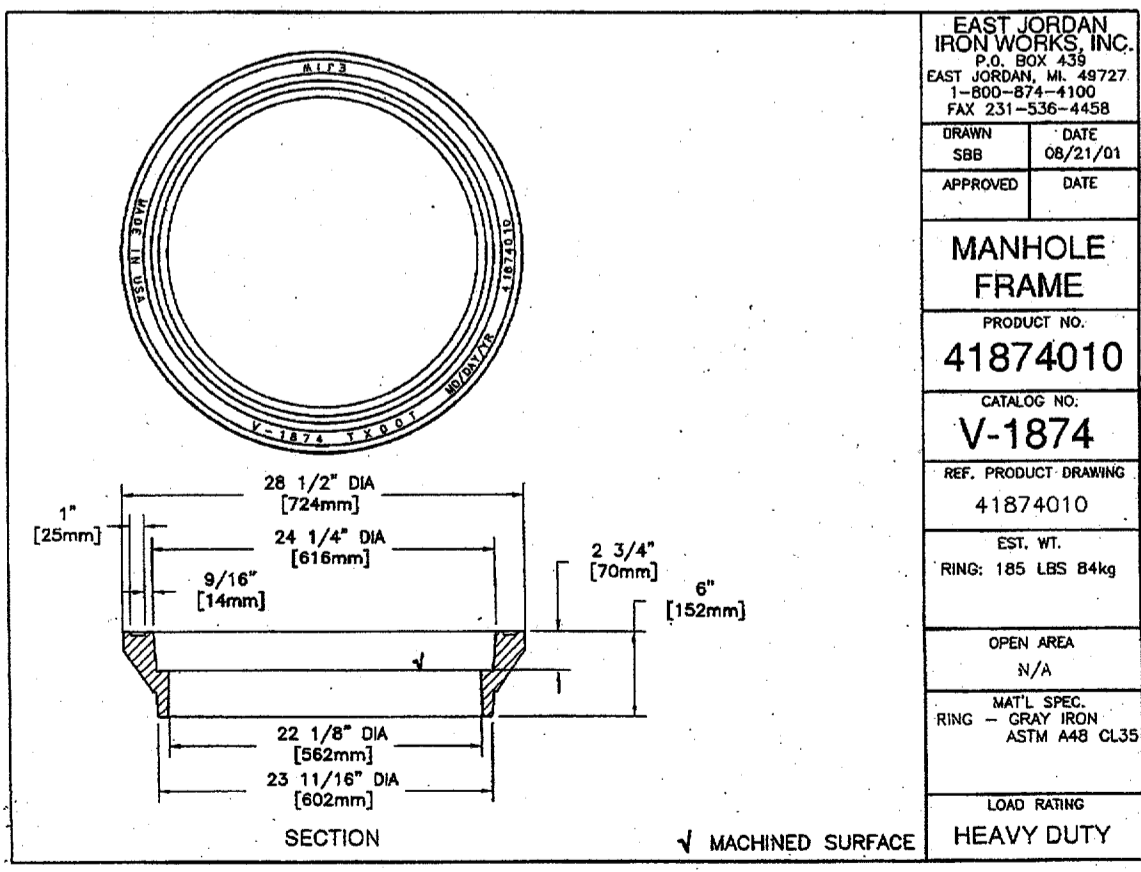
NO. 12 GRATE INLET
N.T.S.



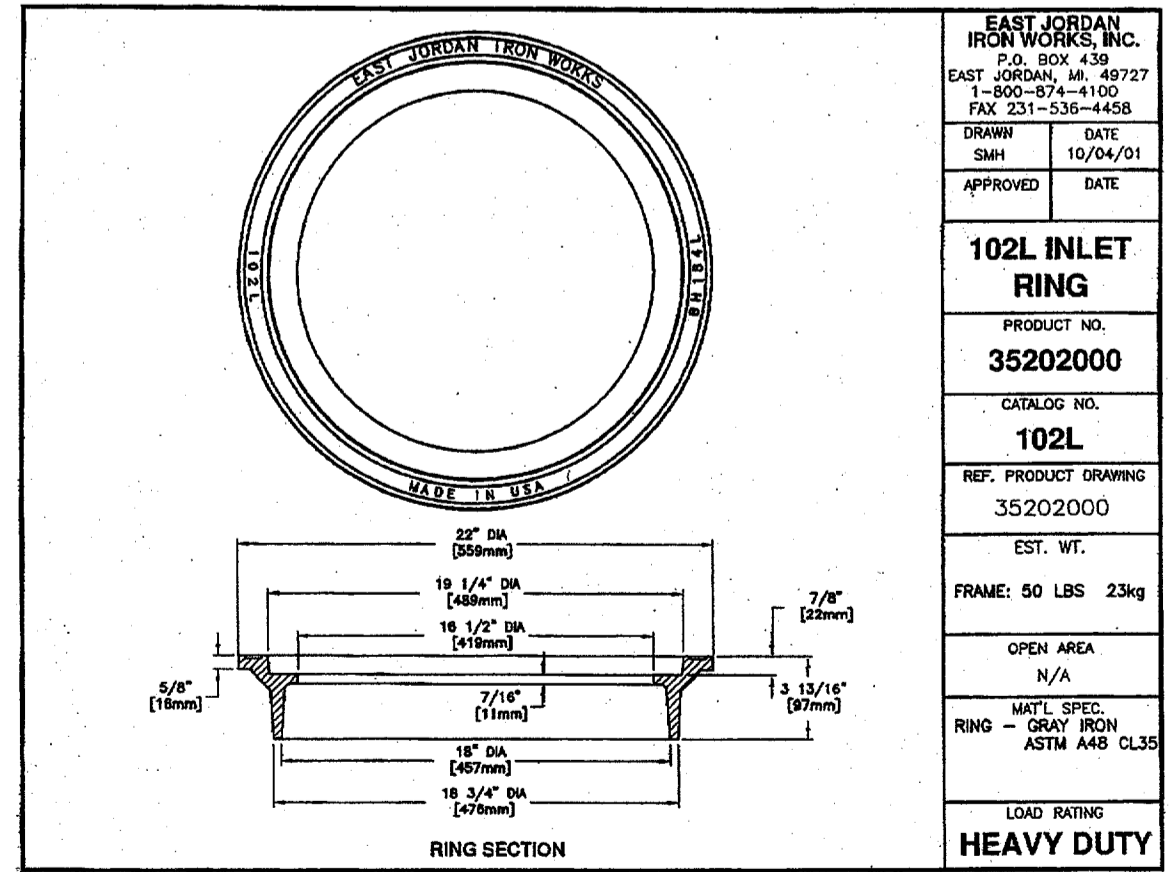
STORM SEWER COVER DETAIL
N.T.S.



STORM DRAIN LOCK COVER ASSEMBLY DETAIL
N.T.S.



MANHOLE FRAME DETAIL
N.T.S.



INLET RING DETAIL
N.T.S.

"RECORD DRAWING"
THIS DRAWING HAS BEEN REVISED TO SHOW THOSE CHANGES DURING THE CONSTRUCTION PROCESS REPORTED BY THE CONTRACTOR TO KIMLEY-HORN AND ASSOCIATES, INC. AND CONSIDERED TO BE SIGNIFICANT. THIS DRAWING IS NOT GUARANTEED TO BE "AS-BUILT" BUT IS BASED ON THE INFORMATION MADE AVAILABLE.
DATE: 11-17-05 BY: *[Signature]*

Scale: AS SHOWN
Designed by: ABC
Drawn by: ABC
Checked by: B.P.
Dated: MAY 2005
Project No. 063984003

SHEET C-12 OF 12

Revisions: App. No. Date

PROFESSIONAL ENGINEER
BRIAN J. PARKER
90248

ON THE BORDER
SANITARY SEWER
DETAILS

OTB RELOCATION
OTB ADDISON
BELTLINE ROAD
ADDISON, TEXAS

Prototype 9.3

Kimley-Horn and Associates, Inc.
12700 Park Central Drive, Suite 1800
Dallas, Texas 75251
Tel. No. (972) 776-1300
Fax No. (972) 239-3920