

ADDISON ROAD
VARIABLE WIDTH PUBLIC RIGHT-OF-WAY

REMOVE EXIST. INLET AND
±35 L.F. OF 27" PIPE

REMOVE EXIST. INLET AND
±35 L.F. OF 27" PIPE

REMOVE EXIST. INLET AND
±35 L.F. OF 27" PIPE

REMAINDER OF
LOT 1, BLOCK A
BELTWAY-CENTRE ADDITION
VOL. 2004014, PG. 00009
D.R.D.C.T.
(ZONED C-1)

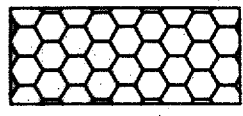
LOT 1A, BLOCK A
1.758 AC. (76,600 S.F.)
ZONED C-1

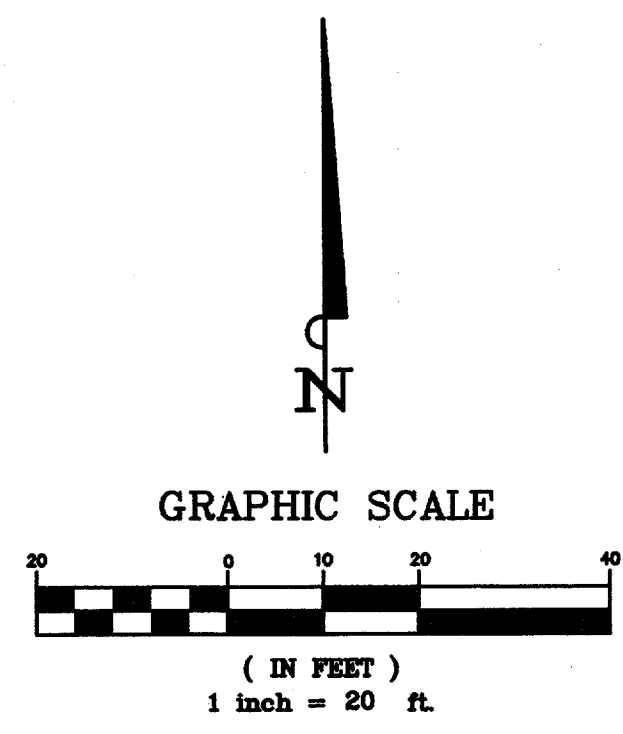
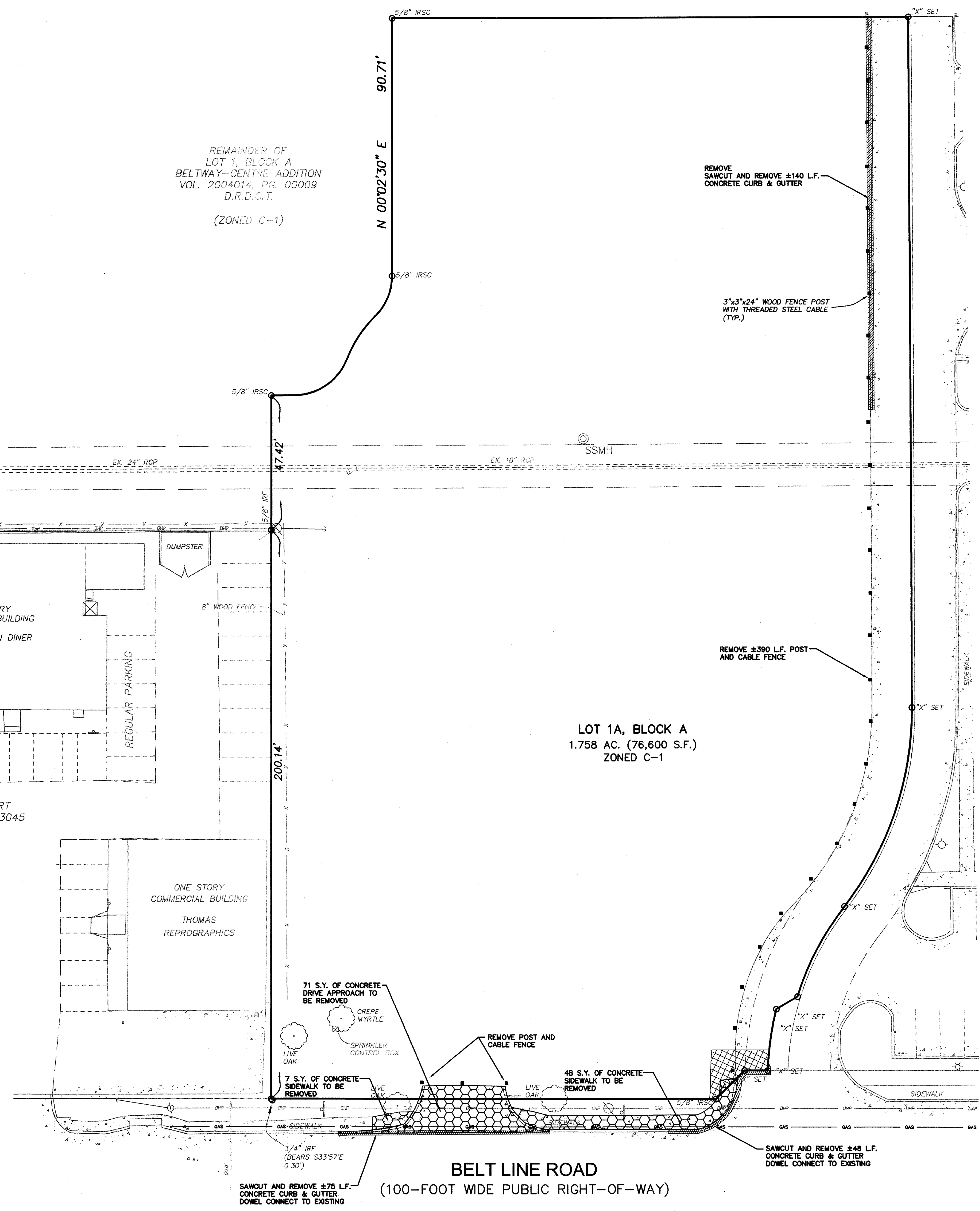
MARK A. ALBERT
VOL. 97002, PG. 3045
D.R.D.C.T.
ZONED "LR"

ONE STORY
COMMERCIAL BUILDING
THOMAS
REPROGRAPHICS

ONE STORY
COMMERCIAL BUILDING
PEI WEI ASIAN DINER

LEGEND

 PAVEMENT TO BE REMOVED



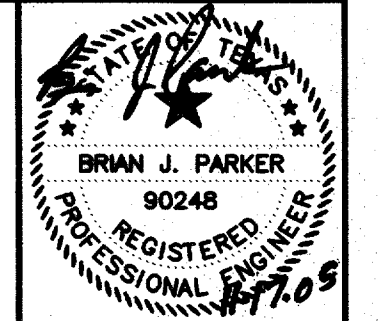
STOP!
CALL BEFORE YOU DIG
DIG TESS
1-800-DIG-TESS
(@ least 72 hours prior to digging)

BENCHMARK:
WATER DEPARTMENT BENCHMARK IN CENTER OF SOUTH CONCRETE
HEADWALL OF A 6'X3'X46" CONCRETE BOX CULVERT ON SOUTH SIDE OF
BELT LINE ROAD AND 22.7 FEET EAST OF CENTERLINE OF ST. LOUIS &
SOUTHWESTERN RAILROAD AT ADDISON ROAD.
ELEVATION = 634.15

"RECORD DRAWING"
THIS DRAWING HAS BEEN REVISED TO SHOW THOSE
CHANGES DURING THE CONSTRUCTION PROCESS
REPORTED BY THE CONTRACTOR TO KIMLEY-HORN
AND ASSOCIATES, INC. AND CONSIDERED TO BE
SIGNIFICANT. THIS DRAWING IS NOT GUARANTEED
TO BE "AS-BUILT" BUT IS BASED ON THE
INFORMATION MADE AVAILABLE.
DATE: 11-17-05 BY: *B.J. Park*

No.	Date	Revisions	App.

**Kimley-Horn
and Associates, Inc.**
12700 Park Central Drive, Suite 1800
Dallas, Texas 75251
Tel. No. (972) 770-1300
Fax No. (972) 238-3820



PROTOTYPE 9.3
OTB RELOCATION
OTB ADDISON
BELTLINE ROAD
ADDISON, TEXAS

ON THE BORDER
SPECIALTY CONTRACTORS
& CONSULTANTS

DEMOLITION PLAN

Scale:	AS SHOWN
Designed by:	ABC
Drawn by:	ABC
Checked by:	BJP
Date:	MAY 2005
Project No.:	063984003

SHEET
C-2
OF
12