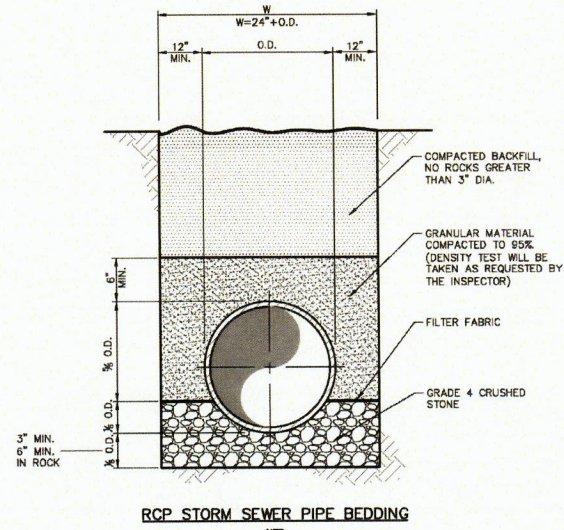
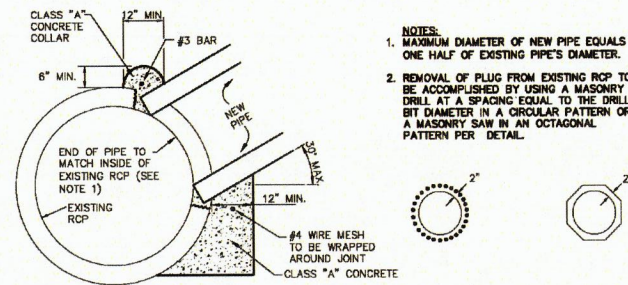


**STORM SEWER - GENERAL NOTES:**

1. ALL CONCRETE DRAINAGE STRUCTURES SHALL BE CLASS C CONCRETE MINIMUM.
2. ALL CRUSHED STONE SHALL BE 3/4", PASSING #4 SIEVE (GRADE 4).
3. ALL FIELD JOINTS WILL BE APPROVED BY THE TOWN ENGINEER IF NECESSARY. FIELD JOINTS SHALL BE WIPED ON THE INSIDE AND OUTSIDE TO PROVIDE FOR SMOOTH FLOW OF WATER.
4. RAMNECK COMPOUND OR APPROVED EQUAL SHALL BE USED FOR JOINT SEALS.
5. ALL STORM SEWER PIPE SHALL BE CAMERA INSPECTED AFTER THE INSTALLATION OF ALL PAVING AND UTILITIES AND PRIOR TO FINAL ACCEPTANCE OF THE PROJECT.

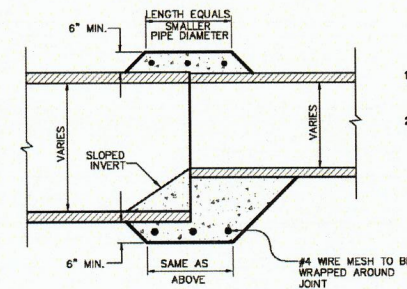


NOTE:  
1. THE DEPTH OF TRENCH BELOW THE PROPOSED CONDUIT SHALL BE AS FOLLOWS:  
- 3" MIN. FOR 27" PIPE & SMALLER.  
- 4" MIN. FOR 30" TO 60" PIPE.  
- 6" MIN. FOR 66" PIPE OR LARGER.



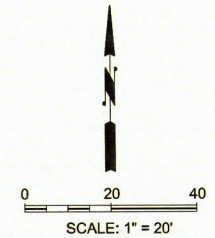
- NOTES:
1. MAXIMUM DIAMETER OF NEW PIPE EQUALS ONE HALF OF EXISTING PIPE'S DIAMETER.
  2. REMOVAL OF PLUS FROM EXISTING RCP TO BE ACCOMPLISHED BY USING A MASONRY DRILL AT A SPACING EQUAL TO THE DRILL BIT DIAMETER IN A CIRCULAR PATTERN OR A MASONRY SAW IN AN OCTAGONAL PATTERN PER DETAIL.

**CONNECTION TO EXISTING RCP STORM DRAIN**



- NOTES:
1. THIS PROCEDURE/DETAIL WILL ONLY BE USED WHEN A PREFAB REDUCTION IS NOT POSSIBLE.
  2. CONCRETE SHALL BE CLASS A.

**PIPE COLLAR**



Addison!  
PUBLIC WORKS DEPARTMENT

STORM SEWER  
GENERAL NOTES

STANDARD CONSTRUCTION DETAILS STORM DRAINAGE		
DATE:	REV DATE:	SHEET:
AUGUST, 2010	-	SD-001

Addison!  
PUBLIC WORKS DEPARTMENT

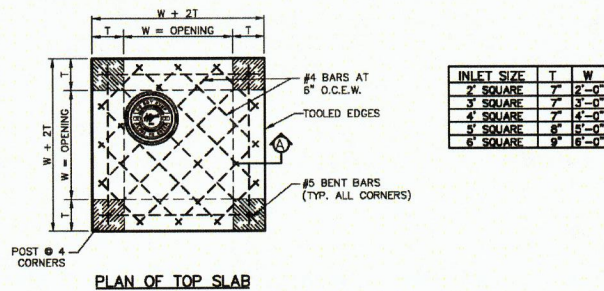
RCP STORM SEWER  
PIPE BEDDING

STANDARD CONSTRUCTION DETAILS STORM DRAINAGE		
DATE:	REV DATE:	SHEET:
AUGUST, 2010	-	SD-003

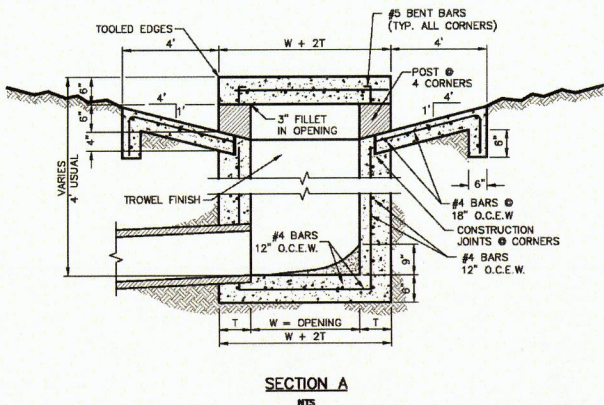
Addison!  
PUBLIC WORKS DEPARTMENT

CONNECTION TO EXISTING  
RCP STORM DRAIN  
PIPE COLLAR

STANDARD CONSTRUCTION DETAILS STORM DRAINAGE		
DATE:	REV DATE:	SHEET:
AUGUST, 2010	-	SD-005



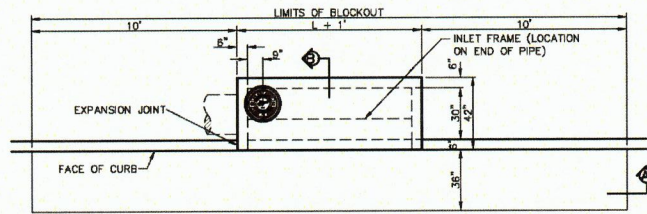
INLET SIZE	T	W
2" SQUARE	7"	2'-0"
3" SQUARE	7"	3'-0"
4" SQUARE	7"	4'-0"
5" SQUARE	8"	5'-0"
6" SQUARE	9"	6'-0"



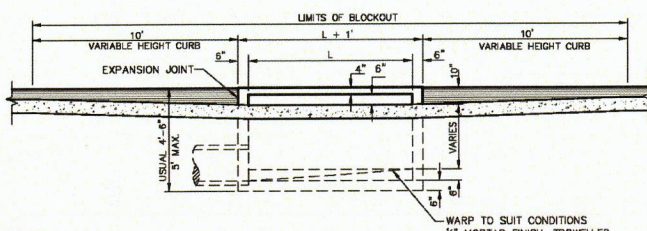
**SECTION A**

WYE INLET DETAIL

STANDARD CONSTRUCTION DETAILS STORM DRAINAGE		
DATE:	REV DATE:	SHEET:
AUGUST, 2010	-	SD-009



**PLAN-STANDARD INLET**



**SECTION A**

STANDARD CURB INLET

- NOTE:
1. PIPE MAY BE PLACED IN ANY WALL BUT SHALL NOT ENTER ANY CORNER OR BOTTOM.
  2. #3 BAR 18" O.C.E.W. IN BLOCK OUT DRILLED INTO EXISTING CONCRETE.
  3. BACKFILL AROUND INLET SHALL BE FLOWABLE BACKFILL PER MCTDCC 504.2.3.4

Addison!  
PUBLIC WORKS DEPARTMENT

STANDARD CONSTRUCTION DETAILS STORM DRAINAGE		
DATE:	REV DATE:	SHEET:
AUGUST, 2010	-	SD-010

THIS DOCUMENT IS RELEASED FOR THE PURPOSE OF PRICING AND INTERIM REVIEW UNDER THE AUTHORITY OF RICHARD CARSON, JR. P.E. NO. 40854 ON 2/6/15.

Benchmark

Town of Addison Control Point No. COA-5. 190 feet south from the intersection of Edwin Lewis Dr & Quorum Drive. Then 2 feet from the west edge of sidewalk, 50.5 feet from the west side of median in Quorum Dr & 76 feet from fire hydrant.  
NAVD 88 Elevation = 630.10'

16

**Piburn & Carson, LLC**  
801 E. Campbell Road - Suite 310  
Richardson, Texas 75081  
Ph: (972) 328-3800 Fax: (972) 328-3612  
www.piburnandcarson.com email: info@piburnandcarson.com  
Engineering Firm #12081-02 Engineering Firm #12081-02

**STORM SEWER DETAILS**  
HOME 2 SUITES by HILTON  
SITE DEVELOPMENT  
PUBLIC WORKS DEPARTMENT  
TOWN OF ADDISON, TEXAS

DESIGN	DRAWN	DATE	SCALE	NOTES	FILE	NO.
RC	JRG	2/6/15	1"=20'	PC	-	-

Filename: \\HD-HTTCL1\AF\share\Drawings\2013\13164-Home 2 Suites Addison\Design Data\Sheets\13164-C-STM01.dwg Date: Friday, February 06, 2015 Time: 2:06 PM Plotted by: Jorge Gonzalez