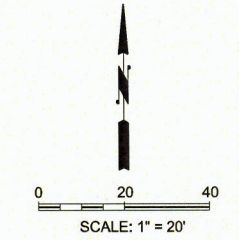
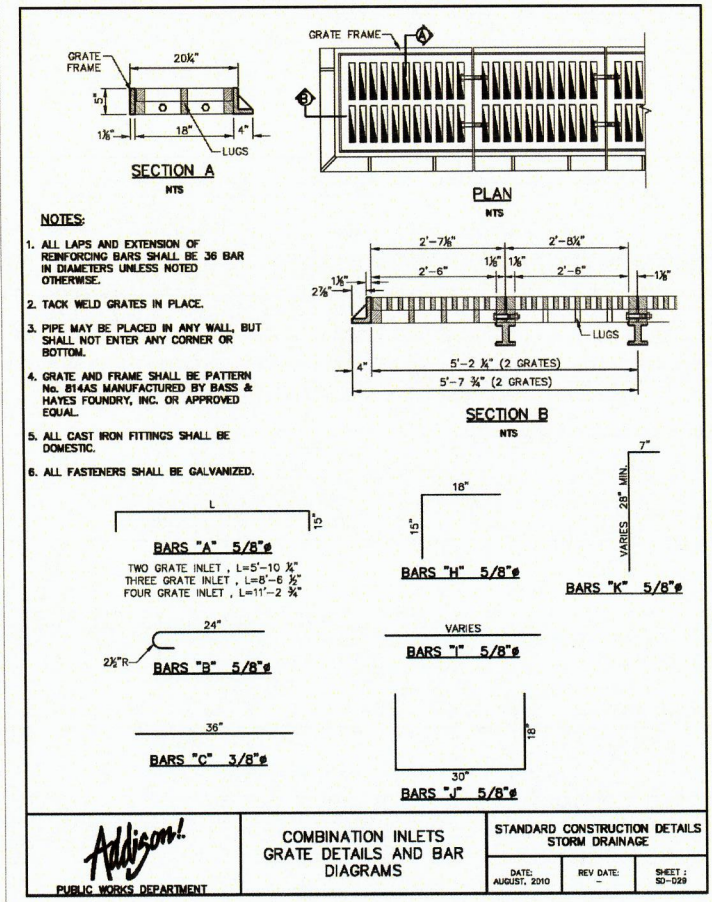
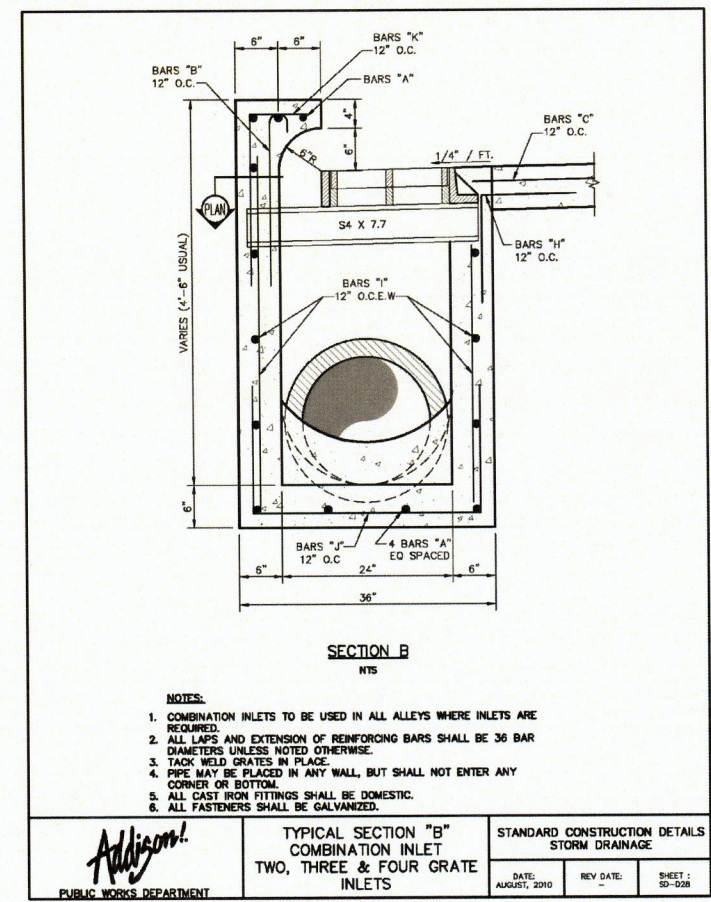
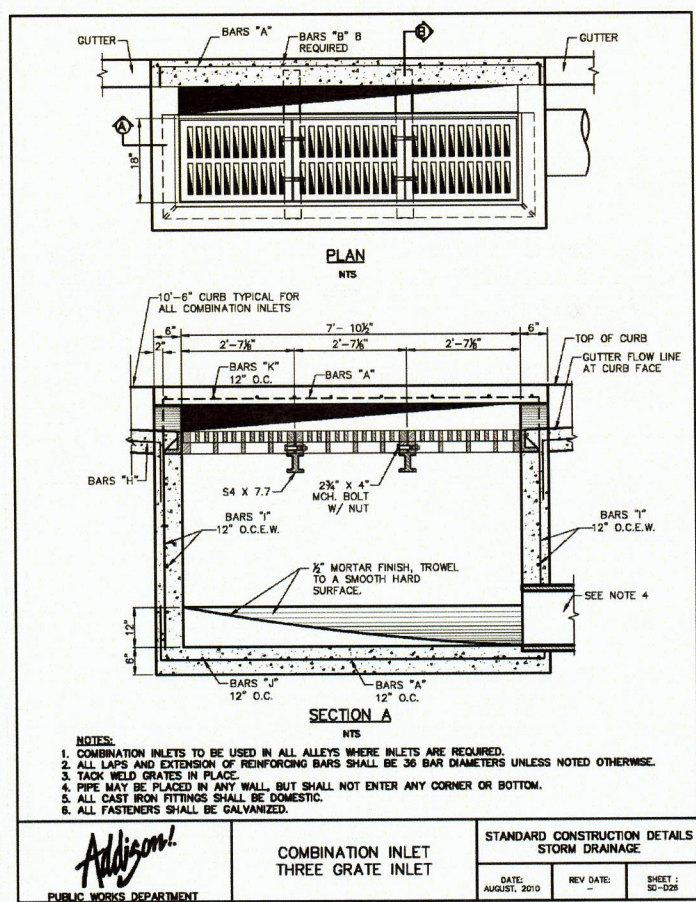


File name: \\WD-HT-GL14P-share\Drawings\2013\13184-Home 2 Suites Addison\Design Data\Sheets\13184-C-STM01.dwg Date: Friday, February 06, 2015 Time: 2:08 PM Plotted by: Jorge Gonzalez



<b>Addison!</b> PUBLIC WORKS DEPARTMENT	COMBINATION INLET THREE GRATE INLET	STANDARD CONSTRUCTION DETAILS STORM DRAINAGE		
		DATE: AUGUST, 2010	REV DATE: -	SHEET: SD-028

<b>Addison!</b> PUBLIC WORKS DEPARTMENT	TYPICAL SECTION "B" COMBINATION INLET TWO, THREE & FOUR GRATE INLETS	STANDARD CONSTRUCTION DETAILS STORM DRAINAGE		
		DATE: AUGUST, 2010	REV DATE: -	SHEET: SD-028

<b>Addison!</b> PUBLIC WORKS DEPARTMENT	COMBINATION INLETS GRATE DETAILS AND BAR DIAGRAMS	STANDARD CONSTRUCTION DETAILS STORM DRAINAGE		
		DATE: AUGUST, 2010	REV DATE: -	SHEET: SD-029

THIS DOCUMENT IS RELEASED FOR THE PURPOSE OF PRICING AND INTERIM REVIEW UNDER THE AUTHORITY OF RICHARD CARSON, JR. P.E. NO. 40854 ON 2/6/15.

Benchmark  
 Town of Addison Control Point No. COA-5. 190 feet south from the intersection of Edwin Lewis Dr & Quorum Drive. Then 2 feet from the west edge of sidewalk, 50.5 feet from the west side of median in Quorum Dr & 76 feet from fire hydrant.  
 NAVD 88 Elevation = 630.10'

 <b>Piburn &amp; Carson, LLC</b> <small>801 E. Campbell Street, Suite 515 Richardson, Texas 75081 Ph: (214) 328-2600 Fax: (214) 328-2612 www.piburncarson.com email: info@piburncarson.com Engineering Firm #10087-1-06</small>						
<b>STORM SEWER DETAILS</b>						
HOME 2 SUITES by HILTON						
SITE DEVELOPMENT						
PUBLIC WORKS DEPARTMENT						
TOWN OF ADDISON, TEXAS						
DESIGN	DRAWN	DATE	SCALE	NOTES	FILE	NO.
RC	JRG	2/6/15	1"=20'	PC	-	-