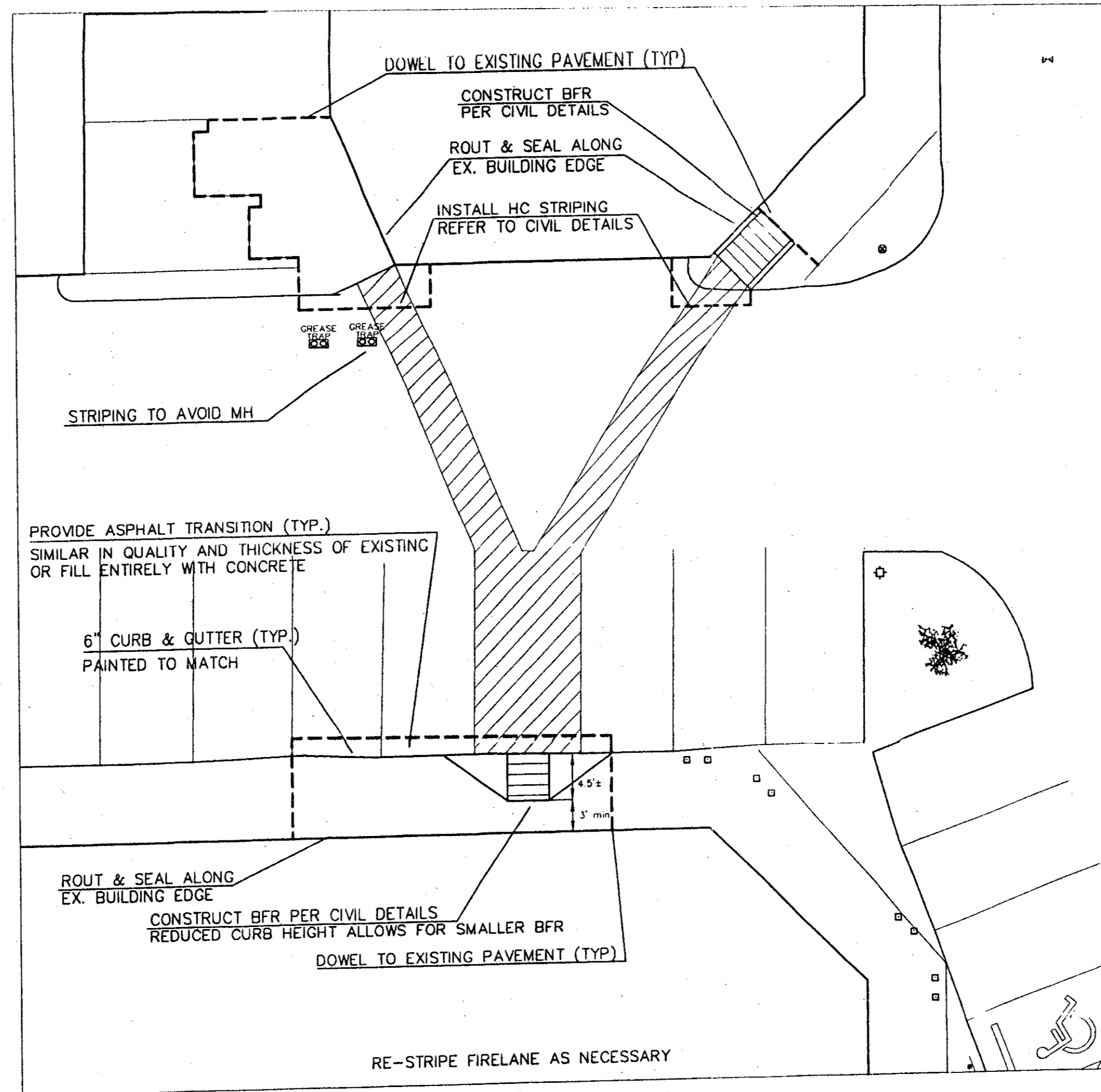
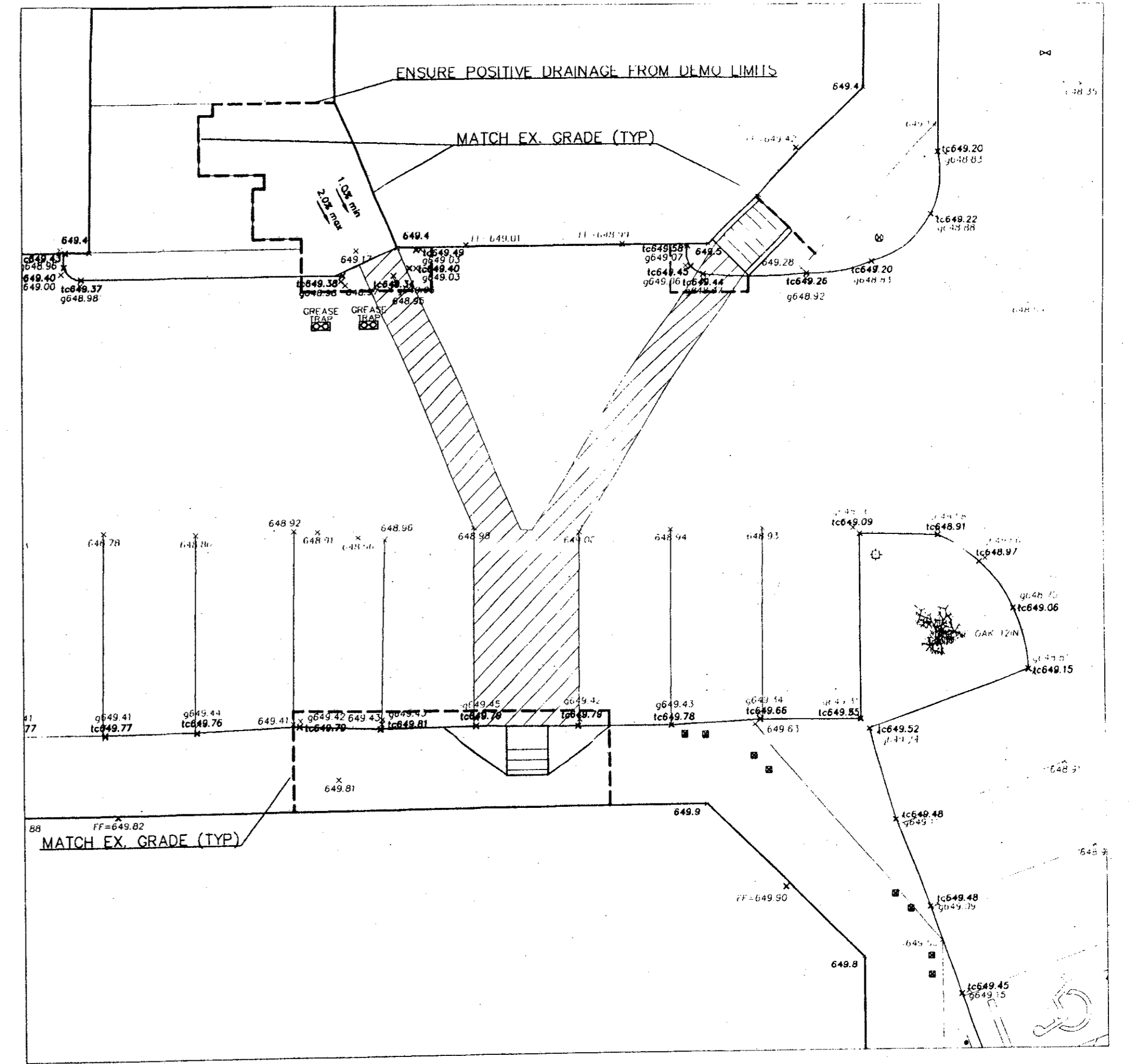


DETAIL 'A' - DEMOLITION PLAN
1"=10'



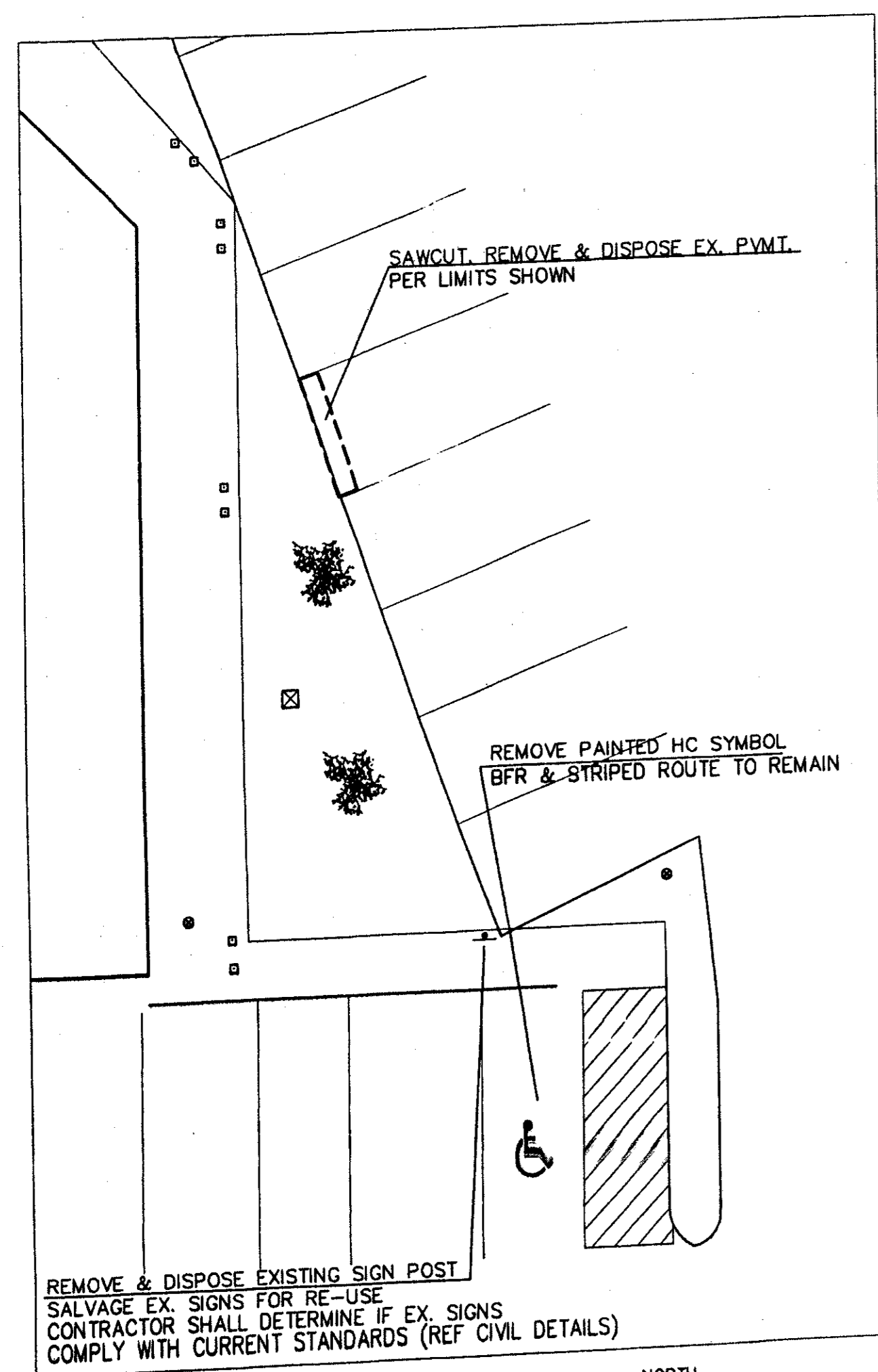
DETAIL 'B' - PAVING PLAN
1"=10'



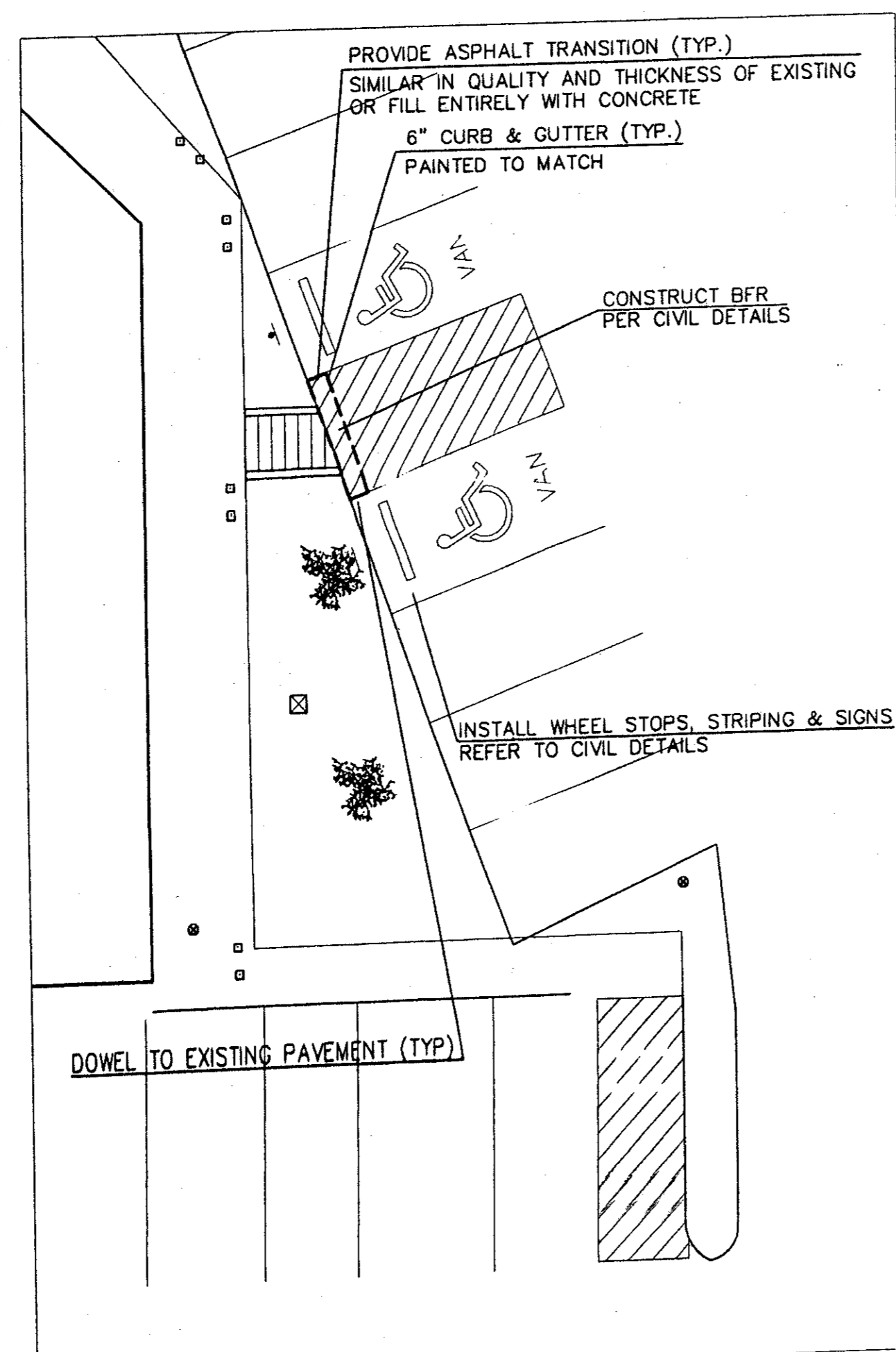
DETAIL 'C' - GRADING PLAN
1"=10'

ALL PROPOSED PAVEMENT JOINTS SHALL MATCH EXISTING JOINT PATTERN.

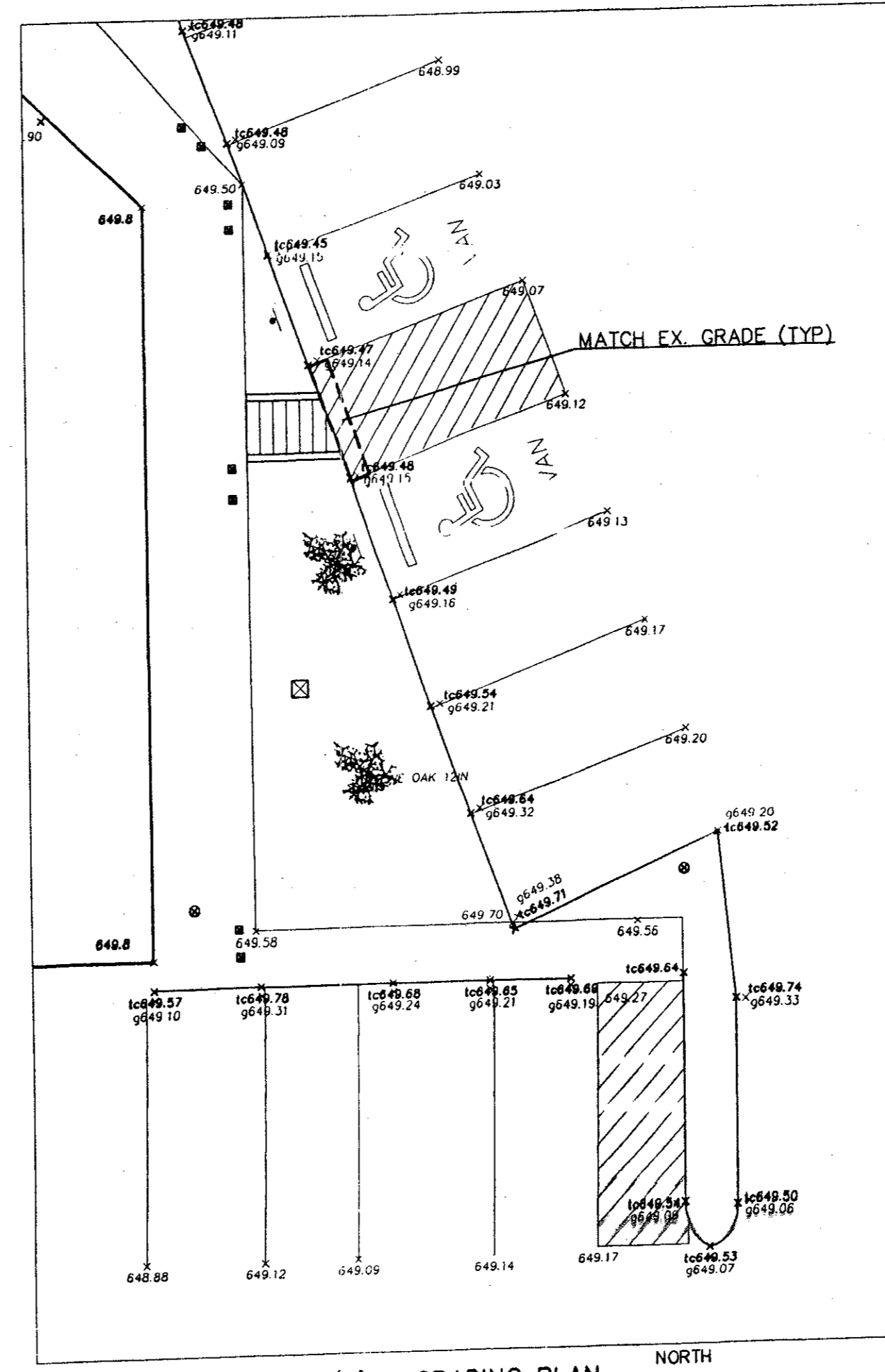
ALL SPOT ELEVATIONS ARE TOP OF PAVEMENT UNLESS OTHERWISE NOTED.



DETAIL 'D' - DEMOLITION PLAN
1"=10'



DETAIL 'E' - PAVING PLAN
1"=10'



DETAIL 'F' - GRADING PLAN
1"=10'

ALL PROPOSED PAVEMENT JOINTS SHALL MATCH EXISTING JOINT PATTERN.

ALL SPOT ELEVATIONS ARE TOP OF PAVEMENT UNLESS OTHERWISE NOTED.

LEGEND

- - - Sawcut
- 40.00 Existing Spot Elevation
- 40.05 Proposed Spot Elevation

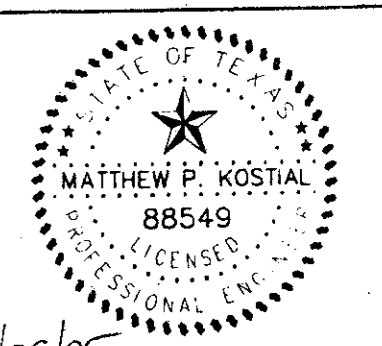
CONCRETE PAVING SECTIONS

- 3000 PSI Reinf. Conc. Pavement w/ #3 @ 24" OFFW
- (4" minimum thickness for sidewalk areas)
- (5" minimum thickness for parking areas)

* Subgrade shall be compacted to a min. of 95% of its maximum Standard Proctor dry density (ASTM D-698) at a moisture content in the range of -2% to +3% as determined by that test.

Town of Addison Benchmark 20
BM ELEVATION = 638.13'

Square cut in concrete on inlet 400 feet south of Beltline Road on the East side of Landmark Blvd.



10/05/05
M. Kostal

PLAZA AT THE QUORUM II

PAVING PLAN
TOWN OF ADDISON
DALLAS COUNTY, TEXAS
ORACLE ENGINEERING

7012 Lindley Avenue
Dallas, Texas 75223
TELE (214) 321-1436
FAX (214) 853-9381

DESIGN	DRAWN	DATE	SCALE	F	NO
MPK	MPK	10/2005	1"=10'	-	C7