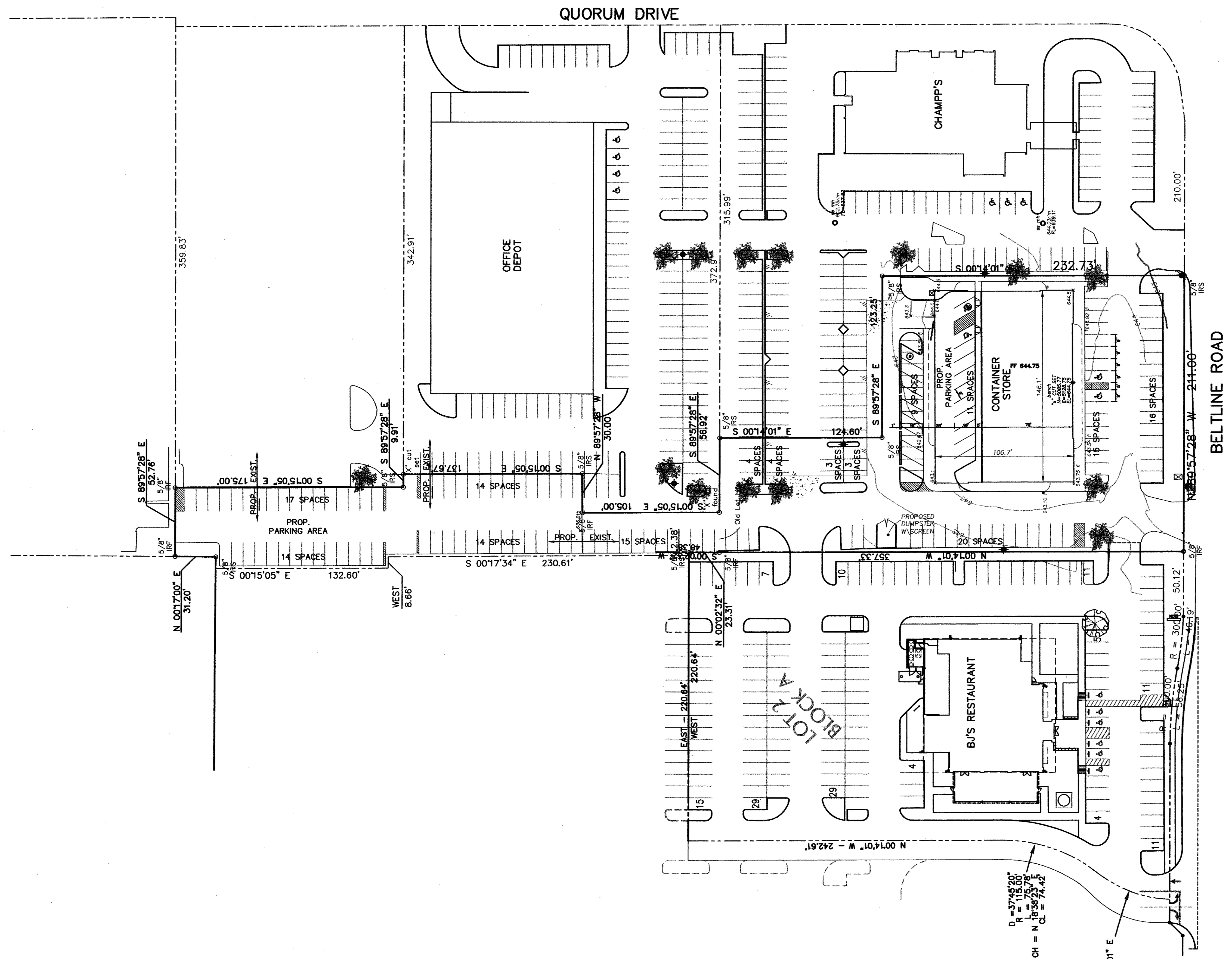


SITE CRITERIA
 Lot Sq. Ft. = 82,630.32 s.f.
 Building Area = 15,509.42 s.f.
 Parking Provided = 159 SPACES



$D = 3745.20'$
 $R = 115.90'$
 $L = 1639.23'$
 $CH = N 19^{\circ}47'01'' E$
 $CL = 60.92'$

$D = 3528.03'$
 $R = 100.00'$
 $L = 61.90'$
 $CH = N 19^{\circ}47'01'' E$
 $CL = 60.92'$

SITE PLAN						
CONTAINER STORE						
TOWN OF ADDISON, TEXAS						
BROCKETTE • DAVIS • DRAKE, INC. consulting engineers Civil & Structural Engineering • Surveying 4144 North Central Expressway, Suite 1100 • Dallas, Texas 75204 (214) 824-3647 • fax (214) 824-7064						
DESIGN	DRAWN	DATE	SCALE	NOTES	FILE	NO.
JAR	DJR	10/15/03	1"=40'	BDD	C03244	C4

James A. Riley
 10-15-03

Copyright 2002 Brockett/Davis/Drake, Inc. All Rights Reserved.
 This drawing is the property of Brockett/Davis/Drake, Inc.
 Any modification or use of this drawing without the express
 written authorization of Brockett/Davis/Drake, Inc. is prohibited.

SITE-CSDWG