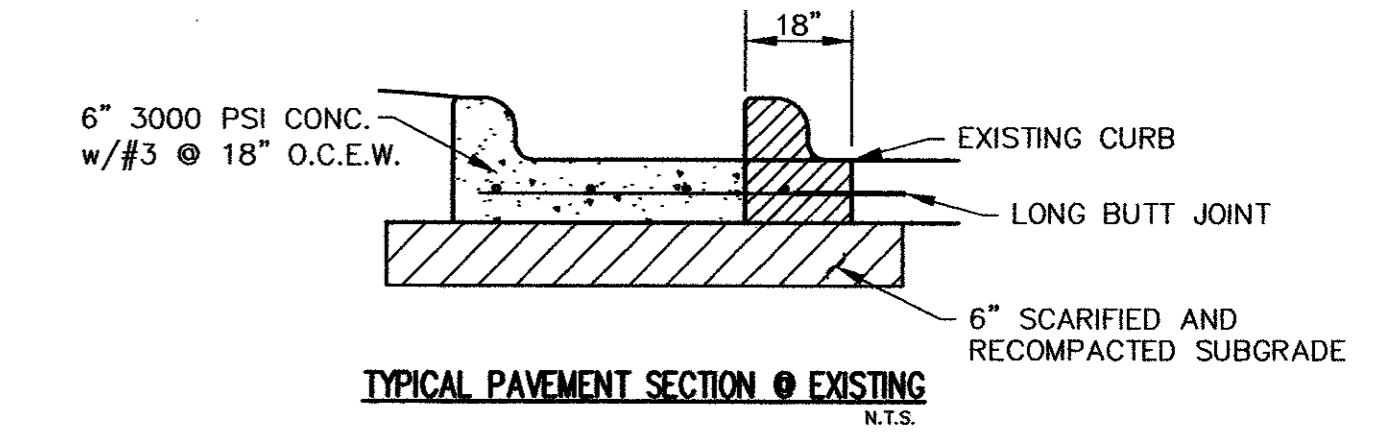
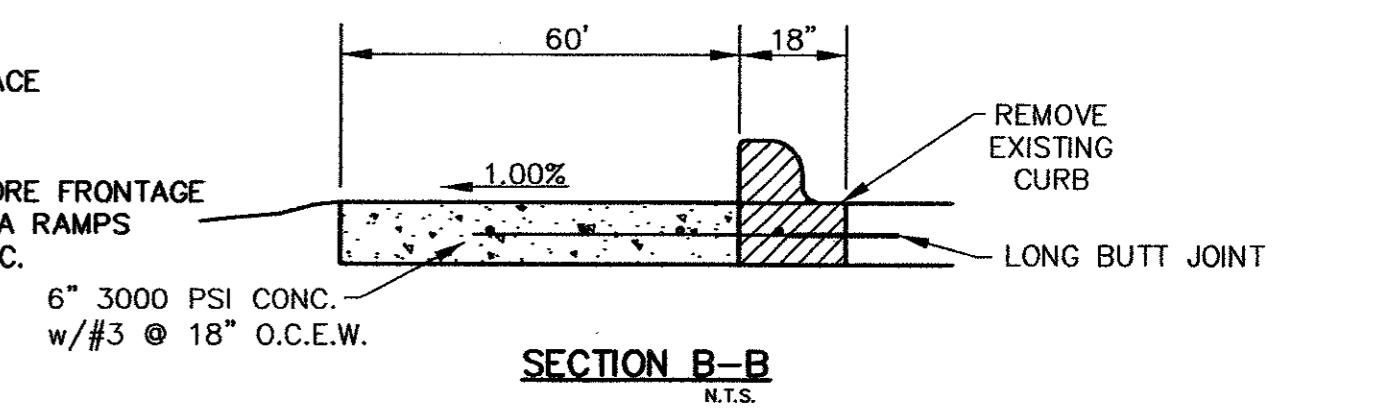
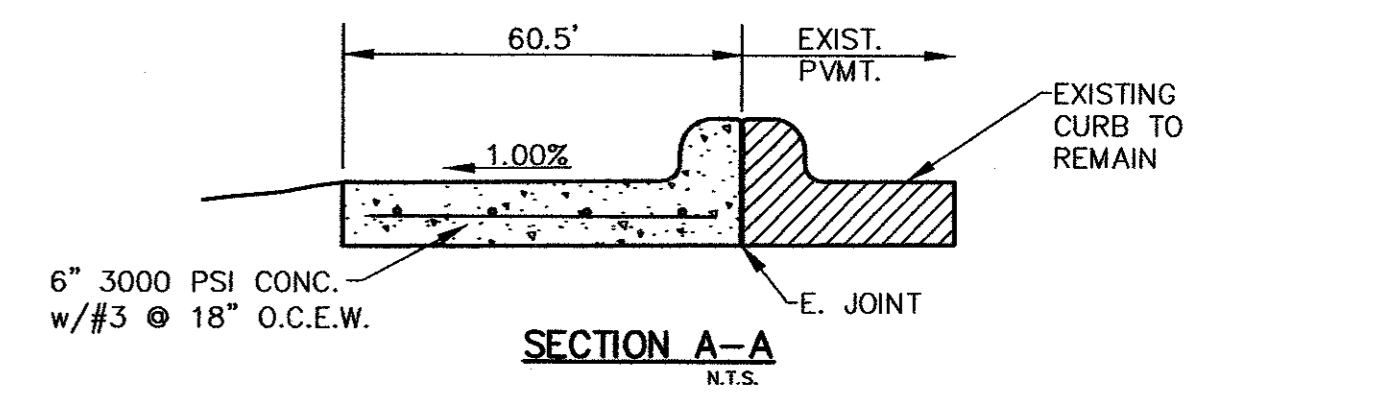
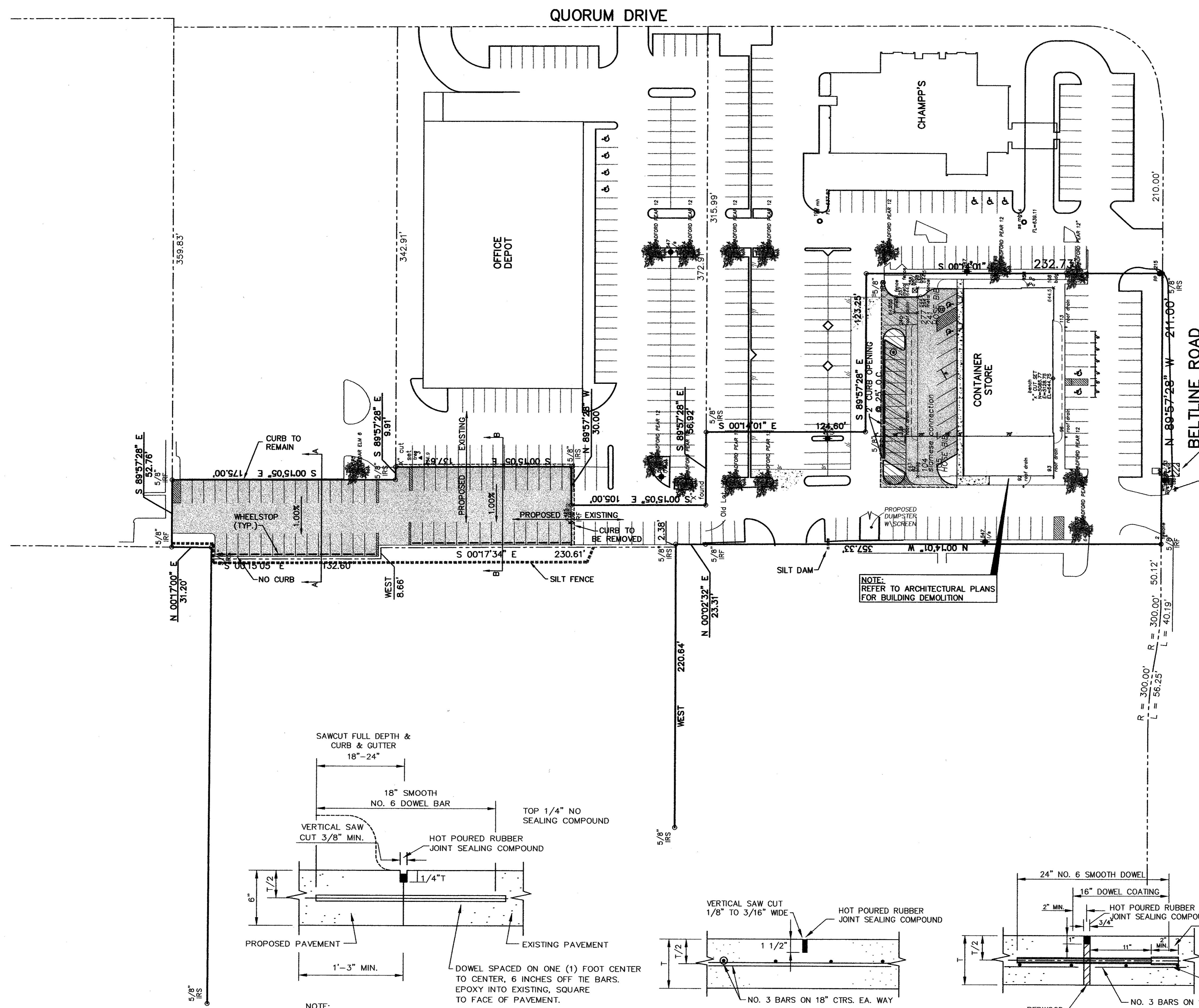


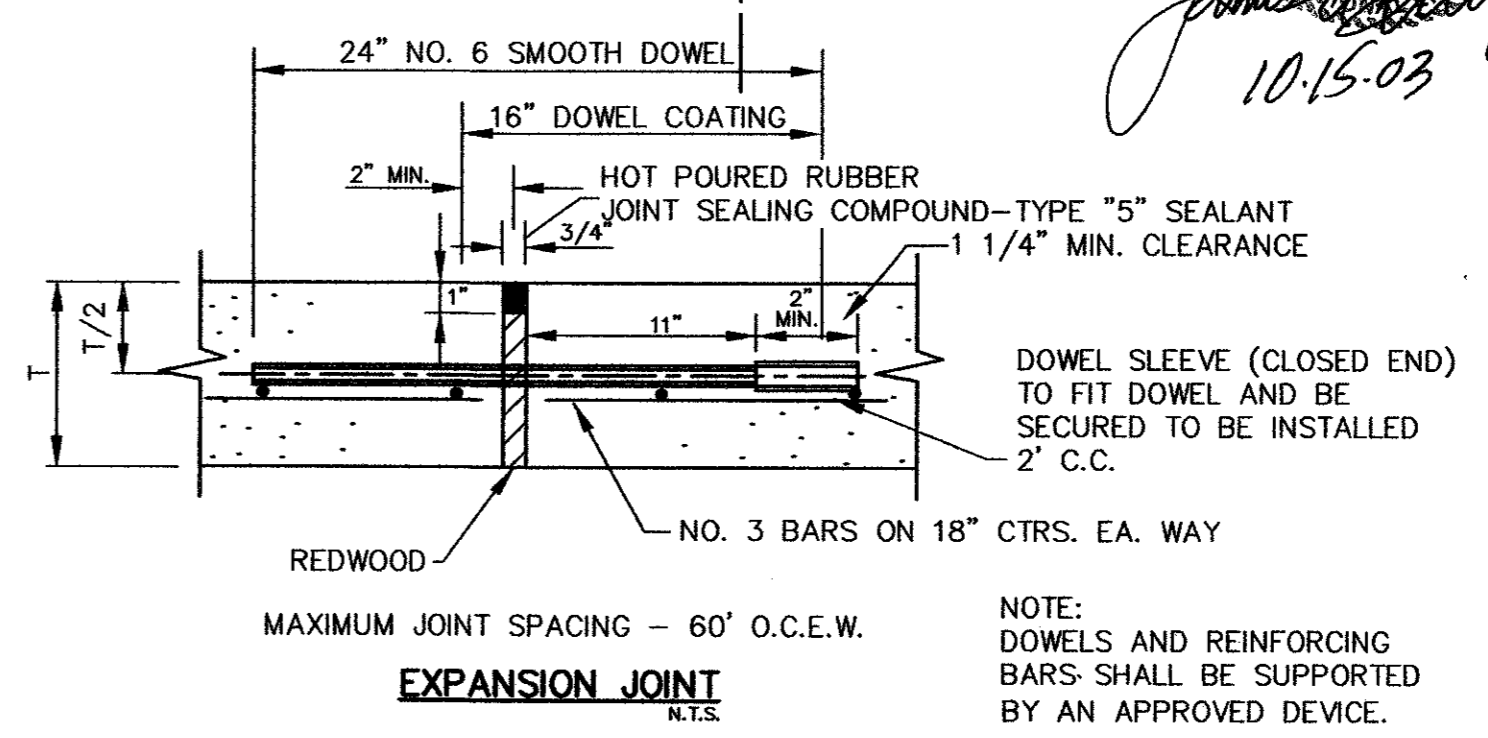
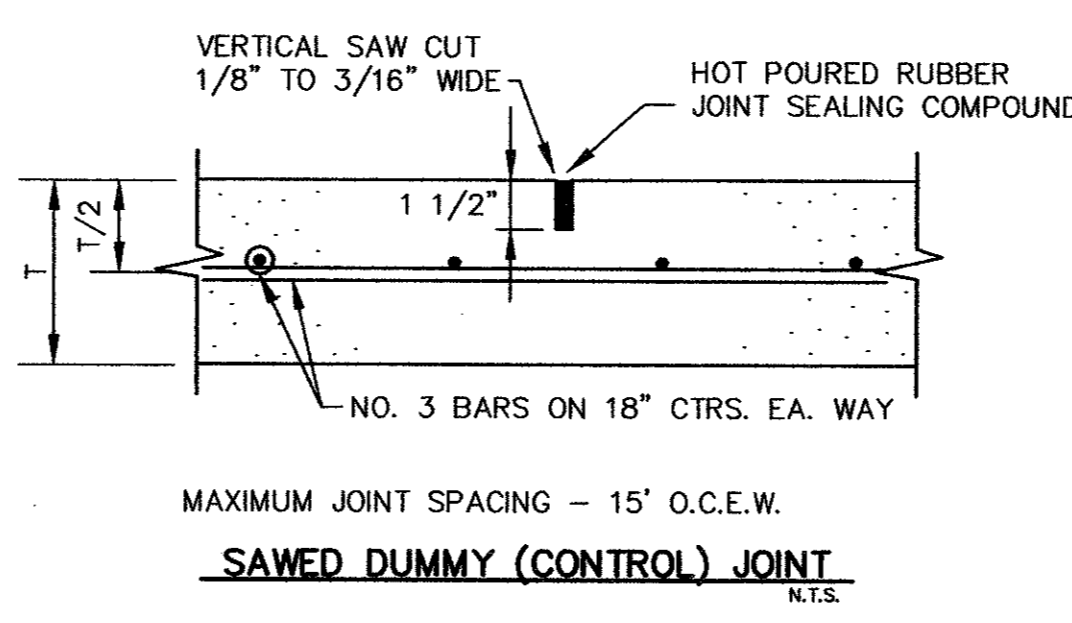
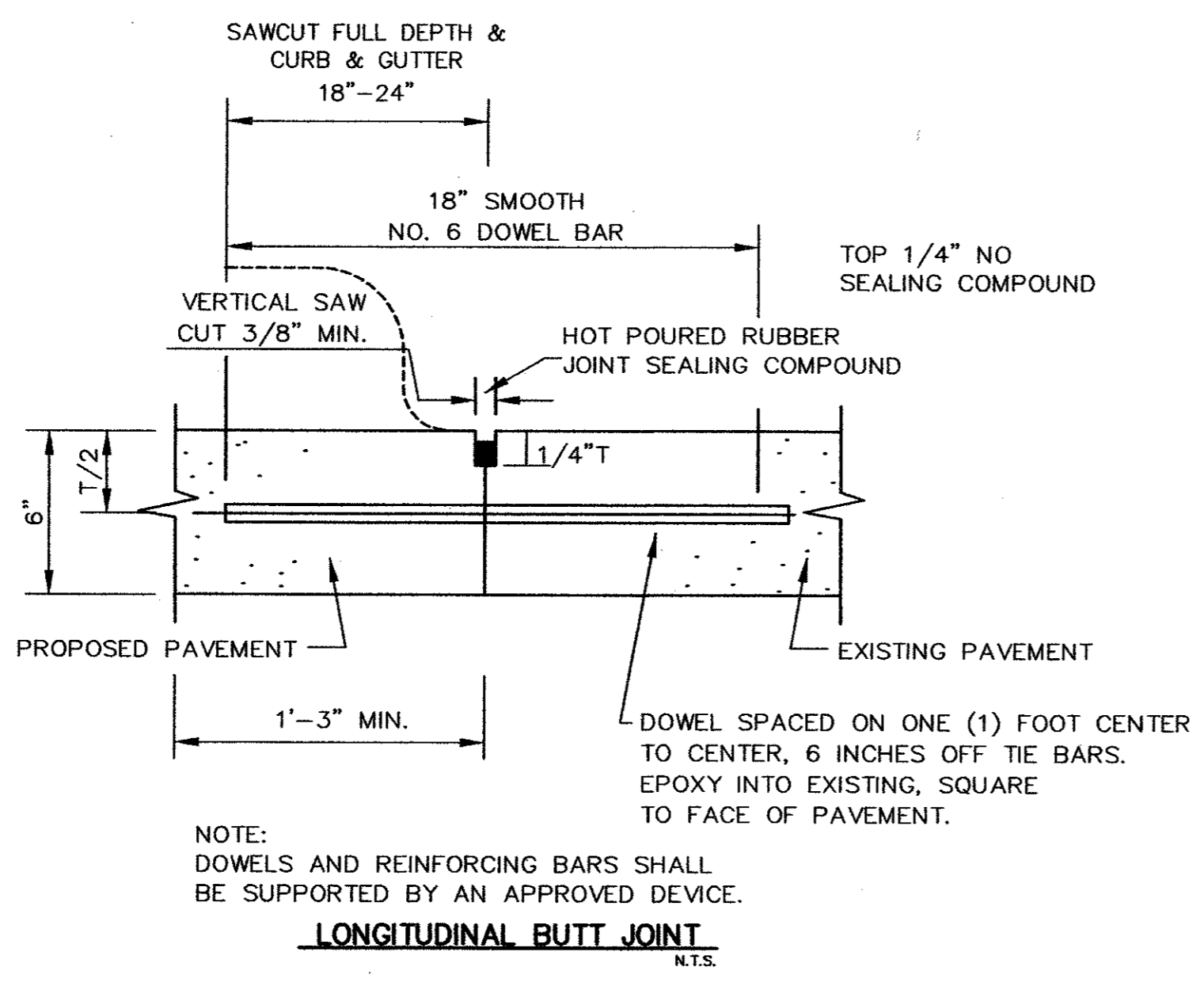
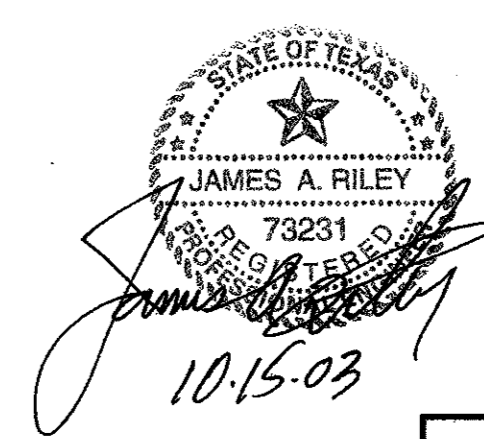
PAVING GENERAL NOTES

1. All fill shall be compacted to 95% Standard Proctor Density in a maximum of 6" (six) inch lifts or per Geotechnical Engineers Report.
2. Paving Contractor is responsible for all lay down curbs at intersections where barrier free ramps are to be constructed.
3. The contractor shall provide, construct, and maintain barricades and signs in accordance with the Texas Manual of Uniform Traffic Control Devices.
4. Sawed joints shall be every 15 feet for 6" thick concrete and every 20 feet for 8" thick concrete.
5. All machine placed concrete shall be minimum 3000 psi concrete and all hand placed concrete shall be minimum 4000 psi concrete.



LEGEND

- Existing Pavement To Be Removed
- 6" 3000 PSI Reinf. Conc. Pavement w/ #3 @ 18" O.C.E.W.
- 4" 3000 PSI Reinf. Conc. Pavement w/ #3 @ 18" O.C.E.W.
- Sawcut
- Silt Fence



PAVING PLAN
CONTAINER STORE
 CITY OF ADDISON, TEXAS

B BROCKETTE • DAVIS • DRAKE, INC.
 consulting engineers
 Civil & Structural Engineering • Surveying
 4144 North Central Expressway, Suite 1100 • Dallas, Texas 75204
 (214) 824-3647 • fax (214) 824-7064

DESIGN	DRAWN	DATE	SCALE	NOTES	FILE	NO.
JAR	DJR	10/15/03	1"=40'	BDD	C03244	C5

Copyright 2002 Brockett/Davis/Drake, Inc. All Rights Reserved.
 This drawing is the property of Brockett/Davis/Drake, Inc.
 Any modification or use of this drawing without the express
 written authorization of Brockett/Davis/Drake, Inc. is prohibited.

PAV-CSDWG