

- EROSION CONTROL PLAN NOTES**
- ALL OPERATORS AND/OR CONTRACTORS SHALL CONFORM TO THE TERMS AND CONDITIONS OF THE TEXAS COMMISSION ON ENVIRONMENTAL QUALITY (TCEQ), TPDES GENERAL PERMIT NO. TXR 150000 ISSUED AND DATED MARCH 5, 2003.
 - THE NOTICE OF INTENT (NOI), AS REQUIRED BY THE GENERAL PERMIT, MUST BE PROPERLY DISPLAYED ON SITE AT ALL TIMES BY EACH OPERATOR.
 - ALL RELEASES OF THE REPORTABLE QUANTITIES OF HAZARDOUS SUBSTANCES SHALL BE REPORTED IMMEDIATELY TO THE FACILITY OPERATOR, EPA AND TCEQ.
 - QUALIFIED OPERATOR PERSONNEL MUST INSPECT THE SITE AT LEAST ONCE EVERY 14 DAYS AND WITHIN 24 HOURS OF A STORM EVENT OF 0.5 INCHES OR GREATER. AS AN ALTERNATIVE, AN INSPECTION CAN BE CONDUCTED ONCE EVERY SEVEN (7) CALENDAR DAYS ON A DEFINED DAY. A DECISION ON WHICH METHOD TO USE MUST BE DECIDED BEFORE WORK BEGINS AND MUST BE FOLLOWED THROUGHOUT THE PROJECT.
 - MODIFICATIONS TO THE STORM WATER POLLUTION PREVENTION PLAN SHALL BE IMPLEMENTED AND BE IN-PLACE WITHIN A SEVEN CALENDAR DAY PERIOD.
 - IF ANY CONTRACTOR SEES A VIOLATION BY AN OPERATOR OR ANOTHER CONTRACTOR, THAT OPERATOR OR CONTRACTOR IN VIOLATION SHALL BE NOTIFIED AS WELL AS THE FACILITY OPERATOR.
 - EROSION CONTROL SHALL BE INSTALLED PRIOR TO GRADING.
 - ACCUMULATED SILT DEPOSITS SHALL BE REMOVED FROM SILT FENCES AND HAY BALE DIKES WHEN SILT DEPTH REACHES THREE INCHES OR 25%.
 - THE CONTRACTOR SHALL ADD OR DELETE EROSION PROTECTION AT THE REQUEST AND DIRECTION OF THE OPERATOR OR TOWN.
 - AFTER INSTALLATION OF PAVEMENT, FINAL LOT BENCHING AND GENERAL CLEANUP, THE CONTRACTOR SHALL ESTABLISH GRASS GROUND COVER IN ALL STREET PARKWAYS, LOT AND ALL OTHER DISTURBED AREAS. SODDING SHALL BE DONE AS SPECIFIED BY SECTION 202.5 AND SEEDING AS SPECIFIED BY SECTION 202.6 OF THE OCTOBER 2004 OR LATEST EDITION OF NCTCOG STANDARD SPECIFICATION.
 - IT SHALL BE THE CONTRACTOR'S RESPONSIBILITY TO CONTROL AND LIMIT SILT AND SEDIMENT LEAVING THE SITE. SPECIFICALLY, THE CONTRACTOR SHALL PROTECT ALL PUBLIC STREETS, ALLEYS, STREAMS AND STORM DRAINAGE SYSTEMS FROM EROSION DEPOSITS.
 - A DRAINAGE AREA MAP WILL BE INCLUDED WITH THE EROSION CONTROL PLAN.
 - CONSTRUCTION WASTE DISPOSAL CONTAINERS SHALL BE PROVIDED ON THE SITE FOR DISPOSAL OF ALL NON-HAZARDOUS CONSTRUCTION WASTE MATERIALS. THE CONTAINERS SHALL BE HAULED TO LANDFILL BY THE CONTRACTOR.
 - ALL HAZARDOUS MATERIALS SHALL BE HANDLED AND DISPOSED OF BY THE CONTRACTOR IN ACCORDANCE WITH FEDERAL, STATE AND LOCAL REGULATIONS.

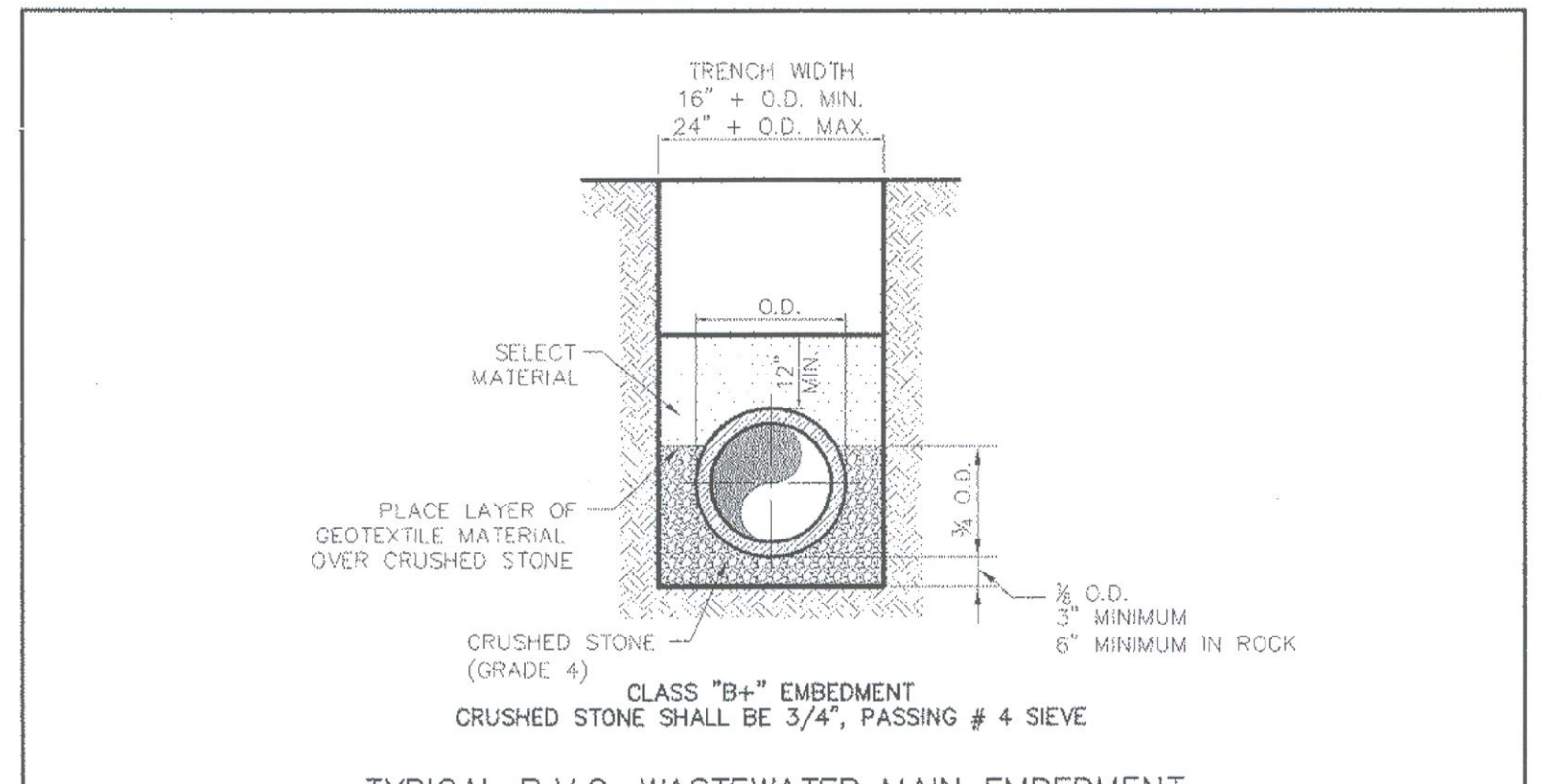
- SILT FENCE NOTES**
- POSTS WHICH SUPPORT THE SILT FENCE SHALL BE INSTALLED ON A SLIGHT ANGLE TOWARD THE ANTICIPATED RUNOFF SOURCE. THE POST MUST BE EMBEDDED A MINIMUM OF 18 INCHES.
 - THE TOE OF THE SILT FENCE SHALL BE TRENCHED IN WITH A SPADE OR MECHANICAL TRENCHER, SO THAT THE DOWNSLOPE FACE OF THE TRENCH IS FLAT AND PERPENDICULAR TO THE LINE OF FLOW. WHERE FENCE CANNOT BE TRENCHED IN (E.G. DRIVEWAYS), HEIGHT FABRIC FLAP WITH WASHED GRAVEL ON THE UPHILL SIDE TO PREVENT FLOW UNDER FENCE.
 - THE TRENCH MUST BE A MINIMUM OF 6 INCHES DEEP AND 6 INCHES WIDE TO ALLOW FOR THE SILT FENCE FABRIC TO BE LAID IN THE GROUND AND BACKFILLED WITH COMPACTED MATERIAL.
 - SILT FENCE SHALL BE SECURELY FASTENED TO EACH SUPPORT POST OR TO WOVEN WIRE, WHICH IS IN TURN ATTACHED TO THE SUPPORT POST. THERE SHALL BE A 6 INCH DOUBLE OVERLAP, SECURELY FASTENED WHERE ENDS OF FABRIC MEET.
 - INSPECTION SHALL BE MADE EVERY TWO WEEKS OR AFTER EACH RAINFALL. REPAIR OR REPLACEMENT SHALL BE PROMPTLY AS NEEDED.
 - SILT FENCE SHALL BE REMOVED WHEN THE SITE IS COMPLETELY STABILIZED SO AS NOT TO BLOCK OR IMPEDE STORM FLOW OR DRAINAGE.
 - ACCUMULATED SILT SHALL BE REMOVED WHEN IT REACHES A DEPTH OF 3 INCHES. THE SILT SHALL BE DISPOSED OF AT AN APPROVED SITE AND IN SUCH A MANNER AS TO NOT CONTRIBUTE TO ADDITIONAL SILTATION.

Addison!
PUBLIC WORKS DEPARTMENT

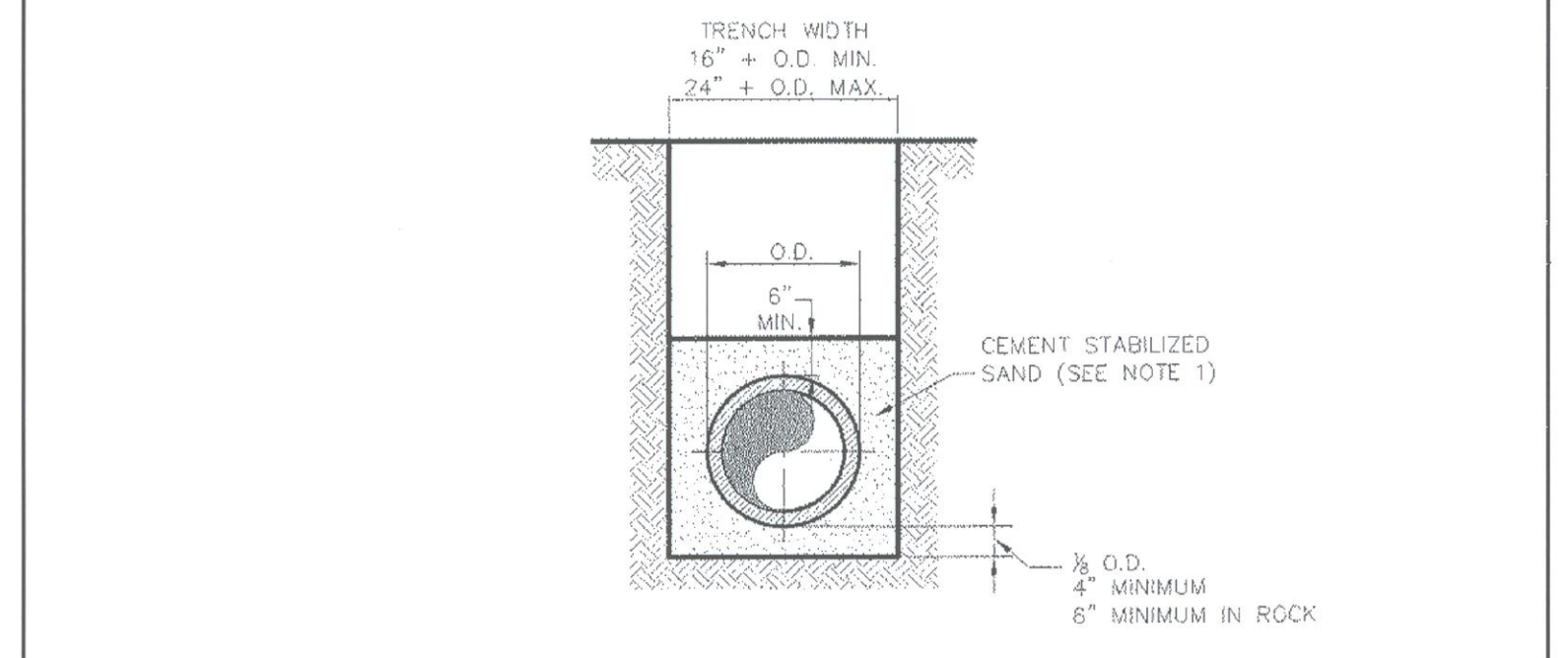
EROSION CONTROL & SILT FENCE NOTES

STANDARD CONSTRUCTION DETAILS
EROSION CONTROL

DATE: AUGUST, 2010 REV DATE: SHEET: SD-EC01



TYPICAL P.V.C. WASTEWATER MAIN EMBEDMENT



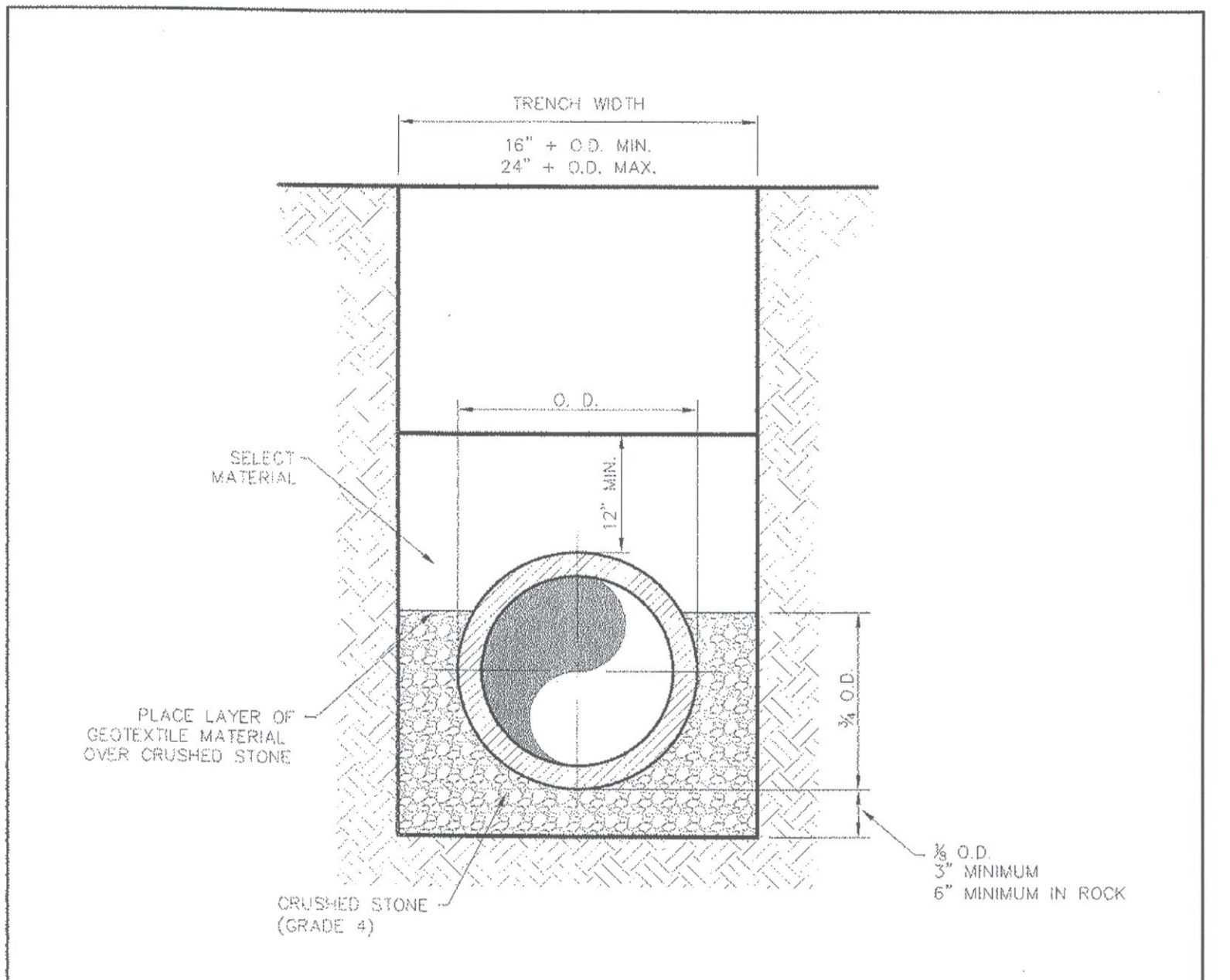
NOTE:
1. CEMENT STABILIZED SAND SHALL HAVE A MINIMUM OF 10% CEMENT PER CUBIC YARD OF CEMENT STABILIZED SAND MIXTURE, BASED ON LOOSE DRY WEIGHT VOLUME (AT LEAST 2.5 BAGS OF CEMENT PER CUBIC YARD OF MIXTURE). THE USE OF BROWN COLORING IN CEMENT STABILIZED SAND IS REQUIRED FOR PRESSURE RATED WASTEWATER MAIN AND LATERAL BEDDING.

Addison!
PUBLIC WORKS DEPARTMENT

P.V.C. WASTEWATER MAIN CEMENT STABILIZED SAND EMBEDMENT

STANDARD CONSTRUCTION DETAILS
WASTEWATER

DATE: AUGUST, 2010 REV DATE: SHEET: SD-WW01



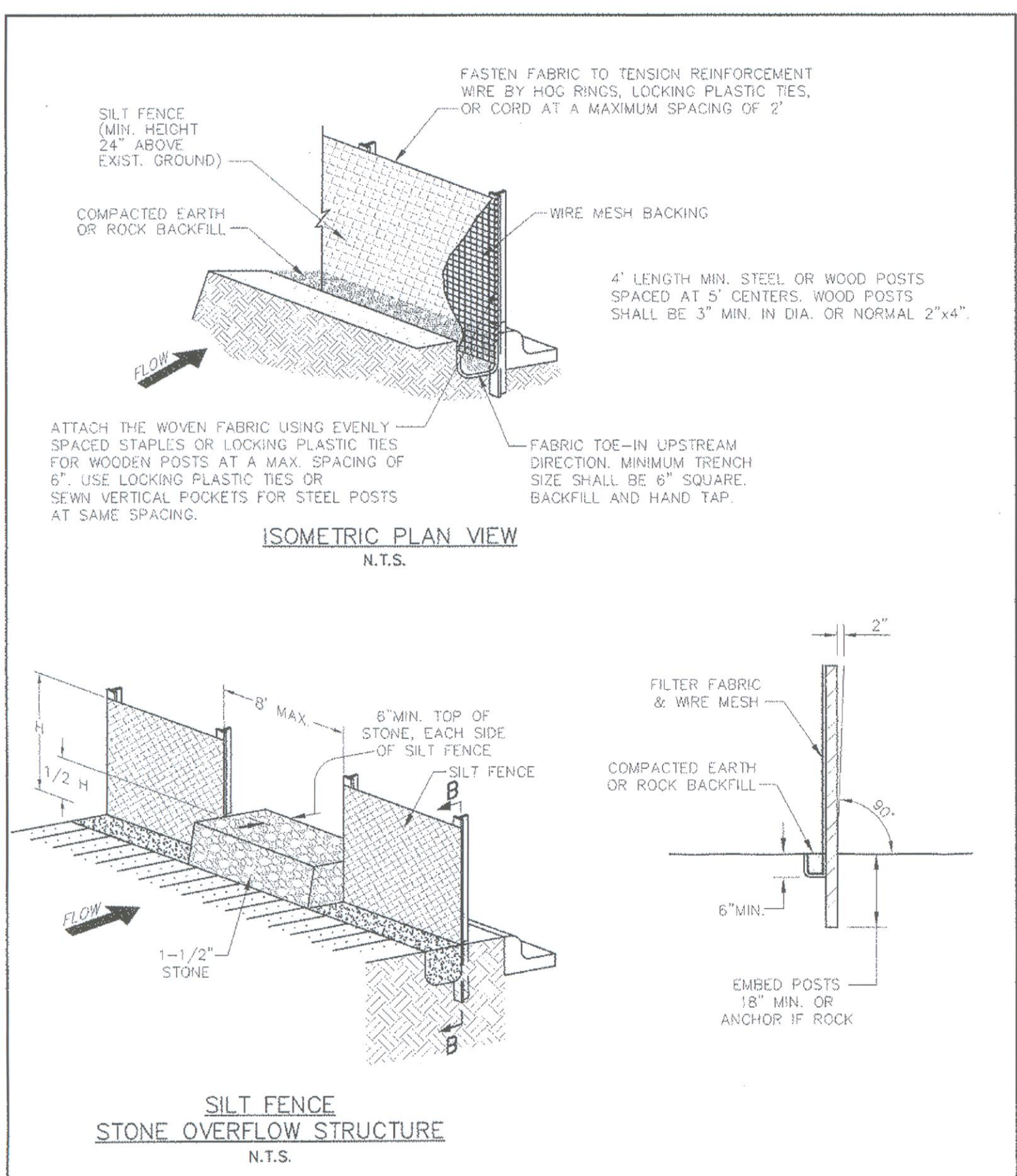
TYPICAL P.V.C. WATER MAIN EMBEDMENT

Addison!
PUBLIC WORKS DEPARTMENT

P.V.C. WATER MAIN EMBEDMENT

STANDARD CONSTRUCTION DETAILS
WATER

DATE: AUGUST, 2010 REV DATE: SHEET: SD-W01

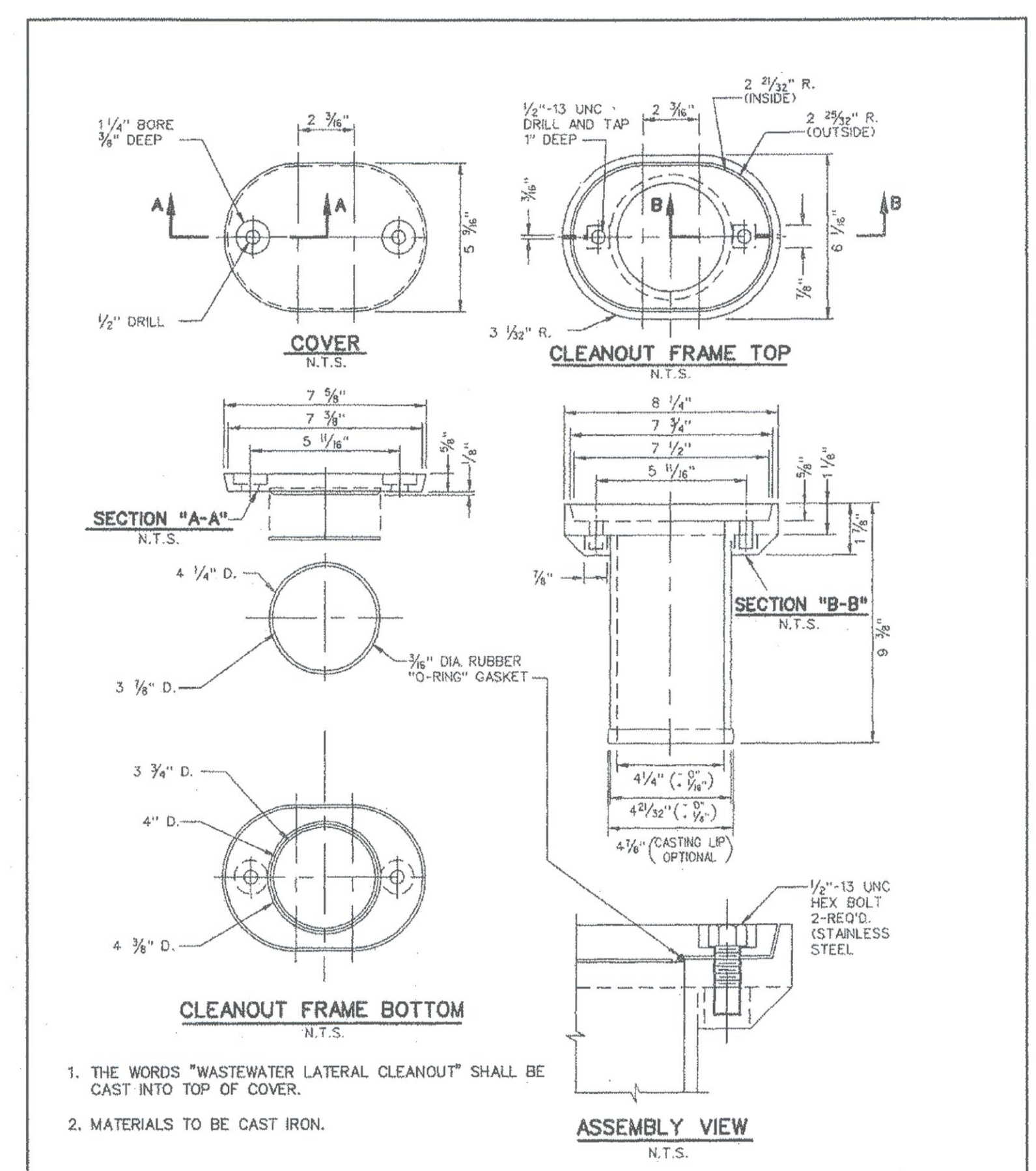


Addison!
PUBLIC WORKS DEPARTMENT

SILT FENCE DETAIL

STANDARD CONSTRUCTION DETAILS
EROSION CONTROL

DATE: AUGUST, 2010 REV DATE: SHEET: SD-EC02

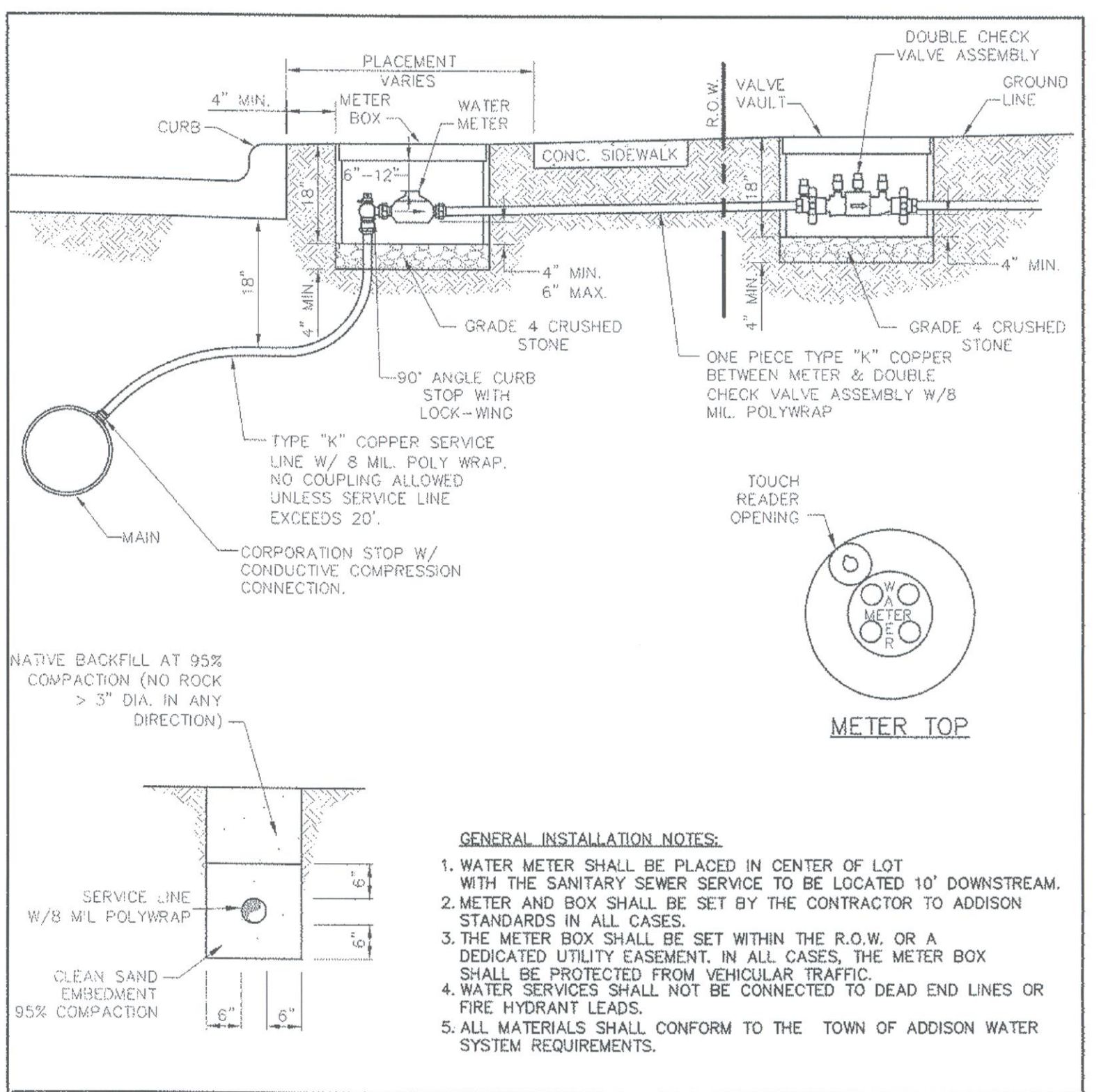


Addison!
PUBLIC WORKS DEPARTMENT

CAST IRON CLEANOUT FRAME & COVER

STANDARD CONSTRUCTION DETAILS
WASTEWATER

DATE: AUGUST, 2010 REV DATE: SHEET: SD-WW03



Addison!
PUBLIC WORKS DEPARTMENT

SERVICE CONNECTION WITH METER BOX

STANDARD CONSTRUCTION DETAILS
WATER

DATE: AUGUST, 2010 REV DATE: SHEET: SD-W00

AS BUILTS
Steve Preston
8.20.14

BURY
5310 Harvest Hill Road, Suite 100
Dallas, Texas 75220
Tel: (972) 951-0011 Fax: (972) 951-0278
TPDES # F-1046 TPLB # F-1070502
Copyright © 2014

STEPHANIE E. LAUGHLIN
95763
LICENSED PROFESSIONAL ENGINEER
S.W.T.E.

CIVIL DETAILS

TGI FRIDAYS
4951 BELTLINE ROAD
ADDISON, TEXAS

DRAWN BY: GS
DESIGNED BY: SEL
REVIEWED BY: MW
PROJECT NO.: 0111663-30001

SHEET
C7
OF 8