



BELT LINE ROAD

DRIVE

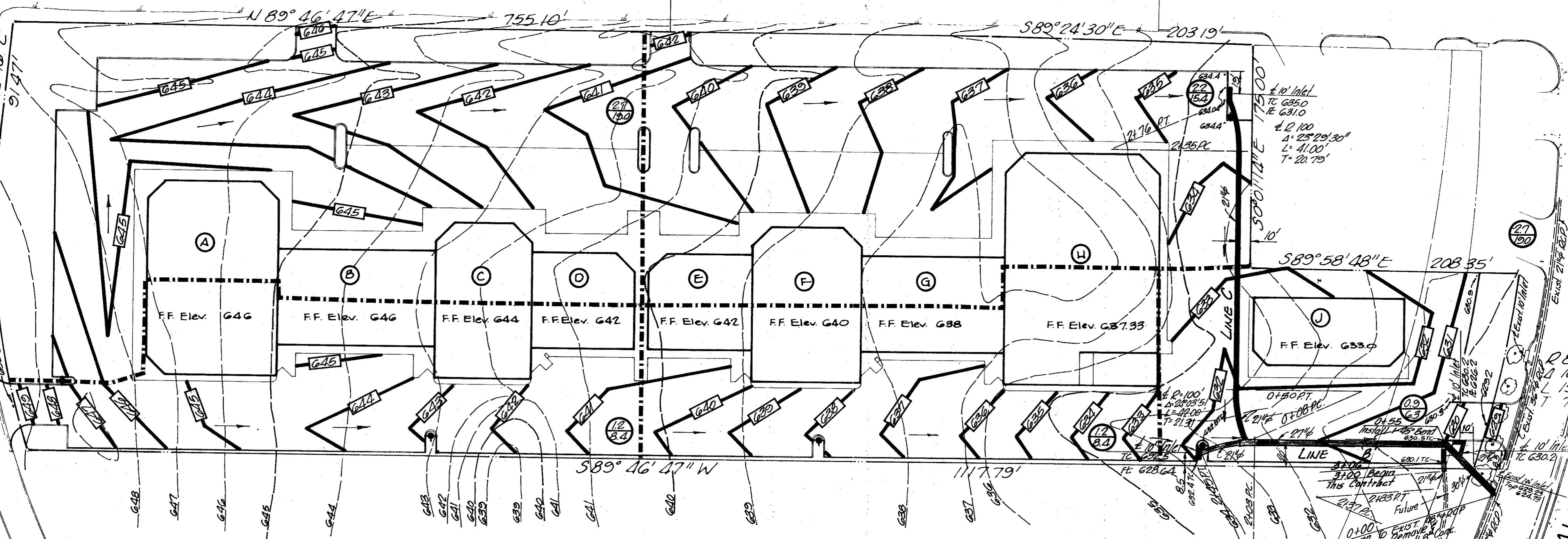
QUORUM

PARKWAY

DALLAS

D 590.88'  
Δ 23°35'26"  
L 243.48'  
T 123.39'

D 894.93'  
Δ 10°00'14"  
L 156.26'  
T 78.33'



**DRAINAGE CALCULATION**

- ⊖ Area
- Q<sub>100</sub>
- 0.9 = C
- 10 min = T
- 7.8 = I<sub>100</sub>
- CIA = Q

BM: 22. Spike in Power Pole,  
East Side of Quorum  
Drive at Belt Line Rd  
Elev 650.60

22. Spike in Power Pole,  
South Side of Belt Line Rd,  
705' East of Quorum Dr.  
Elev 640.06

Southwest Corner Concrete  
Slip of Mobil Service  
Station  
Elev 638.56

20' Drainage  
Easmt

± 2.882.93  
Δ 17°10'  
L 180.00  
T 34.84

± 2.100  
Δ 27°20'  
L 48.00  
T 24.41'

Remove Exst. Plug  
From Exst. 60" RCP

NO.	REVISION	BY	DATE
	Alignment of Storm Sewer	JV	1-1989

DESIGNED BY J.V.  
 DRAWN BY J.V.  
 CHECKED BY \_\_\_\_\_  
 SCALE: 1" = 50'  
 DATE: November 8, 1979



**eh** ESPEY, HUSTON & ASSOCIATES, INC.  
 Engineering & Environmental Consultants  
 7616 LBJ FRWY., Suite 425, DALLAS, TX 75251  
 (214) 387-9729

**GRADING & DRAINAGE PLAN**

**PLAZA AT THE QUORUM**  
 ADDISON, TEXAS

SHEET NO. <b>2</b>
OF <b>3</b> SHEETS
FILE NO.