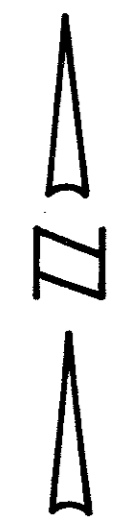
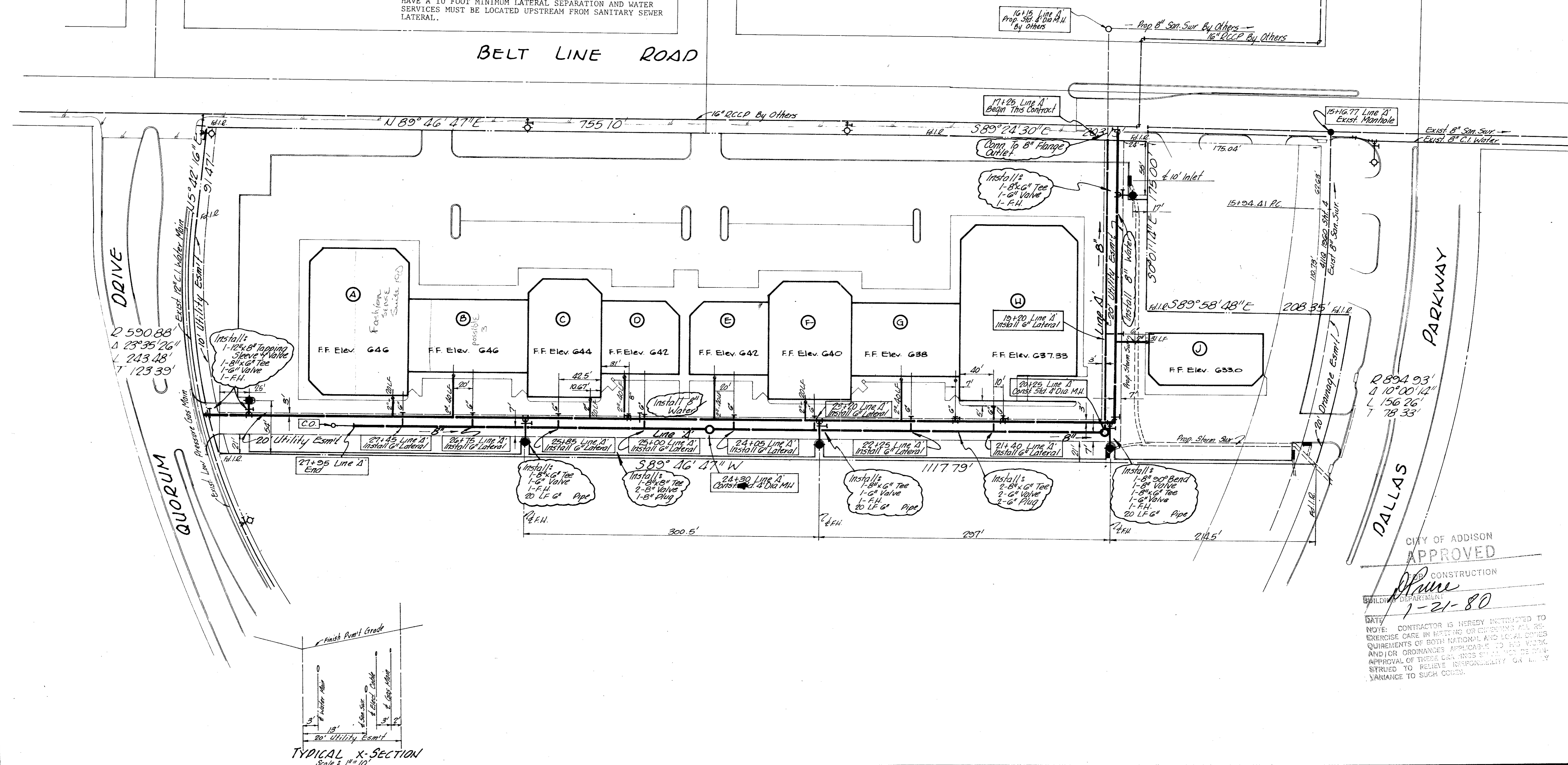


GENERAL SPECIFICATIONS FOR WATER AND SANITARY SEWER IMPROVEMENTS

- UNLESS OTHERWISE NOTED, ALL MATERIAL AND CONSTRUCTION SHALL CONFORM TO THE STANDARD SPECIFICATIONS OF THE CITY OF ADDISON. IN THE EVENT AN ITEM IS NOT COVERED IN THE CITY OF ADDISON SPECIFICATIONS, THE CITY ENGINEER'S DECISION SHALL APPLY.
- ALL WATER LINES MUST BE S.D.R. 18 P.V.C.
- ALL CAST IRON FITTINGS SHALL BE OF THE MECHANICAL JOINT TYPE OR SLIP JOINT AND SHALL BE CLASS D, OR CLASS 250 ON SIZES 12" AND SMALLER IN ACCORDANCE WITH A.W.W.A SPECIFICATION C-110-64 AND C-111-64.
- ALL WATER MAINS 8" IN SIZE SHALL HAVE A MINIMUM COVER OF 42" OR SUFFICIENT COVER TO CLEAR OTHER UTILITIES.
- FIRE HYDRANTS SHALL BE PLACED 2 FEET FROM BACK OF CURB LOCATED AS SHOWN ON PLANS.
- FIRE HYDRANTS SHALL BE MUELLER "CENTURION HYDRANTS"
- GATE VALVES SHALL BE MUELLER OR CLOW BRAND.
- ALL WATER AND SANITARY SEWER MAINS AND SERVICES SHALL HAVE A 10 FOOT MINIMUM LATERAL SEPARATION AND WATER SERVICES MUST BE LOCATED UPSTREAM FROM SANITARY SEWER LATERAL.
- ALL SANITARY SEWER LATERALS SHALL INCLUDE 4" P.V.C. WYE, BEND, PIPE AND STOPPER INSTALLED TWO (2) FEET BEYOND THE UTILITY EASEMENT LINE, EXCEPT AS SHOWN ON PLAN.
- ALL WATER SERVICES SHALL BE INSTALLED TWO (2) FEET BEYOND THE UTILITY EASEMENT LINE, EXCEPT AS SHOWN ON PLAN.
- TRACER WIRE MUST BE NO.12 COPPER, PLASTIC COATED.
- FIRE HYDRANTS SHALL BE COLOR CODED TO CONFORM WITH STATE INSURANCE BOARD COLOR-CODING. (BONNET & OPERATING NUT ONLY) COLORS ARE AS FOLLOWS:
6" - SILVER
8" - BLUE
10" OR LARGER - YELLOW
- ALL SANITARY SEWER SHALL BE S.D.R. 35 P.V.C. UNLESS OTHERWISE SPECIFIED.
- SANITARY SEWER MANHOLES MUST BE CONCRETE POURED IN PLACE.
- TAPPING SLEEVE AND VALVE SHALL BE MUELLER OR CLOW BRAND.



BELT LINE ROAD



CITY OF ADDISON
APPROVED
CONSTRUCTION
DATE: 1-21-80

NOTE: CONTRACTOR IS HEREBY INSTRUCTED TO EXERCISE CARE IN PERTAINING OR CONSIDER ALL REQUIREMENTS OF BOTH NATIONAL AND LOCAL CODES AND/OR ORDINANCES APPLICABLE TO HIS WORK. APPROVAL OF THESE DRAWINGS SHALL NOT BE DEEMED TO RELIEVE RESPONSIBILITY OR LIABILITY VARIANCE TO SUCH CODES.

NO.	REVISION	BY	DATE
1	Alignment of Sanitary Sewer	JV	1-19-80
2	Water Services	MD	1-15-80
3	Revised Water & Sanitary Sewer Service to Bldg H	JV	1-16-80
4	Revised Water Service Location on Bldgs B & E	JV	1-17-80

DESIGNED BY J.V.
DRAWN BY J.V.
CHECKED BY
SCALE: 1" = 50'
DATE: November 8, 1979

ESPEY, HUSTON & ASSOCIATES, INC.
Engineering & Environmental Consultants
7616 LBJ FRWY., Suite 425, DALLAS, TX 75251
(214) 387-9729

WATER & SANITARY SEWER PLAN
PLAZA AT THE QUORUM
ADDISON, TEXAS

SHEET NO. 1
OF 3 SHEETS
FILE NO.