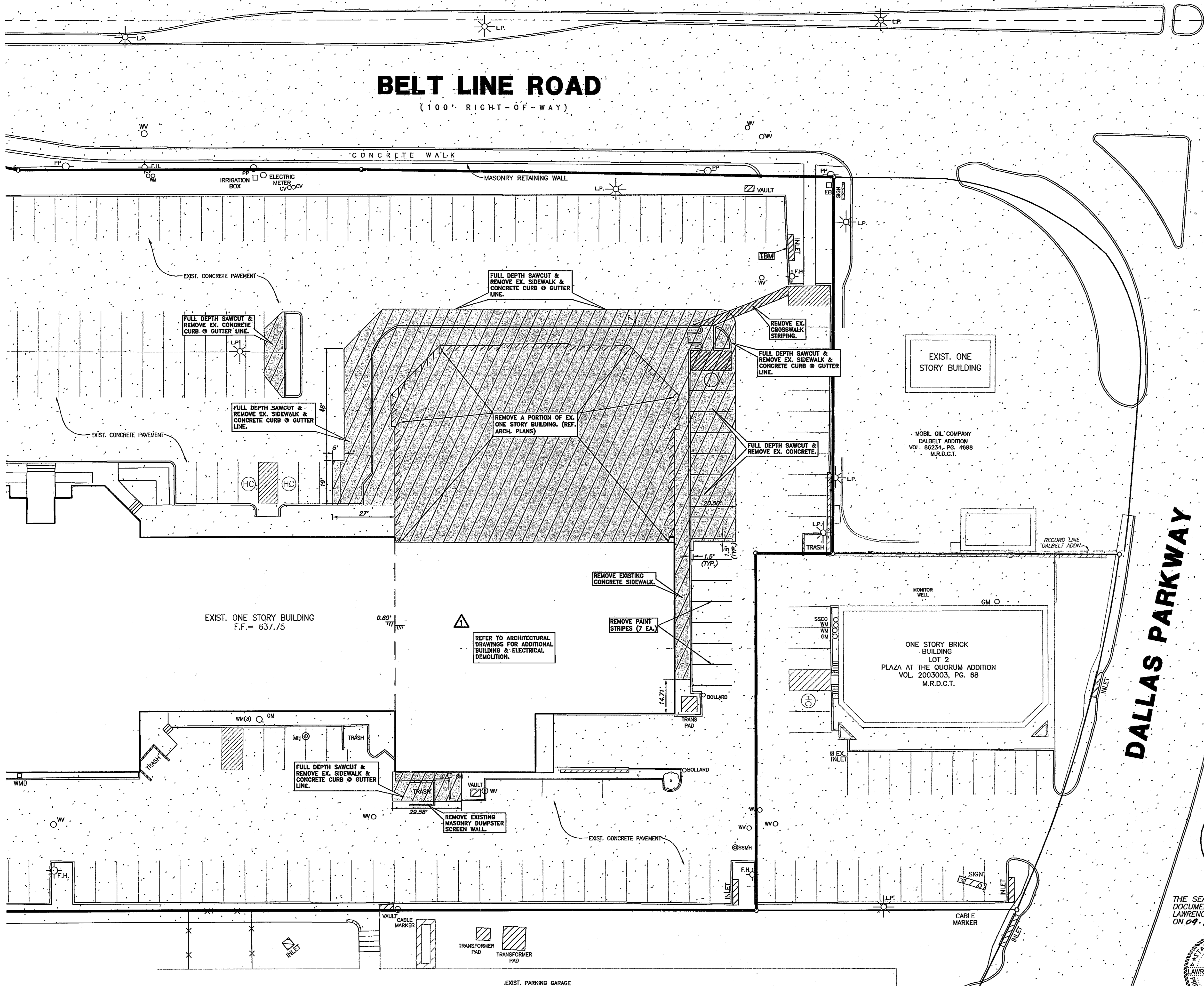
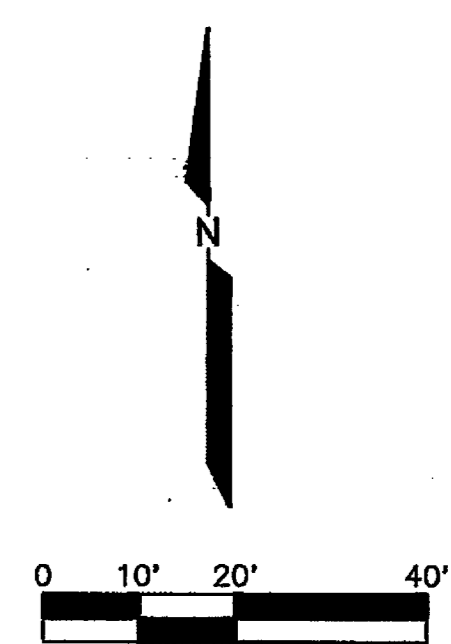
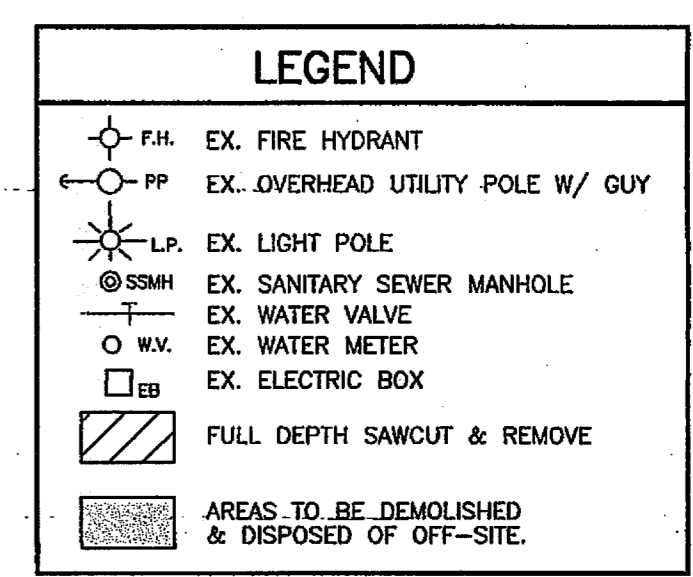


BELT LINE ROAD

(100' RIGHT-OF-WAY)

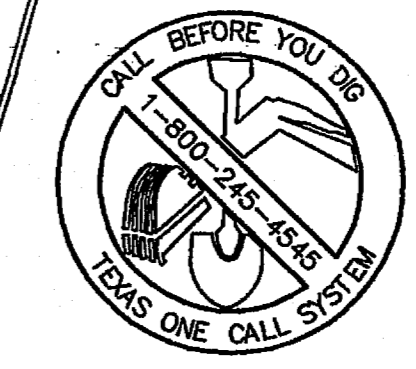


- ### DEMOLITION NOTES
- CONTRACTOR SHALL ARRANGE AND PAY FOR DISCONNECTING, REMOVING, AND PLUGGING UTILITY SERVICES. CONTRACTOR TO NOTIFY AFFECTED UTILITY COMPANIES AND OBTAIN APPROVAL BEFORE STARTING WORK.
 - CONTRACTOR TO REMOVE VEGETATION, IMPROVEMENTS, OR OBSTRUCTIONS INTERFERING WITH INSTALLATION OF NEW CONSTRUCTION.
 - DO NOT INTERRUPT EXISTING UTILITIES SERVING FACILITIES OCCUPIED OR IN USE. CONTRACTOR TO ENSURE TEMPORARY UTILITY SERVICES ARE OPERATIONAL BEFORE INTERRUPTION OF EXISTING SERVICES.
 - PRIOR TO ANY CONSTRUCTION, THE CONTRACTOR SHALL BE FAMILIAR WITH CONTRACT DOCUMENTS, SPECIFICATIONS, CONSTRUCTION PLANS, ALL NOTES, THE CITY OF ADDISON STANDARDS, AND ANY OTHER SPECIFICATIONS APPLICABLE TO THE PROPER COMPLETION OF THIS PROJECT.
 - THE CONTRACTOR SHALL HAVE IN HIS POSSESSION, PRIOR TO ANY DEMOLITION OR CONSTRUCTION, ALL NECESSARY PERMITS AND LICENSES. CONTRACTOR SHALL HAVE AT LEAST ONE SET OF APPROVED ENGINEERING PLANS AND SPECIFICATIONS AND CITY OF ADDISON STANDARD DETAILS ON SITE AT ALL TIMES.
 - ALL WORK SHALL CONFORM TO THE TOWN OF ADDISON SPECIFICATIONS, STANDARDS, AND DETAILS.
 - CONTRACTOR SHALL BE RESPONSIBLE FOR FIELD LOCATING EXISTING UTILITIES AND IMPROVEMENTS PRIOR TO CONSTRUCTION.
 - BARRICADING, TRAFFIC CONTROL, AND PROJECT SIGNS SHALL CONFORM TO "1980 TEXAS MANUAL OF UNIFORM TRAFFIC CONTROL DEVICES", AS CORRECTLY AMENDED, AND THE CITY OF ADDISON STANDARDS.
 - ALL DEMOLITION AND EXCAVATED MATERIALS SHALL BE LEGALLY DISPOSED OF OFF SITE BY THE CONTRACTOR.
 - CONTRACTOR TO COORDINATE W/ALL FRANCHISE & TOWN UTILITY COMPANIES PRIOR TO REMOVAL OF ANY EXISTING FACILITIES.
 - ALL PAVEMENT REMOVAL ADJACENT TO EX. PAVEMENT TO BE REMOVED BY FULL DEPTH SAWCUT.

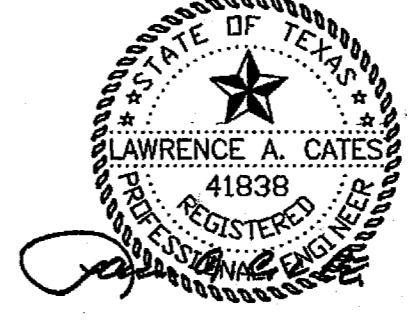


PROJECT NOTE:
REMOVAL OF CONCRETE PAVEMENT TO INCLUDE STORM DRAINAGE WORK SHALL NOT COMMENCE PRIOR TO JANUARY 10, 2011

BENCH MARK NOTE:
SITE BENCH MARK: STORM SEWER INLET RIM LOCATED AT THE NORTHEAST CORNER OF SUBJECT PROPERTY. ELEVATION = 634.4'



THE SEAL APPEARING ON THIS DOCUMENT WAS AUTHORIZED BY LAWRENCE A. CATES, P.E. 41838 ON 09-03-10



DEMOLITION PLAN						
ADDISON WALK						
LOT 1 - PLAZA AT THE QUORUM						
THE TOWN OF ADDISON, TEXAS						
LCA		Lawrence A. Cates & Associates, LLP		14800 Quorum Drive, Suite 200		Dallas, Texas 75254
CA		Consulting Engineers * Dallas		Office: 972-385-2272, Fax: 972-980-1627		TBPE F-5751
DESIGN	DRAWN	DATE	SCALE	NOTES	FILE	NO.
LCA	CAC/HDS	9.03.10	1"=20'	D.P.	010-001 DEMO	C-2.0

R:\DWG\010-001\010-001_DEMO PLAN.dwg, Layout1, 9/22/10 2:01:13 PM, cshs