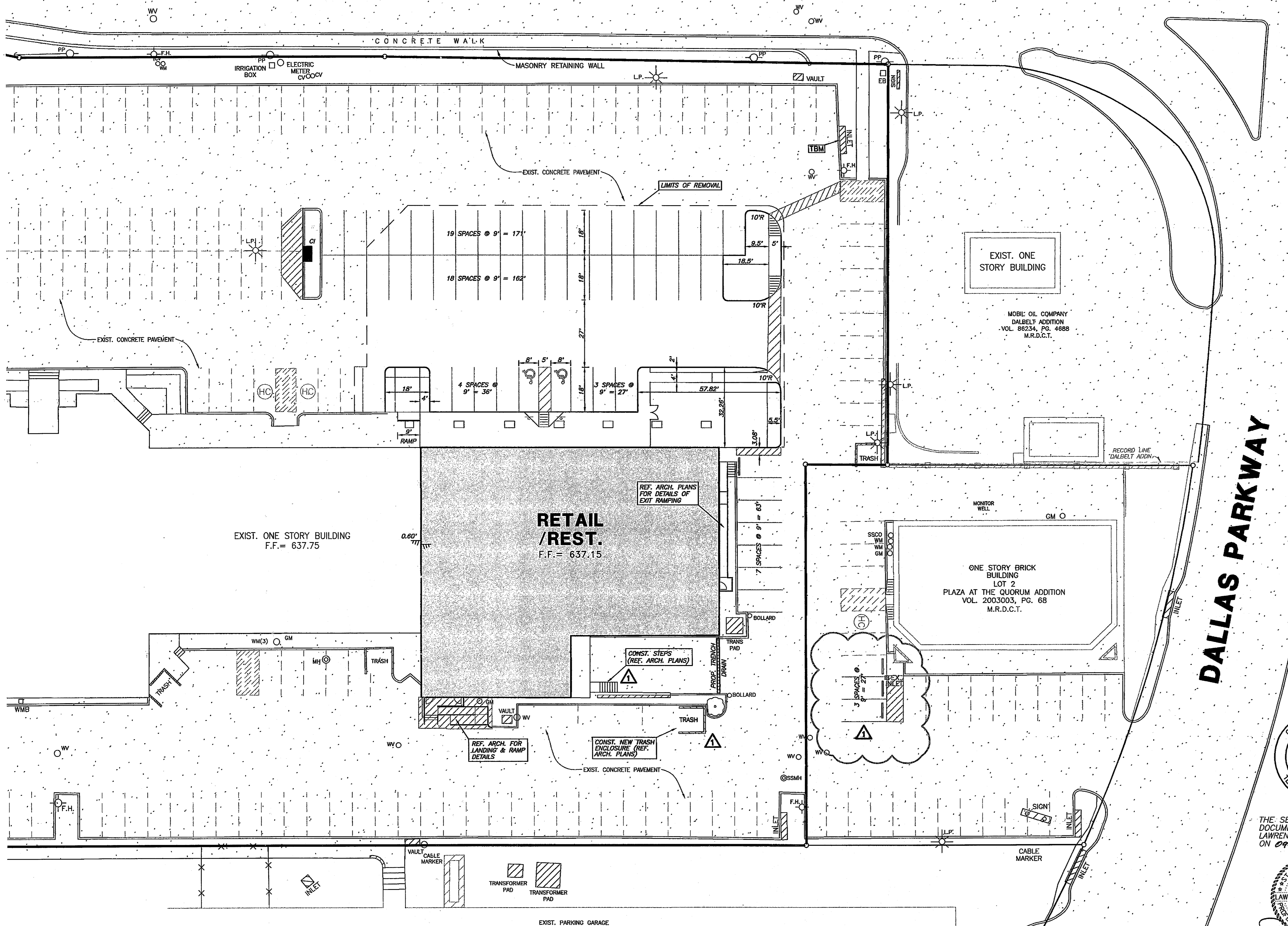
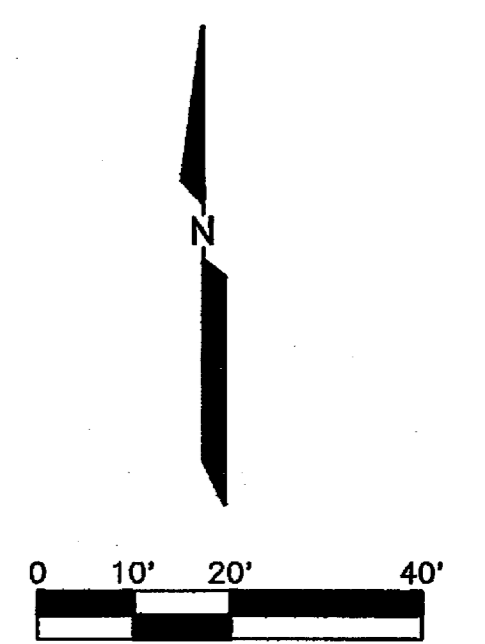


BELT LINE ROAD
(100' RIGHT-OF-WAY)

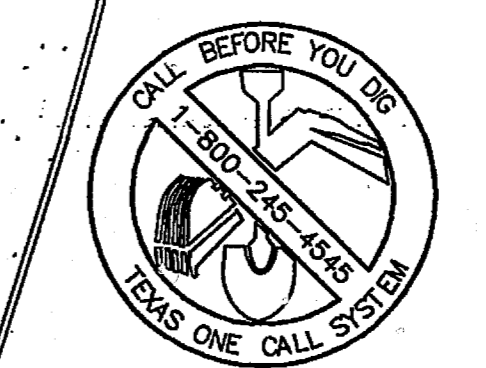


LEGEND

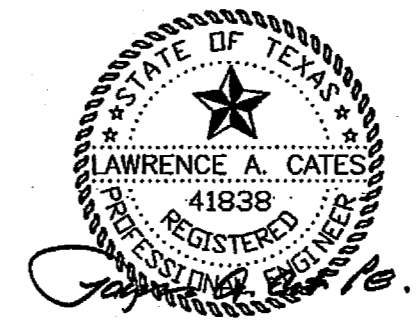
⊖	EXIST. OVERHEAD UTILITY POLE W/ GUY
⊖	EXIST. UNDERGROUND ELEC. OR TELE.
INLET	EXIST. STORM DRAINAGE INLET
TRANS. PAD	EXIST. ELECTRICAL TRANSFORMER PAD
UG	EXIST. UNDERGROUND ELECTRIC
UGT	EXIST. UNDERGROUND TELEPHONE/CABLE
⊙	EXIST. LIGHT POLE
⊙	PROP. LIGHT POLE
---	EXIST. SANITARY SEWER (S.S.)
---	PROP. SANITARY SEWER (S.S.)
EX.SSMH	EXIST. S.S. MH.
⊙	PROP. S.S. MH.
---	EXIST. WATER (WTR.)
---	PROP. WATER (WTR.)
⊙	WATER METER (W.M.)
⊙	GATE VALVE
F.H.	EXIST. FIRE HYDRANT
F.H.	PROP. FIRE HYDRANT
---	EXIST. STORM SEWER
---	PROP. STORM SEWER
W.E.	WATER EASEMENT
S.S.E.	SANITARY SEWER EASEMENT
D.E.	DRAINAGE EASEMENT
U.E.	UTILITY EASEMENT

PROJECT NOTE:
REMOVAL OF CONCRETE PAVEMENT TO INCLUDE STORM DRAINAGE WORK SHALL NOT COMMENCE PRIOR TO JANUARY 10, 2011

BENCH MARK NOTE:
SITE BENCH MARK: STORM SEWER INLET RIM LOCATED AT THE NORTHEAST CORNER OF SUBJECT PROPERTY. ELEVATION = 634.44'



THE SEAL APPEARING ON THIS DOCUMENT WAS AUTHORIZED BY LAWRENCE A. CATES, P.E. 41838 ON 09.03.10



09.03.10 ADDED DUMPSTER, PARKING TO LOT 2 AND STEPS IN DOCK AREA.	
1	DATE: 09.03.10
DIMENSION CONTROL PLAN	
ADDISON WALK	
LOT 1 - PLAZA AT THE QUORUM	
THE TOWN OF ADDISON, TEXAS	
LCA Lawrence A. Cates & Associates, LLP Consulting Engineers ★ Dallas	
DESIGN	LCA
DRAWN	CAC/HDS
DATE	9.03.10
SCALE	1"=20'
NOTES	D.P.
FILE	010-001 DIMCTRL
NO.	C-3.0

R:\DWG\010-001\010-001_DIMENSION CONTROL PLAN.dwg Layout1 9/3/2010 2:27:45 PM .chp