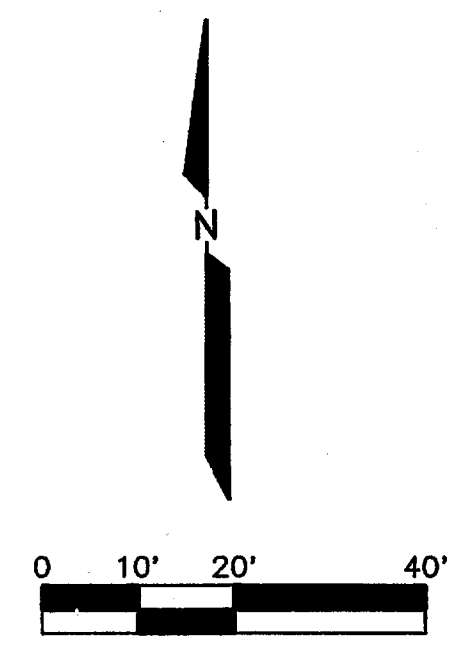


ADDISON WALK

LA Laredo

# BELT LINE ROAD

(100' RIGHT-OF-WAY)



- ### DRAINAGE NOTES
- ALL WORK, UNLESS OTHERWISE NOTED, SHALL CONFORM TO THE TOWN OF ADDISON STANDARD SPECIFICATIONS.
  - THE HORIZONTAL AND VERTICAL LOCATIONS OF EXISTING SUBSURFACE UTILITIES HAVE BEEN DETERMINED FROM DATA RECORDED BY OTHERS. CONTRACTOR SHALL VERIFY THAT NECESSARY CROSSING CLEARANCES BETWEEN EXISTING AND PROPOSED UTILITIES EXIST PRIOR TO CONSTRUCTION OF ANY SUCH CROSSING.
  - CONTRACTOR SHALL COORDINATE WITH THE OWNER, ENGINEER OR HIS REPRESENTATIVE AND CITY REPRESENTATIVE REGARDING ANY DEVIATIONS FROM THESE PLANS.
  - CONTRACTOR SHALL MAINTAIN ONE SET OF RECORD DRAWINGS (AS BUILT) ON SITE WHICH WILL BE SUBMITTED TO THE ENGINEER UPON COMPLETION OF THIS PROJECT.
  - IT WILL BE THE RESPONSIBILITY OF THE CONTRACTOR TO PROTECT ALL PUBLIC UTILITIES IN THE CONSTRUCTION OF THIS PROJECT; ALL MANHOLES, CLEANOUTS, VALVE BOXES, FIRE HYDRANTS, SEWER LATERALS, WATER SERVICE, ETC.
  - THE CONTRACTOR SHALL SET UTILITIES TO PROPER LINE AND GRADE PRIOR TO THE PLACING OF PERMANENT PAVEMENT.
  - ALL STORM SEWER PIPE SHALL CONFORM TO CITY SPECIFICATIONS AND SHALL BE MANUFACTURED FROM ONE OF THE FOLLOWING MATERIALS:
    - CLASS III RCP Diameter 18"-48"
    - UNLESS OTHERWISE NOTED
    - Polyvinyl Chloride (PVC) Diameter 6"-16"
    - ASTM D 3034 SDR 35
  - ANY PIPE LOCATED WITHIN THE RIGHT-OF-WAY OR IN AN EASEMENT SHALL BE AN RCP PIPE.
  - CURB INLETS / ID GRATE INLETS ARE TO BE PRECAST STRUCTURES MANUFACTURED BY OLDCASTLE PRECAST (817-453-1054) OR APPROVED EQUIVALENT.

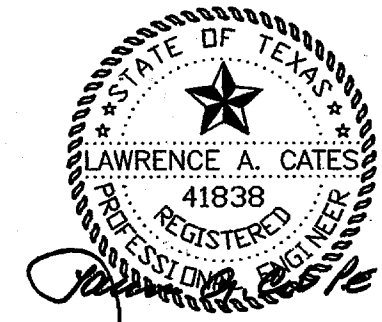
- ### LEGEND
- PP EXIST. OVERHEAD UTILITY POLE W/ GUY
  - UE EXIST. UNDERGROUND ELEC. OR TELE.
  - INLET EXIST. STORM DRAINAGE INLET
  - TRANS. PAD EXIST. ELECTRICAL TRANSFORMER PAD
  - UGE EXIST. UNDERGROUND ELECTRIC
  - UGT EXIST. UNDERGROUND TELEPHONE/CABLE
  - LP EXIST. LIGHT POLE
  - PROP. LIGHT POLE
  - SS EXIST. SANITARY SEWER (S.S.)
  - PROP. SANITARY SEWER (S.S.)
  - EX. SSMH EXIST. S.S. MH
  - PROP. S.S. MH
  - EX. WATER (WTR.) EXIST. WATER (WTR.)
  - PROP. WATER (WTR.)
  - W.M. WATER METER (W.M.)
  - GATE VALVE
  - FH EXIST. FIRE HYDRANT
  - PROP. FIRE HYDRANT
  - EX. STORM SEWER EXIST. STORM SEWER
  - PROP. STORM SEWER
  - W.E. WATER EASEMENT
  - S.S.E. SANITARY SEWER EASEMENT
  - D.E. DRAINAGE EASEMENT
  - U.E. UTILITY EASEMENT

**PROJECT NOTE:**  
REMOVAL OF CONCRETE PAVEMENT TO INCLUDE STORM DRAINAGE WORK SHALL NOT COMMENCE PRIOR TO JANUARY 10, 2011

**BENCH MARK NOTE:**  
SITE BENCH MARK: STORM SEWER INLET RIM LOCATED AT THE NORTHEAST CORNER OF SUBJECT PROPERTY. ELEVATION = 634.44'

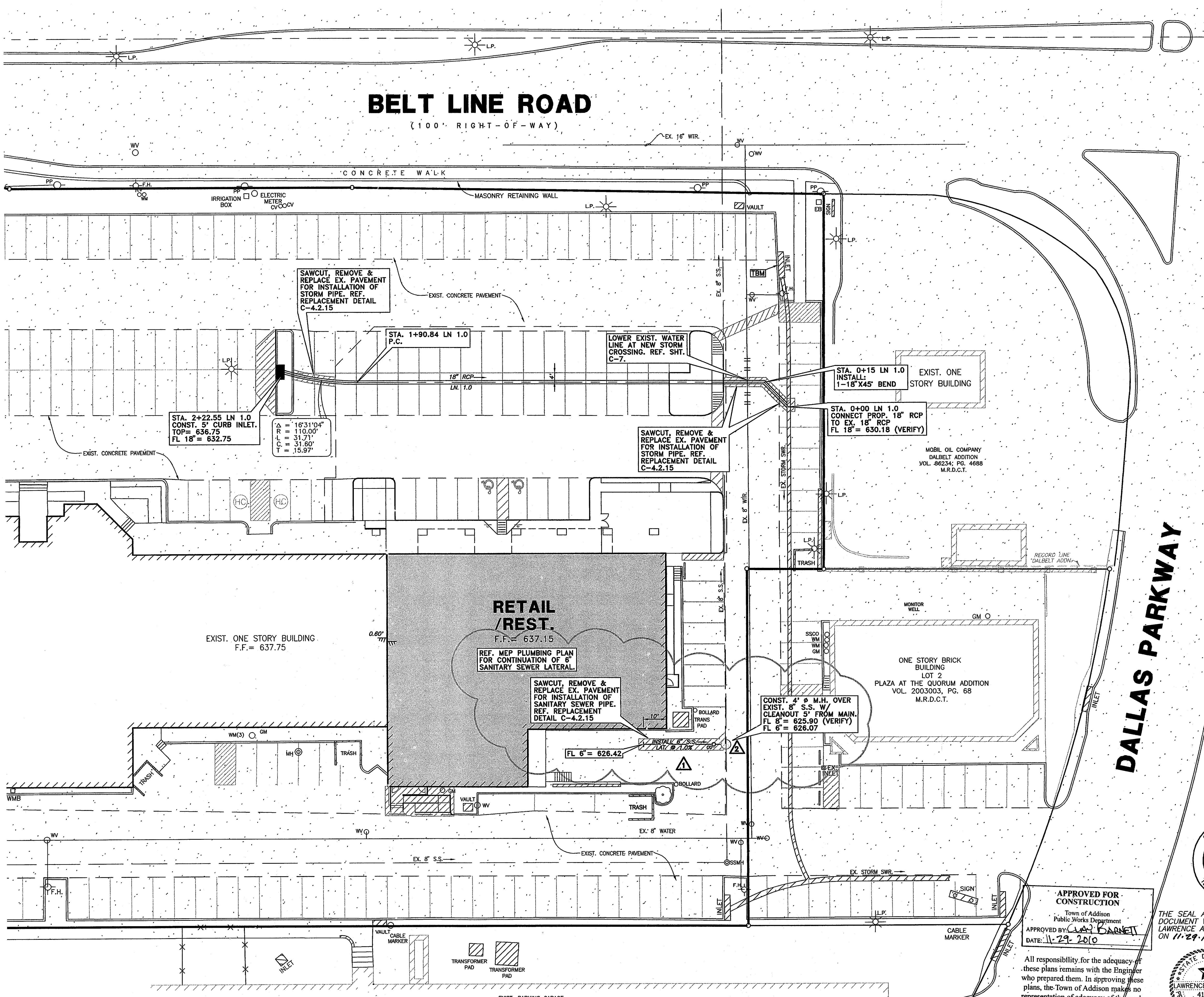


THE SEAL APPEARING ON THIS DOCUMENT WAS AUTHORIZED BY LAWRENCE A. CATES, P.E. 41838 ON 11-29-10



**APPROVED FOR CONSTRUCTION**  
Town of Addison  
Public Works Department  
APPROVED BY: *LAURENCE A. CATES*  
DATE: 11-29-2010

All responsibility for the adequacy of these plans remains with the Engineer who prepared them. In approving these plans, the Town of Addison makes no representation of adequacy of the work of the Design Engineer.



DRAINAGE & SANITARY SEWER PLAN						
ADDISON WALK						
LOT 1 - PLAZA AT THE QUORUM						
THE TOWN OF ADDISON, TEXAS						
L. Lawrence A. Cates & Associates, LLP		14801 Quorum Drive, Suite 200		Dallas, Texas 75244		Office: 972-385-2273 Fax: 972-385-1627
CA Consulting Engineers * Dallas		TBP# E-3751				
DESIGN	DRAWN	DATE	SCALE	NOTES	FILE	NO.
LCA	CAC/HDS	9.9.10	1"=20'	D.P.	010-001 DRAIN	C-6.1

R:\DWG\03\10\001\DWG\03\10\001\_DRAINAGE PLAN.dwg, Layout1, 11/29/2010 9:12:26 AM, chris