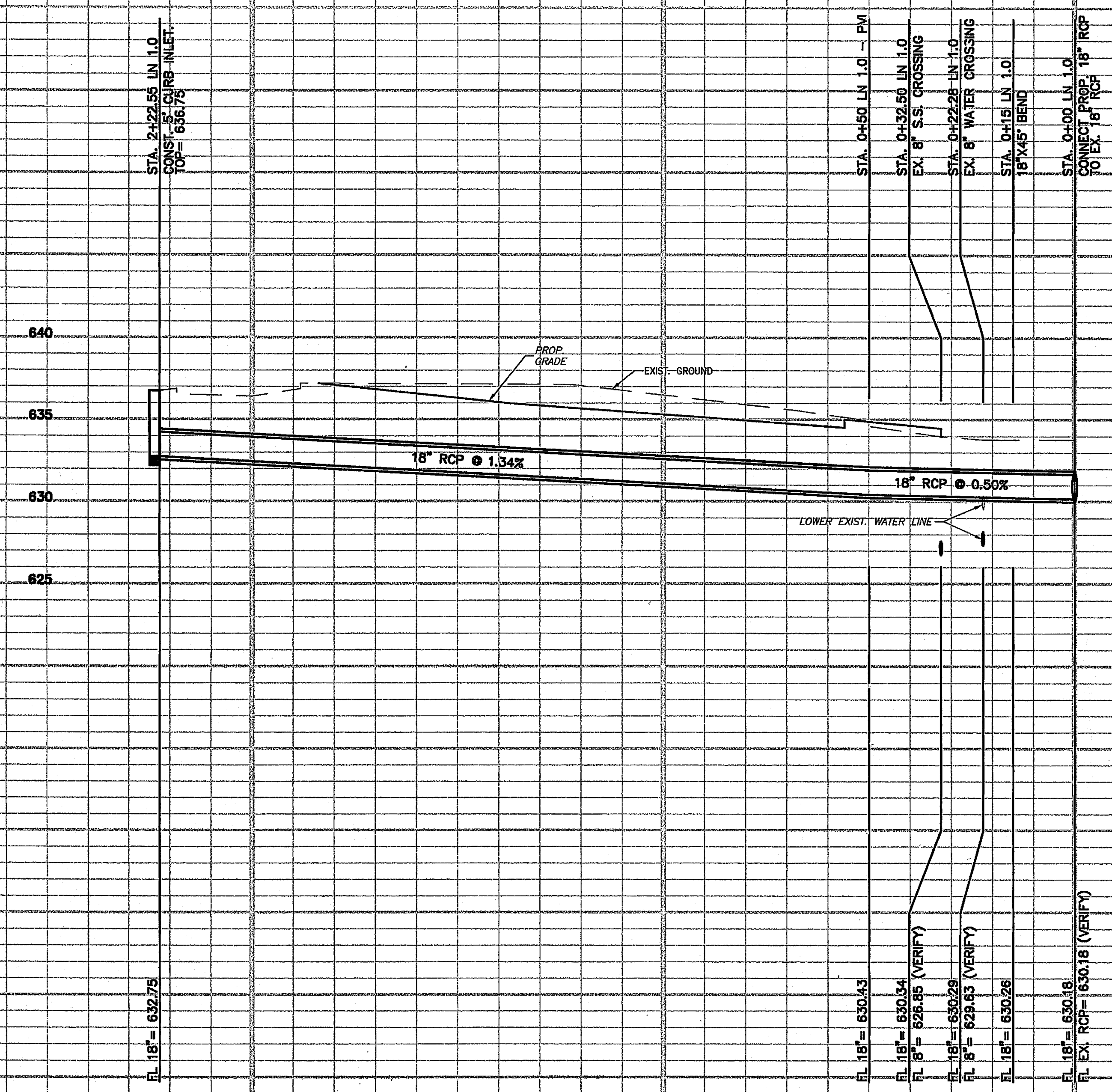


WATER LINE LOWERING DETAIL



S.D. LINE 1.0

EX. 8" WATER CROSSING STA. 0+22.28 LN 1.0

FL 18" = 630.29  
EX. FL 8" = 630.43 (VERIFY)  
NEW FL 8" = 627.43

STA. 2+22.55 LN 1.0  
EXIST. 8" RCP INLET  
E.C. = 636.73

FL 18" = 632.75

STA. 0+50 LN 1.0 - PM

STA. 0+32.56 LN 1.0  
EX. 8" S.S. CROSSING

STA. 0+22.28 LN 1.0  
EX. 8" WATER CROSSING

STA. 0+15 LN 1.0  
18"X45° BEND

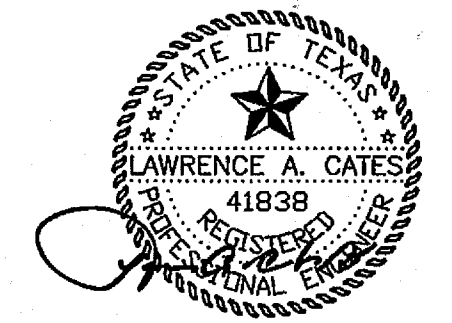
STA. 0+00 LN 1.0  
CONNECT PROP. 18" RCP TO EX. 8" RCP

FL 18" = 630.43  
FL 18" = 630.34  
FL 8" = 628.85 (VERIFY)  
FL 18" = 630.28  
FL 8" = 629.63 (VERIFY)  
FL 18" = 630.26

FL 18" = 630.18  
FL EX. RCP = 630.18 (VERIFY)

2+00 1+00 0+00

THE SEAL APPEARING ON THIS DOCUMENT WAS AUTHORIZED BY LAWRENCE A. CATES, P.E. 41838 ON 09-03-10



REV.	DATE	REMARKS
<b>STORM SEWER - LN. SD-1</b>		
ADDISON WALK		
LOT 1 - PLAZA AT THE QUORUM		
THE TOWN OF ADDISON, TEXAS		
LCA Lawrence A. Cates & Associates, LLP Consulting Engineers * Dallas		
DESIGN	DRAWN	DATE
LCA	CAC/HDS	09.03.10
SCALE	NOTES	FILE
1"=20' 1"=30'	D.P.	010-001 PROFILES
NO.	C-7.0	