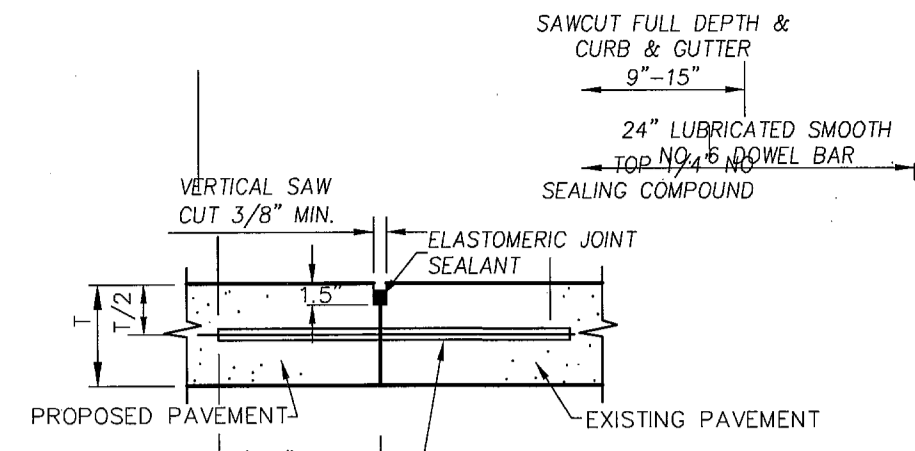


**EXPANSION JOINT**  
N.T.S.

NOTE:  
DOWELS AND REINFORCING BARS SHALL BE SUPPORTED BY AN APPROVED DEVICE. LOCATED AS INDICATED OR AS NEEDED. JOINTS TO BE ON MAXIMUM OF 75' SPACING AND LOCATED AT POINTS OF INFLECTION AND MINIMUM CONCRETE WIDTH WHERE POSSIBLE.

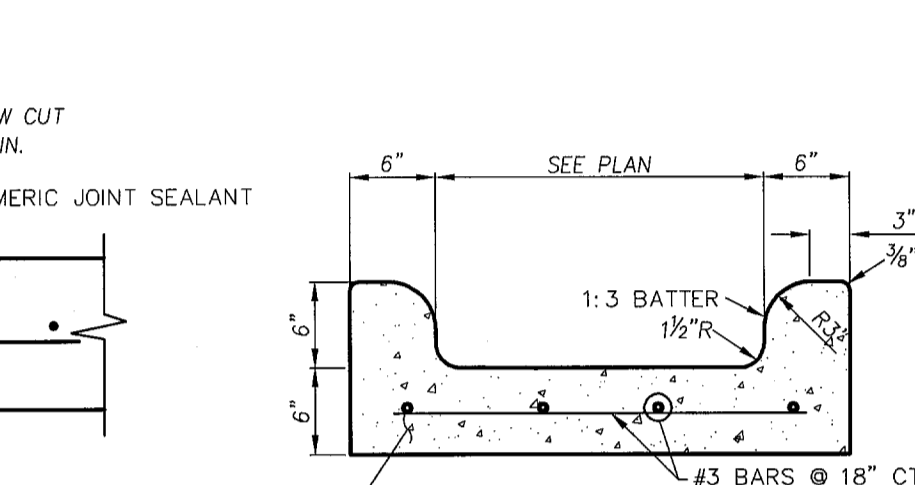
T=THICKNESS OF PAVEMENT



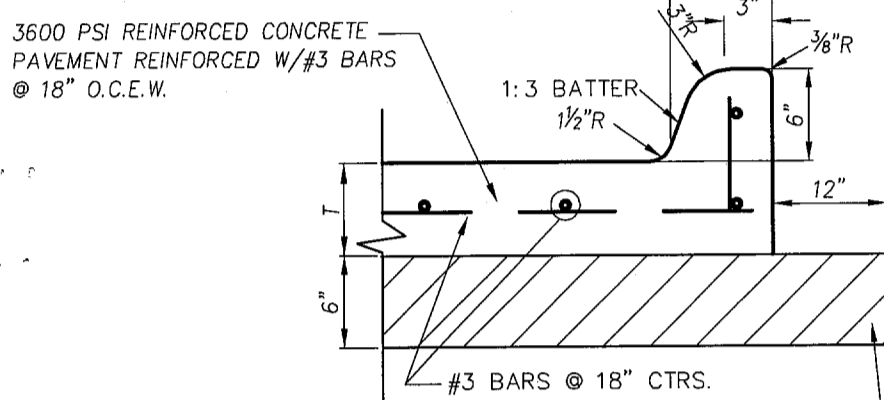
**LONGITUDINAL BUTT JOINT**  
N.T.S.

NOTE:  
DOWELS AND REINFORCING BARS SHALL BE SUPPORTED BY AN APPROVED DEVICE.

- NOTES:
- NO. 5 SMOOTH DOWEL BAR MAY BE USED IN 5 INCH AND 6 INCH PAVEMENT THICKNESS.
  - LONGITUDINAL BUTT JOINTS MAY BE UTILIZED IN PLACE OF LONGITUDINAL HINGED (KEYWAY) JOINTS AT CONTRACTORS OPTION.
  - DOWEL BARS SHALL BE DRILLED INTO PAVEMENT HORIZONTALLY BY USE OF A MECHANICAL RIG.
  - DRILLED BY HAND IS NOT ACCEPTABLE. PUSHING DOWEL BARS INTO GREEN CONCRETE NOT ACCEPTABLE.

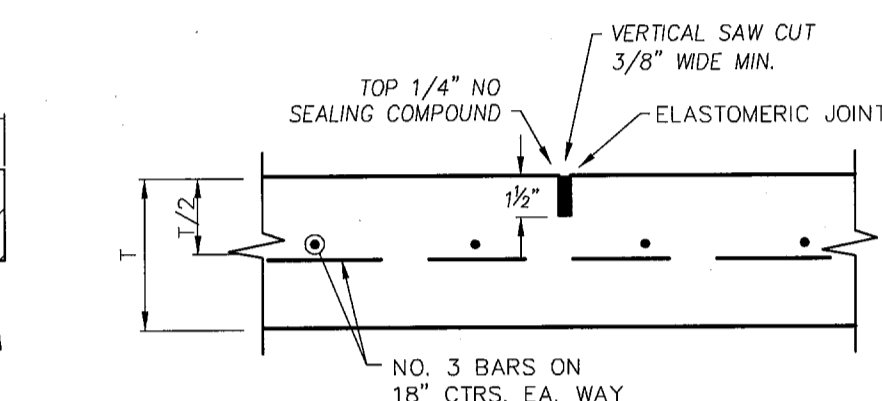


**FLUME DETAIL**  
N.T.S.



**CONCRETE PAVEMENT SECTION**  
N.T.S.

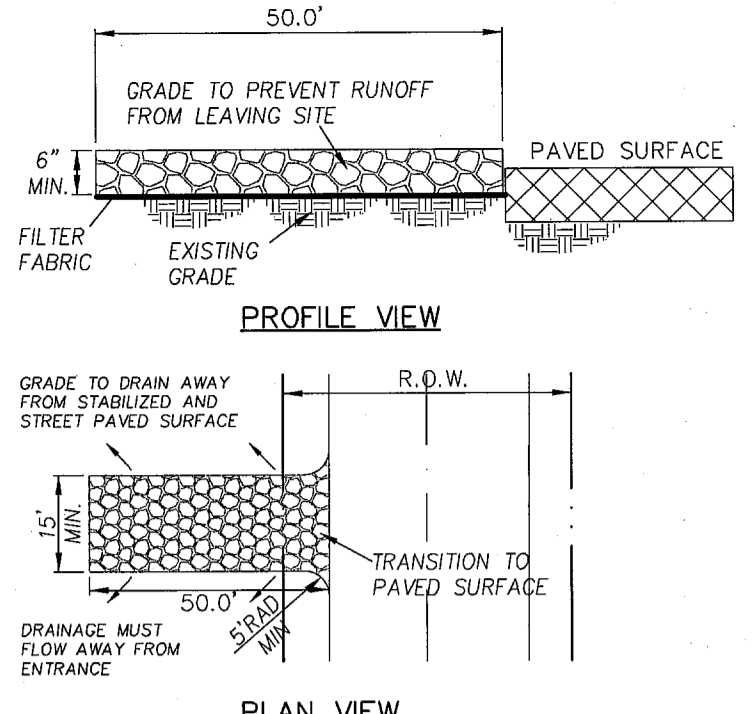
NOTE:  
PAVEMENT IN CITY R.O.W. AND FIRELANES TO BE PER CITY STANDARDS.



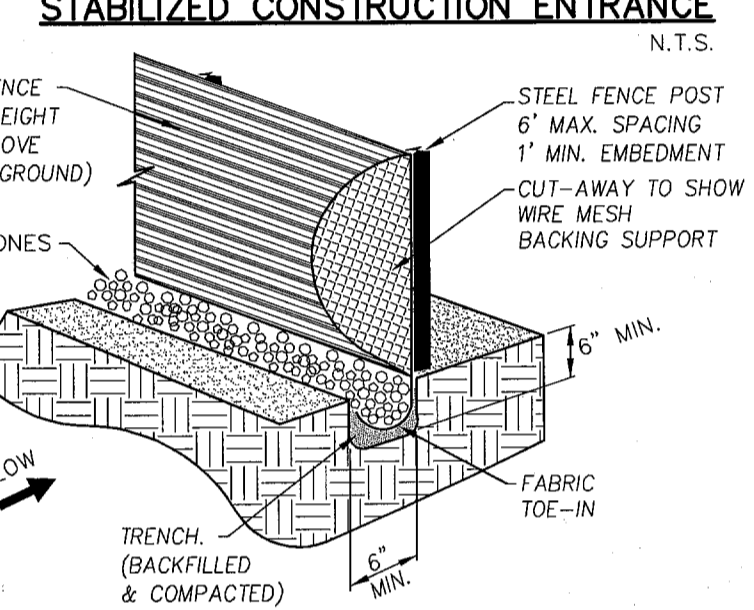
**SAWED DUMMY (CONTROL) JOINT**  
N.T.S.

NOTE:  
MAXIMUM SPACING IS 15' CENTERS

**PAVEMENT DETAILS**



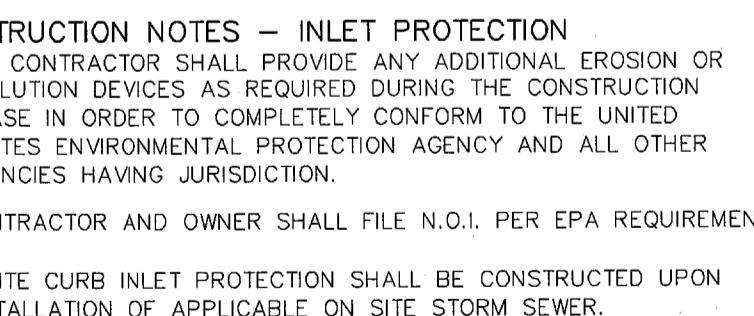
- STABILIZED CONSTRUCTION ENTRANCE**  
N.T.S.
- NOTES:
- STONE SHALL BE 3 TO 5 INCH DIAMETER CRUSHED ROCK OR ACCEPTABLE CRUSHED PORTLAND CEMENT CONCRETE.
  - WHEN NECESSARY, VEHICLES SHALL BE CLEANED TO REMOVE SEDIMENT PRIOR TO ENTRANCE ONTO A PUBLIC ROADWAY. WHEN WASHING IS REQUIRED, IT SHALL BE DONE ON AN AREA STABILIZED WITH CRUSHED STONE WITH DRAINAGE FLOWING AWAY FROM BOTH THE STREET AND THE STABILIZED ENTRANCE. ALL SEDIMENT SHALL BE PREVENTED FROM ENTERING ANY STORM DRAIN, DITCH OR WATERCOURSE USING APPROVED METHODS.
  - THE ENTRANCE SHALL MAINTAINED IN A CONDITION WHICH WILL PREVENT TRACKING OR FLOWING OF SEDIMENT ONTO PAVED SURFACES. THIS MAY REQUIRE PERIODIC TOP DRESSING WITH ADDITIONAL STONE. A CONDITIONS DEMAND, ALL SEDIMENT SPILLED, DROPPED, WASHED OR TRACKED ONTO PAVED SURFACES, MUST BE REMOVED IMMEDIATELY.
  - THE ENTRANCE MUST BE PROPERLY GRADED OR INCORPORATE A DRAINAGE SWALE TO PREVENT RUNOFF FROM LEAVING THE CONSTRUCTION SITE.



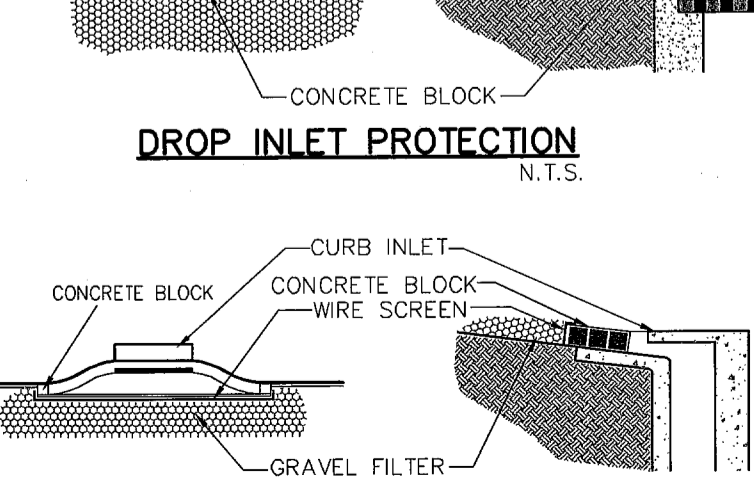
- SILT FENCE**  
N.T.S.
- NOTES:
- STEEL POSTS WHICH SUPPORT THE SILT FENCE SHALL BE INSTALLED ON A SLIGHT ANGLE TOWARD THE ANTICIPATED RUNOFF SOURCE. THE POST MUST BE EMBEDDED A MINIMUM OF ONE FOOT.
  - THE TOE OF THE SILT FENCE SHALL BE TRENCHED IN WITH A SPADE OR MECHANICAL TRENCHER SO THAT THE DOWNSLOPE FACE OF THE TRENCH IS FLAT AND PERPENDICULAR TO THE LINE OF FLOW. WHERE FENCE CANNOT BE TRENCHED IN (E.G. PAVEMENT), WEIGHT FABRIC FLAP WITH WASHED GRAVEL ON THE UPHILL SIDE TO PREVENT FLOW UNDER FENCE.
  - THE TRENCH MUST BE A MINIMUM OF 6 INCHES DEEP AND 6 INCHES WIDE TO ALLOW FOR THE SILT FENCE FABRIC TO BE LAID IN THE GROUND AND BACKFILLED WITH COMPACTED MATERIAL.
  - SILT FENCE SHALL BE SECURELY FASTENED TO EACH STEEL SUPPORT POST OR TO WOVEN WIRE WHICH IS IN TURN ATTACHED TO THE STEEL SUPPORT POST. THERE SHALL BE A 6 INCH DOUBLE OVERLAP, SECURELY FASTENED WHERE ENDS OF FABRIC MEET.
  - INSPECTION SHALL BE MADE WEEKLY OR AFTER EACH RAINFALL. REPAIR OR REPLACEMENT SHALL BE MADE PROMPTLY AS NEEDED.
  - SILT FENCE SHALL BE REMOVED WHEN THE SITE IS COMPLETELY STABILIZED SO AS NOT TO BLOCK OR IMPEDE STORM FLOW OR DRAINAGE.
  - ACCUMULATED SILT SHALL BE REMOVED WHEN IT REACHED A DEPTH OF 6 INCHES. THE SILT SHALL BE DISPOSED OF AT AN APPROVED SITE AND IN SUCH A MANNER AS TO NOT CONTRIBUTE TO ADDITIONAL SILTATION.

**CONSTRUCTION NOTES - INLET PROTECTION**

- THE CONTRACTOR SHALL PROVIDE ANY ADDITIONAL EROSION OR POLLUTION DEVICES AS REQUIRED DURING THE CONSTRUCTION PHASE IN ORDER TO COMPLETELY CONFORM TO THE UNITED STATES ENVIRONMENTAL PROTECTION AGENCY AND ALL OTHER AGENCIES HAVING JURISDICTION.
- CONTRACTOR AND OWNER SHALL FILE N.O.I. PER EPA REQUIREMENTS.
- ONSITE CURB INLET PROTECTION SHALL BE CONSTRUCTED UPON INSTALLATION OF APPLICABLE ON SITE STORM SEWER.

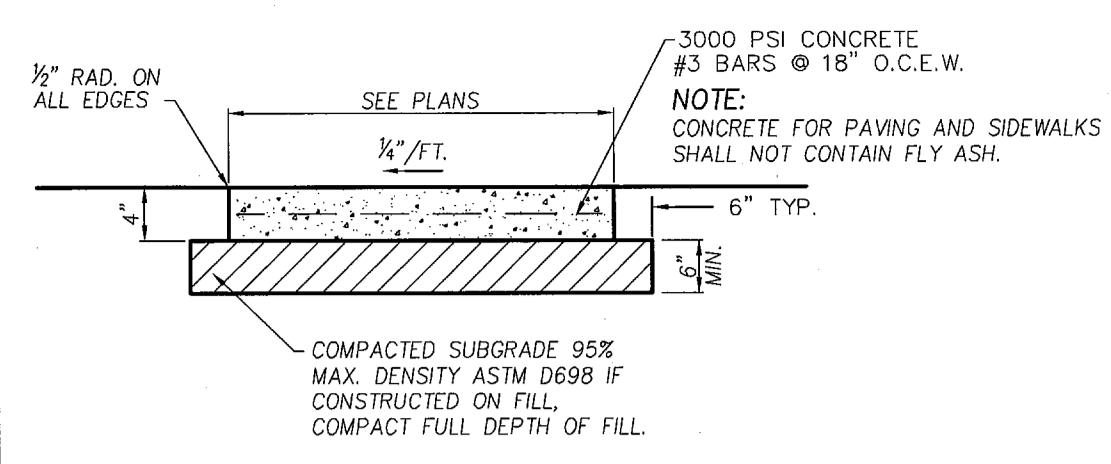


**DROP INLET PROTECTION**  
N.T.S.

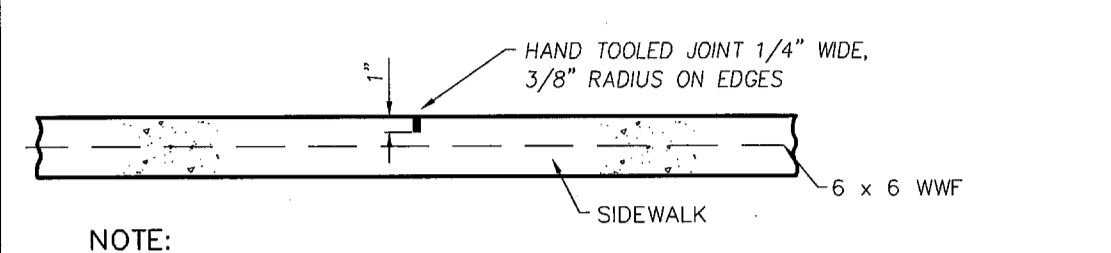


**CURB INLET PROTECTION**  
N.T.S.

**EROSION CONTROL**  
N.T.S.

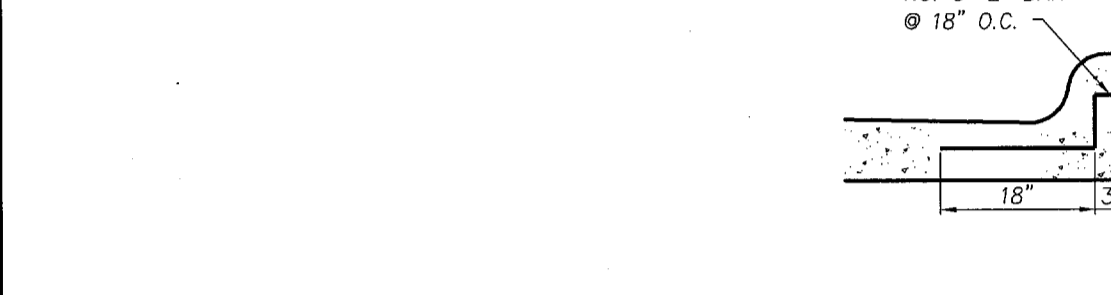


**SIDEWALK CROSS-SECTION**  
N.T.S.

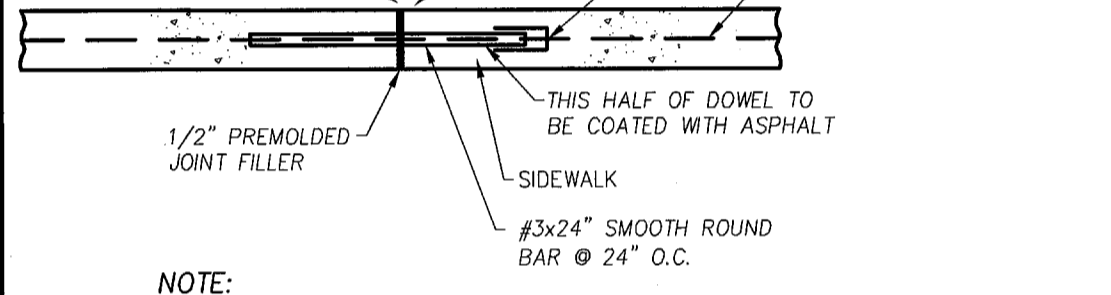


**CONTRACTION JOINT**  
N.T.S.

NOTE:  
1. CONTRACTION JOINTS TO BE SPACED AT 5'.



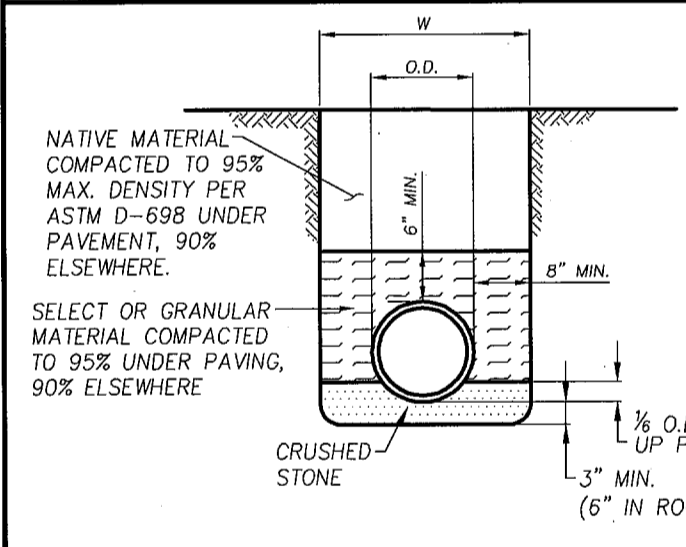
**JOINT DETAIL FOR SIDEWALK ADJACENT TO CURB**  
N.T.S.



**EXPANSION JOINT**  
N.T.S.

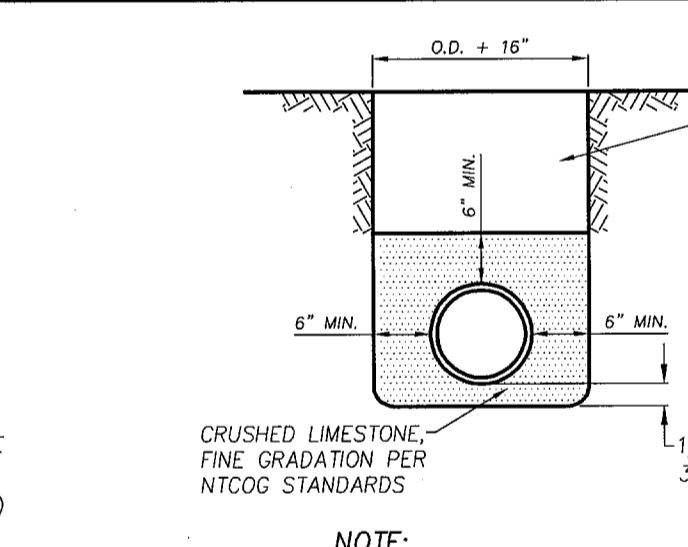
NOTE:  
1. EXPANSION JOINTS TO BE SPACED AT 30' OR ADJACENT TO PAVEMENT EXPANSION JOINTS

**SIDEWALK DETAILS**



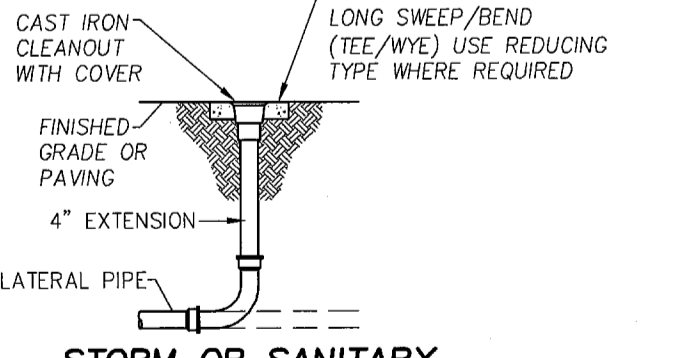
**RCP DUCTILE IRON & PVC WATER PIPE EMBEDMENT**  
N.T.S.

NOTE:  
THESE ARE EMBEDMENTS FOR PRIVATE LINES. FOR PUBLIC LINES, CITY STANDARD DETAILS CONTROL.



**STORM AND SANITARY SEWER PIPE EMBEDMENT-PVC AND POLYETHYLENE**  
N.T.S.

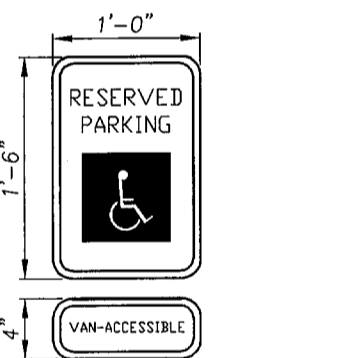
NOTE:  
THESE ARE EMBEDMENTS FOR PRIVATE LINES. FOR PUBLIC LINES, CITY STANDARD DETAILS CONTROL.



**STORM OR SANITARY CLEANOUT DETAIL**  
N.T.S.

**UTILITY DETAILS**

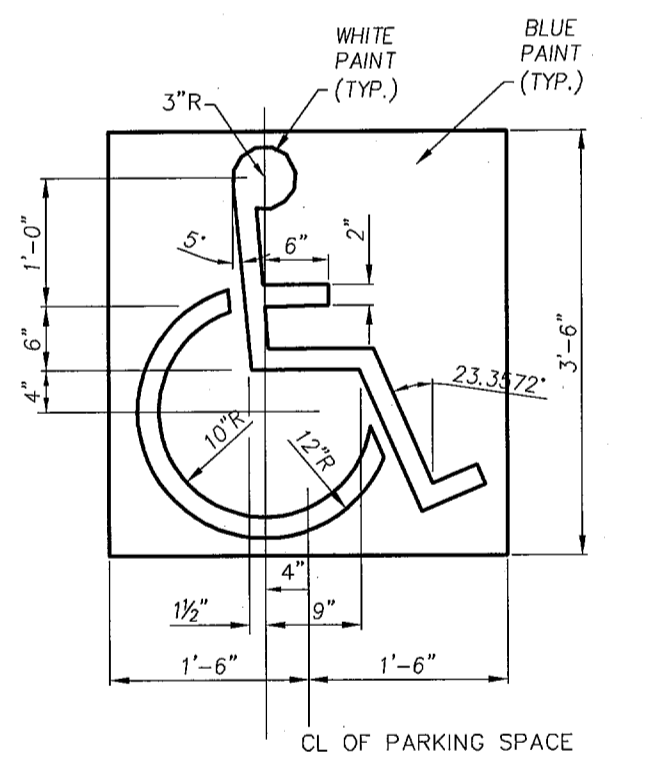
**NOTE**  
DETAILS ON THIS SHEET ARE PRIVATE. ALL WORK WITHIN PUBLIC EASEMENTS OR RIGHT-OF-WAY SHALL BE PER CITY (OR STATE, IF APPLICABLE) STANDARD DETAILS. THE CONTRACTOR IS REQUIRED TO HAVE ON-SITE, AT ALL TIMES, A COPY OF THE CITY'S CONSTRUCTION DETAILS.



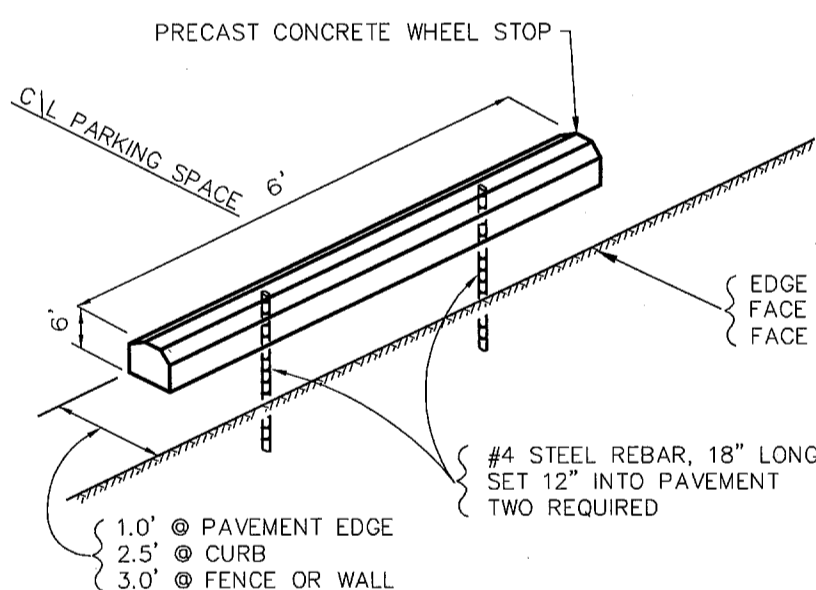
**TYPICAL SIGNAGE DETAIL TYPE II**  
N.T.S.

COLORS:  
LETTERS AND BORDER- GREEN  
SYMBOL ON BLUE BACKGROUND  
SIGN BACKGROUND-WHITE

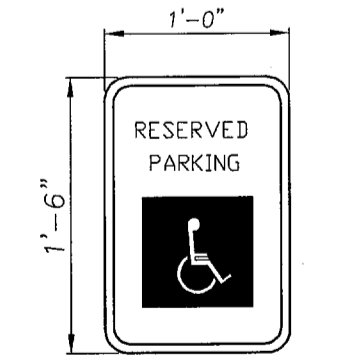
- NOTES:
- SPACING BETWEEN LETTERS, COLORS, AND PROCESSES SHALL CONFORM STANDARD HIGHWAY AND SIGN DESIGNS FOR TEXAS.
  - INSTALL WHERE INDICATED ON PLANS.
  - VAN-ACCESSIBLE SIGNAGE ON VAN SPACES ONLY.



**HANDICAP PARKING SYMBOL DETAIL**  
N.T.S.



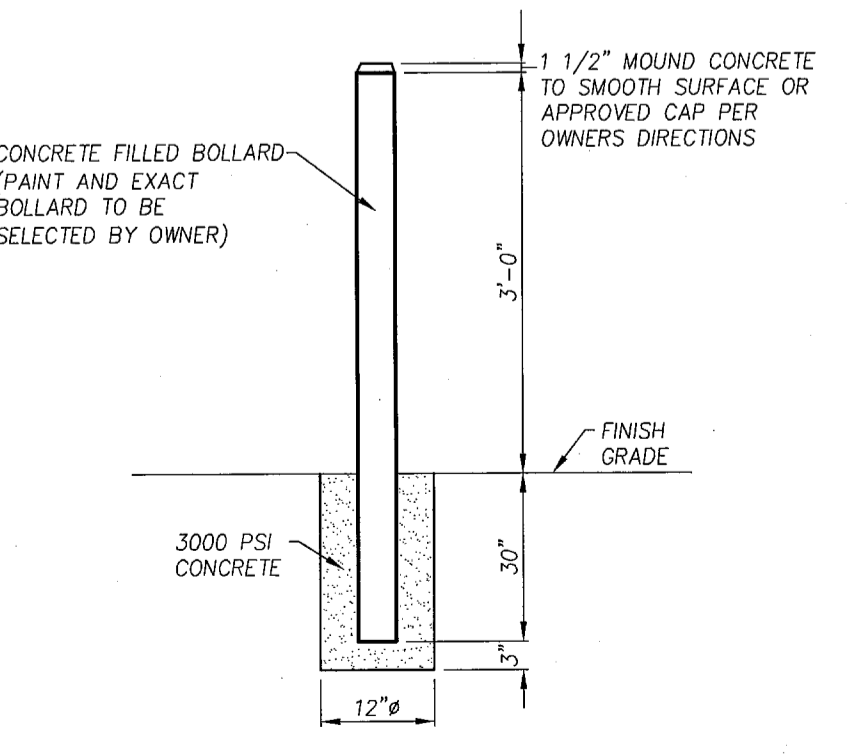
**WHEEL STOP DETAIL**  
N.T.S.



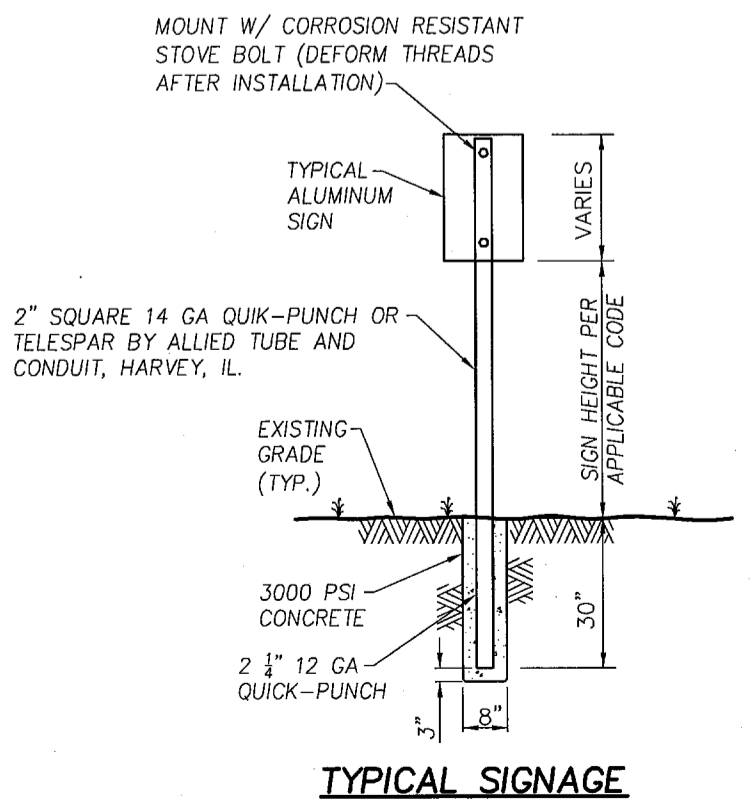
**TYPICAL SIGNAGE DETAIL TYPE I**  
N.T.S.

COLORS:  
LETTERS AND BORDER- GREEN  
SYMBOL ON BLUE BACKGROUND  
SIGN BACKGROUND-WHITE

- NOTES:
- SPACING BETWEEN LETTERS, COLORS, AND PROCESSES SHALL CONFORM STANDARD HIGHWAY AND SIGN DESIGNS FOR TEXAS.
  - INSTALL WHERE INDICATED ON PLANS.
  - VAN-ACCESSIBLE SIGNAGE ON VAN SPACES ONLY.



**BOLLARD DETAIL**  
N.T.S.



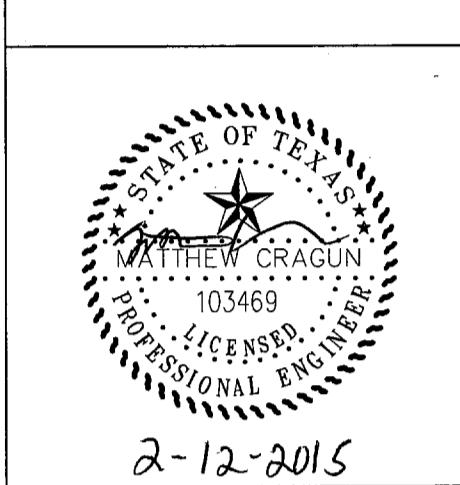
**TYPICAL SIGNAGE MOUNTING DETAIL**  
N.T.S.

**MISCELLANEOUS DETAILS**



**ID STUDIO 4, LLC**  
1431 GREENWAY DR, SUITE 150  
IRVING, TEXAS 75038  
TEL: 972.870.1288  
WWW.IDSTUDIO4.COM

CLIENT:  
**FRONT BURNER RESTAURANTS**  
5206 BELT LINE ROAD  
DALLAS, TEXAS 75254  
972.905.7139



2-12-2015

**IDA CLAIRE**

5001 BELL LINE ROAD  
ADDISON TEXAS 75254

CLIENT: FRONT BURNER RESTAURANTS  
5206 BELT LINE ROAD  
DALLAS, TEXAS 75254

**Cumulus Design**  
Firm #14810  
2080 N. Highway 360, Suite 240  
Grand Prairie, Texas 75050  
Tel. 214.235.0367

DATE	DESCRIPTION

SHEET NAME:  
**DETAILS (PRIVATE)**

SHEET:  
**C1.08**

PROJECT NUMBER:  
ADDISON PROJECT  
#15-02