

**PLANTING SPECIFICATIONS**

WEED CONTROL - KILL AND REMOVE ALL WEEDS FROM THE SITE PRIOR TO PLANTING. AFTER COMPLETION OF SOIL PREPARATION, THE CONTRACTOR SHALL APPLY A SELECTIVE PRE-EMERGENT TO ALL PLANTING AREAS EXCEPT BEDDED LAWN AREAS.

CULTIVATION - IMMEDIATELY AFTER APPLICATION OF WEED CONTROL, CULTIVATE ALL AREAS TO A DEPTH OF 1:1:1.

ENHANCEMENT - MAKE ALL SOIL AREAS SMOOTH AND EVEN WITH A FINISH GRADE. ALL AREAS SHALL BE WATERED DOWN TO THE TOP 6" OF SOIL, AND THE AREA WATERED DOWN TO TWO DIRECTIONS IN TWO 1:1:1 HANDS. CLEAN OUTS, VALVE BOXES AND SIMILAR FEATURES, MAKE CLEAN ALL AREAS.

SOIL PREPARATION AND FERTILIZATION - IN ALL PLANTING AREAS THE CONTRACTOR SHALL PREPARE THE SOIL TO A DEPTH OF 18" IN THE FIELD. THE SOIL SHALL BE THOROUGHLY CULTIVATED IN TWO DIRECTIONS IN TWO 1:1:1 HANDS. CLEAN OUTS, VALVE BOXES AND SIMILAR FEATURES, MAKE CLEAN ALL AREAS.

DEEP RIP ALL AREAS TO BE PLANTED OR SEEDING TO AN UNIFORM DEPTH OF AT LEAST 12" AND FOR THE ENTIRE DEPTH THE SOIL SHALL BE MADE LOOSE AND FRAGMENTED.

ALL MATERIALS SHALL BE UNIFORM AND THOROUGHLY BLENDED BY REPEATED ROTARY CULTIVATION INTO THE 6" OF TOP SOIL.

AT THE OF PLANTING, THE TOP 2" (TWO INCHES) OF ALL AREAS TO BE PLANTED OR SEEDING SHALL BE FREE OF STONES, WEEDS, ROOTS OR OTHER FOREIGN MATERIAL. THE CONTRACTOR SHALL REMOVE ALL SUCH MATERIAL BE FREE FROM ALL WEED PLANTERS OR SIMILAR OBJECTS THAT WOULD BE A HAZARD TO PLANTING OR MAINTENANCE. REMOVE ALL DEBRIS FROM THE SITE.

AFTER 30 DAYS MAINTENANCE PERIOD, APPLY 25 LBS. PER 10000 SQ. FT. OF GRO-POWER PLUS IN ALL LANDSCAPE AREAS.

REFER TO SOILS REPORT FOR ANY ADDITIONAL SOIL ADJUSTMENTS.

BACKFILL MIX - TREES, SHRUBS AND VINES

SOIL MIX FOR BACKFILL IN PITS FOR TREES, SHRUBS AND VINES SHALL CONSIST OF THE FOLLOWING:

- 40% BY VOLUME ORGANIC AMENDMENT
- 40% BY VOLUME SAND
- 15% GRO-POWER PLUS

PLANTING PITS SHALL BE EXCAVATED THREE (3) FEET DEEPER THAN THE DEPTH OF THE ROOT BALL. BACKFILL SHALL THEN BE ADDED AS TOP SOIL ABOVE. THE PREPARED SOIL SHALL BE UNIFORM BLENDED IN AN AREA PROPORTIONED USING A SUITABLE MEASURING CONTAINER. UNBLENDED EXCAVATED SOIL SHALL BE REMOVED FROM SITE. PROTECT THE MIX FROM WATER UNTIL IT HAS BEEN PLACED IN BACKFILL AROUND PLANTS.

INSTALL PLANTING TABLETS IN THE FOLLOWING APPLICATIONS: 1. GRANT EACH GALLON PLANT - 2 TABLETS 2. 2-3 GALLON PLANT - 3 TABLETS 3. 4-6 GALLON PLANT - 5 TABLETS 4. 7-9 GALLON PLANT - 6 TABLETS 5. 10-12 GALLON PLANT - 8 TABLETS PER 1/2" CALIPER OF TREE TRUNK.

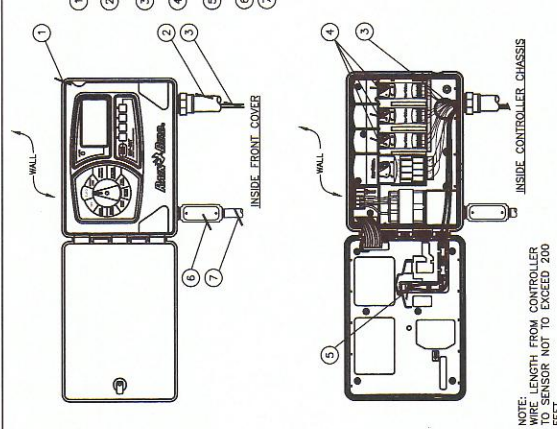
AGRONOMIC SOILS REPORT

AFTER COMPLETION OF SOIL PREPARATION, THE CONTRACTOR SHALL PROVIDE THE TESTING OF PLANTING SOILS. SOILS TESTING LABORATORY THAT IS A MEMBER OF THE CALIFORNIA ASSOCIATION OF AGRICULTURAL LABS. REPRESENTATIVE SOILS SAMPLES SHALL BE SUBMITTED TO THE TESTING LABORATORY. THE TESTING LABORATORY SHALL BE DETERMINED SOLELY BY THE CITY.

GUARANTEE - ALL SPECIFIED TREES AND ALL SHRUBS OF 9 GALLON SIZE AND LARGER SHALL BE GUARANTEED BY THE CONTRACTOR TO TAKE ROOT AND LARGER. CONTRACTOR SHALL GUARANTEE THE SURVIVAL OF ALL SPECIFIED TREES AND SHRUBS HAVE RECEIVED NORMAL CARE AND MAINTENANCE AS DETERMINED BY THE LANDSCAPE ARCHITECT AND OWNER.

ALL OTHER PLANTING INCLUDING, BUT NOT NECESSARILY LIMITED TO, SPECIFIED TREES AND SHRUBS OF 9 GALLON SIZE AND LARGER SHALL BE GUARANTEED BY THE CONTRACTOR TO TAKE ROOT AND LARGER AND GROW IN A HEALTHY CONDITION FOR SIXTY (60) DAYS AFTER COMPLETION OF ALL CONTRACTOR'S PLANTING WORK.

ANY OF SAID TREE SHRUBS OR OTHER PLANTINGS WHICH DIE BACK OR LOSE PORT AND SIZE AS ORIGINALLY SPECIFIED SHALL BE REPLACED WITH ANOTHER PLANTING OF THE SAME SPECIES AND SIZE AS DETERMINED BY LANDSCAPE ARCHITECT AND/OR OWNER AT NO COST TO OWNER.



**K CONTROLLER**

**IRRIGATION SPECIFICATIONS**

INSTALL ALL MATERIALS TO COMPLY WITH LOCAL CODES AND ORDINANCES. VERIFY PREPARATION PRIOR TO BEGINNING OF CONSTRUCTION.

VERIFICATION - ALL SCALED DIMENSIONS ARE APPROXIMATE. BEFORE PROCEEDING WITH ANY WORK, THE CONTRACTOR SHALL CAREFULLY CHECK ALL DIMENSIONS AGAINST THE DRAWINGS. ANY DISCREPANCY OR DEVIATION FROM THE PLAN MUST HAVE THE APPROVAL OF THE LANDSCAPE ARCHITECT.

DESIGN AND CONSTRUCTION - THE CONTRACTOR SHALL BE RESPONSIBLE FOR THE DESIGN AND CONSTRUCTION OF THE IRRIGATION SYSTEM. ALL MATERIALS AND METHODS SHALL BE APPROVED BY THE LANDSCAPE ARCHITECT.

DEPTH OF FINISH GRADE SHALL BE AS SPECIFIED IN THE DRAWINGS. THE CONTRACTOR SHALL BE RESPONSIBLE FOR THE LOCATION AND DEPTH OF FINISH GRADE. THE CONTRACTOR SHALL BE RESPONSIBLE FOR THE LOCATION AND DEPTH OF FINISH GRADE. THE CONTRACTOR SHALL BE RESPONSIBLE FOR THE LOCATION AND DEPTH OF FINISH GRADE.

INSTALLATION OF IRRIGATION SYSTEM SHALL BE IN ACCORDANCE WITH THE FOLLOWING SPECIFICATIONS:

- 1. MAIN LINE PRESSURE PLASTIC - 18" THINWALL GALV. GALV. GALV.
- 2. MAIN LINE PRESSURE PLASTIC - 18" THINWALL GALV. GALV. GALV.
- 3. MAIN LINE PRESSURE PLASTIC - 18" THINWALL GALV. GALV. GALV.
- 4. MAIN LINE PRESSURE PLASTIC - 18" THINWALL GALV. GALV. GALV.

INSTALLATION OF IRRIGATION SYSTEM SHALL BE IN ACCORDANCE WITH THE FOLLOWING SPECIFICATIONS:

- 1. MAIN LINE PRESSURE PLASTIC - 18" THINWALL GALV. GALV. GALV.
- 2. MAIN LINE PRESSURE PLASTIC - 18" THINWALL GALV. GALV. GALV.
- 3. MAIN LINE PRESSURE PLASTIC - 18" THINWALL GALV. GALV. GALV.
- 4. MAIN LINE PRESSURE PLASTIC - 18" THINWALL GALV. GALV. GALV.

INSTALLATION OF IRRIGATION SYSTEM SHALL BE IN ACCORDANCE WITH THE FOLLOWING SPECIFICATIONS:

- 1. MAIN LINE PRESSURE PLASTIC - 18" THINWALL GALV. GALV. GALV.
- 2. MAIN LINE PRESSURE PLASTIC - 18" THINWALL GALV. GALV. GALV.
- 3. MAIN LINE PRESSURE PLASTIC - 18" THINWALL GALV. GALV. GALV.
- 4. MAIN LINE PRESSURE PLASTIC - 18" THINWALL GALV. GALV. GALV.

INSTALLATION OF IRRIGATION SYSTEM SHALL BE IN ACCORDANCE WITH THE FOLLOWING SPECIFICATIONS:

- 1. MAIN LINE PRESSURE PLASTIC - 18" THINWALL GALV. GALV. GALV.
- 2. MAIN LINE PRESSURE PLASTIC - 18" THINWALL GALV. GALV. GALV.
- 3. MAIN LINE PRESSURE PLASTIC - 18" THINWALL GALV. GALV. GALV.
- 4. MAIN LINE PRESSURE PLASTIC - 18" THINWALL GALV. GALV. GALV.

INSTALLATION OF IRRIGATION SYSTEM SHALL BE IN ACCORDANCE WITH THE FOLLOWING SPECIFICATIONS:

- 1. MAIN LINE PRESSURE PLASTIC - 18" THINWALL GALV. GALV. GALV.
- 2. MAIN LINE PRESSURE PLASTIC - 18" THINWALL GALV. GALV. GALV.
- 3. MAIN LINE PRESSURE PLASTIC - 18" THINWALL GALV. GALV. GALV.
- 4. MAIN LINE PRESSURE PLASTIC - 18" THINWALL GALV. GALV. GALV.

INSTALLATION OF IRRIGATION SYSTEM SHALL BE IN ACCORDANCE WITH THE FOLLOWING SPECIFICATIONS:

- 1. MAIN LINE PRESSURE PLASTIC - 18" THINWALL GALV. GALV. GALV.
- 2. MAIN LINE PRESSURE PLASTIC - 18" THINWALL GALV. GALV. GALV.
- 3. MAIN LINE PRESSURE PLASTIC - 18" THINWALL GALV. GALV. GALV.
- 4. MAIN LINE PRESSURE PLASTIC - 18" THINWALL GALV. GALV. GALV.

INSTALLATION OF IRRIGATION SYSTEM SHALL BE IN ACCORDANCE WITH THE FOLLOWING SPECIFICATIONS:

- 1. MAIN LINE PRESSURE PLASTIC - 18" THINWALL GALV. GALV. GALV.
- 2. MAIN LINE PRESSURE PLASTIC - 18" THINWALL GALV. GALV. GALV.
- 3. MAIN LINE PRESSURE PLASTIC - 18" THINWALL GALV. GALV. GALV.
- 4. MAIN LINE PRESSURE PLASTIC - 18" THINWALL GALV. GALV. GALV.

INSTALLATION OF IRRIGATION SYSTEM SHALL BE IN ACCORDANCE WITH THE FOLLOWING SPECIFICATIONS:

- 1. MAIN LINE PRESSURE PLASTIC - 18" THINWALL GALV. GALV. GALV.
- 2. MAIN LINE PRESSURE PLASTIC - 18" THINWALL GALV. GALV. GALV.
- 3. MAIN LINE PRESSURE PLASTIC - 18" THINWALL GALV. GALV. GALV.
- 4. MAIN LINE PRESSURE PLASTIC - 18" THINWALL GALV. GALV. GALV.

INSTALLATION OF IRRIGATION SYSTEM SHALL BE IN ACCORDANCE WITH THE FOLLOWING SPECIFICATIONS:

- 1. MAIN LINE PRESSURE PLASTIC - 18" THINWALL GALV. GALV. GALV.
- 2. MAIN LINE PRESSURE PLASTIC - 18" THINWALL GALV. GALV. GALV.
- 3. MAIN LINE PRESSURE PLASTIC - 18" THINWALL GALV. GALV. GALV.
- 4. MAIN LINE PRESSURE PLASTIC - 18" THINWALL GALV. GALV. GALV.

INSTALLATION OF IRRIGATION SYSTEM SHALL BE IN ACCORDANCE WITH THE FOLLOWING SPECIFICATIONS:

- 1. MAIN LINE PRESSURE PLASTIC - 18" THINWALL GALV. GALV. GALV.
- 2. MAIN LINE PRESSURE PLASTIC - 18" THINWALL GALV. GALV. GALV.
- 3. MAIN LINE PRESSURE PLASTIC - 18" THINWALL GALV. GALV. GALV.
- 4. MAIN LINE PRESSURE PLASTIC - 18" THINWALL GALV. GALV. GALV.

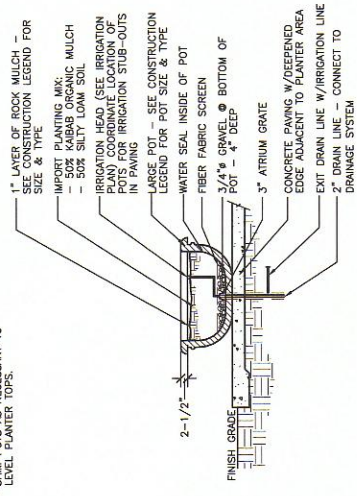
INSTALLATION OF IRRIGATION SYSTEM SHALL BE IN ACCORDANCE WITH THE FOLLOWING SPECIFICATIONS:

- 1. MAIN LINE PRESSURE PLASTIC - 18" THINWALL GALV. GALV. GALV.
- 2. MAIN LINE PRESSURE PLASTIC - 18" THINWALL GALV. GALV. GALV.
- 3. MAIN LINE PRESSURE PLASTIC - 18" THINWALL GALV. GALV. GALV.
- 4. MAIN LINE PRESSURE PLASTIC - 18" THINWALL GALV. GALV. GALV.

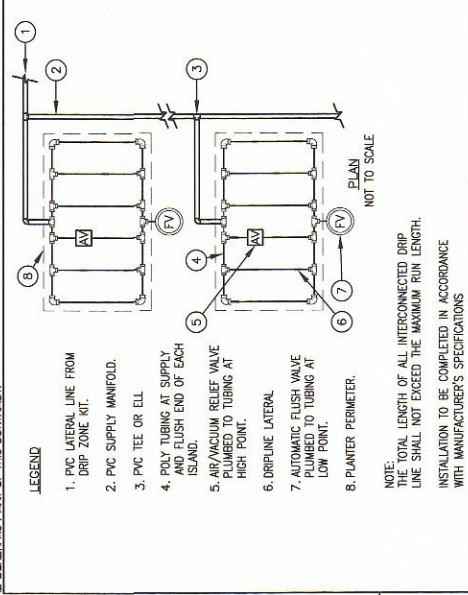
INSTALLATION OF IRRIGATION SYSTEM SHALL BE IN ACCORDANCE WITH THE FOLLOWING SPECIFICATIONS:

- 1. MAIN LINE PRESSURE PLASTIC - 18" THINWALL GALV. GALV. GALV.
- 2. MAIN LINE PRESSURE PLASTIC - 18" THINWALL GALV. GALV. GALV.
- 3. MAIN LINE PRESSURE PLASTIC - 18" THINWALL GALV. GALV. GALV.
- 4. MAIN LINE PRESSURE PLASTIC - 18" THINWALL GALV. GALV. GALV.

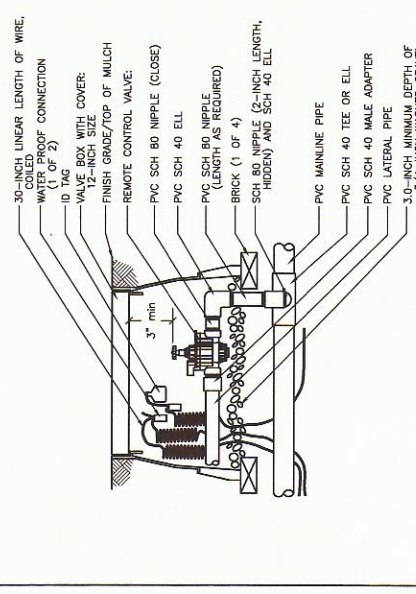
**J IRRIGATION TO POTS**



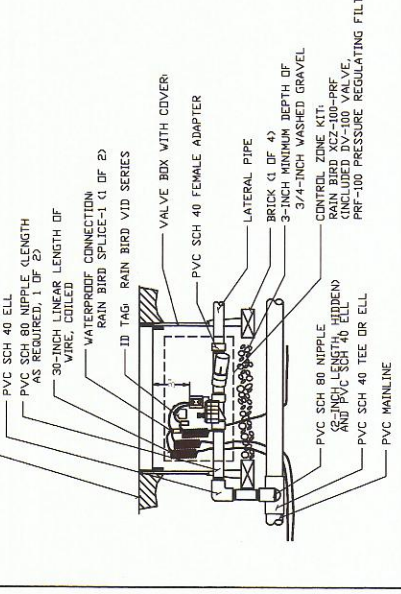
**I DRIP LAYOUT**



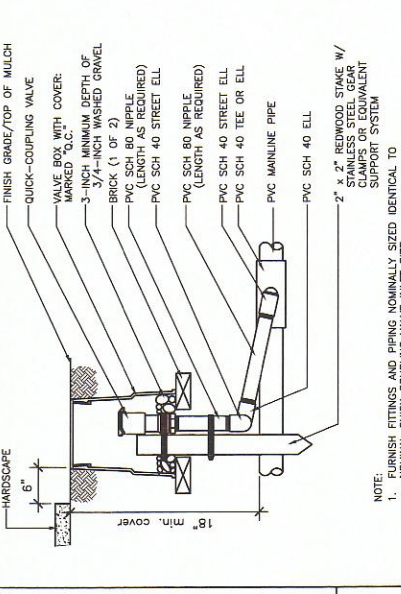
NOTE: THE TOTAL LENGTH OF ALL INTERCONNECTED DRIP LINES SHALL NOT EXCEED THE MAXIMUM RUN LENGTH WITH MANUFACTURER'S SPECIFICATIONS.



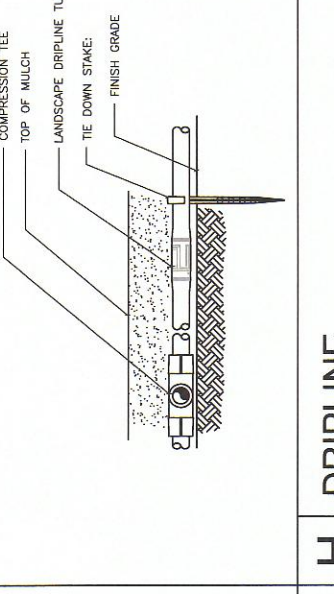
**A TRENCHING**



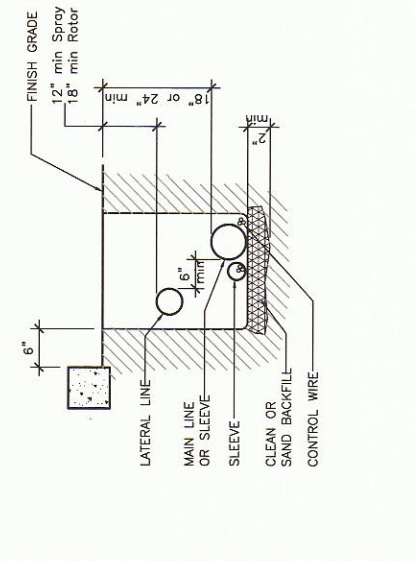
**B GATE VALVE**



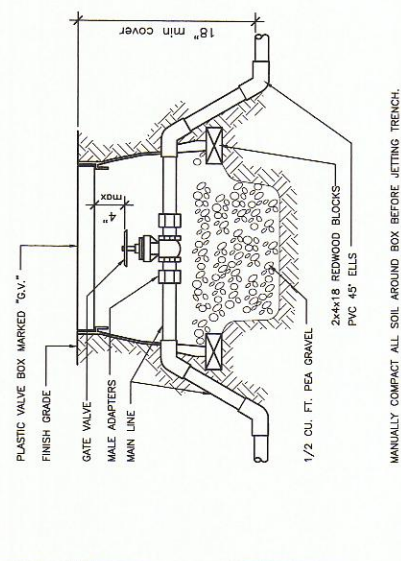
**C BACKFLOW PREVENTER**



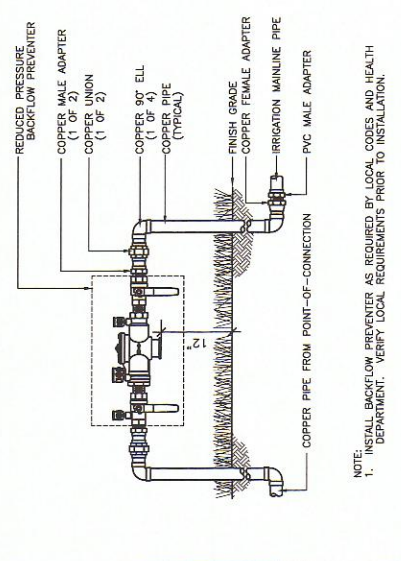
**D POP-UP BUBBLER**



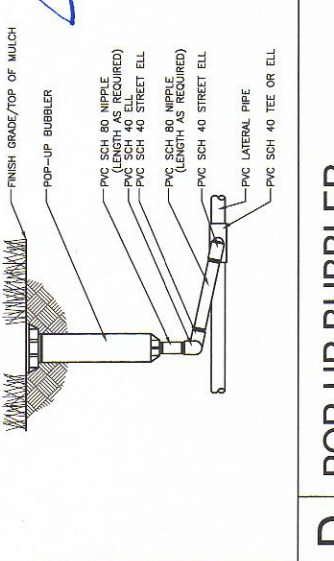
**E CONTROL VALVE**



**F DRIP VALVE KIT**



**G QUICK COUPLER**



**H DRIPLINE**

**STAN SMITH ASSOCIATES**  
23011 Madison Parkway  
LABORATORY ARCHITECTURE  
PLANNING - REPAIRS  
FAX 830-4465  
(949) 555-6413  
Suite 112 - Laguna Hills, CA 92653

**DETAILS**

**LAYDOWN**  
5100 BELT LINE RD  
ADDISON, TX 7524

**IRRI-PAUL & PAUL**

ISSUE DATE: 12-1-14  
REVISED: 11-10-14  
11-02-2014 Pw Desig Re-Submitt  
11-02-2014 MS

Approved for Construction  
Town of Addison Parks Dept.  
12.17.14

Scale NOT TO SCALE  
Drawn By: NS  
Checked By: SSA  
Sheet Number: L-3