

Note: All Curbs Shall Be Standard  
6 inch concrete integral curb  
Unless otherwise noted.

2-28-79 Added Horizontal Layout  
and paving plan for second installment

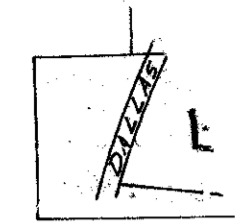
CHANGE ORDER #5 2-16-79 SHOWS REVISED  
ENTRANCE NORTH OF LOT E; ALSO SHOWS DE-  
LETION OF AN ISLAND SOUTH OF LOT E.

CHANGE ORDER #6 3-12-79 SHOWS THE  
ADDITION OF AN ISLAND ON THE SOUTH  
SIDE OF LOT C

Note: Curve numbers refer to  
curve data for curves on  
this sheet only. Do not use  
curve data shown in this  
table for sheets 14 or 16.

Bomante Finish

Standard Reinforced Concrete  
Pavement w/Integral Curb.  
Refer to sheet 14 for Special  
Paving Details.



MATCH LINE SHEET 14

KEY

CURVE DATA

CR. No.	Δ	R	T	L
1	02°44'13"	1256.93	30.99	60.71
2	17°21'22"	1256.93	191.85	380.76
3	01°32'03"	1256.93	16.83	33.66
4	00°44'02"	1256.93	8.17	16.34
5	11°36'57"	1256.93	17.71	35.41
6	10°55'23"	1256.93	116.49	232.31
7	02°18'41"	1190.93	24.28	48.54
8	09°01'32"	1190.93	94.00	187.60
9	01°26'47"	1190.93	28.23	40.46
10	00°24'50"	1190.93	9.50	19.00
11	00°26'30"	1190.93	9.79	19.57
12	01°24'30"	1190.93	16.37	32.74
13	07°19'11"	1190.93	76.18	152.15
14	04°47'56"	1190.93	50.05	100.04
15	08°44'37"	1127.43	86.10	172.05
16	02°54'08"	1127.43	28.56	57.11
17	09°02'01"	1144.43	90.41	180.84
18	18°	20'	MATCH EXISTING	
19	89°10'45"	18.0'	17.74	28.02
20	89°33'01"	5.0'	4.96	7.82
21	89°46'43"	5.0'	4.98	7.84
22	89°10'45"	18.0'	17.74	28.02
23	180°00'00"	7.5'		23.56
24	63°52'28"	16.0'	9.97	17.84
25	89°46'10"	5.0'	4.98	7.83
26	89°47'05"	7.0'	6.91	12.10
27	90°14'15"	5.0'	5.02	7.89
28	90°14'15"	5.0'	5.02	7.88
29	41°15'50"	7.0'	4.15	7.49
30	180°00'00"	5.0'	5.26	14.81
31	89°36'25"	5.0'	4.97	7.82
32	118°28'36"	7.0'	7.20	14.40
33	139°03'10"	10.0'	26.78	24.27
34	90°14'16"	5.0'	5.02	7.87
35	39°38'52"	7.0'	2.52	4.84
36	89°45'23"	5.0'	4.98	7.83
37	360°00'00"	9.5'		59.69
38	90°00'00"	5.0'	5.0'	7.85
39	90°00'00"	7.0'	7.0'	11.00
40	360°00'00"	19.5'		122.62
41	85°29'04"	16.0'	14.83	23.92
42	91°14'06"	16.0'	16.35	25.48
43	90°00'00"	3.0'	3.0'	4.71
44	82°16'27"	2.5'	2.18	3.59
45	97°43'33"	6.5'	7.84	11.09
46	180°00'00"	3.0'		9.02
47	24°28'35"	16.0'	17.30	26.38
48	90°00'00"	16.0'	16.0'	25.13
49	85°31'25"	2.0'	1.85	2.99
50	98°28'35"	5.0'	5.41	8.25
51	98°00'00"	4.5'	4.5'	7.07
52	85°31'25"	16.0'	14.80	23.88
53	180°00'00"	4.0'		12.57
54	98°29'54"	7.0'	7.57	11.55
55	85°30'15"	7.0'	6.47	10.45
56	84°59'15"	16.0'	18.17	18.13
57	101°06'38"	16.0'	19.45	28.28
58	180°00'00"	3.5'		11.0
59	98°29'54"	16.0'	17.31	26.39
60	118°11'23"	10.0'	16.70	20.63
61	61°48'07"	10.0'	5.99	10.79
62	180°00'00"	4.5'		14.14
63	122°27'55"	16.0'	29.14	34.20
64		8'±	MATCH EXISTING	
65	180°00'00"	2.5'		7.85
66	85°30'04"	16.0'	14.79	23.88

1/26/78 - Added TURN LANE CURVE DATA  
NOTE: ALL DIMENSIONS ARE TO BACK OF CURB

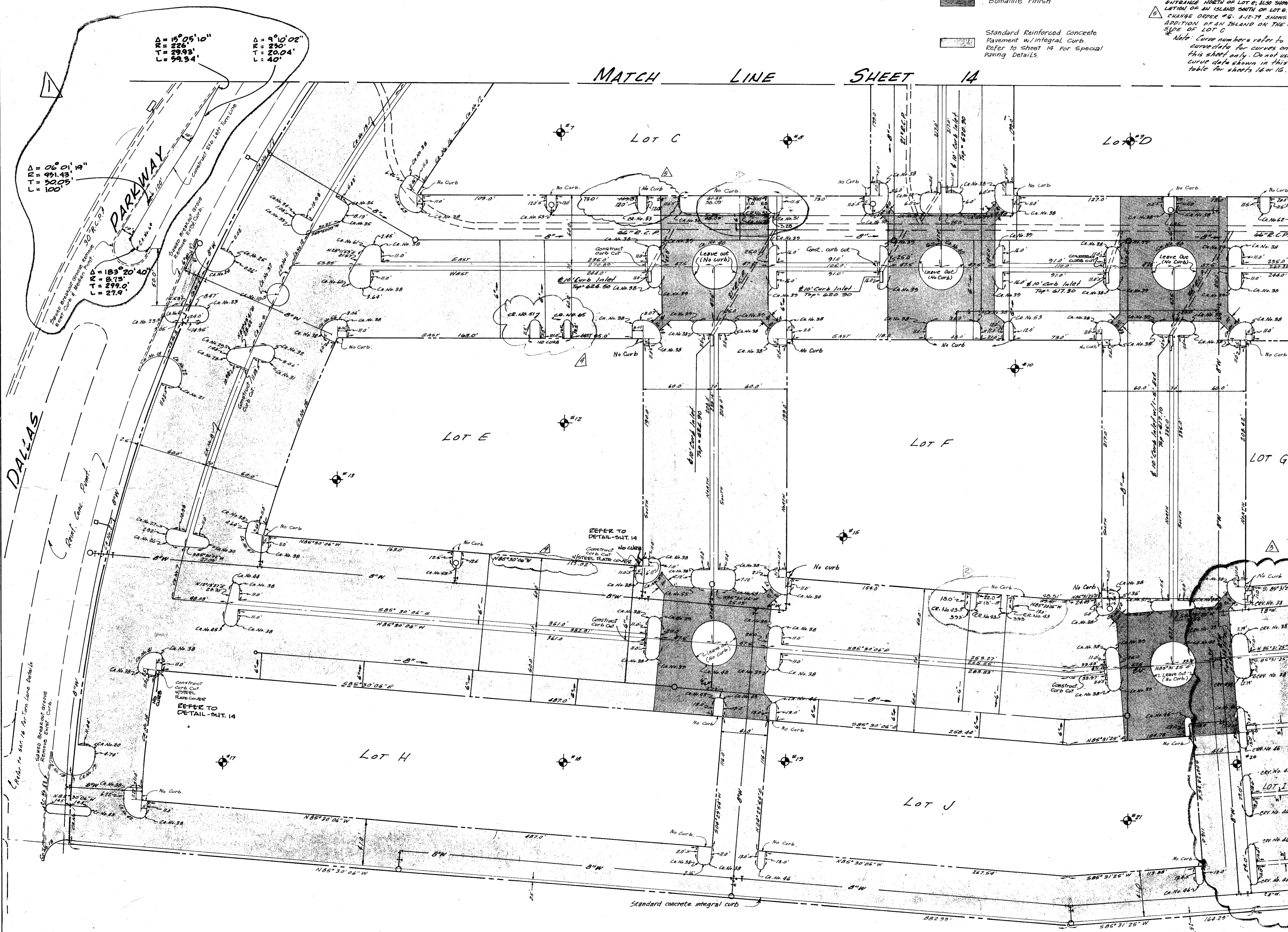
10/20/78 REVISED SERVICE DRIVE DIMENSIONS SOUTH SIDE OF C.P.P.

Bench Mark: Standard water dept. bench mark center inlet northwest corner Bell Line Road and Dallas Dewey. ELEV. 632.08

Indicates Soil Boring

**HORIZONTAL LAYOUT & PAVING PLAN**  
**VILLAGE ON THE PARKWAY**  
**VILLAGE PARKWAY VENTURE**  
Albert H. Wolff Associates, Inc. - Engineers  
**CITY OF ADDISON, TEXAS**

DESIGN	DRAWN	DATE	SCALE	NOTES	FILE
A.H.H.	A.V.H.	June 78	1"=40'	6183	



Δ = 15° 05' 10"  
R = 250'  
T = 29.93'  
L = 59.94'

Δ = 9° 10' 02"  
R = 250'  
T = 20.04'  
L = 40'

Δ = 06° 01' 19"  
R = 991.42'  
T = 50.05'  
L = 100'

Δ = 183° 20' 40"  
R = 8.73'  
T = 299.0'  
L = 27.9'

DALLAS

15