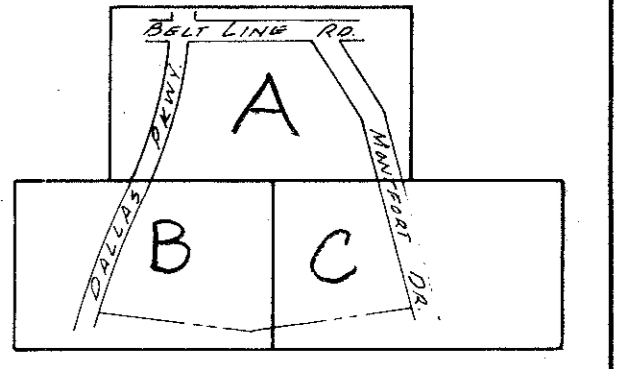


LOT CORNER COORDINATES

#	Y	X
49	1416.196	2697.396
50	1416.196	2399.684
52	1416.196	2272.684
56	1416.196	2008.133
59	1543.196	2399.684
60	1747.419	2399.684
61	1543.196	2583.245
62	1385.925	2724.604

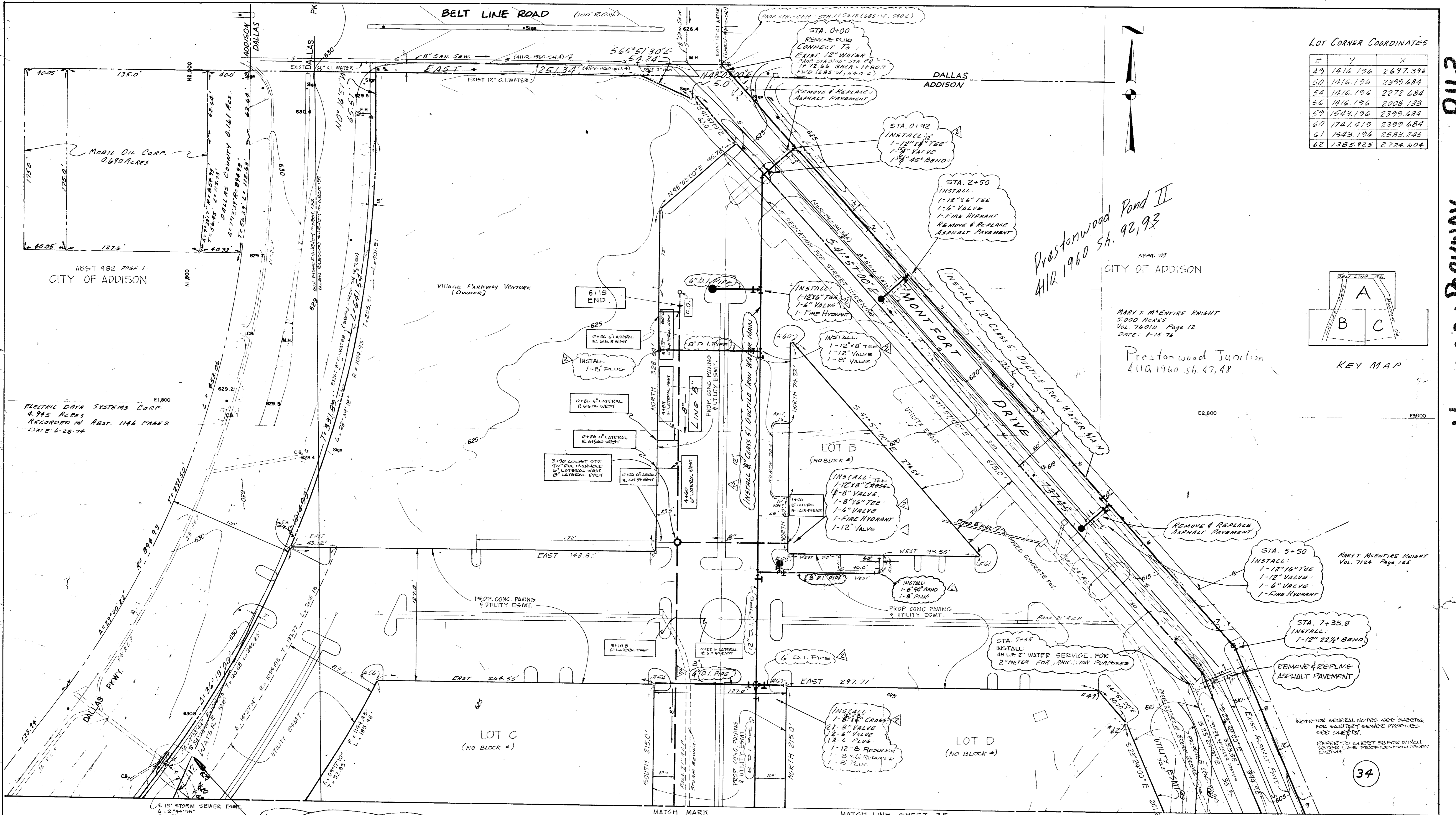


Prestonwood Pond II
411Q 1960 Sh. 92, 93

MARY T. McENTIRE KNIGHT
5.000 ACRES
VOL. 74010 PAGE 12
DATE: 1-15-74

Prestonwood Junction
411Q 1960 Sh. 47, 48

KEY MAP



FOR WATER RELOCATION
SEE 411Q-1909A SH. 15

BENCHMARK: STANDARD WATER DEPT. BENCHMARK
CENTER INLET NORTHWEST CORNER
BELT LINE ROAD AND DALLAS PKWY.
ELEV. 636.08

LOCATION: VILLAGE ON THE PARKWAY (CHANGE ORDER NO. 2)
DESIGNED: A. H. HALFF, INC. DATE: 10-17-78
REVISIONS: 1-19-79
ENGINEER: DESIGNED DALLAS WATER UTILITIES DEPT.
CONTRACT NO. 78-261, 78-262 STIMMONS SEPT. 25, 1978

LOCATION: VILLAGE ON THE PARKWAY - PHASE I
DESIGNED: ALBERT H. HALFF ASSOCIATES, INC. - ENGINEERS
DATE: 10-17-78
R.O.V. APPROVED: [Signature] DATE: 10-17-78
ENGINEER OF DESIGN: DALLAS WATER UTILITIES DEPT.
CONTRACT NO. 78-261, 78-262 STIMMONS SEPT. 25, 1978

WATER & SANITARY SEWER PLANS						
VILLAGE ON THE PARKWAY						
VILLAGE PARKWAY VENTURE						
ALBERT H. HALFF ASSOCIATES, INC. - ENGINEERS						
CITY OF ADDISON, TEXAS						
DESIGN	DRAWN	DATE	SCALE	NOTES	FILE	NO.
AMH	T.P.	MAY 1978	1"=40'	6143	411Q	1960