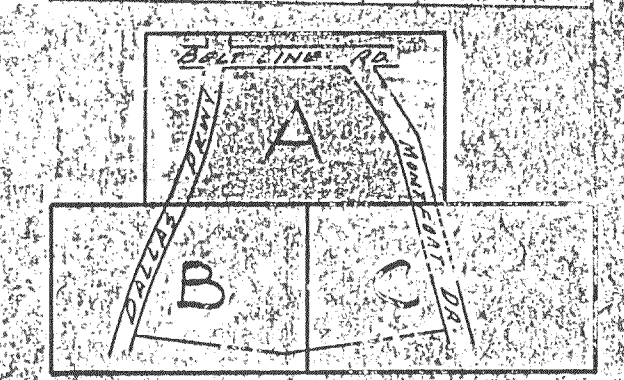


LOT CORNER COORDINATES

#	Y	X
49	1416.196	2697.371
50	1416.196	2899.684
54	1416.196	2272.186
56	1416.196	2008.351
59	1543.196	2309.684
60	1747.419	2309.684
61	1543.196	2583.245
62	1385.925	2724.605



KEY MAP

A-4 CONSTRUCT STD 10 CURB INLET W/ 12" R.C.P. INLET
 TOP: 622.8 ELEV. 618.00 G.S. 183
 12" R.C.P. 1.00' DIA. 1.00' DIA. 1.00' DIA.
 R.O.P. DRAINAGE TO HERE
 A-4 CONSTRUCT STD 10 CURB INLET
 TOP: 623.8 ELEV. 619.00 G.S. 184
 12" R.C.P. 1.00' DIA. 1.00' DIA. 1.00' DIA.

REMOVE EXIST. INLET BOTTOM
 PLUG 21" R.C.P.

E-21 R.C.P.
 21" DIA.
 1.00' DIA.
 1.00' DIA.
 1.00' DIA.

A-10 CONSTRUCT STD 10 CURB INLET
 TOP: 615.00 ELEV. 612.00 G.S. 185
 12" R.C.P. 1.00' DIA. 1.00' DIA. 1.00' DIA.
 CONSTRUCT STD 10 CURB INLET
 TOP: 615.00 ELEV. 612.00 G.S. 185
 12" R.C.P. 1.00' DIA. 1.00' DIA. 1.00' DIA.
 24" R.C.P. 2.00' DIA.
 24" R.C.P. 2.00' DIA.

3" x 3" 30' PIPE CANN.
 3" x 3" 30' PIPE CANN.

A-12 CONSTRUCT STD 10 CURB INLET
 TOP: 617.00 ELEV. 614.00 G.S. 186
 12" R.C.P. 1.00' DIA. 1.00' DIA. 1.00' DIA.

E-20 R.C.P.
 21" DIA.
 1.00' DIA.
 1.00' DIA.
 1.00' DIA.

BENCH MARK: STANDARD WATER DEPT.
 BENCH MARK CENTER INLET,
 NORTHWEST CORNER BELTLINE
 ROAD AND DALLAS PKWY
 ELEV. 632.08

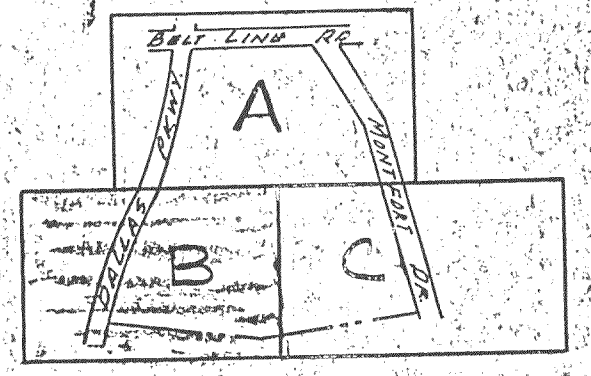
NOTE: REFER TO HORIZONTAL LAYOUT
 & PAVING PLANS FOR EXACT
 LOCATION OF CURB INLETS

1/4/79 REVISED TO CONFORM WITH
 A-C GRADING PLAN

STORM SEWER PLAN
VILLAGE ON THE PARWAY
VILLAGE PARKWAY VENTURE
 ALBERT H. H. ZEE ASSOCIATES, INC., ENGINEERS
 CITY OF ADDISON, TEXAS

DESIGN	DRAWN	DATE	SCALE	NO. OF SHEETS	SHEET NO.
A.H.H. ASSOC.	T.P.	MAY 1978	1" = 40'	6163	

NOTE: FOR 66" R.C.P. RADIUS PIPE USE MAXIMUM BEVEL AD JOINTS



KEY MAP

LOT CORNER COORDINATES

#	Y	X
31	599.786	2448.241
32	716.143	2448.263
33	663.998	1632.055
34	779.394	1644.281
35	873.083	2072.684
36	1074.196	2072.684
37	1074.196	2199.684
38	863.092	2199.684
39	843.534	2448.286
40	845.835	2477.684
41	1074.196	2477.684
42	1074.196	1803.553
43	899.359	1738.696
44	1074.196	2604.684
45	855.777	2604.684
51	1261.196	2399.684
53	1261.196	2272.684
57	1261.196	1873.316
70	780.099	2143.765
71	624.456	2132.667
72	621.240	2175.541
73	736.883	2184.639
77	724.789	2558.702
78	609.142	2567.755
80	727.989	2599.677
81	729.165	2614.596
82	593.200	2610.113
85	733.150	2614.285

NOTE:
REFER TO HORIZONTAL LAYOUT & PAVING PLANS FOR EXACT LOCATION OF CURB INLETS FOR CURB CUT DETAIL SEE PAVING PLANS

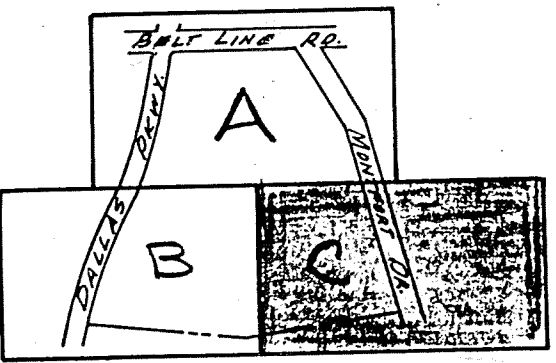
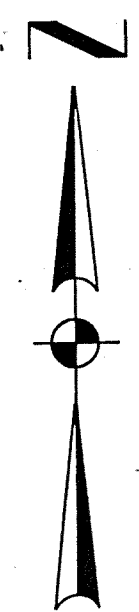
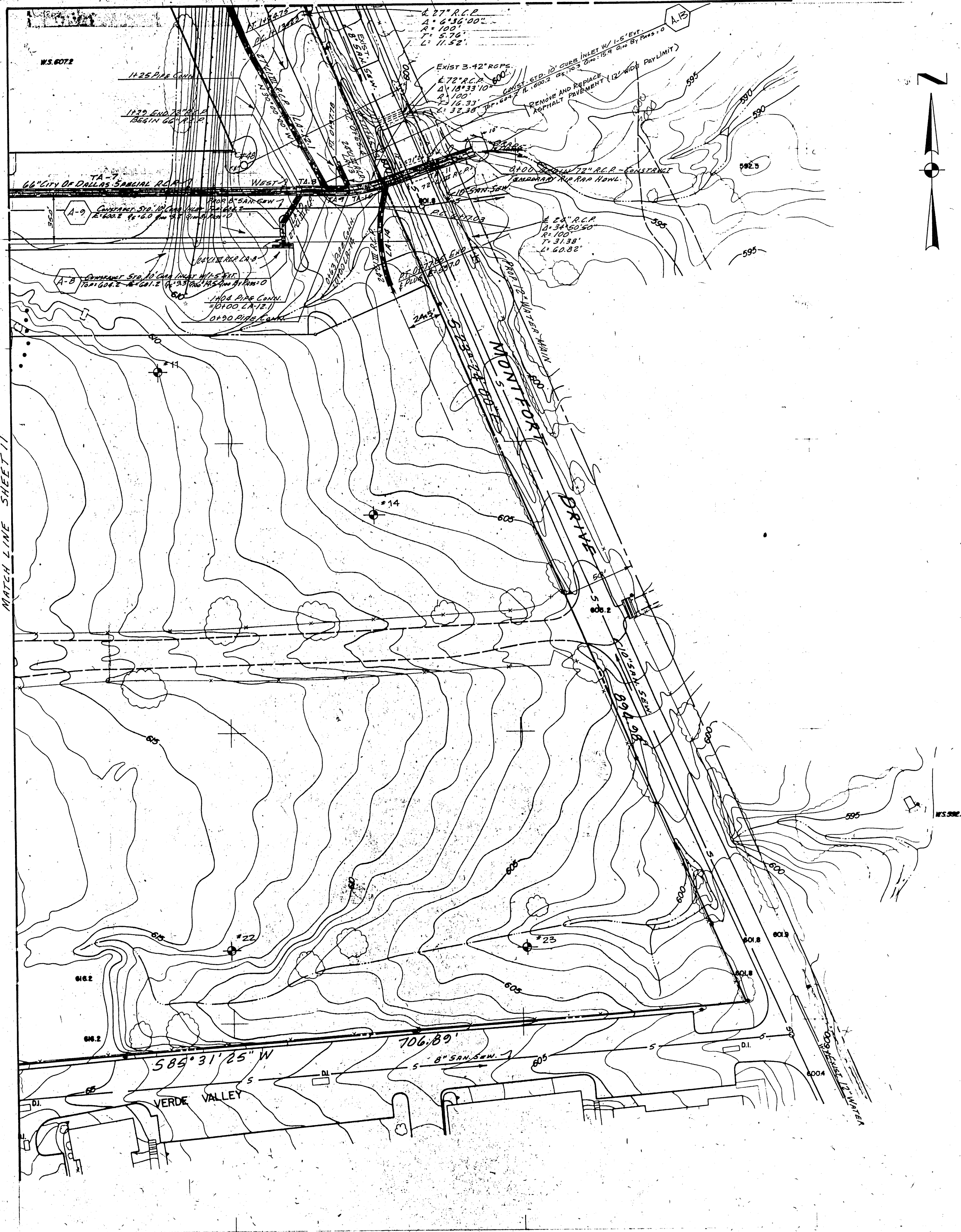
INDICATES SOIL BORING

Added Lot Corners & Islands for 24" Installation

STORM SEWER PLAN
VILLAGE ON THE PARKWAY
VILLAGE PARKWAY VENTURE
 ALBERT H. HALFF ASSOCIATES, INC., ENGINEERS
CITY OF ADDISON, TEXAS

DESIGN	DRAWN	DATE	SCALE	NOTES	FILE	NO.
A.H.H.A. ASSOC.	T.P.	MAY 78	1" = 40'	6143		





KEY MAP

LOT CORNER COORDINATES

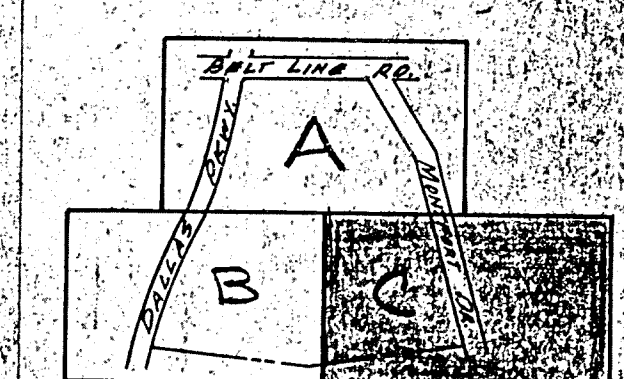
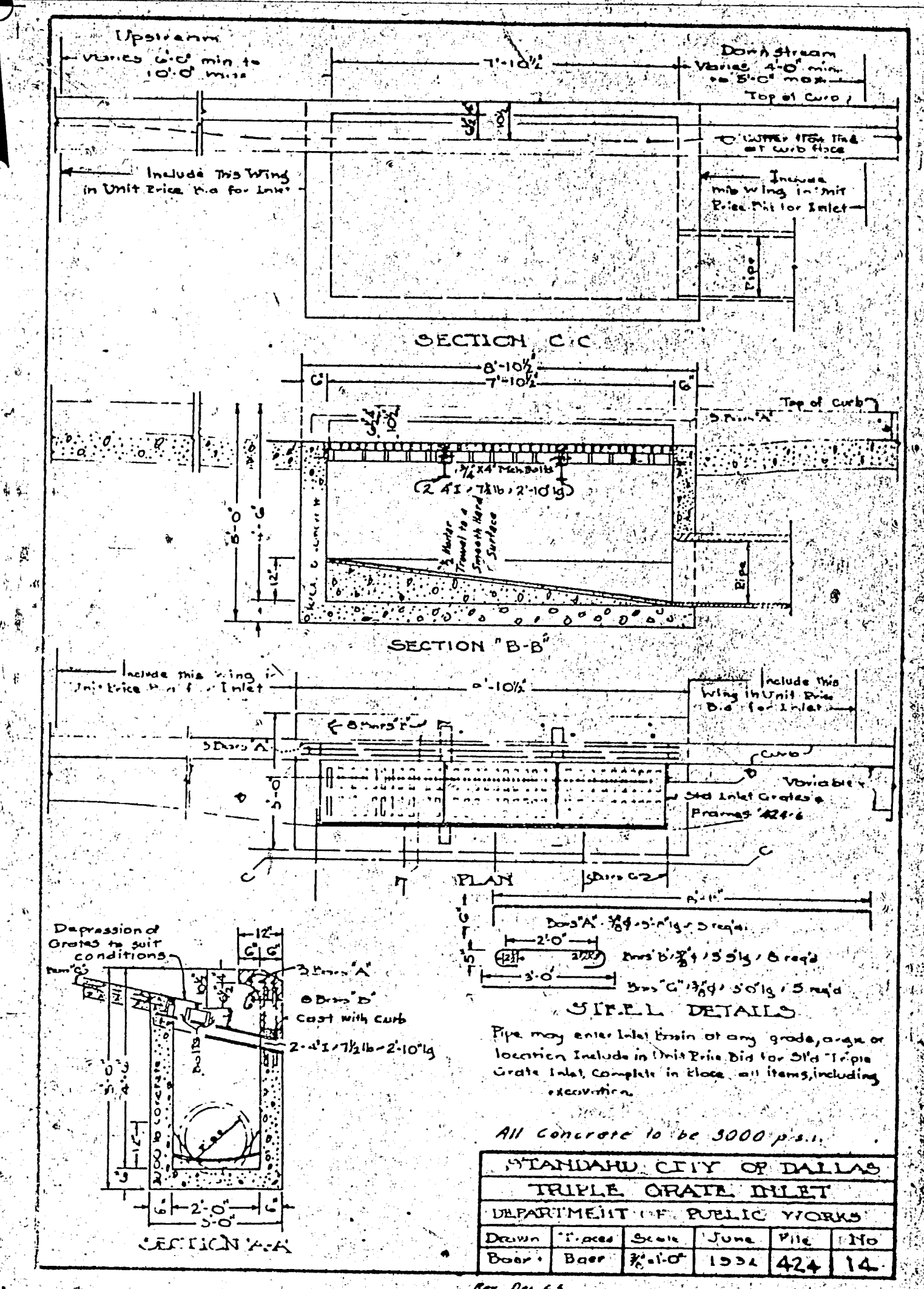
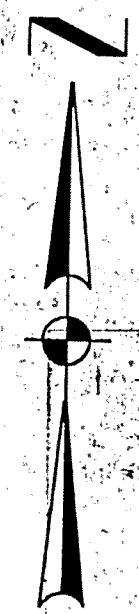
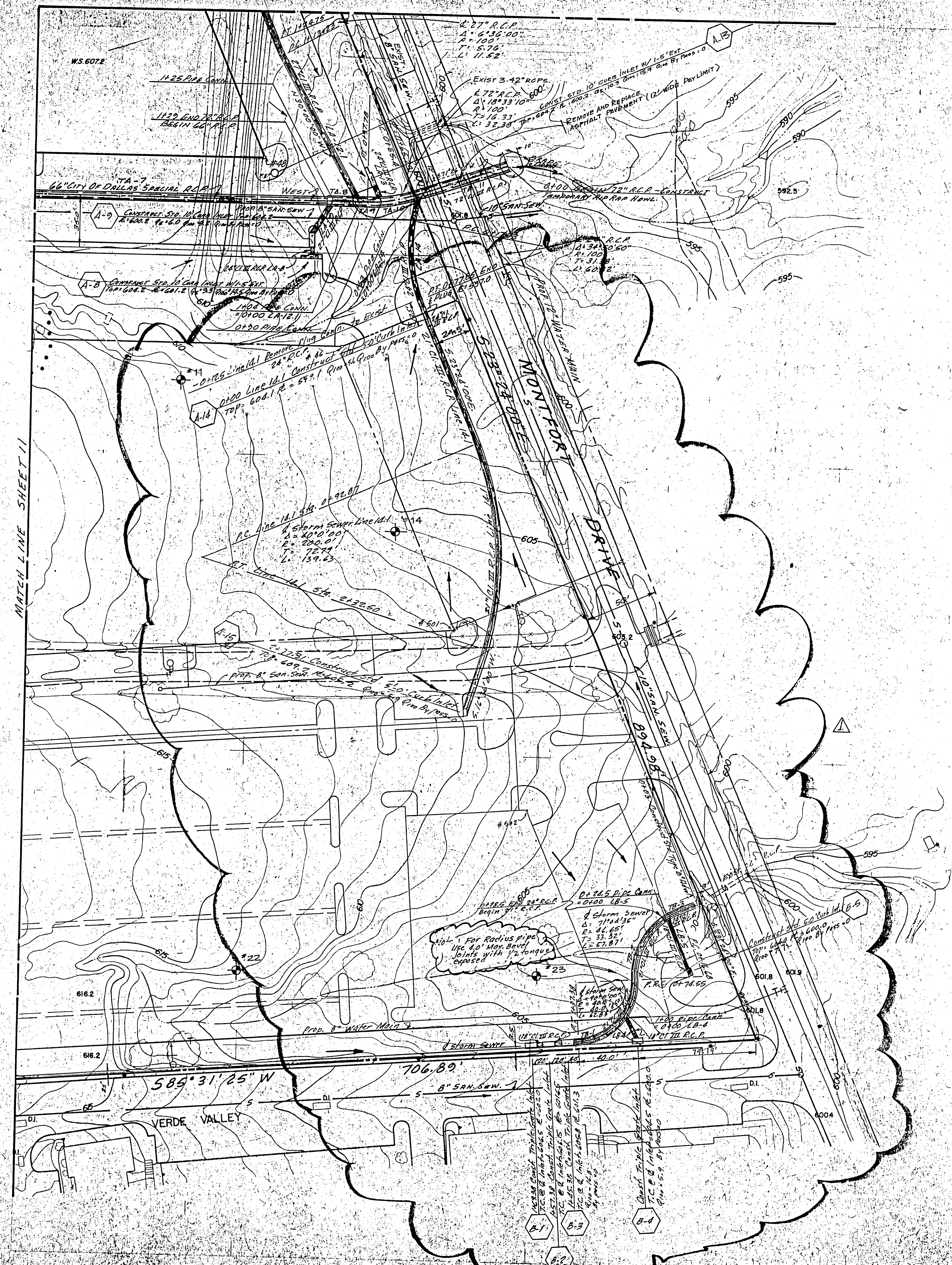
#	Y	X
48	1201.196	2804.543

BENCH MARK :
 STANDARD WATER DEPT. BENCH MARK
 CENTER INLET NORTHWEST CORNER
 BELTLINE ROAD AND DALLAS PKWY.
 ELEV: 632.08

NOTE :
 REFER TO HORIZONTAL LAYOUT &
 PAVING PLANS FOR EXACT LOCATION
 OF CURB INLETS.

⊕ INDICATES SOIL BORINGS

STORM SEWER PLAN						
VILLAGE ON THE PARKWAY						
VILLAGE PARKWAY VENTURE						
ALBERT H. HALFF ASSOCIATES, INC.-ENGINEERS						
CITY OF ADDISON, TEXAS						
DESIGN	DRAWN	DATE	SCALE	NOTES	FILE	NO.
A.H.H. ASSOC.	T.P.	MAY 1978	1" = 40'	6143		



KEY MAP

LOT CORNER COORDINATES

#	Y	X
48	1201.196	2804.543
49	1074.196	2859.507
50	882.230	2922.572
502	762.893	2994.272
503	628.039	3052.677

BENCH MARK:
STANDARD WATER DEPT. BENCH MARK
CENTER INLET NORTHWEST CORNER
BELTLINE ROAD AND DALLAS PKWY.
ELEV: 632.08

NOTE:
REFER TO HORIZONTAL LAYOUT &
PAVING PLANS FOR EXACT LOCATION
OF CURB INLETS.

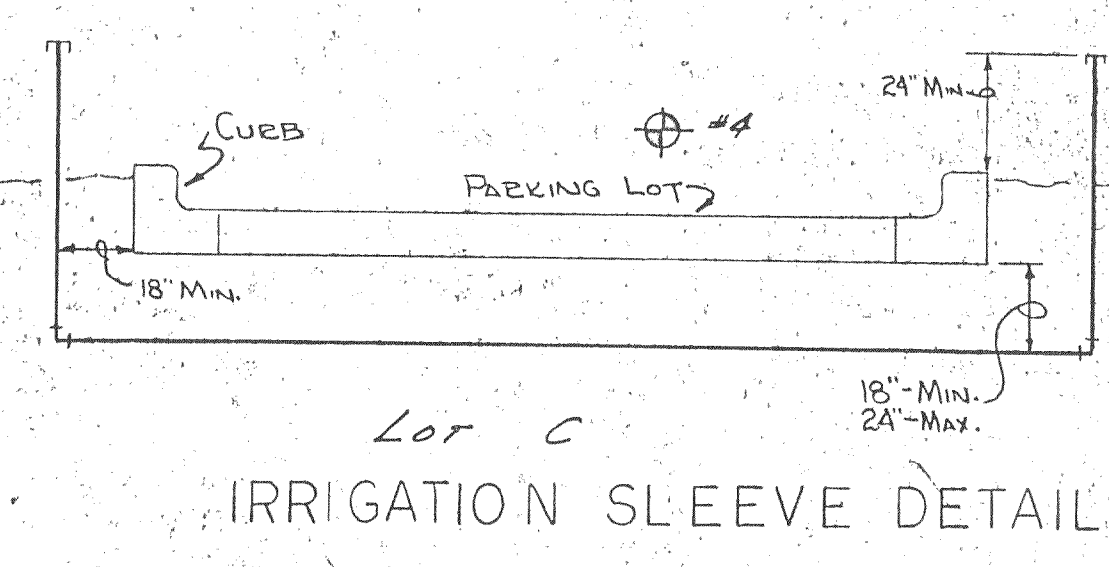
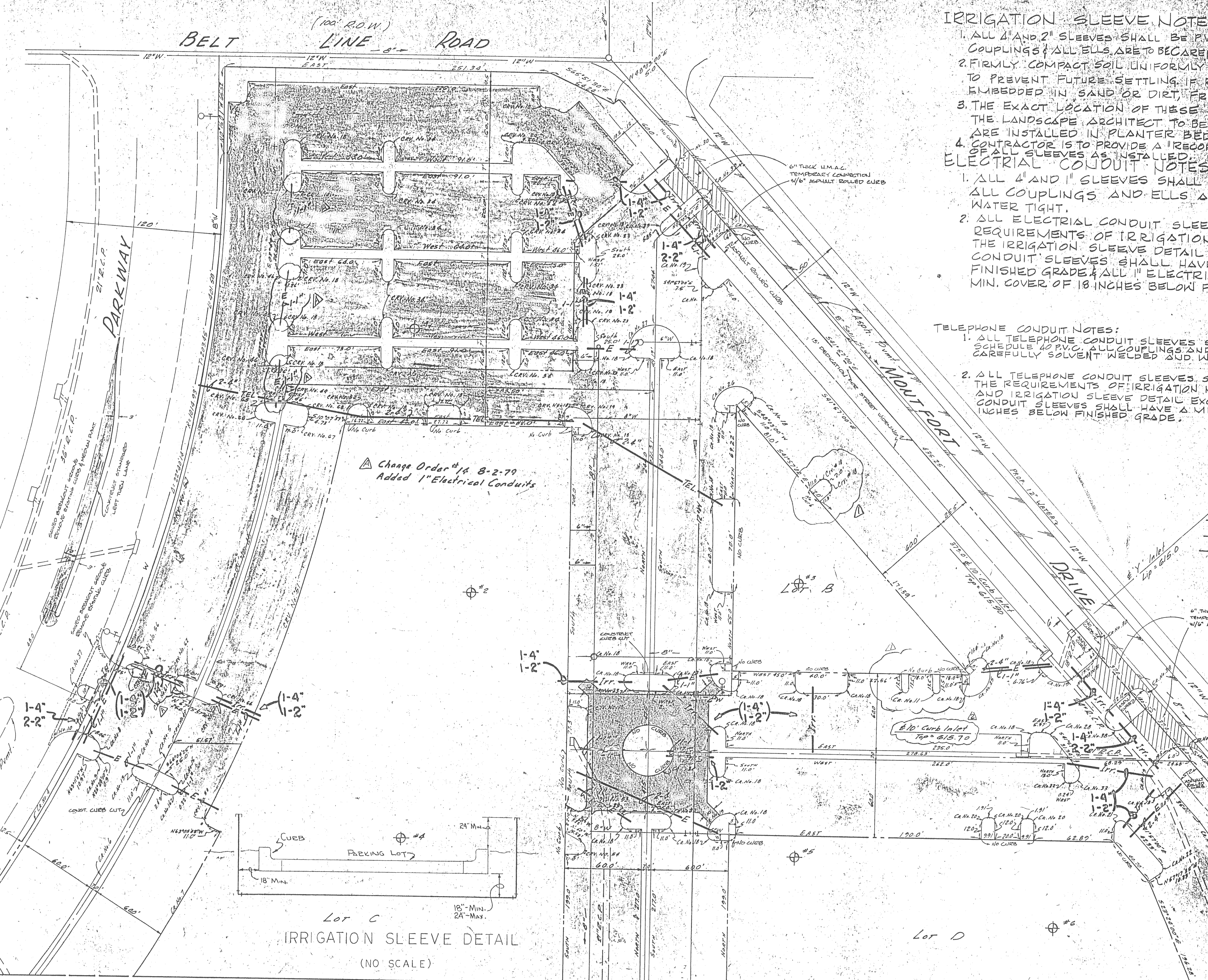
⊕ INDICATES SOIL BORINGS

2.26-79 Storm Sewer for Second Installment

STORM SEWER PLAN						
VILLAGE ON THE PARKWAY						
VILLAGE PARKWAY VENTURE						
ALBERT H. HALFF ASSOCIATES, INC. ENGINEERS						
CITY OF ADDISON, TEXAS						
DESIGN	DRAWN	DATE	SCALE	NOTES	FILE	NO.
A.H.H. ASSOC.	T.P.	MAY 1978	1" = 40'	6143		

Curve No.	Δ	R	T	L
1	00°09'04"	1014.93'	134'	2.68'
2	01°41'33"	1014.93'	150'	30.0'
3	01°41'38"	1014.93'	150'	30.0'
4	10°01'23"	1014.93'	89.0'	177.55'
5	01°19'14"	1080.93'	12.05'	20.91'
6	10°01'26"	1080.93'	94.80'	189.11'
7	09°02'01"	1144.03'	90.41'	180.44'
8	20°33'32"	100'	10.10'	15.81'
9	20°19'43"	5.0'	6.03'	7.85'
10	BUILT TO MATCH EXIST. C.416			
11	180°00'00"	2.5'	—	7.86'
12	113°03'30"	5.0'	7.56'	9.87'
13	89°43'53"	5.0'	4.98'	7.83'
14	89°37'25"	7.0'	6.95'	10.95'
15	90°22'40"	7.0'	7.05'	11.04'
16	90°16'38"	5.0'	5.02'	7.88'
17	66°28'40"	2.5'	1.64'	2.90'
18	90°00'00"	5.0'	5.0'	7.85'
19	90°00'00"	16.0'	16.0'	25.13'
20	90°00'00"	4.0'	4.0'	6.28'
21	138°03'20"	5.0'	13.06'	12.05'
22	99°14'42"	5.0'	5.88'	8.66'
23	90°00'00"	7.0'	7.0'	11.00'
24	360°00'00"	19.5'	—	122.52'
25	131°57'00"	16.0'	35.80'	36.85'
26	138°03'20"	16.0'	41.74'	38.55'
27	180°00'00"	19.5'	—	61.26'
28	41°57'00"	7.0'	2.68'	5.13'
29	41°57'00"	9.0'	3.45'	6.59'
30	90°28'00"	20.0'	20.0'	31.42'
31	18°33'00"	116.5'	19.03'	37.72'
32	90°00'00"	3.0'	3.0'	4.71'
33	138°03'20"	7.0'	18.26'	16.87'
34	180°00'00"	4.0'	—	12.56'
35	90°00'00"	2.5'	2.5'	3.93'
36	113°31'20"	4.0'	6.10'	7.93'
37	180°00'00"	5.0'	—	15.71'
38	180°00'00"	9.0'	—	28.27'
39	180°00'00"	6.0'	—	18.85'
40	63°20'11"	16.0'	9.87'	17.49'

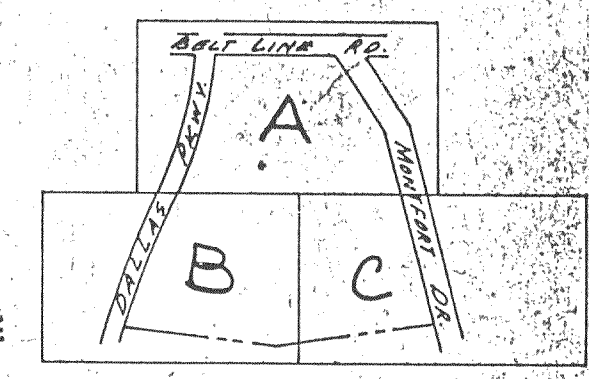
* Note: Curve number refer to curves data for curves on this sheet only. Do not use curve data shown in this table for sheets 15 or 16.



- ### IRRIGATION SLEEVE NOTES:
1. ALL 4" AND 2" SLEEVES SHALL BE PVC PIPE, CLASS 160, SDR 26. ALL COUPLINGS & ALL ELLS ARE TO BE CAREFULLY SOLVENT WELDED AND WATER TIGHT.
 2. FIRMLY COMPACT SOIL UNIFORMLY AROUND PIPE. COMPACT SOIL CAREFULLY TO PREVENT FUTURE SETTLING. IF ROCK IS ENCOUNTERED, ALL PIPING IS TO BE EMBEDDED IN SAND OR DIRT, FREE OF ROCK AND DEBRIS.
 3. THE EXACT LOCATION OF THESE SLEEVES MUST BE CO-ORDINATED WITH THE LANDSCAPE ARCHITECT TO BE SURE THAT THE ENDS OF ALL SLEEVES ARE INSTALLED IN PLANTER BED AREAS.
 4. CONTRACTOR IS TO PROVIDE A "RECORD DRAWING" SHOWING DIMENSIONAL LOCATION OF ALL SLEEVES AS INSTALLED.

- ### ELECTRICAL CONDUIT NOTES:
1. ALL 4" AND 1" SLEEVES SHALL BE SCHEDULE 40 P.V.C.
 2. ALL ELECTRICAL CONDUIT SLEEVES SHALL CONFORM TO THE REQUIREMENTS OF IRRIGATION NOTES 2, 3, & 4 ABOVE ALONG WITH THE IRRIGATION SLEEVE DETAIL EXCEPT THAT ALL 4" ELECTRICAL CONDUIT SLEEVES SHALL HAVE A MIN. COVER OF 42 INCHES BELOW FINISHED GRADE & ALL 1" ELECTRICAL CONDUIT SLEEVES SHALL HAVE A MIN. COVER OF 18 INCHES BELOW FINISHED GRADE.

- ### TELEPHONE CONDUIT NOTES:
1. ALL TELEPHONE CONDUIT SLEEVES SHALL BE 1" DIAM. SCHEDULE 40 P.V.C. ALL COUPLINGS AND ELLS ARE TO BE CAREFULLY SOLVENT WELDED AND WATER TIGHT.
 2. ALL TELEPHONE CONDUIT SLEEVES SHALL CONFORM TO THE REQUIREMENTS OF IRRIGATION NOTES 2, 3, & 4 ABOVE AND IRRIGATION SLEEVE DETAIL EXCEPT THAT ALL TELEPHONE CONDUIT SLEEVES SHALL HAVE A MINIMUM COVER OF 30 INCHES BELOW FINISHED GRADE.



- ### LEGEND
- TEL. TELEPHONE CONDUIT SLEEVE
 - E ELECTRICAL CONDUIT SLEEVE
 - Irr. IRRIGATION CONDUIT SLEEVE

NOTE: THIS DRAWING TO BE USED FOR SLEEVE LOCATIONS ONLY.

- NOTE: ALL DIMENSIONS ARE TO BACK OF CURB.
- ALL CURBS SHALL BE STANDARD OR CONCRETE INTEGRAL CURBS UNLESS OTHERWISE NOTED.
 - BOUNDMATE FINISH
 - HOT MIX ASPHALTIC CONCRETE 1.5" THICK
 - STANDARD REINFORCED CONCRETE PAVEMENT w/ INTEGRAL CURBS
- Change Order #4 1-2-79 Shows relocation of entrance @ south side lot B; Addition of island @ N.E. side lot B.
- Change Order #5 2-16-79 Shows revised elevation for top of inlet on median south of lot B.

Curve No.	Δ	R	T	L
41	41°57'00"	20.0'	7.67'	14.64'
42	131°47'00"	5.0'	11.82'	11.51'
43	86°10'40"	7.0'	6.55'	10.53'
44	93°19'20"	7.0'	7.48'	11.06'
45	82°32'34"	7.0'	6.18'	10.08'
46	97°27'26"	7.0'	7.98'	11.91'
47	02°03'52"	1080.93'	14.48'	38.95'
48	12°40'20"	1080.93'	120.03'	239.07'
49	2°45'09"	1080.93'	7.10'	14.20'
50	89°44'46"	5.0'	4.98'	7.83'

Curve No.	Δ	R	T	L
51	16°47'07"	1128.43'	166.08'	330.58'
52	80°07'27"	10.0'	8.01'	15.78'
53	120°00'00"	5.0'	8.66'	10.47'
54	150°00'00"	5.0'	18.66'	13.09'
55	90°35'16"	10.0'	10.10'	16.81'
56	90°14'43"	5.0'	5.02'	7.88'
57	21°58'05"	1017.43'	197.47'	390.10'
58	89°43'59"	5.0'	4.98'	7.83'
59	47°57'16"	15.54'	6.02'	11.33'
60	89°54'16"	5.0'	4.99'	7.85'

Curve No.	Δ	R	T	L
61	89°35'02"	7.0'	6.95'	10.95'
62	89°43'53"	5.0'	4.98'	7.83'
63	90°21'51"	7.0'	7.04'	—
64	90°16'41"	5.0'	—	—
65	79°38'00"	7.0'	5.84'	9.73'
66	89°43'53"	6.0'	4.98'	7.83'
67	90°30'30"	5.0'	5.04'	7.90'
68	100°07'37"	7.0'	8.36'	12.23'

MATCH LINE SHEET 15

Indicates Soil Boring
Bench Mark: Standard water dept. bench mark center inlet northwest corner Belt Line Rd. and Dallas Parkway
ELEV: 632.08

IRRIGATION, TELEPHONE & ELECTRICAL CONDUIT SLEEVE PLAN

VILLAGE ON THE PARKWAY
VILLAGE PARKWAY VENTURE
Albert H. Wolff Associates, Inc. Engineers

CITY OF ADDISON, TEXAS

DESIGN	DRAWN	DATE	SCALE	NOTES	FILE	NO.
A.H.H. Assoc.	A.H.H.	April 79	1"=40'	6143		

Change Order #13 6-7-79
 Lengthened 2" Electrical Conduit sleeves
 to extend 6' past N. R. Lot E.

Change Order #14 8-2-79
 Added 1" Electrical Conduits
 Change Order #15 10-9-79 Added
 1" ELEC, 2" Tr. & 4" Tr. Lots H & J

Note: All Curbs Shall Be Standard
 6 inch concrete integral curb
 Unless otherwise noted.

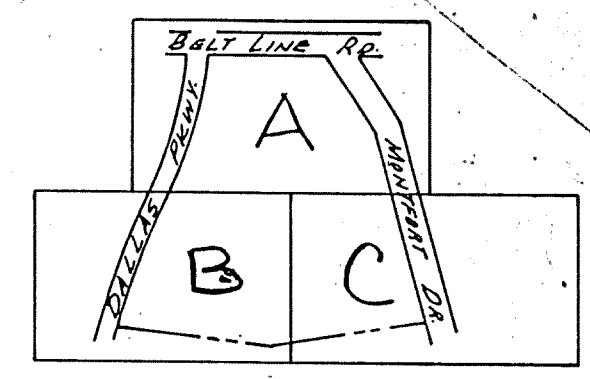
Standard Reinforced Concrete
 Pavement w/ Integral curb.
 Refer to Sheet 14 for special
 Paving Details.

2-28-79 Added Horizontal Layout
 and paving plan for second installment

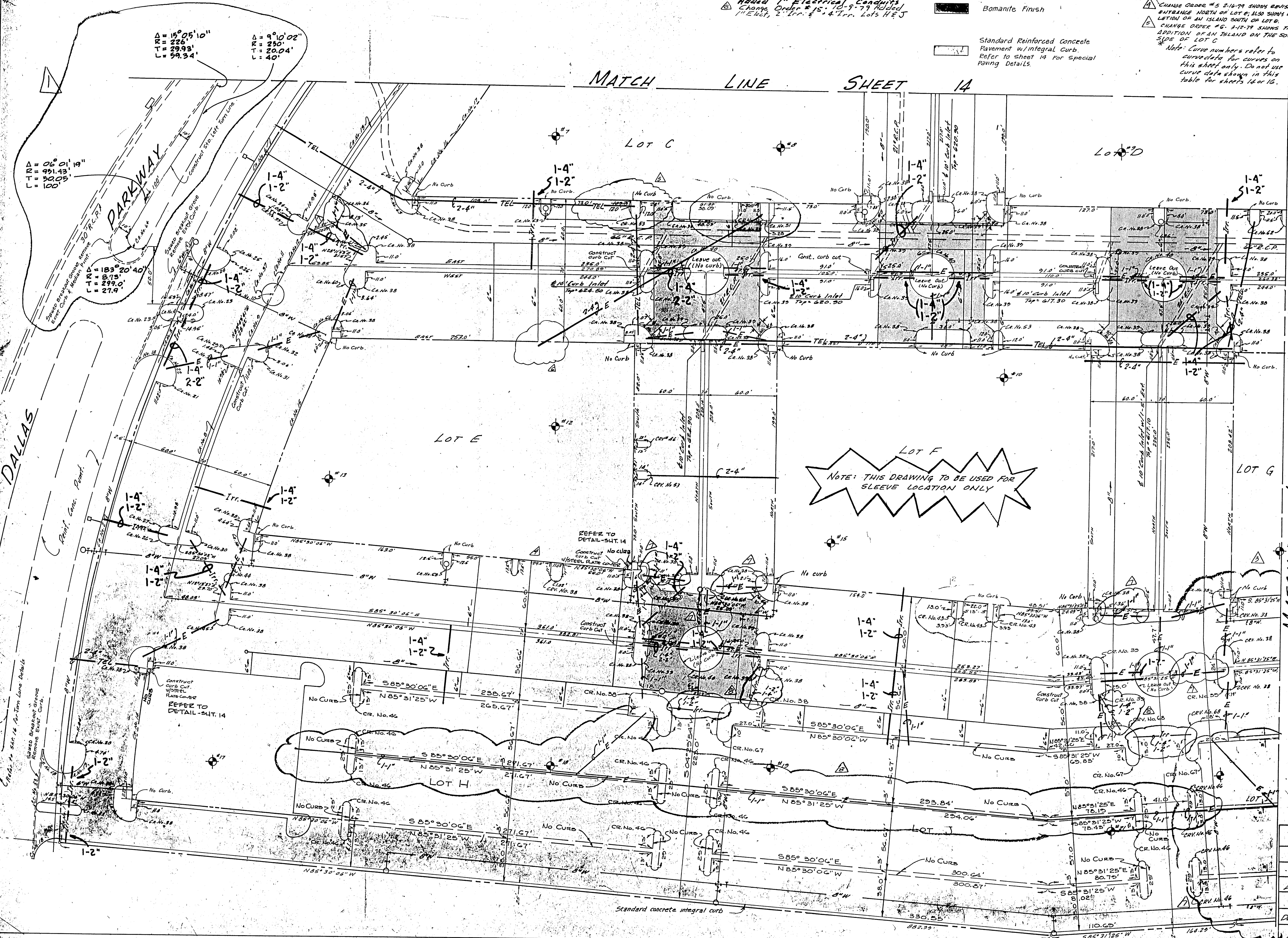
Change Order #5 2-16-79 SHOWS REVISED
 ENTRANCE NORTH OF LOT E, ALSO SHOWS DE-
 LATION OF AN ISLAND SOUTH OF LOT E.

CHANGE ORDER #6 3-12-79 SHOWS THE
 ADDITION OF AN ISLAND ON THE SOUTH
 SIDE OF LOT C

Note: Curve numbers refer to
 CURVE DATA for curves on
 this sheet only. Do not use
 curve data shown in this
 table for sheets 14 or 16.



MATCH LINE SHEET 14



CURVE DATA

Curve No.	Δ	R	T	L
1	02°46'19"	1256.93	30.39	20.77
2	17°21'22"	1256.93	191.85	380.75
3	01°32'05"	1256.93	16.83	33.66
4	00°44'28"	1256.93	8.17	16.34
5	01°36'51"	1256.93	17.71	35.41
6	10°35'23"	1256.93	116.49	233.31
7	03°18'41"	1190.93	24.03	48.04
8	09°01'32"	1190.93	94.00	187.60
9	01°56'47"	1190.93	24.23	48.46
10	02°54'20"	1190.93	9.50	19.00
11	00°56'30"	1190.93	9.70	19.67
12	01°34'38"	1190.93	16.37	32.74
13	07°19'11"	1190.93	76.18	152.35
14	04°47'58"	1194.43	50.05	100.04
15	08°44'37"	1127.43	86.19	172.05
16	02°54'20"	1127.43	28.62	57.11
17	09°02'01"	1144.43	94.41	188.44
18		20.2	MATCH EXISTING	
19	89°10'45"	18.0	17.74	28.02
20	89°33'01"	5.0	4.96	7.82
21	89°46'43"	5.0	4.98	7.84
22	89°10'45"	18.0	17.74	28.02
23	100°00'00"	7.0	7.0	23.56
24	63°52'28"	16.0	9.97	17.84
25	89°46'10"	5.0	4.98	7.83
26	99°47'06"	7.0	8.31	17.19
27	90°14'15"	5.0	5.02	7.88
28	90°14'15"	5.0	5.02	7.88
29	61°15'50"	7.0	4.15	7.99
30	169°39'37"	5.0	55.26	14.81
31	89°36'25"	5.0	4.97	7.82
32	109°28'34"	7.0	12.0	14.60
33	139°03'10"	10.0	26.78	24.22
34	90°14'16"	5.0	5.02	7.87
35	30°34'58"	7.0	2.52	4.84
36	89°46'23"	5.0	4.98	7.83
37	360°00'00"	9.5		59.62
38	90°00'00"	5.0	5.0	7.85
39	90°00'00"	7.0	7.0	11.08
40	360°00'00"	19.5		121.62
41	85°39'54"	16.0	14.83	23.02
42	91°14'06"	16.0	14.35	26.48
43	90°00'00"	3.0	3.0	4.71
44	82°14'37"	2.5	2.18	3.59
45	91°43'33"	6.5	7.34	11.09
46	180°00'00"	3.0		9.42
47	90°28'36"	16.0	17.30	26.38
48	90°00'00"	16.0	16.0	25.13
49	85°31'25"	2.0	1.85	2.99
50	90°28'36"	5.0	5.41	8.25
51	90°00'00"	4.5	4.5	7.07
52	85°31'25"	16.0	14.80	23.88
53	180°00'00"	4.0		12.67
54	90°28'36"	7.0	7.57	11.65
55	85°30'46"	7.0	4.47	12.45
56	64°54'16"	16.0	10.17	18.13
57	102°04'38"	16.0	19.46	28.30
58	180°00'00"	3.5		11.0
59	94°29'58"	16.0	17.31	26.39
60	180°11'03"	10.0	17.78	26.63
61	61°48'07"	10.0	5.99	10.79
62	180°00'00"	4.5		14.14
63	122°27'55"	16.0	29.14	34.20
64		8" E	MATCH EXISTING	
65	180°00'00"	2.5		7.85
66	85°30'06"	16.0	14.79	23.88

MATCH LINE SHEET 16

7/26/78 - Added TURN LANE CURVE DATA

NOTE: ALL DIMENSIONS ARE TO BACK OF CURB

10/30/78 REVISED SERVICE DRIVE DIMENSIONS SOUTH SIDE OF C&F

Bench Mark: Standard water dept. bench mark center inlet northwest corner Ball Line Road and Dallas Hwy. ELEV.: 632.08

Indicates Soil Boring

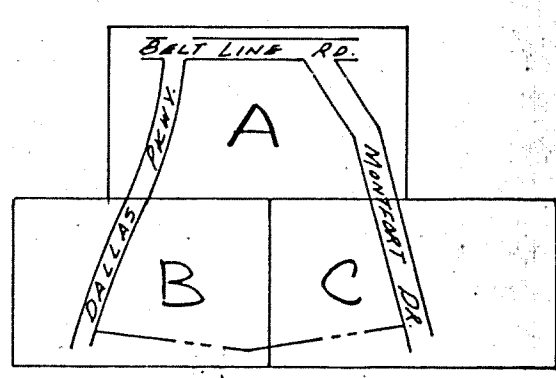
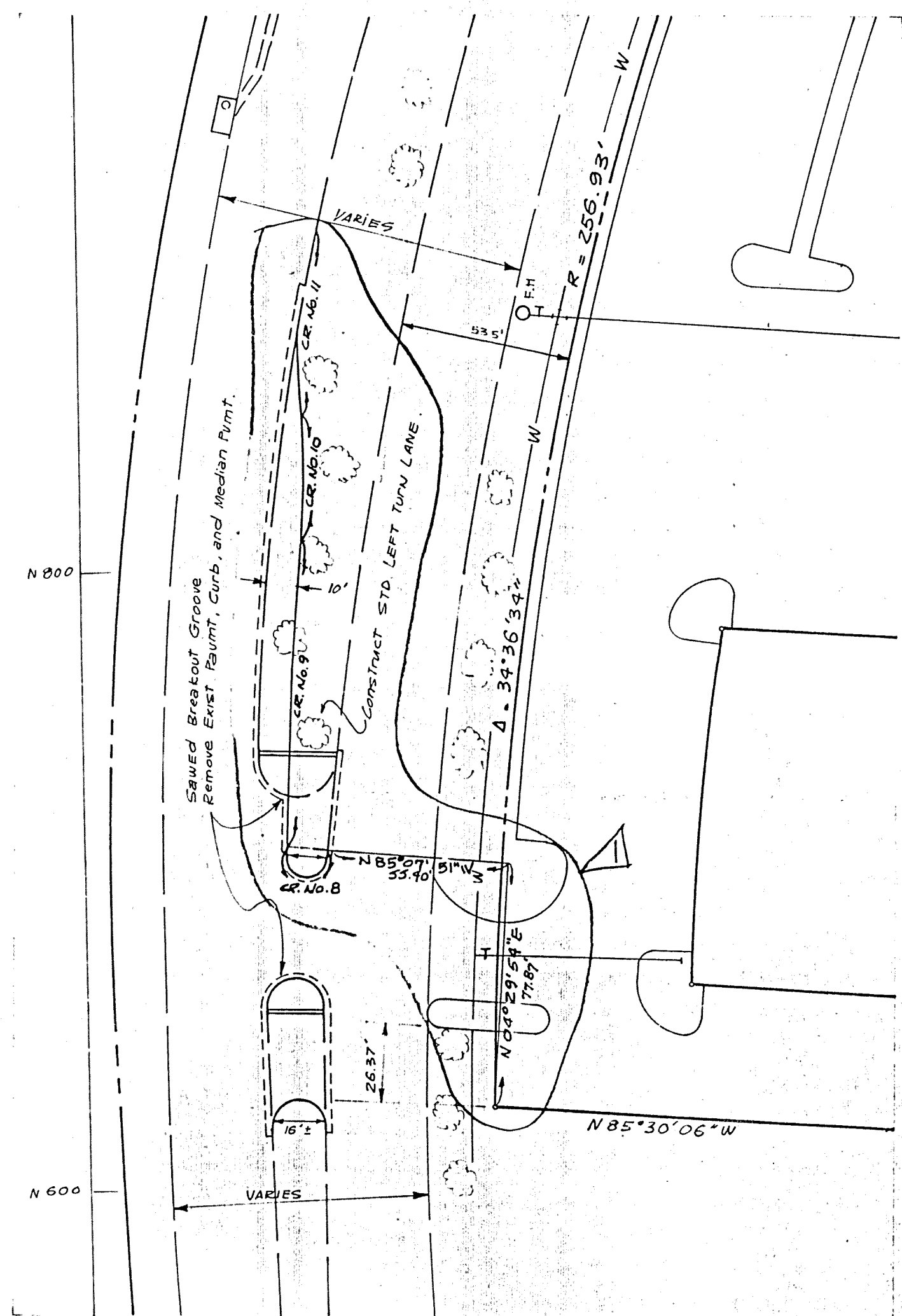
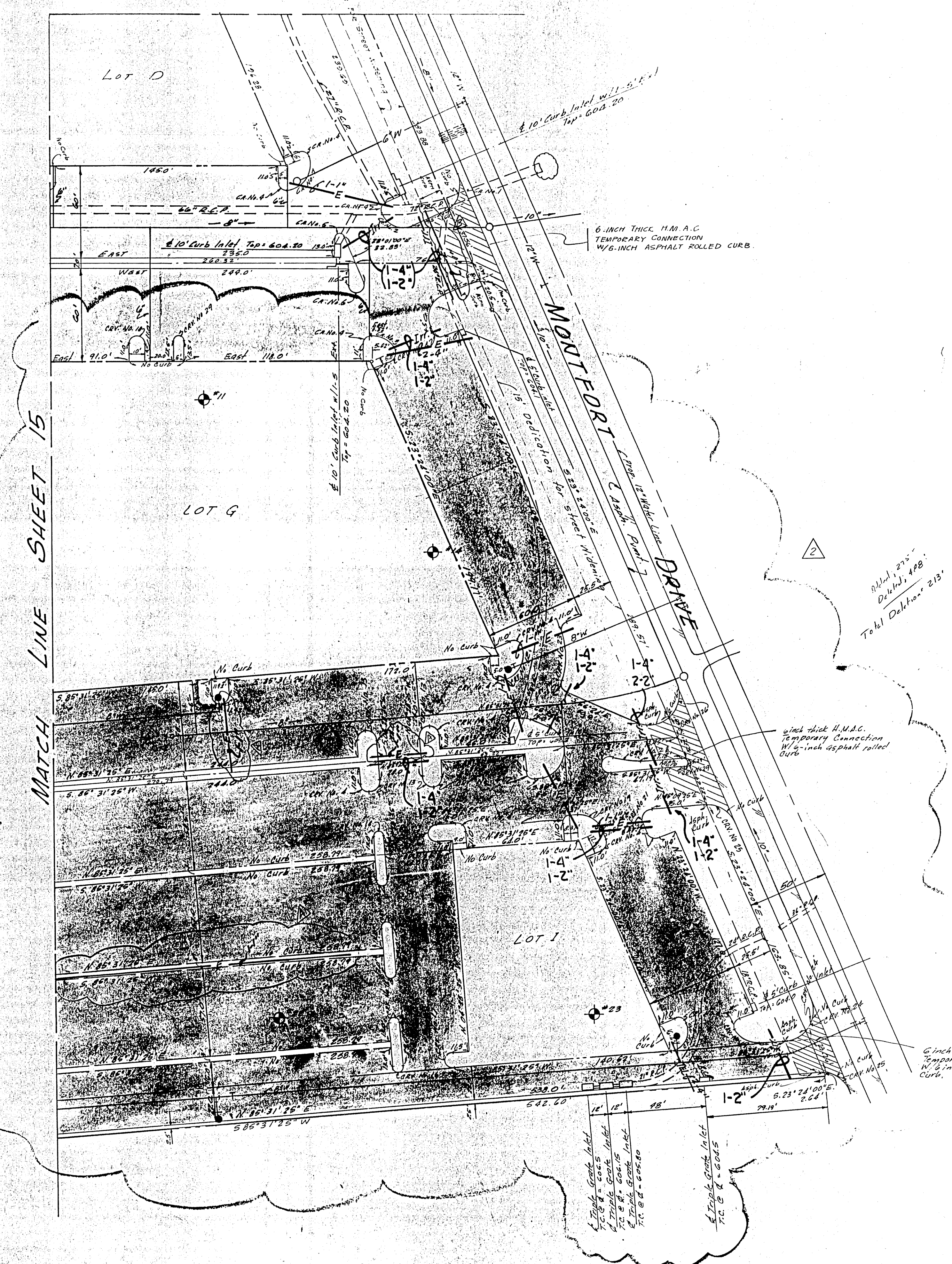
IRRIGATION, TELEPHONE & ELECTRICAL CONDUIT SLEEVE PLAN

VILLAGE ON THE PARKWAY
 VILLAGE PARKWAY VENTURE
 Albert H. Wolff Associates, Inc. - Engineers
 CITY OF ADDISON, TEXAS

DESIGN	DRAWN	DATE	SCALE	NOTES	FILE	NO.
A.M.H.	A.N.H.	April 79	1"=40'	6163		

Curve No.	Stationing	Radius	Length	Chord	Offset
1	200+00.00	200.0'	31.42'	31.42'	0.00'
2	200+00.00	100.0'	15.71'	15.71'	0.00'
3	200+00.00	50.0'	7.85'	7.85'	0.00'
4	200+00.00	25.0'	3.93'	3.93'	0.00'
5	200+00.00	12.5'	1.96'	1.96'	0.00'
6	200+00.00	6.25'	0.98'	0.98'	0.00'
7	200+00.00	3.125'	0.49'	0.49'	0.00'
8	200+00.00	1.5625'	0.24'	0.24'	0.00'
9	200+00.00	0.78125'	0.12'	0.12'	0.00'
10	200+00.00	0.390625'	0.06'	0.06'	0.00'
11	200+00.00	0.1953125'	0.03'	0.03'	0.00'
12	200+00.00	0.09765625'	0.015'	0.015'	0.00'
13	200+00.00	0.048828125'	0.0075'	0.0075'	0.00'
14	200+00.00	0.0244140625'	0.00375'	0.00375'	0.00'
15	200+00.00	0.01220703125'	0.001875'	0.001875'	0.00'
16	200+00.00	0.006103515625'	0.0009375'	0.0009375'	0.00'
17	200+00.00	0.0030517578125'	0.00046875'	0.00046875'	0.00'
18	200+00.00	0.00152587890625'	0.000234375'	0.000234375'	0.00'
19	200+00.00	0.000762939453125'	0.0001171875'	0.0001171875'	0.00'
20	200+00.00	0.0003814697265625'	0.00005859375'	0.00005859375'	0.00'
21	200+00.00	0.00019073486328125'	0.000029296875'	0.000029296875'	0.00'
22	200+00.00	0.000095367431640625'	0.0000146484375'	0.0000146484375'	0.00'
23	200+00.00	0.0000476837158203125'	0.00000732421875'	0.00000732421875'	0.00'
24	200+00.00	0.00002384185791015625'	0.000003662109375'	0.000003662109375'	0.00'
25	200+00.00	0.000011920928955078125'	0.0000018310546875'	0.0000018310546875'	0.00'
26	200+00.00	0.0000059604644775390625'	0.00000091552734375'	0.00000091552734375'	0.00'
27	200+00.00	0.00000298023223876953125'	0.000000457763671875'	0.000000457763671875'	0.00'
28	200+00.00	0.000001490116119384765625'	0.0000002288818359375'	0.0000002288818359375'	0.00'
29	200+00.00	0.0000007450580596923828125'	0.00000011444091796875'	0.00000011444091796875'	0.00'

* Note: Curve numbers refer to curve data for curves on this sheet only. Do not use curve data shown in this table for sheets 14 or 15



HOT MIX ASPHALT CONCRETE - 4" THICK
STANDARD REINFORCED CONCRETE PAVEMENT W/ INTEGRAL CURB

LEFT TURN LANE DETAILS @ SOUTHWEST ENTRANCE

Change Order #14; 8-2-79 Added 1" Electrical Conduits
Change Order #15; Added 1" Elect Conduit North Entrance @ Montfort

NOTE: THIS DRAWING TO BE USED FOR SLEEVE LOCATION ONLY.
ALL DIMENSIONS ARE TO BACK OF CURB
Indicates Soil Boring

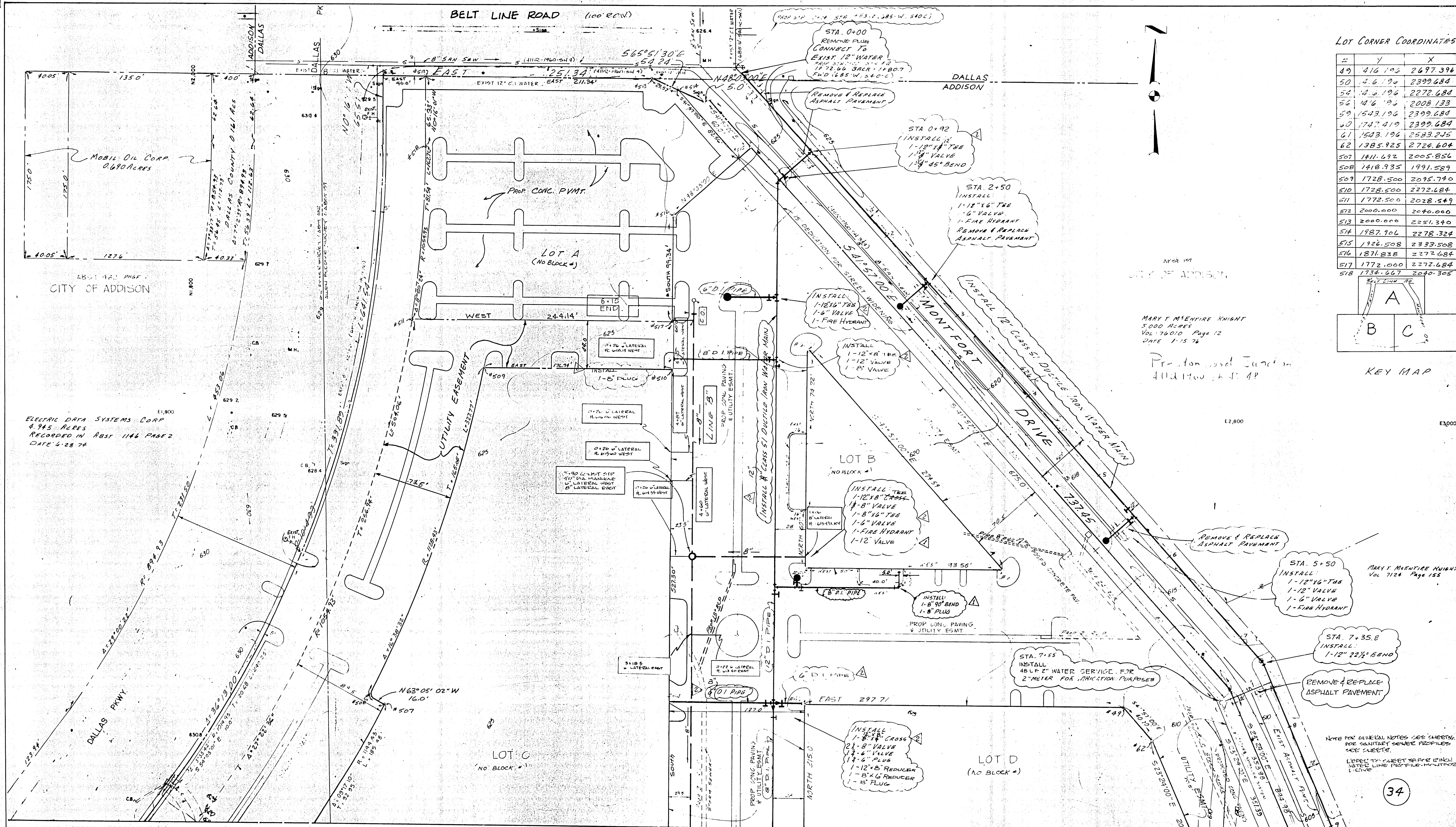
2/28/79 Added Horizontal Layout & Paving plan for second installation.

7/26/78 Added TURN LANE CURVE DATA

Bench Mark: Standard water dept. bench mark center Inlet northwest corner Bellline Road and Dallas Pkwy.
ELEV: 632.08
Note: All curbs shall be standard 6-inch concrete integral curb unless otherwise noted.

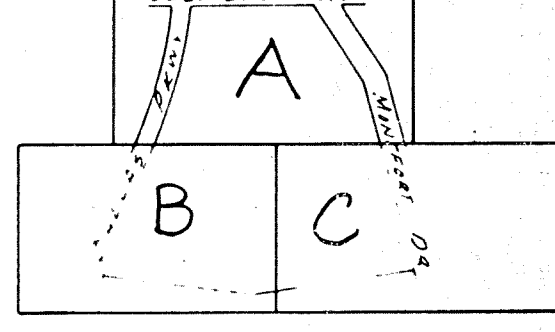
IRRIGATION, TELEPHONE & ELECTRICAL CONDUIT SLEEVE PLAN						
VILLAGE ON THE PARKWAY						
VILLAGE PARKWAY VENTURE						
Albert H. Holt Associates, Inc. - Engineers						
CITY OF ADDISON, TEXAS						
DESIGN	DRAWN	DATE	SCALE	NOTES	FILE	No.
A.H.H.	A.H.H.	April 79	1"=20'	6183		

22
REV. 4-107



LOT CORNER COORDINATES

#	Y	X
49	416.196	2697.396
50	416.196	2399.684
54	416.196	2272.684
56	416.196	2008.133
59	1543.196	2399.684
60	1747.419	2399.684
61	1543.196	2583.235
62	1385.925	2724.604
507	1411.692	2005.854
508	1418.935	1991.589
509	1728.500	2095.740
510	1728.500	2272.684
511	1772.500	2028.549
512	2000.000	2040.000
513	2000.000	2251.340
514	1987.906	2278.324
515	1728.508	2333.508
516	1871.838	2272.684
517	1772.000	2272.684
518	1734.667	2040.305



KEY MAP

MARY T. McENTIRE KNIGHT
5,000 ACRES
VOL. 76,010 Page 12
DATE 1-15-76

Project and Location
4112 1400 - 4-1-AP

MARY T. McENTIRE KNIGHT
Vol. 7124 Page 155

NOTE FOR GENERAL NOTES - SEE SHEETS FOR SANITARY SEWER PROFILES SEE SHEETS.
REFER TO SHEET 34 FOR UTILITY LINE PROFILES - MULTIPLES L-CIVE

34

ELECTRIC DATA SYSTEMS CORP
4.945 ACRES
RECORDED IN ABST 1146 PAGE 2
DATE 6-28-74

6" 15" STORM SEWER E6MT
A. 21'44" 56'
R. 91.0'
T. 15.56'
L. 90.75'

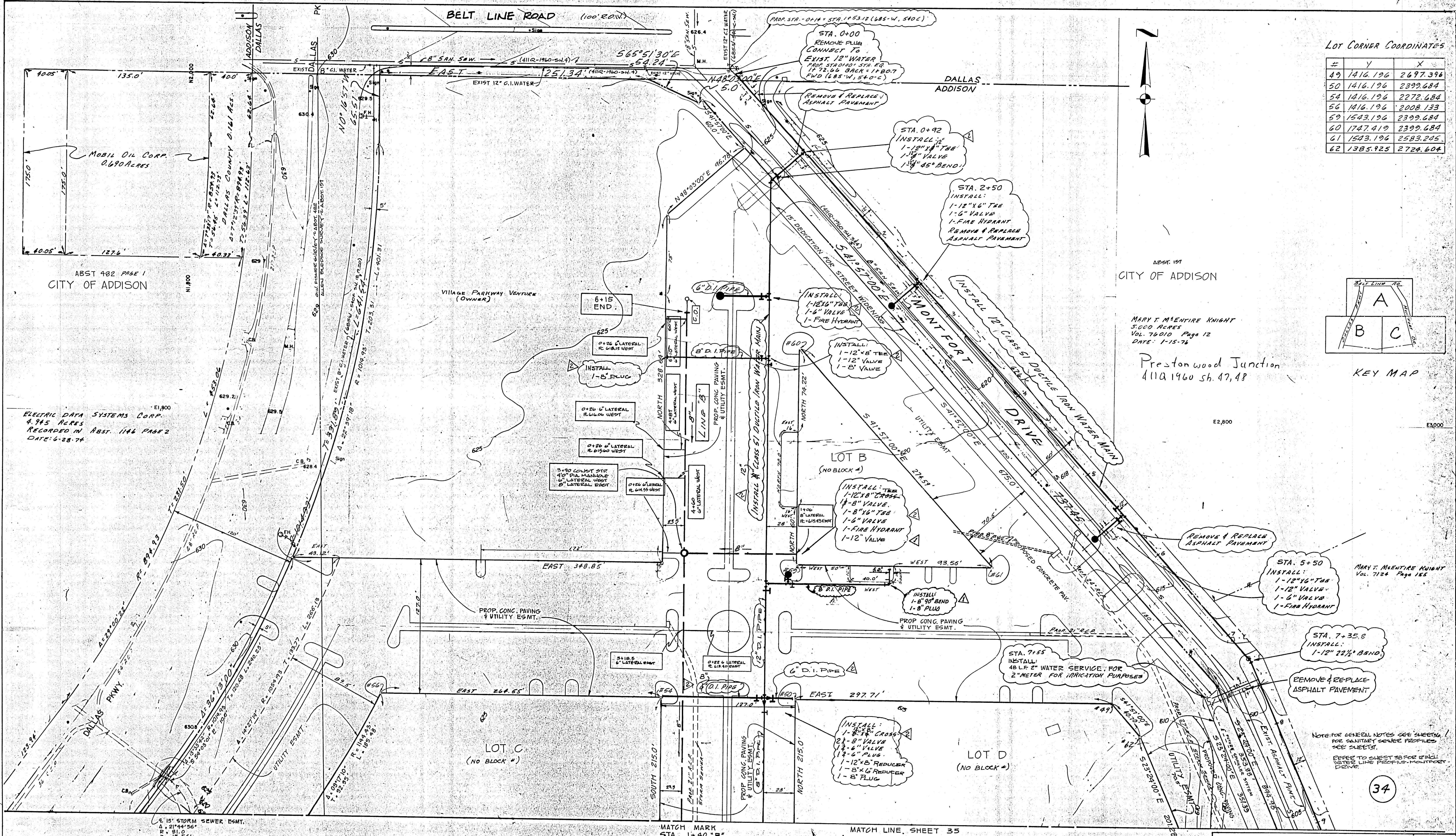
BENCHMARK: STANDARD WATER DEPT. BENCHMARK
CENTER INLET NORTHWEST CORNER
BELT LINE ROAD AND DALLAS PKWY.
ELEV: 632.08

LOCATION: VILLAGE ON THE PARKWAY (CHANGE ORDER NO. 2)
DESIGNED: ALBERT H. HALFF ASSOCIATES INC. & ENGINEERS
DATE: 1-19-79
R.O.V. APPROVED: [Signature]
ENGINEER OF DESIGN: DALLAS WATER UTILITIES DEPT.
CONTRACT NO. 78-2619, 78-2622 STIMSON - SEPT 25, 1978

LOCATION: VILLAGE ON THE PARKWAY - PHASE I
DESIGNED: ALBERT H. HALFF ASSOCIATES INC. & ENGINEERS
DATE: 10-17-78
R.O.V. APPROVED: [Signature]
ENGINEER OF DESIGN: DALLAS WATER UTILITIES DEPT.
CONTRACT NO. 78-2619, 78-2622 STIMSON - SEPT 25, 1978

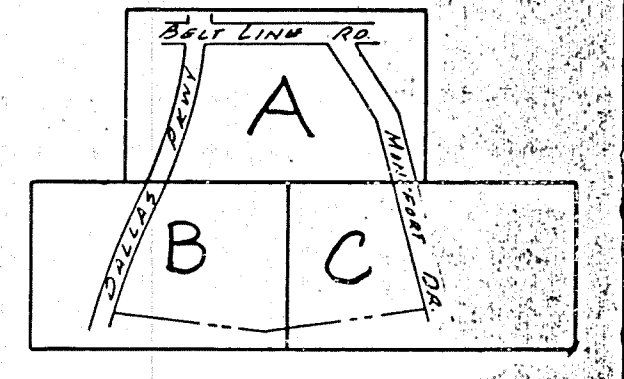
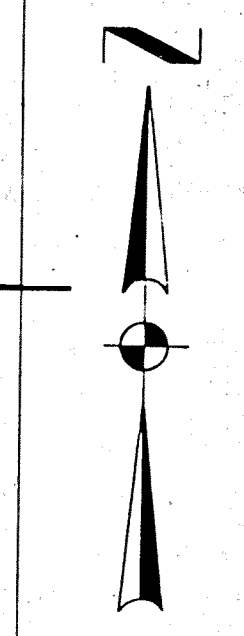
WATER & SANITARY SEWER PLANS						
VILLAGE ON THE PARKWAY						
VILLAGE PARKWAY VENTURE						
ALBERT H. HALFF ASSOCIATES, INC. - ENGINEERS						
CITY OF ADDISON, TEXAS						
DESIGN	DRAWN	DATE	SCALE	NOTES	FILE	NO.
AHH	T.P.	MAY 1978	1"=50'	6143	4110	1960

REVISOR: 1/31/79 CHANGED 8" WATER MAIN TO 12" MAIN BETWEEN LOT B & A-C, CHANGED FIRE HYDRANT AND SERVICE LINE LOCATIONS.
REVISOR: AS PER CHANGE ORDER #1 (1/1/79) (MOVED 8" WATER SERVICE FOR LOT B 85' EAST)



LOT CORNER COORDINATES

#	Y	X
49	1416.196	2697.396
50	1416.196	2399.684
54	1416.196	2272.684
56	1416.196	2008.133
59	1543.196	2399.684
60	1747.419	2399.684
61	1543.196	2583.205
62	1385.925	2724.604



KEY MAP

ABST. 197
CITY OF ADDISON

MARY T. McENTIRE KNIGHT
5,000 ACRES
VOL. 76010 Page 12
DATE: 1-15-76

Prestonwood Junction
411A 1960 Sh. 47, 48

E2,800

MARY T. McENTIRE KNIGHT
Vol. 7124 Page 155

STA. 5+50
INSTALL:
1-12" 45° TEE
1-12" VALVE
1-6" VALVE
1-FIRE HYDRANT

STA. 7+35.8
INSTALL:
1-12" 22 1/2° BEND

Note: FOR GENERAL NOTES SEE SHEETS
FOR SANITARY SEWER PROFILES
SEE SHEETS
REFER TO SHEET 20 FOR WIND
WATER LINE PROFILES - MONTFORT DRIVE

34

ELECTRIC DATA SYSTEMS CORP.
4.945 ACRES
RECORDED IN ABST. 1146 PAGE 2
DATE: 6-28-74

ABST 482 PAGE 1
CITY OF ADDISON

Village Parkway Venture
(Owner)

LOT B
(NO BLOCK #)

LOT C
(NO BLOCK #)

LOT D
(NO BLOCK #)

MATCH MARK
STA. 1+40 "B"

MATCH LINE, SHEET 35

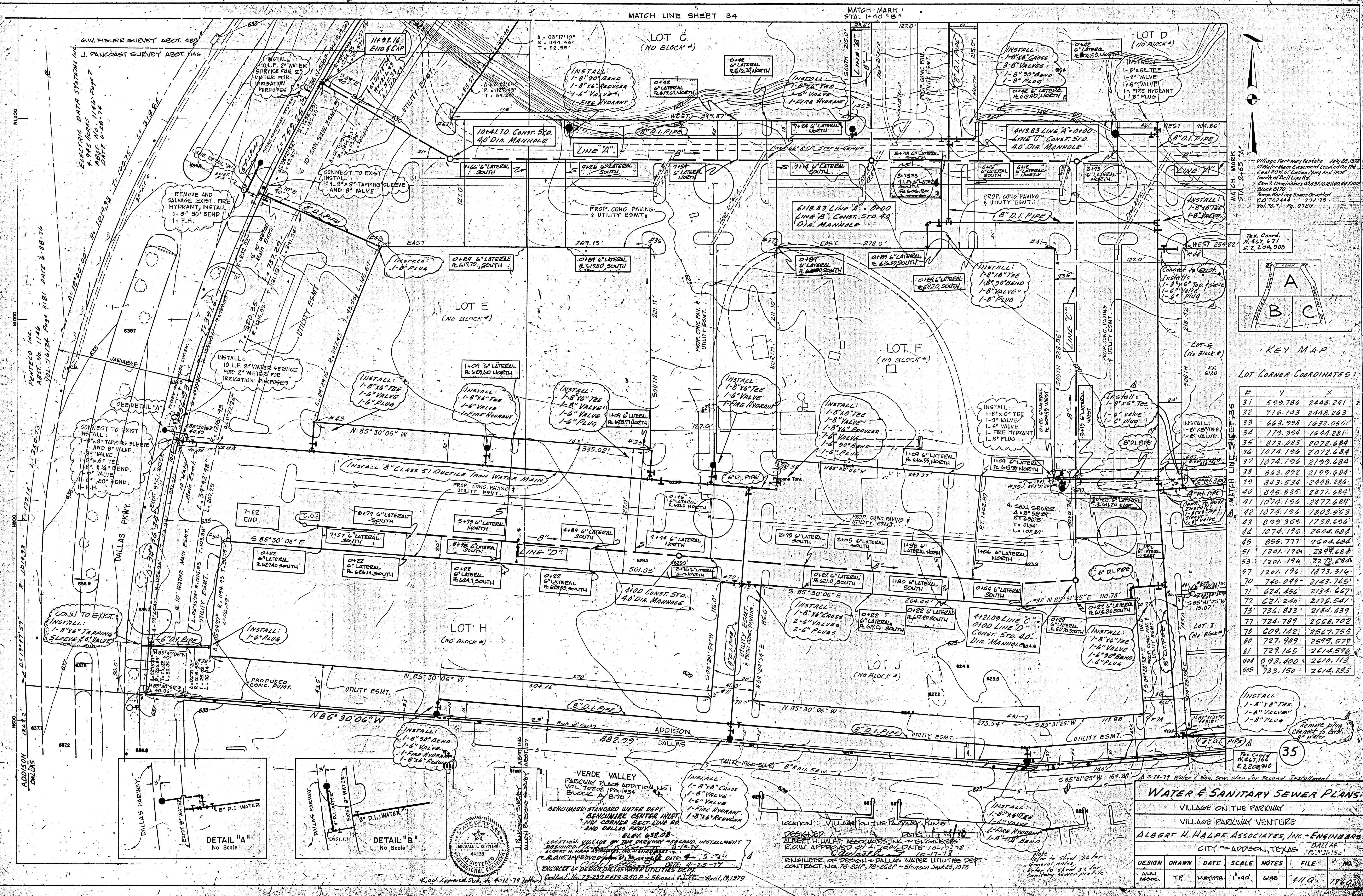
LOCATION: VILLAGE ON THE PARKWAY (CHANGE ORDER NO. 1)
DESIGNED: ALBERT H. HALFF ASSOCIATES, INC. ENGINEERS
DATE: 11-1-77
R.O.V. APPROVED: [Signature] 1-19-79
ENGINEER OF DESIGN: DALLAS WATER UTILITIES DEPT.
CONTRACT NO. 78-261P, 78-262P STIMMONS SEPT 25, 1978

LOCATION: VILLAGE ON THE PARKWAY + PHASE I
DESIGNED: ALBERT H. HALFF ASSOCIATES, INC. ENGINEERS
DATE: 10-17-78
R.O.V. APPROVED: [Signature] 10-17-78
ENGINEER OF DESIGN: DALLAS WATER UTILITIES DEPT.
CONTRACT NO. 78-261P, 78-262P STIMMONS SEPT 25, 1978

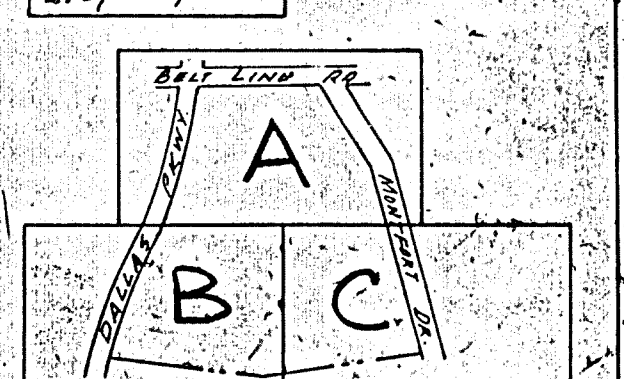
LOCATION: VILLAGE ON THE PARKWAY + PHASE I
DESIGNED: ALBERT H. HALFF ASSOCIATES, INC. ENGINEERS
DATE: 11-1-77
R.O.V. APPROVED: [Signature] 1-19-79
ENGINEER OF DESIGN: DALLAS WATER UTILITIES DEPT.
CONTRACT NO. 78-261P, 78-262P STIMMONS SEPT 25, 1978

WATER & SANITARY SEWER PLANS						
VILLAGE ON THE PARKWAY						
VILLAGE PARKWAY VENTURE						
ALBERT H. HALFF ASSOCIATES, INC. ENGINEERS						
CITY OF ADDISON, TEXAS						
DESIGN	DRAWN	DATE	SCALE	NOTES	FILE	NO.
ALH	T.R.	MAY 1978	1"=40'	6143	6110	1960

REVISED 1/31/79 CHANGED B WATER MAIN TO 12" MAIN BETWEEN LOT B & A-C, CHANGED FIRE HYDRANT AND SERVICE LINE LOCATIONS.
REVISED AS PER CHANGE ORDER #1 (1/11/79).
(MOVED B WATER SERVICE FOR LOT B 85' EAST)

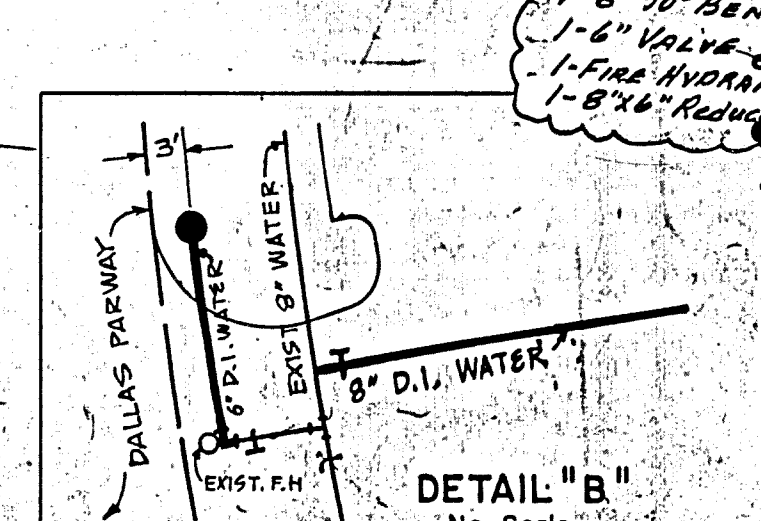
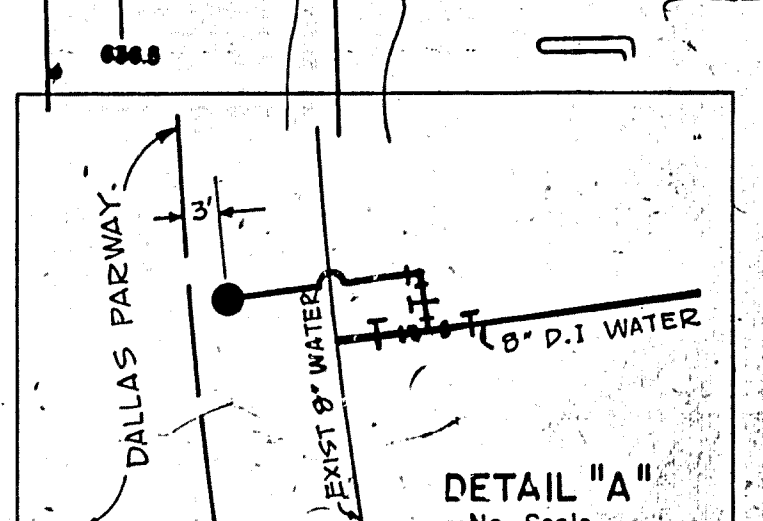


Village Parkway Venture July 28, 1978
 10 Miles Main Extension of Local, The
 East of Ball Line Rd.
 South of Ball Line Rd.
 Camp 1, Dominions of DALLAS COUNTY
 7504170
 Kemp, Working Space Granted
 C.O. 752444 9-12-78
 Vol. 76-1 Pg. 0720



LOT CORNER COORDINATES

#	Y	X
31	599.786	2448.241
32	716.143	2448.263
33	663.998	1832.053
34	779.304	1844.281
35	873.083	2072.684
36	1074.196	2072.684
37	1074.196	2199.684
38	863.092	2199.684
39	843.534	2448.284
40	845.835	2477.684
41	1074.196	2477.684
42	1074.196	1803.553
43	899.359	1738.696
44	1074.196	2604.684
45	855.777	2604.684
51	1201.194	2399.684
53	1201.196	2272.684
57	1201.196	1873.314
70	740.099	2143.765
71	624.466	2134.667
72	621.240	2175.541
73	736.883	2184.639
77	724.789	2558.702
78	609.182	2567.765
80	727.989	2599.579
81	729.165	2614.596
84	593.400	2610.113
545	733.150	2614.285



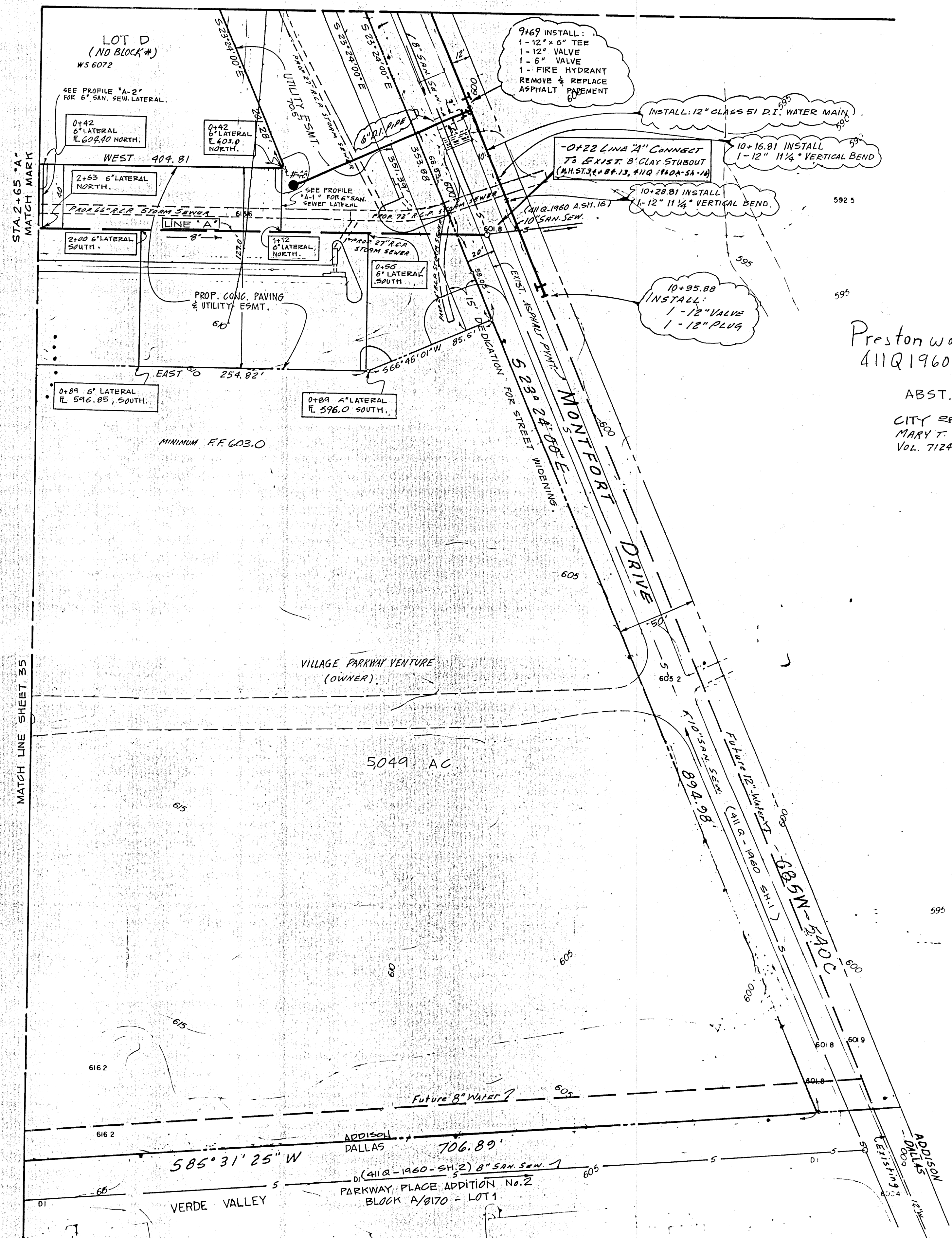
VERDE VALLEY
 PARKWAY PLACE ADDITION NO. 1
 VOL. 70202 (P. 1934)
 BLOCK A BMD
 BENCHMARK: STANDARD WATER DEPT.
 BENCHMARK CENTER POINT
 MAIN CORNER SET LINE RA
 AND DALLAS PARKWAY
 ELEV. 658.08
 LOCATION: VILLAGE ON THE PARKWAY - SECOND INSTALLMENT
 DESIGNED BY ALBERT H. HALFF ASSOCIATES, INC. DATE: 10-17-78
 R.O.W. APPROVED BY DALLAS WATER UTILITIES DEPT. DATE: 10-17-78
 ENGINEER OF DESIGN: DALLAS WATER UTILITIES DEPT.
 CONTRACT NO. 78-2319, 78-2622 - Shimsion Jan. 25, 1978

DESIGNED BY ALBERT H. HALFF ASSOCIATES, INC. DATE: 10-17-78
 R.O.W. APPROVED BY DALLAS WATER UTILITIES DEPT. DATE: 10-17-78
 ENGINEER OF DESIGN: DALLAS WATER UTILITIES DEPT.
 CONTRACT NO. 78-2319, 78-2622 - Shimsion Jan. 25, 1978

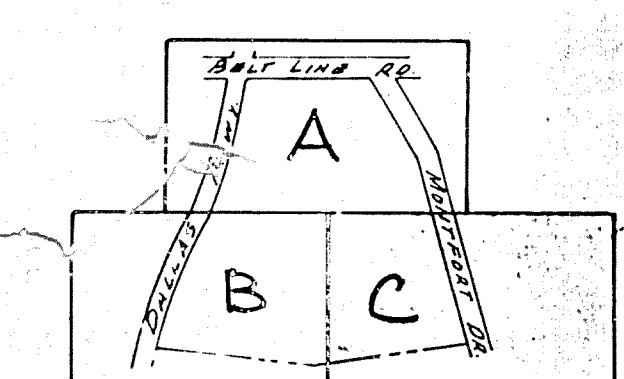
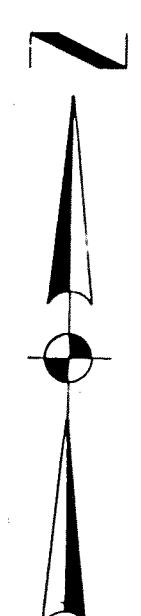
WATER & SANITARY SEWER PLANS

VILLAGE ON THE PARKWAY
 VILLAGE PARKWAY VENTURE
 ALBERT H. HALFF ASSOCIATES, INC. - ENGINEERS
 CITY OF ADDISON, TEXAS

DESIGN	DRAWN	DATE	SCALE	NOTES	FILE	NO.
ALH	MP	MAR 1978	1"=40'	648	4110	1260



Prestonwood Junction
 411Q 1960 Sh. 47, 48
 ABST. 157
 CITY OF ADDISON
 MARY T. MENTIRE KNIGHT
 VOL. 7124 Page 155



KEY MAP

WATER & SANITARY SEWER GENERAL NOTES

- ALL 12" AND SMALLER WATER LINES TO BE CLASS 51 D.I.
- ALL WATER LINES TO HAVE MINIMUM COVER AS FOLLOWS:
 a. 8' OR LESS 4' BELOW APPROVED STREET GRADES OR AS REQUIRED TO CLEAR OTHER UTILITIES.
 b. 12'-5' BELOW APPROVED STREET GRADES OR AS REQUIRED TO CLEAR OTHER UTILITIES.
- SANITARY SEWER LATERALS SHALL BE SIZED AND LOCATED AS SHOWN.
- DUE TO SOIL RESISTIVITY READINGS OF LESS THAN 2000 OHMS PER C.C., ALL D.I. PIPE SHALL HAVE 8 MIL POLYETHYLENE WRAP.
- WATER AND SANITARY SEWER ESMTS. SHALL INCLUDE ADDITIONAL AREA OF WORKING SPACE FOR CONSTRUCTION AND MAINTENANCE OF THE SYSTEM. ADDITIONAL ESMT. AREA ALSO CONVEYED FOR INSTALLATION AND MAINTENANCE OF MANHOLES, CLEANOUTS, FIRE HYDRANTS, SERVICES, LATERALS, METERS AND OTHER APPURTENANCES NECESSARY FOR PROPER OPERATION OF THE SYSTEM.
- EXTEND WATER SERVICES AND SANITARY SEWER LATERALS 2' BEYOND PROPOSED CURB.
- ALL WATER SERVICES TO BE SIZED AND LOCATED AS SHOWN.
- THE CONTRACTOR SHALL PROTECT ALL PUBLIC UTILITIES IN THE CONSTRUCTION OF THIS PROJECT. ALL MANHOLES, CLEANOUTS, VALVE BOXES, FIRE HYDRANTS, ETC., MUST BE ADJUSTED TO PROPER LINE AND GRADE BY THE DEVELOPER AND OR THE CONSTRUCTOR PRIOR TO AND AFTER PLACING OF PERMANENT PAVING. UTILITIES MUST BE MAINTAINED TO PROPER LINE AND GRADE DURING THE CONSTRUCTION OF THE PAVING FOR THE DEVELOPMENT.
- ALL FIRE HYDRANTS SHALL BE MUELLER CENTURY AS REQUIRED BY THE CITY OF ADDISON.
- ALL WATER SERVICES TO EXISTING MAINS SHALL BE INSTALLED BY CONTRACTOR.

LOT CORNER COORDINATES

#	Y	X
48	1201.196	2802.543

BENCH MARK:
 STANDARD WATER DEPT. BENCH MARK
 CENTER INLET - NORTHWEST CORNER
 BELTLINE ROAD AND DALLAS PKWY.
 ELEV: 632.08

LOCATION: VILLAGE ON THE PARKWAY - PHASE I
 DESIGNED: DATE: 10-17-78
 ALBERT H. HALFF ASSOCIATES, INC. ENGINEERS
 R.O.W. APPROVED: H.L. TEE / DATE 10-17-78
 ENGINEER OF DESIGN: Dallas Water Utilities Dept.
 CONTRACT No. 78-20178-262P - Shimon Sept. 25, 1978

NOTE: REFER TO SHEET 38 FOR 12 INCH WATER LINE PROFILE - MONTFORT DRIVE.
 REFER TO SHEET 37 FOR SANITARY SEWER PROFILES.

36

WATER & SANITARY SEWER PLANS						
VILLAGE ON THE PARKWAY						
VILLAGE PARKWAY VENTURE						
ALBERT H. HALFF ASSOCIATES, INC. ENGINEERS						
CITY OF ADDISON, TEXAS						
DESIGN	DRAWN	DATE	SCALE	NOTES	FILE	NO.
AH&B ASSOC.	T.P.	MAY 1978	1" = 40'	6145	6119	9960