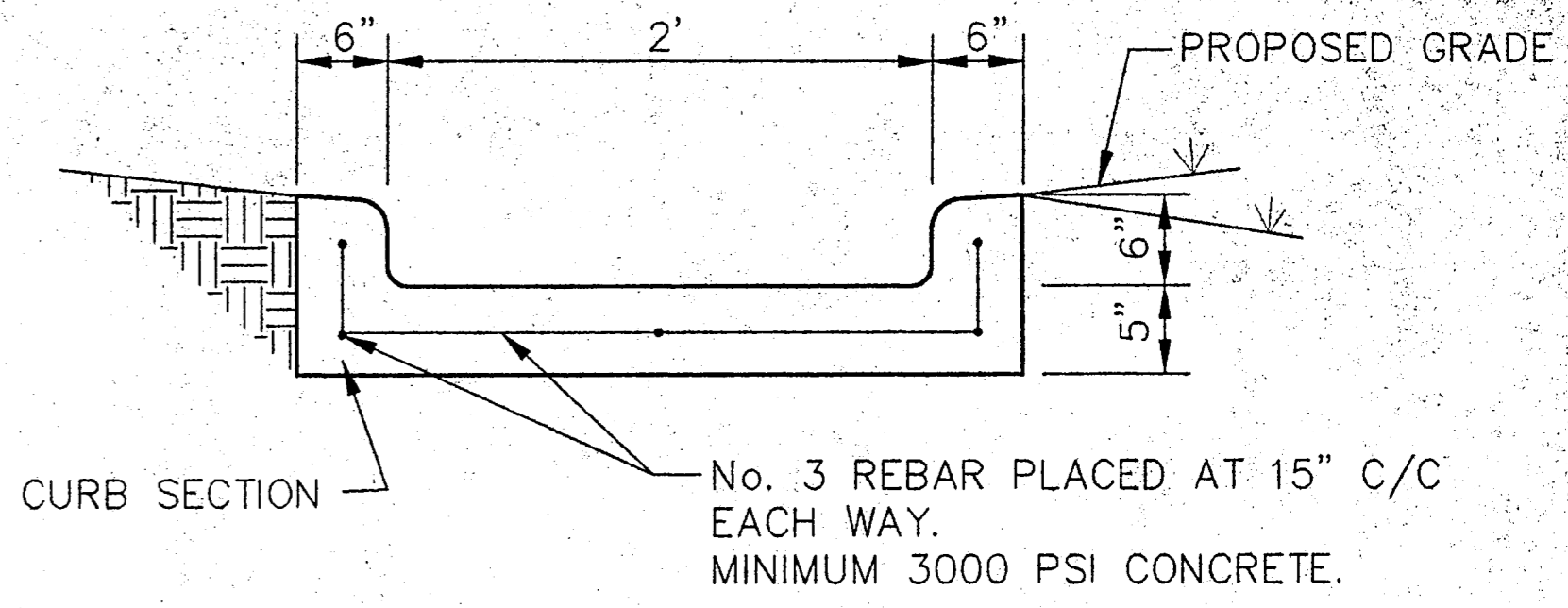
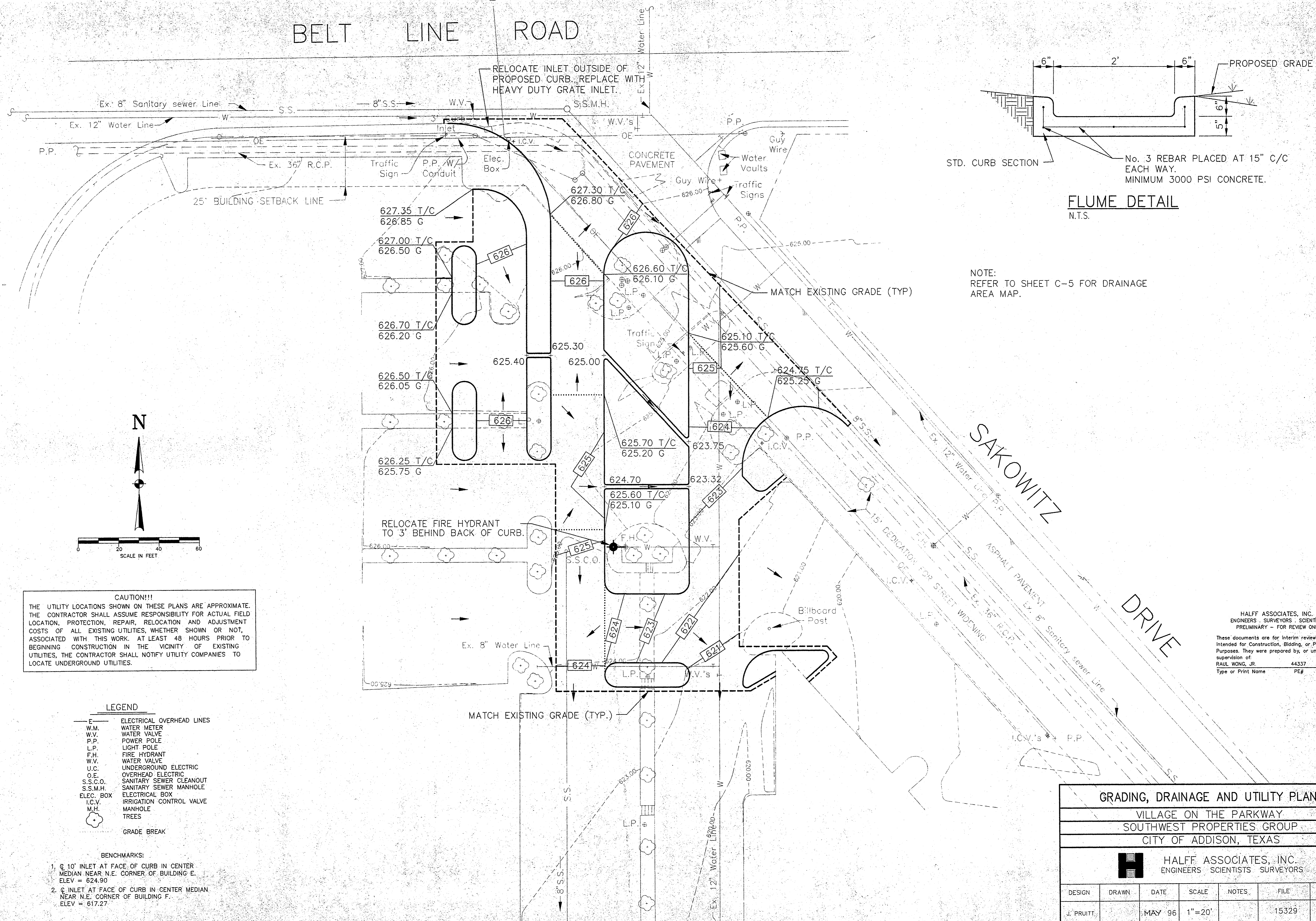
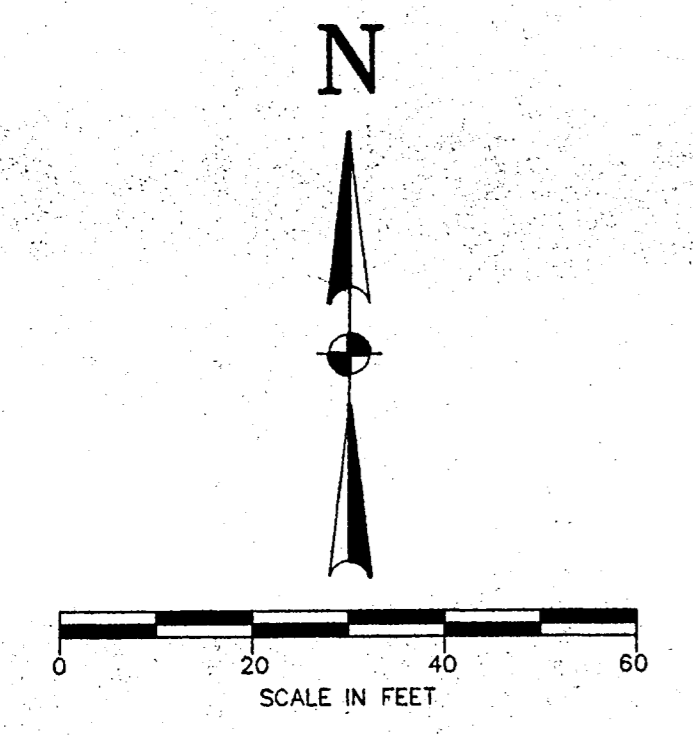


# BELT LINE ROAD



**FLUME DETAIL**  
N.T.S.

NOTE:  
REFER TO SHEET C-5 FOR DRAINAGE  
AREA MAP.



**CAUTION!!!**  
THE UTILITY LOCATIONS SHOWN ON THESE PLANS ARE APPROXIMATE. THE CONTRACTOR SHALL ASSUME RESPONSIBILITY FOR ACTUAL FIELD LOCATION, PROTECTION, REPAIR, RELOCATION AND ADJUSTMENT COSTS OF ALL EXISTING UTILITIES, WHETHER SHOWN OR NOT, ASSOCIATED WITH THIS WORK. AT LEAST 48 HOURS PRIOR TO BEGINNING CONSTRUCTION IN THE VICINITY OF EXISTING UTILITIES, THE CONTRACTOR SHALL NOTIFY UTILITY COMPANIES TO LOCATE UNDERGROUND UTILITIES.

- LEGEND**
- E — ELECTRICAL OVERHEAD LINES
  - W.M. WATER METER
  - W.V. WATER VALVE
  - P.P. POWER POLE
  - L.P. LIGHT POLE
  - F.H. FIRE HYDRANT
  - W.V. WATER VALVE
  - U.C. UNDERGROUND ELECTRIC
  - O.E. OVERHEAD ELECTRIC
  - S.S.C.O. SANITARY SEWER CLEANOUT
  - S.S.M.H. SANITARY SEWER MANHOLE
  - ELEC. BOX ELECTRICAL BOX
  - I.C.V. IRRIGATION CONTROL VALVE
  - M.H. MANHOLE
  - ☉ TREES
  - GRADE BREAK

- BENCHMARKS:**
1. 10' INLET AT FACE OF CURB IN CENTER MEDIAN NEAR N.E. CORNER OF BUILDING E. ELEV = 624.90
  2. 10' INLET AT FACE OF CURB IN CENTER MEDIAN NEAR N.E. CORNER OF BUILDING F. ELEV = 617.27

HALFF ASSOCIATES, INC.  
ENGINEERS - SURVEYORS - SCIENTISTS  
PRELIMINARY - FOR REVIEW ONLY

These documents are for interim review and not intended for construction, bidding, or permit purposes. They were prepared by, or under the supervision of:  
RAUL WONG, JR. 44337 05/24/96  
Type or Print Name PE# Date

<b>GRADING, DRAINAGE AND UTILITY PLAN</b>						
VILLAGE ON THE PARKWAY						
SOUTHWEST PROPERTIES GROUP						
CITY OF ADDISON, TEXAS						
<b>HALFF ASSOCIATES, INC.</b> ENGINEERS - SCIENTISTS - SURVEYORS						
DESIGN	DRAWN	DATE	SCALE	NOTES	FILE	NO.
J. PRUITT		MAY 96	1"=20'		15329	C-7