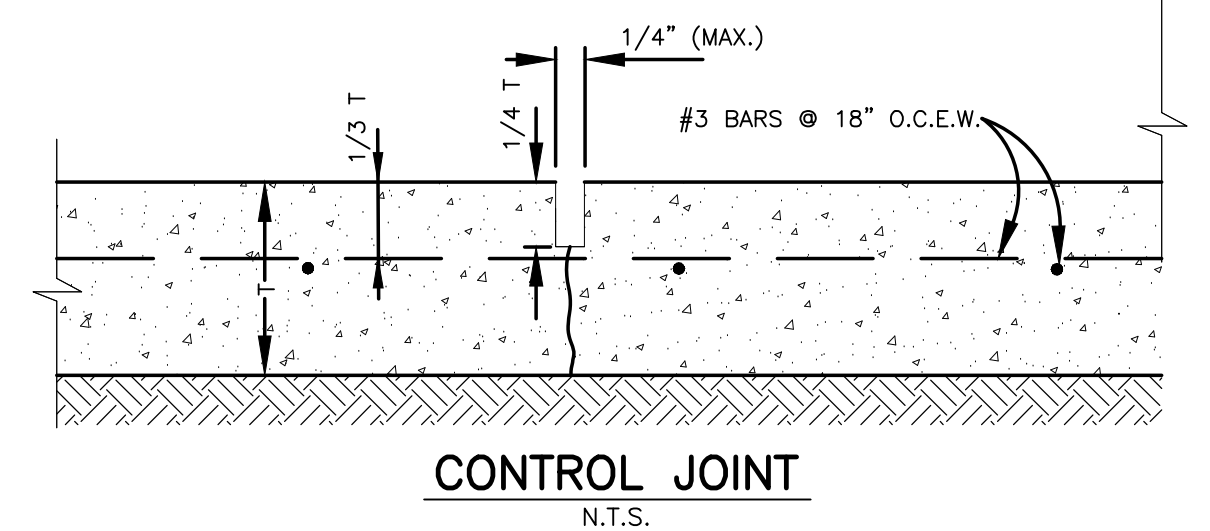


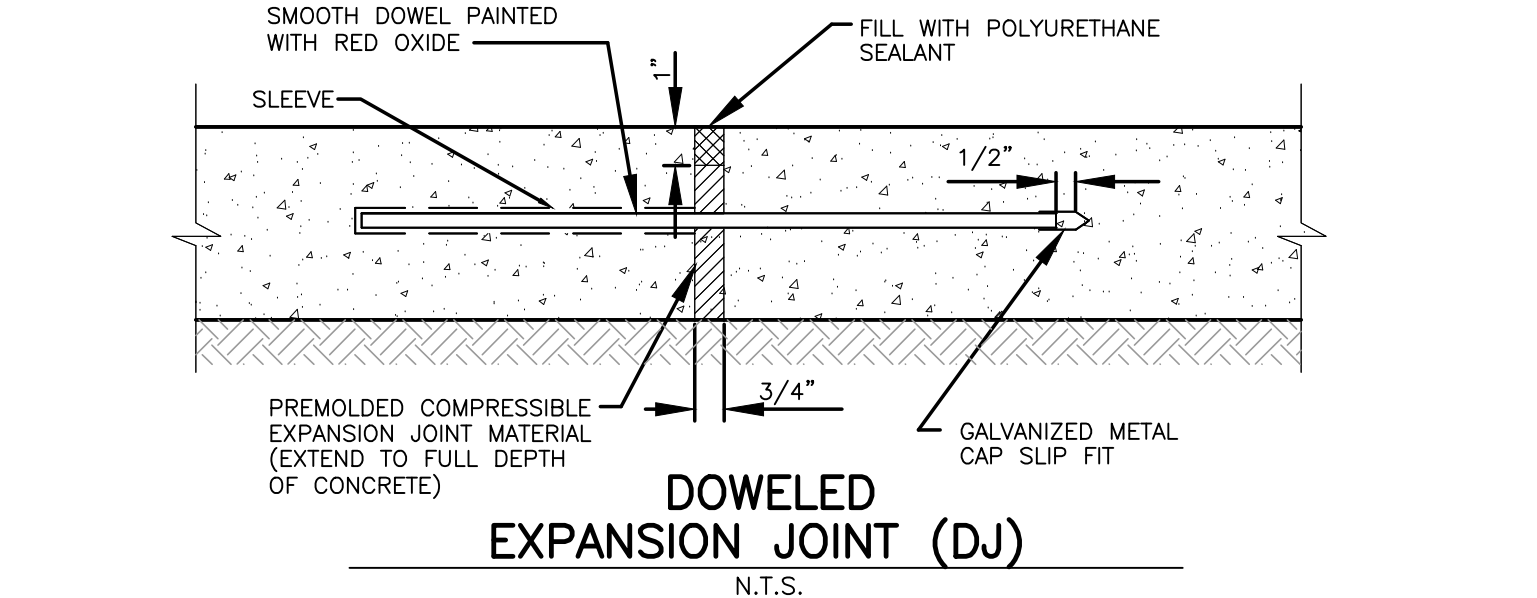
CONTRACTOR SHALL CONSULT THE GEOTECHNICAL ENGINEERING STUDY PREPARED BY INTEC OF DFW METRO, INC., INTEC PROJECT NO. D131123, REPORT DATED MAY 22, 2013, FOR PAVEMENT DESIGN SPECIFICATIONS AND REQUIRED SITE PREPARATION.



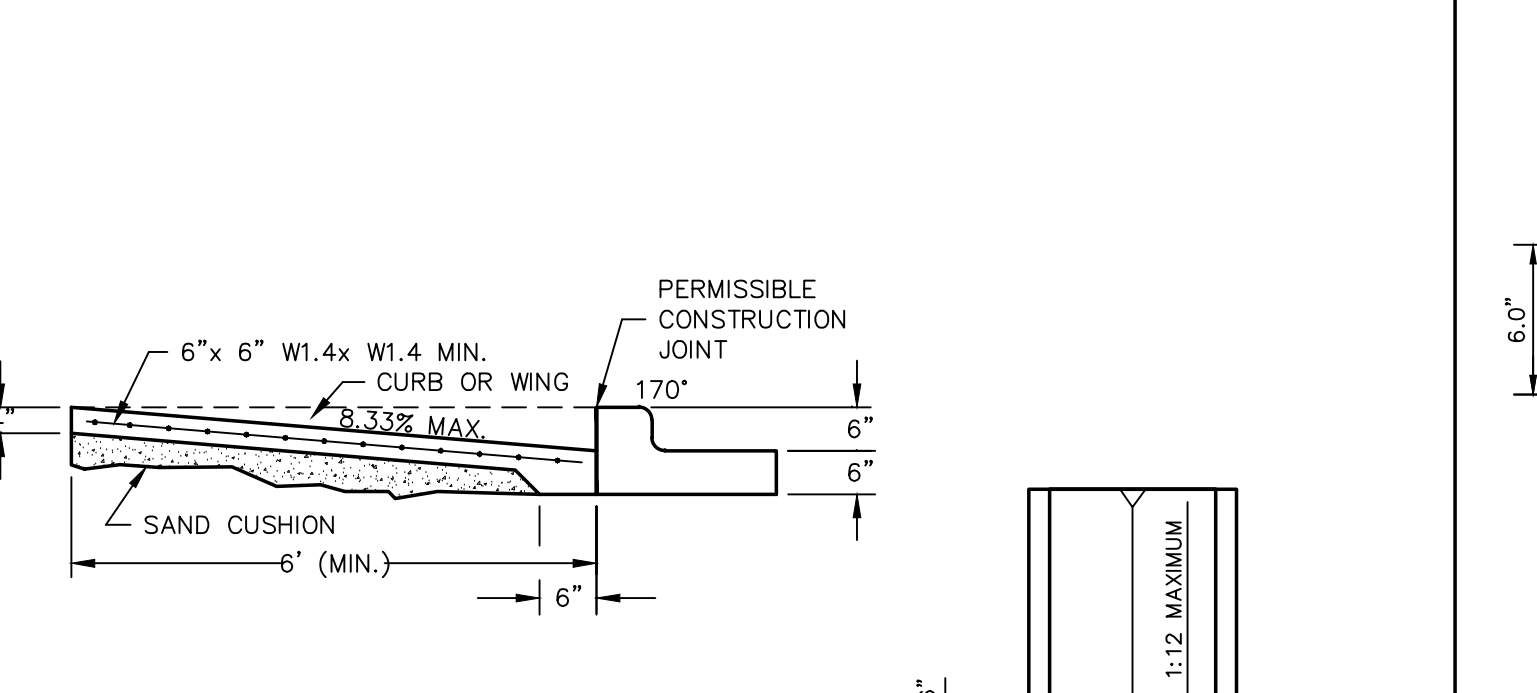
RIGID PAVEMENT SECTIONS:
CONCRETE USED FOR RIGID CONCRETE CONSTRUCTION SHOULD HAVE A MINIMUM 28-DAY COMPRESSIVE STRENGTH OF 3,500 PSI. ALL CONCRETE PAVEMENTS SHOULD CONTAIN 5 PERCENT ±1 PERCENT AIR-ENTRAINMENT. MAXIMUM SLUMP 4 INCHES.

REINFORCED CONCRETE PAVEMENT THICKNESS = 5.0 INCHES LIGHT DUTY, 6.0 INCHES HEAVY DUTY, 6 INCHES FOR DUMPSTER PAD
RECOMMENDED JOINT SPACING IS 15' LONGITUDINAL AND 15' TRANSVERSE.
REINFORCEMENT SIZE = NO. 3 BARS.
REINFORCEMENT SPACING = 18 INCHES ON CENTERS EACH WAY.

- NOTE:**
- REFER TO PAVEMENT NOTES ON C11.12
 - FILL (NON STRUCTURAL) MATERIAL USED TO LEVEL THE PARKING AREAS SHOULD BE FREE OF ORGANIC AND OTHER DELETERIOUS MATERIALS. THE FILL MATERIAL SHOULD BE PLACED IN MAXIMUM LOOSE LIFTS OF 8 INCHES AND COMPACTED TO A MINIMUM OF 95 PERCENT AND NOT MORE THAN 100 PERCENT OF THE MAXIMUM DRY DENSITY. MOISTURE CONTENT SHOULD BE WITHIN THE RANGE OF 3 PERCENTAGE POINTS OF THE OPTIMUM MOISTURE CONTENT AS DETERMINED BY ASTM D 698.



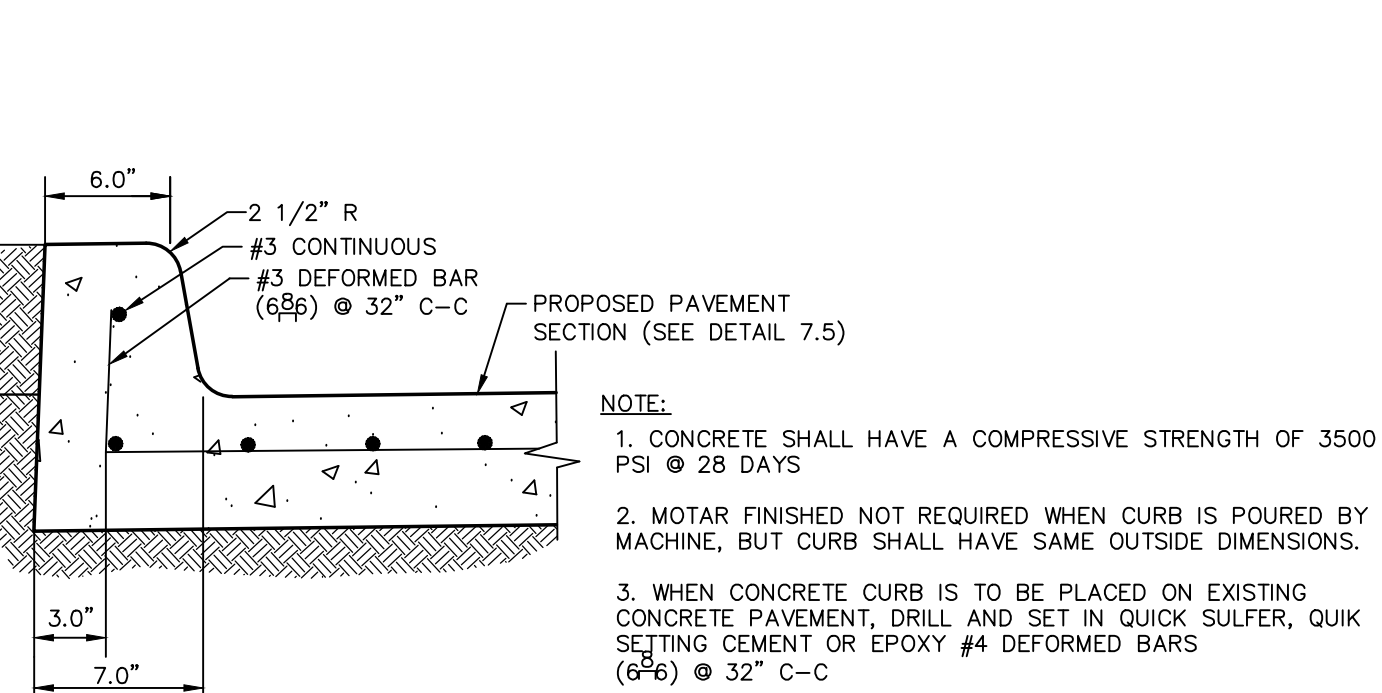
C11.5 PAVING PLAN
SCALE: N.T.S.



- NOTES:**
- ALL RAMP SURFACES SHALL BE BROOM FINISHED.
 - ALL RAMP SHALL MEET ADA AND TAS STANDARD CRITERIA.
 - CONCRETE DESIGN AND THICKNESS PER SIDEWALK DETAIL.

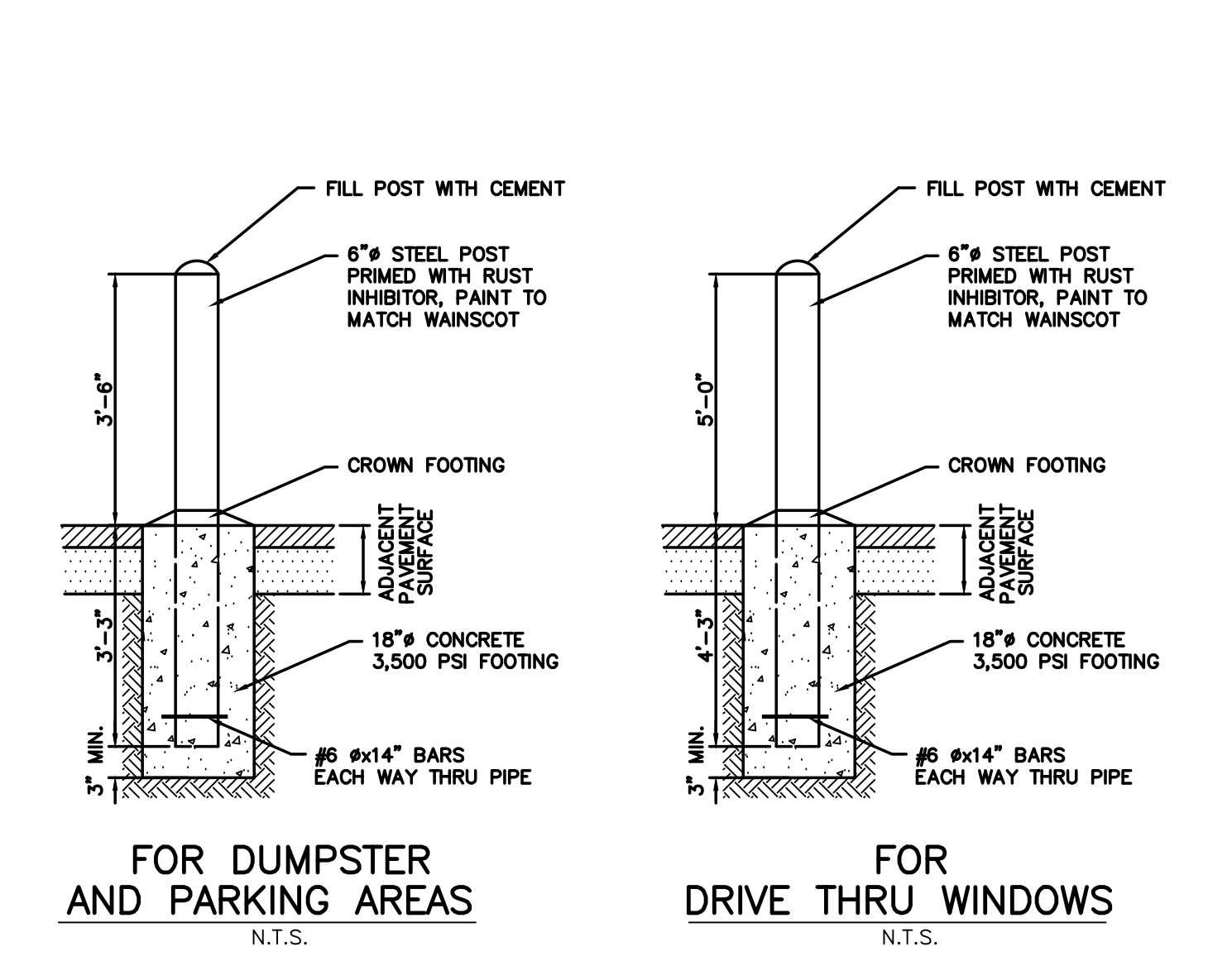
C11.6 HANDICAP CURB RAMP
SCALE: N.T.S.

C11.7 CURB DETAIL
SCALE: N.T.S.

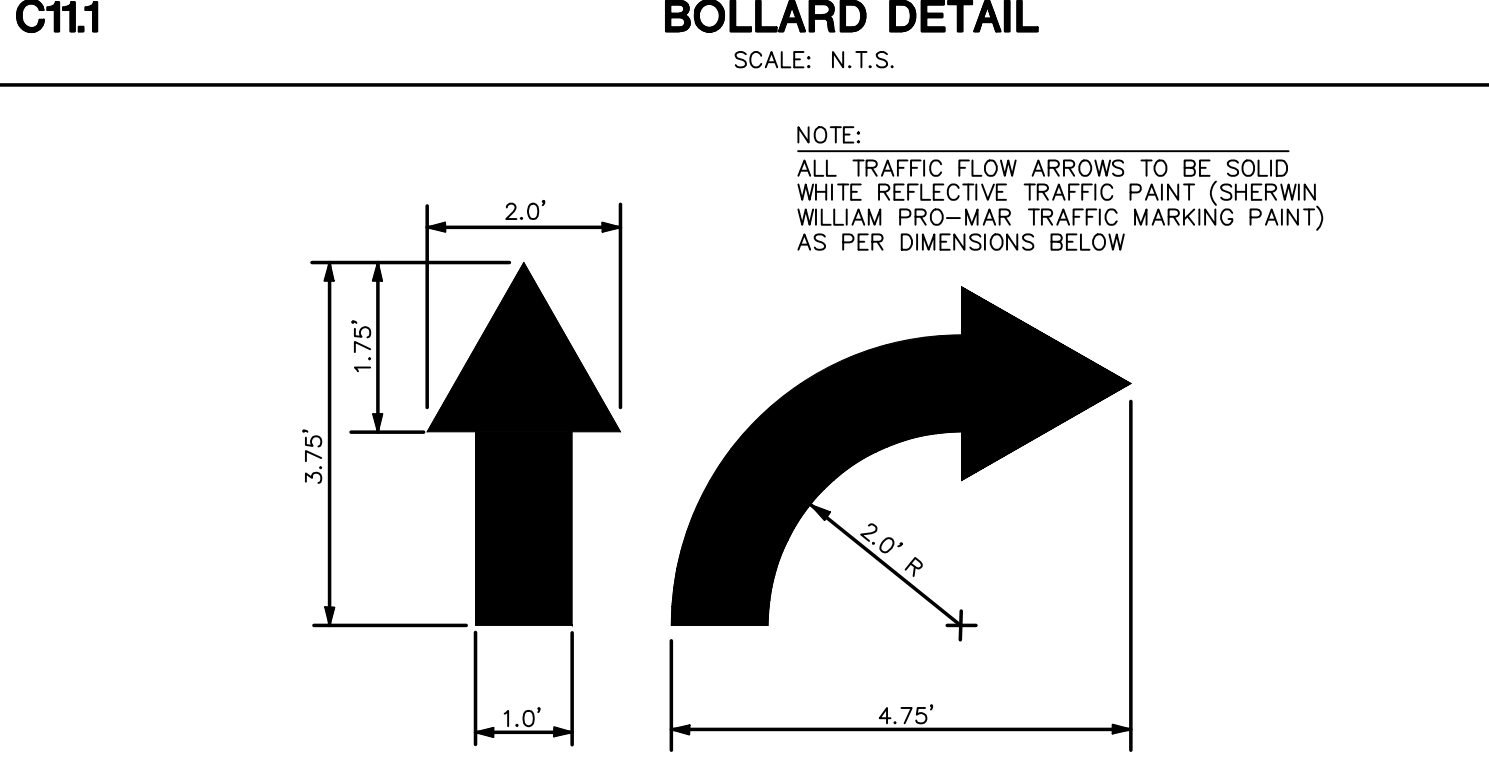


- NOTE:**
- CONCRETE SHALL HAVE A COMPRESSIVE STRENGTH OF 3500 PSI @ 28 DAYS
 - MOTAR FINISHED NOT REQUIRED WHEN CURB IS POURED BY MACHINE, BUT CURB SHALL HAVE SAME OUTSIDE DIMENSIONS.
 - WHEN CONCRETE CURB IS TO BE PLACED ON EXISTING CONCRETE PAVEMENT, DRILL AND SET IN QUICK SULFER, QUIK SETTING CEMENT OR EPOXY #4 DEFORMED BARS (6#6) @ 32" C-C
 - CONTRACTION JOINTS SHALL BE INSTALLED AT INTERVALS OF 15' (MAX.) AND LINE UP WITH JOINTS IN CONCRETE PAVING AREAS.
 - EXPANSION JOINTS SHALL BE INSTALLED AT INTERVALS OF 45' (MAX.) AND LINE UP WITH JOINTS IN CONCRETE PAVING AREAS.

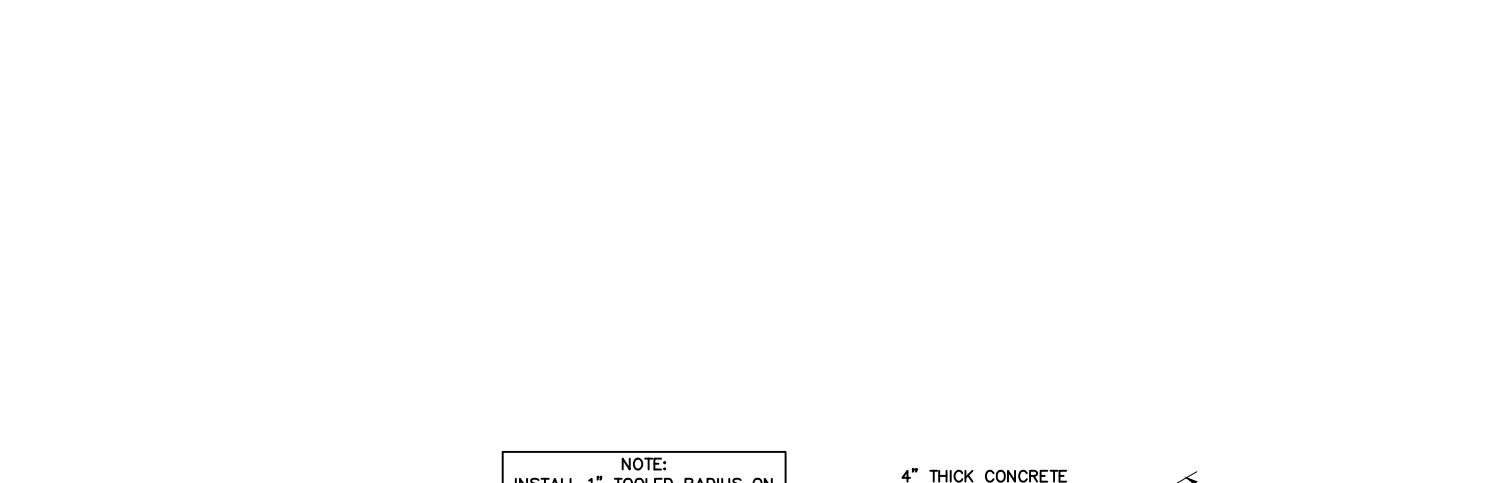
C11.8 HANDICAP RAMP
SCALE: N.T.S.



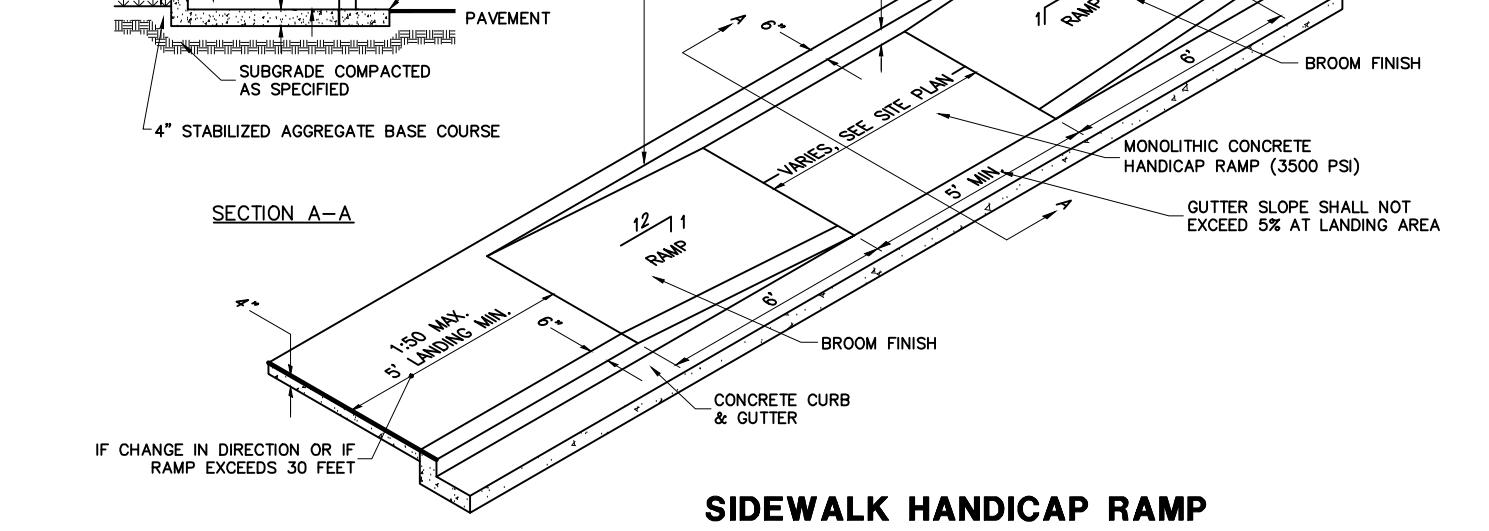
C11.1 BOLLARD DETAIL
SCALE: N.T.S.



C11.2 STANDARD SIDEWALK DETAIL
SCALE: N.T.S.



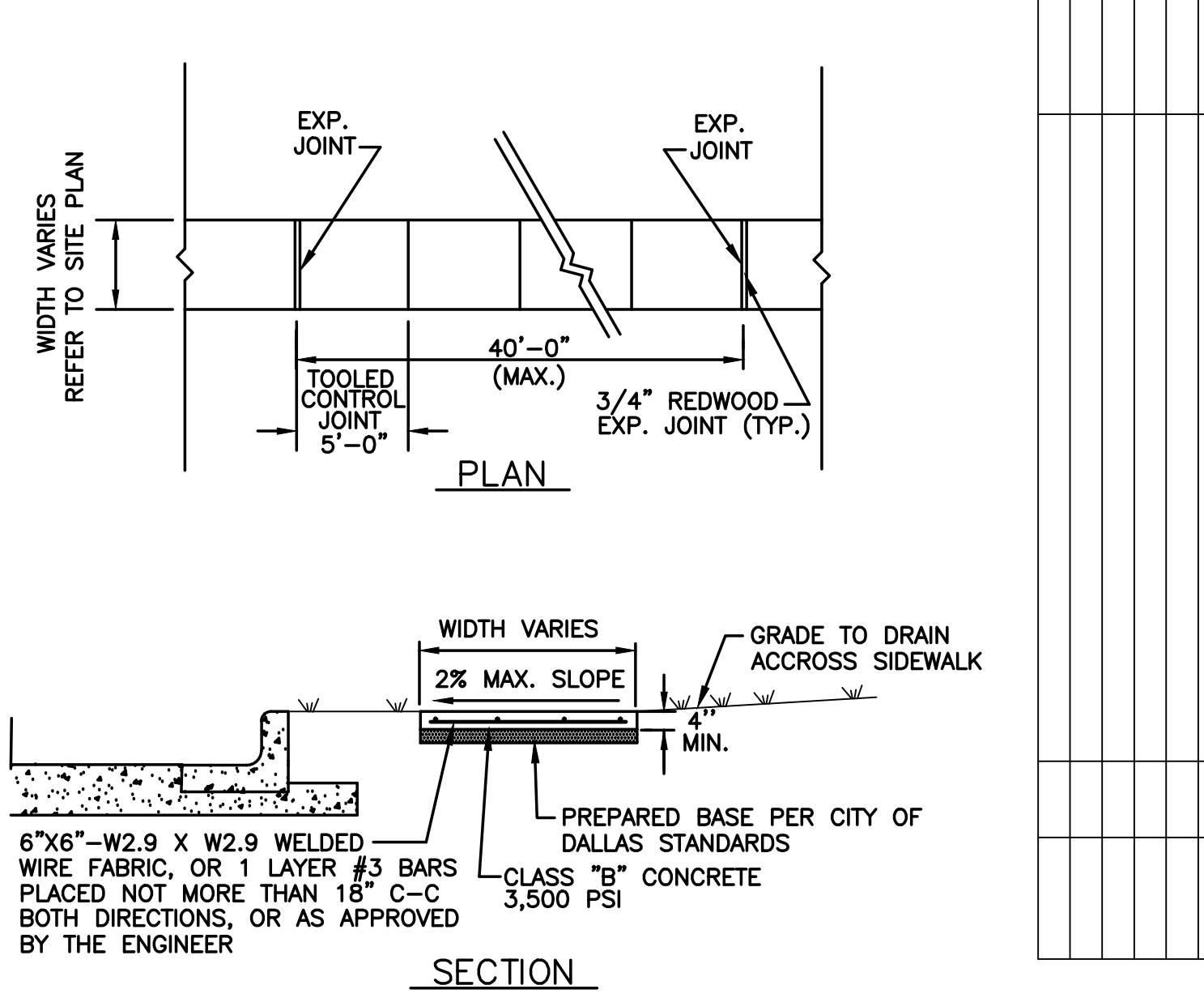
C11.3 TRAFFIC FLOW ARROW DETAILS
SCALE: N.T.S.



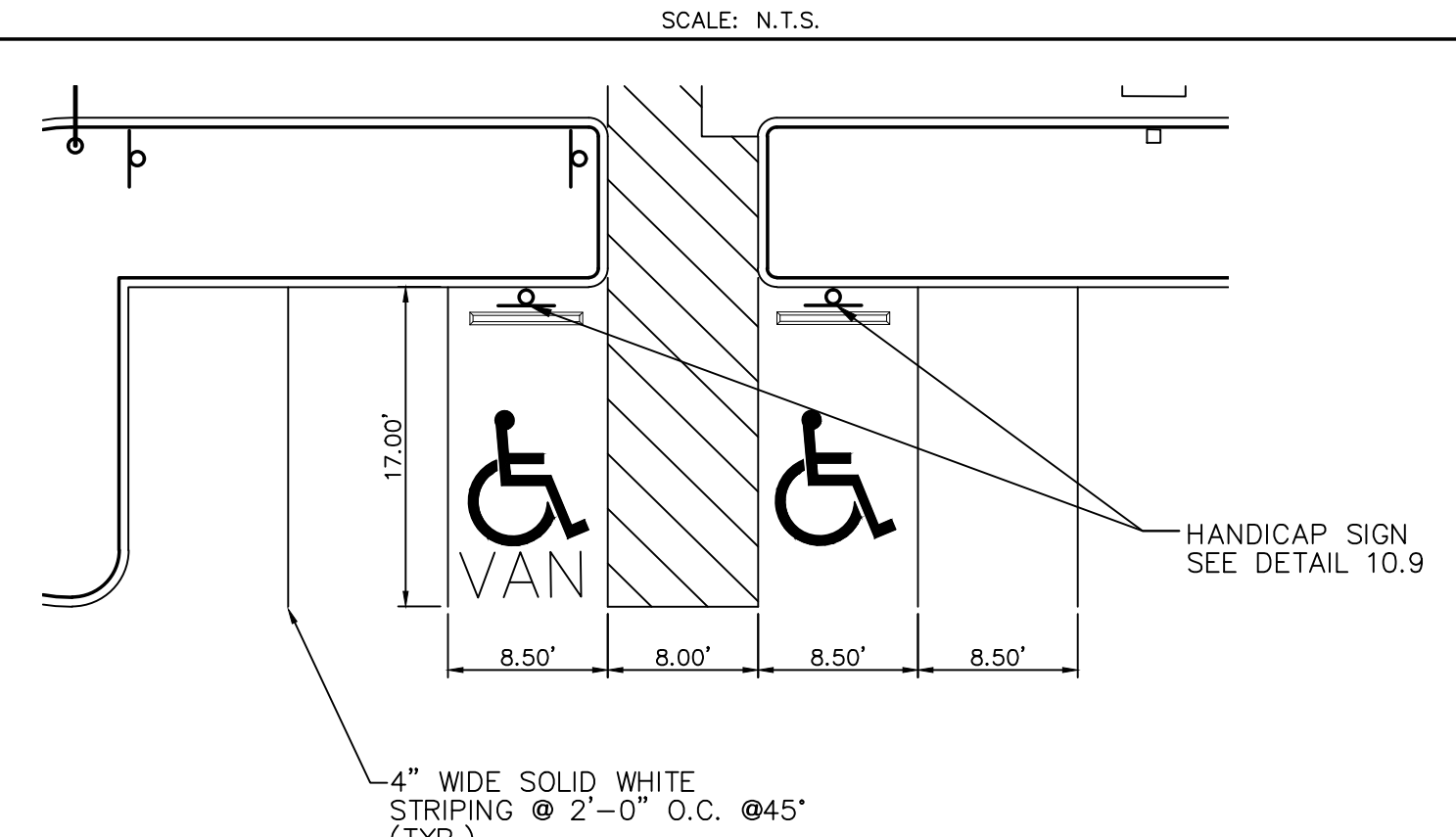
- NOTE:**
- ALL RAMP SURFACES SHALL BE BROOM FINISHED.
 - ALL RAMP'S SHALL MEET ADA & TAS STANDARD CRITERIA.

C11.4 HANDICAP PARKING DETAIL
SCALE: N.T.S.

PLAN OF RECORD
THIS RECORD DRAWING IS A COMPILED OF A COPY OF THE SEALED ENGINEERING DRAWING FOR THIS PROJECT, MODIFIED BY ADDENDA, CHANGE ORDERS, AND INFORMATION FURNISHED BY THE CONTRACTOR. THE INFORMATION SHOWN ON THE RECORD DRAWINGS THAT WAS PROVIDED BY THE CONTRACTOR OR OTHERS NOT ASSOCIATED WITH THE DESIGN ENGINEER CANNOT BE VERIFIED FOR ACCURACY OR COMPLETENESS. THE ORIGINAL SEALED DRAWINGS ARE ON FILE AT THE OFFICES OF BURY-SAN, INC. DATE: APRIL 28, 2014.

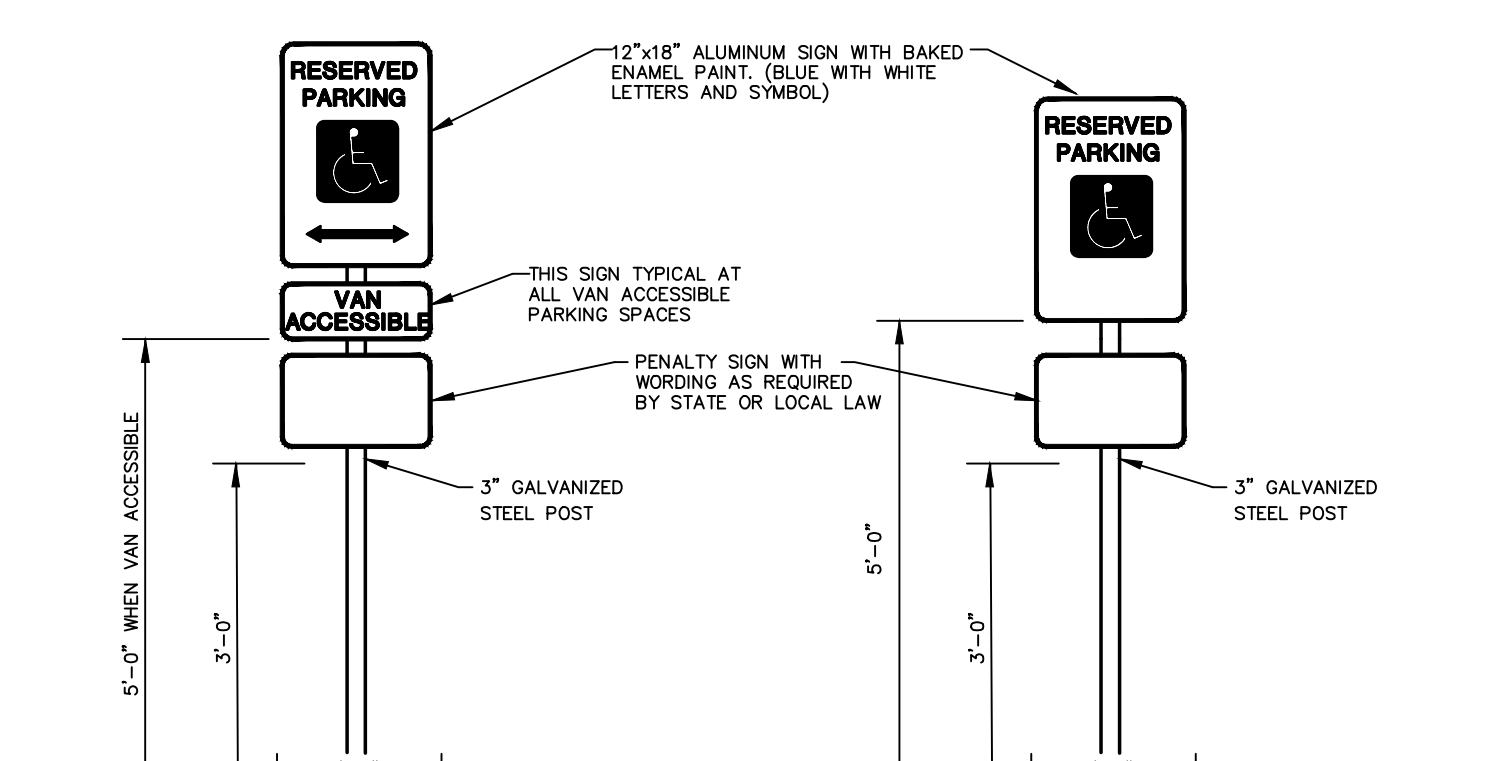


C11.5 DOWELED EXPANSION JOINT (DJ)
N.T.S.



- NOTES:**
- ALL WALKWAYS, RAMPS AND HANDICAP PARKING SIGNAGE, ETC. SHALL MEET APPROVED ADA STANDARDS.
 - 2% MAXIMUM SLOPE IN ALL DIRECTIONS IN AREAS OF HANDICAP PARKING SPACES.
 - ALL PAVEMENT MARKINGS SHALL BE SHERWIN WILLIAMS PRO-MAR TRAFFIC MARKING PAINT

C11.6 HANDICAP CURB RAMP
SCALE: N.T.S.



C11.7 CURB DETAIL
SCALE: N.T.S.

PLAN OF RECORD
THIS RECORD DRAWING IS A COMPILED OF A COPY OF THE SEALED ENGINEERING DRAWING FOR THIS PROJECT, MODIFIED BY ADDENDA, CHANGE ORDERS, AND INFORMATION FURNISHED BY THE CONTRACTOR. THE INFORMATION SHOWN ON THE RECORD DRAWINGS THAT WAS PROVIDED BY THE CONTRACTOR OR OTHERS NOT ASSOCIATED WITH THE DESIGN ENGINEER CANNOT BE VERIFIED FOR ACCURACY OR COMPLETENESS. THE ORIGINAL SEALED DRAWINGS ARE ON FILE AT THE OFFICES OF BURY-SAN, INC. DATE: APRIL 28, 2014.

BURY
2922 Isom Road, Suite 100
Tulsa, OK 74104
Tel: (918) 438-0900 Fax: (918) 438-0929
TSP# Registration Number F-1048
Copyright © 2014

Pollo Tropical

SITE PLAN DETAILS
POLLO TROPICAL
5230 BELT LINE ROAD
TOWN OF ADDISON, DALLAS COUNTY, TEXAS

PLOTTING SCALE: 1" = 1'
DATE ISSUED: APRIL 2014
FILE: G:\103504\50058\SPD01
DRAWN BY: BIL
DESIGNED BY: CC
REVIEWED BY: CC
PROJECT NO.: R0103504-058

C-11