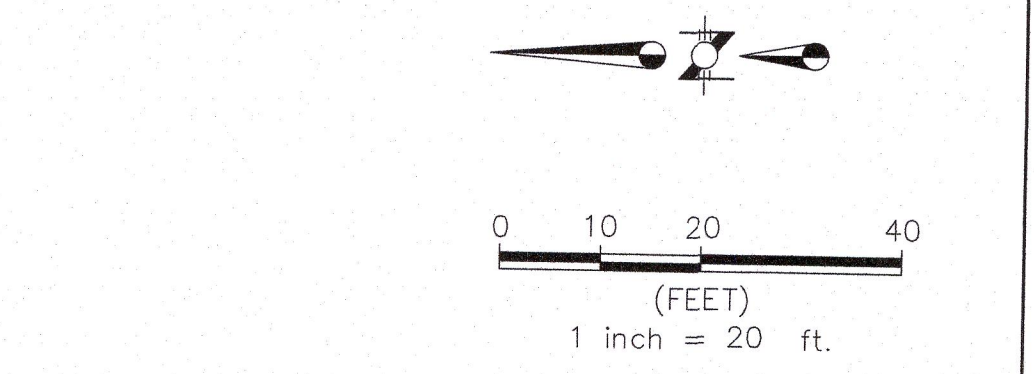
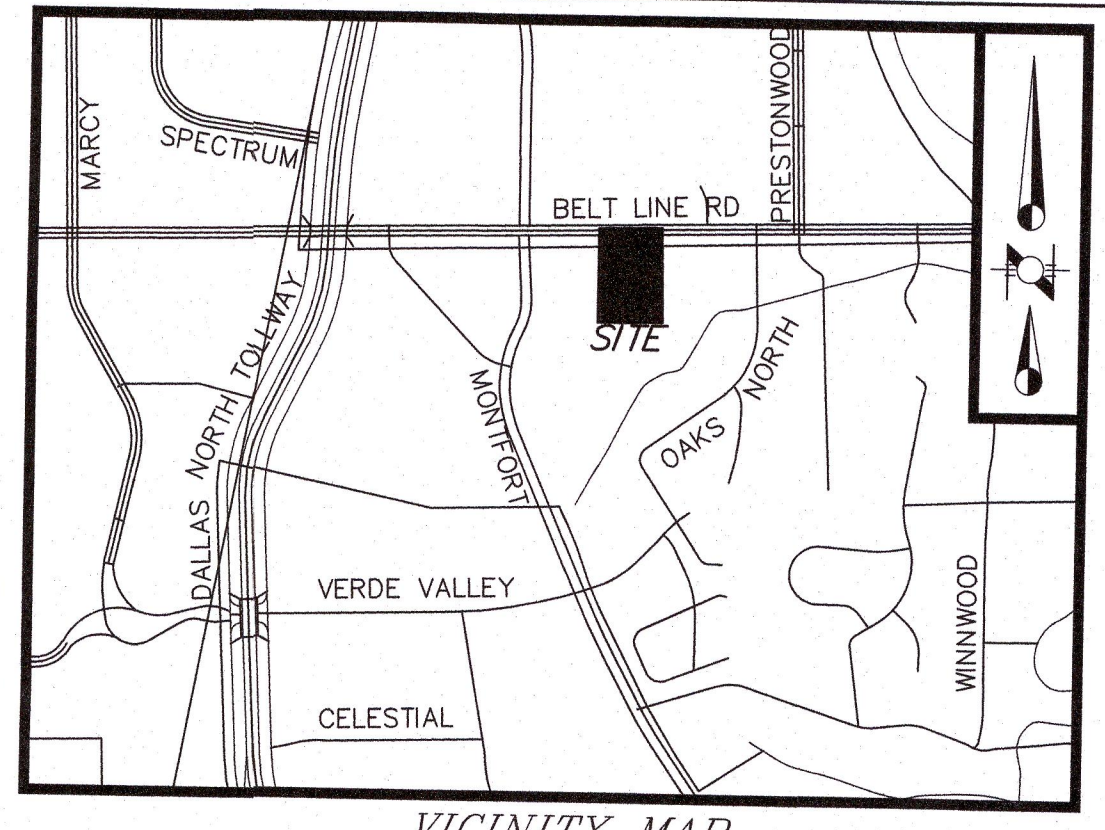
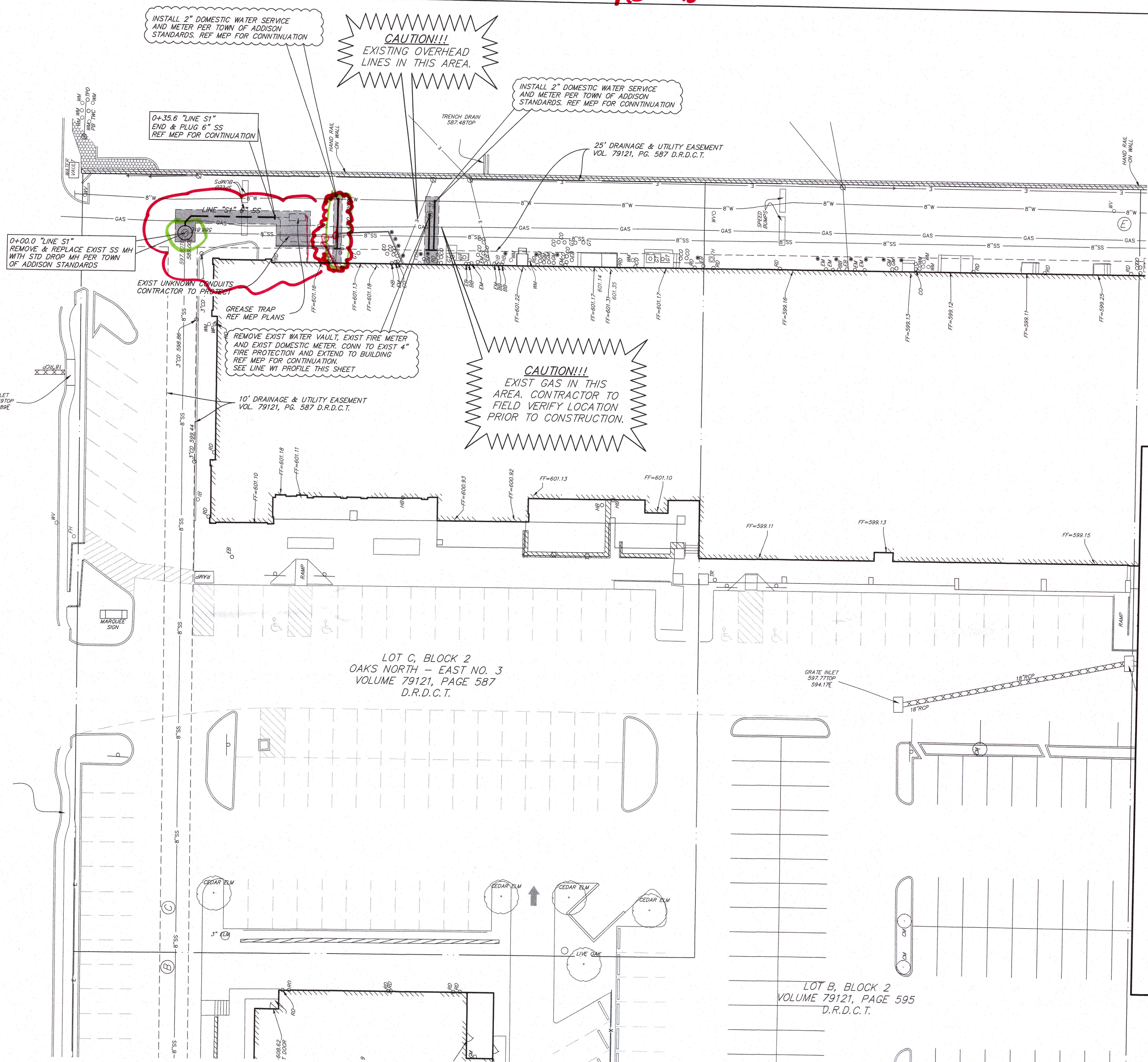
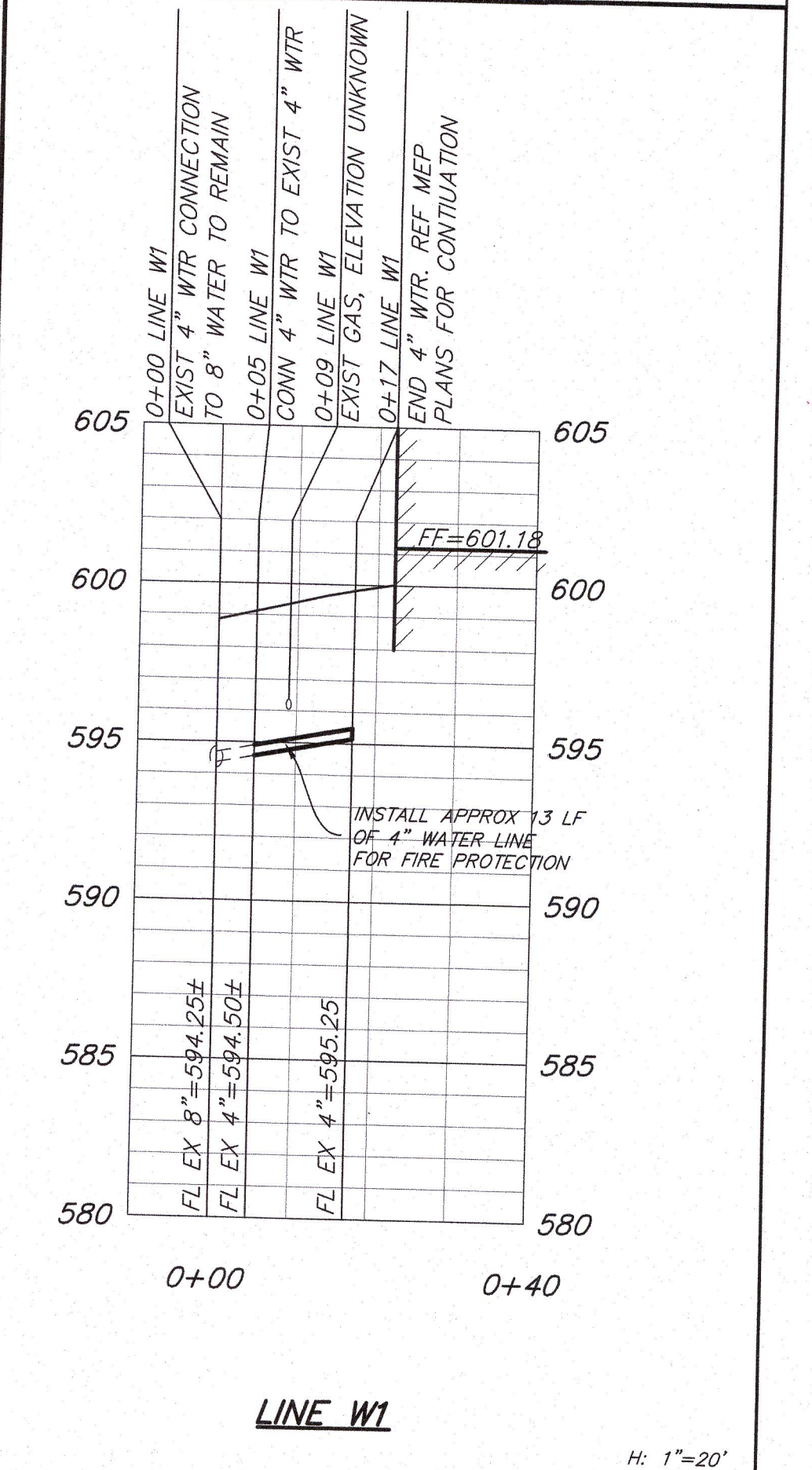
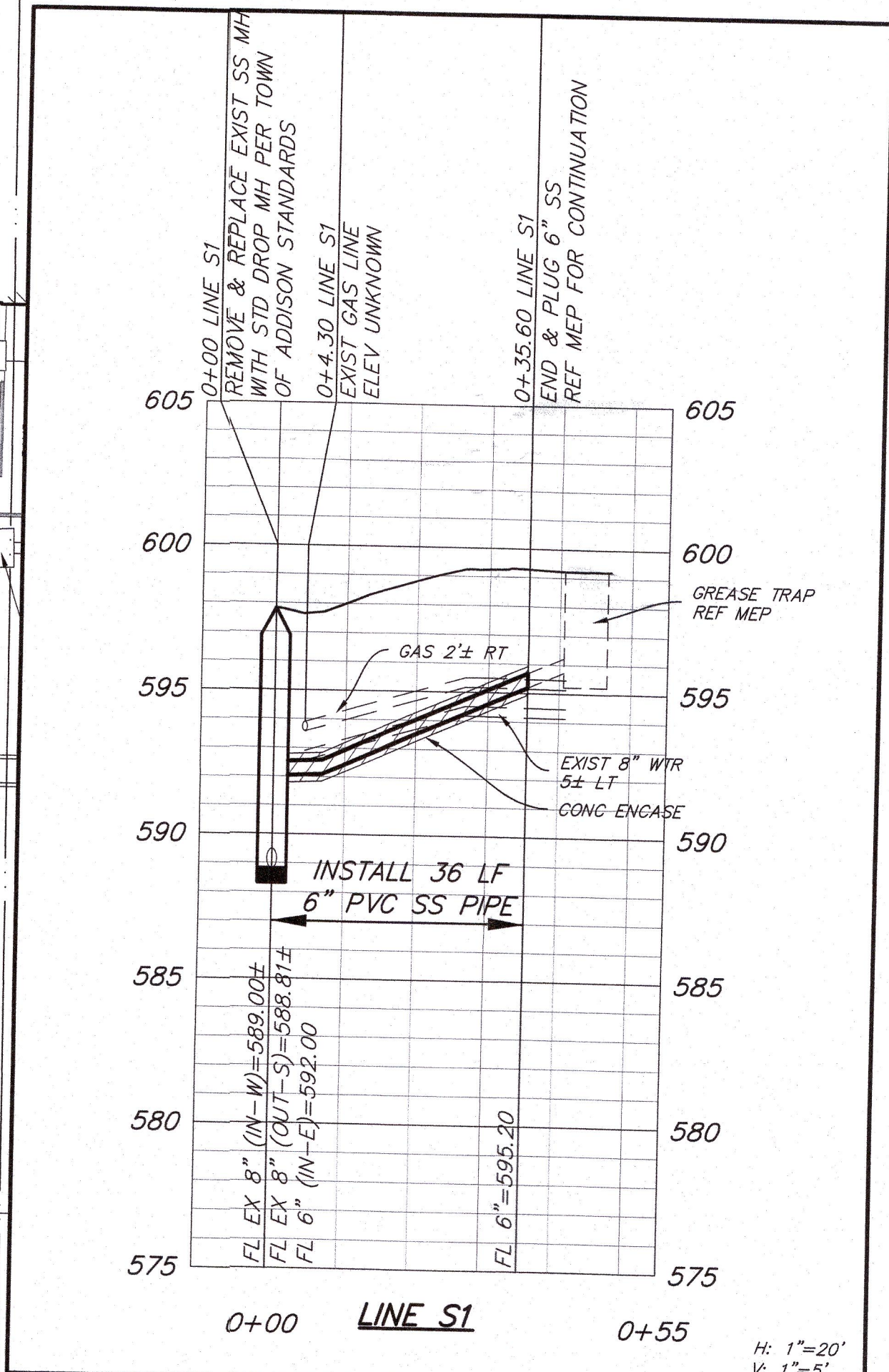


AS-BUILT

BELT LINE ROAD  
(100' RIGHT-OF-WAY)



- LEGEND**
- 8"SS --- EXISTING SANITARY SEWER LINE
  - 12" --- PROPOSED SANITARY SEWER LINE
  - 8"W --- EXISTING WATER LINE
  - 12"W --- PROPOSED WATER LINE
  - REMOVE AND REPLACE PAVEMENT FOR UTILITY INSTALLATION PER TOWN OF ADDISON STANDARDS
  - - - - - APPROXIMATE LIMITS OF FULL DEPTH PAVEMENT SAWCUT



AS-BUILT

APPROVED FOR CONSTRUCTION  
INFRASTRUCTURE & DEVELOPMENT SERVICES  
BY: *[Signature]*  
DATE: 9/9/19

IN APPROVING THESE PLANS, THE TOWN OF ADDISON ASSUMES NO RESPONSIBILITY FOR THEIR ADEQUACY, WHICH REMAINS WITH THE ENGINEER OF RECORD.  
16801 WESTGROVE DRIVE, ADDISON, TX 76001 - (972) 450-2871



**BENCHMARKS:**  
A STANDARD WATER DEPARTMENT BENCHMARK ON THE SOUTHEAST CORNER OF CONCRETE BRIDGE ON THE INTERSECTION OF PRESTON ROAD AND WHITE ROCK CREEK. ELEVATION=554.053  
BM#: SQUARE CUT ON THE END OF A MONOLITHIC MEDIAN NOSE DIRECTLY EAST OF THE INTERSECTION OF BELT LINE AND MONTFORT. ELEVATION=620.16

AS-BUILT

<b>RLG CONSULTING ENGINEERS</b> 12001 N. CENTRAL EXPRESSWAY #300 DALLAS, TX 75243 WWW.RLGINC.COM TBPE FIRM REG. F-493					
<b>UTILITY PLAN</b>					
PRESTONWOOD PLACE					
LOTS A, B, C, D - BLOCK 2					
NORTHWOOD RETAIL, LLC					
TOWN OF ADDISON, TEXAS					
REVIEW	DRAWN	DATE	FILE	NUMBER	SHEET
RLG	RLG	9/9/19	1913	009	C1.00

R:\Projects\2019\1913\1913009\_Prestonwood\_Place\_Renovation\19 - Project Drawings\SPACE STACK\_WATER & SANITARY\1913009 UTILITY PLAN.dwg: 9/9/2019  
 PLOT DATE: 9/9/2019 10:45:00 AM  
 PLOT BY: RLG