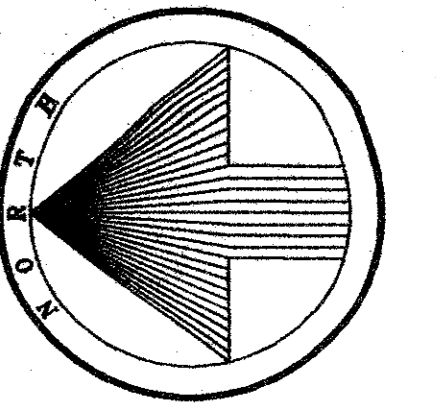
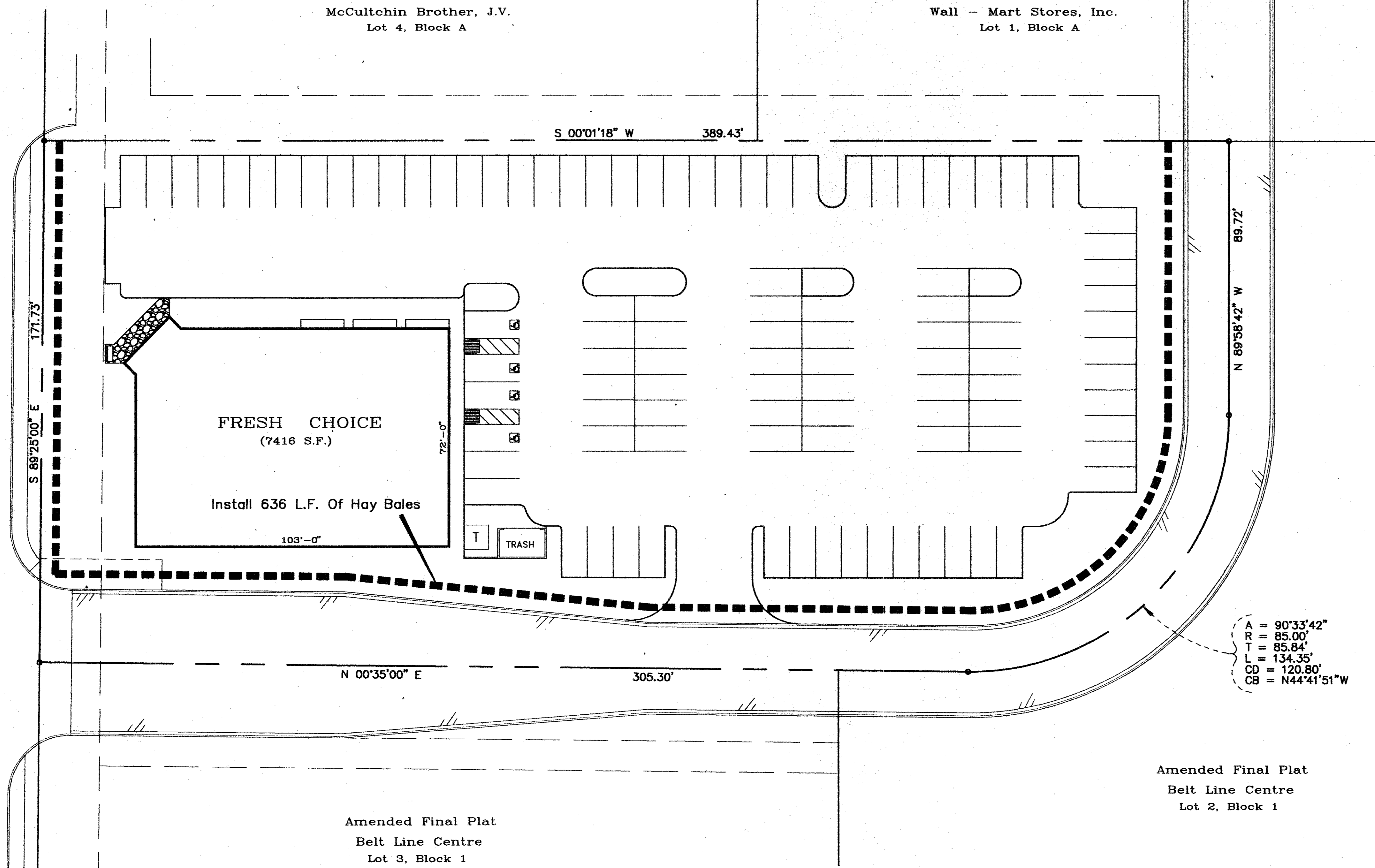


SAMS CLUB ADDITION
(Vol. 92108, Pg. 3987)



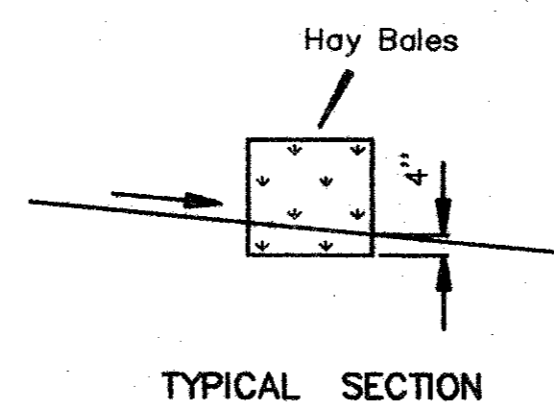
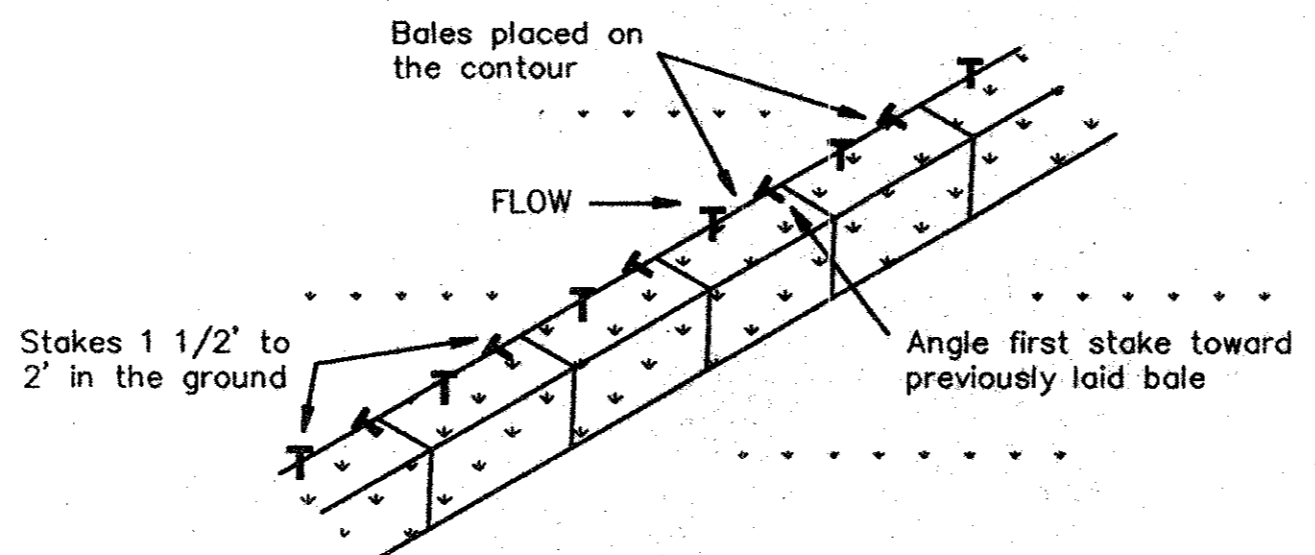
Belt Line Road



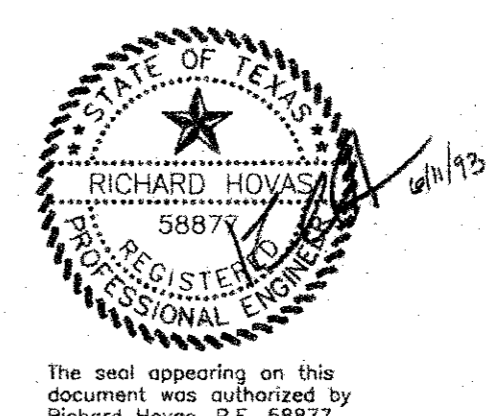
- GENERAL NOTES FOR STORM WATER POLLUTION PREVENTION PLAN
- All operators and/or contractors shall conform to the terms and conditions of the National Pollution Discharge Elimination Systems (NPDES) General Permit as published in the Federal Register, Vol. 57, No. 175, September 9, 1992, by the Environmental Protection Agency (EPA). The Notice of Intent (NOI), as required by the General Permit, must be properly displayed on site at all times by each operator.
 - All releases of reportable quantities of hazardous substances shall be reported immediately to the facility operator and EPA.
 - Qualified operator personnel must inspect the site at least once every seven days and within 24 hours of a 1/2" or greater rainfall event. The Inspector shall document the results.
 - Modifications to the Storm Water Pollution Prevention Plan shall be implemented and be in-place within a seven calendar day period.
 - If any contractor sees a violation by an operator or another contractor, he shall notify the operator and contractor in violation, as well as the facility operator.
 - Erosion control shall be installed prior to any grading.
 - Accumulated silt deposits shall be removed from silt fences and hay bale dikes when silt depth reaches six inches. Removal of silt deposits by the contractor shall be incidental to the performance of the contract and a separate bid item shall not be included.
 - The contractor shall add or delete erosion protection at the request and direction of the Operator or the City.
 - After installation of pavement, final lot benching and general cleanup, the Paving Contractor shall establish gross groundcover in all street parkways, lots and all other disturbed areas. Materials shall be as specified in Item 2.15 and seeding shall be in accordance with Item 3.10 of the NCTCOG Standard Specifications.
 - It shall be the contractor's responsibility to control and limit silt and sediment leaving the site. Specifically, the contractor shall protect all public streets, alleys, streams and storm drainage systems from erosion deposits.
 - It shall be the contractor's responsibility to provide a dumpster (or equal) to collect solid waste materials during construction.
 - The attached Drainage Area Map, as prepared by Tipton Engineering, Inc., specifically for this project, shall be made part of the Storm Water Pollution Prevention Plan.
 - It is anticipated that the following non-storm water discharges will be associated with this project. These discharges are authorized through the construction general permit:
 - A. Fire hydrant flushings
 - B. Water used to wash vehicles and to control dust
 - C. Potable water sources including waterline flushings
 - D. Irrigation drainage
 - E. Pavement washdown
 - F. Uncontaminated ground water
 - G. Construction water
 - Construction waste disposal containers shall be provided on the site for disposal of all non-hazardous construction waste materials. The containers shall be hauled to landfill by the Contractor.
 - All hazardous materials shall be handled and disposed of by the Contractor in accordance with Federal, State and Local regulations.

A = 90°33'42"
R = 85.00'
T = 85.84'
L = 134.35'
CD = 120.80'
CB = N44°41'51"W

- CONSTRUCTION NOTES:
- Hay bales shall be installed a minimum of 4" into the ground.
 - Contractor will install additional erosion control where erosion protection is needed as per the owners engineers, or the Town of Addison inspector.
 - The existing vegetation along existing parkways and medians shall be replaced to its original condition or better.



TYPICAL HAY BALE PLACEMENT
PHASE 1
Not To Scale



STORM WATER POLLUTION

| PREVENTION PLAN | | | | | | |
|---|-----------|------|--------|-------|------|-----|
| FRESH CHOCIE | | | | | | |
| Town Of Addison, Texas | | | | | | |
| A. H. ASSOCIATES, INC. | | | | | | |
| 6330 Belt Line Rd. ~ Suite C ~ Garland, Texas 75043 | | | | | | |
| DESIGN | DRAWN | DATE | SCALE | NOTES | FILE | NO. |
| T.E. Inc. | T.E. Inc. | 5/93 | 1"=20' | | 3869 | 4 |