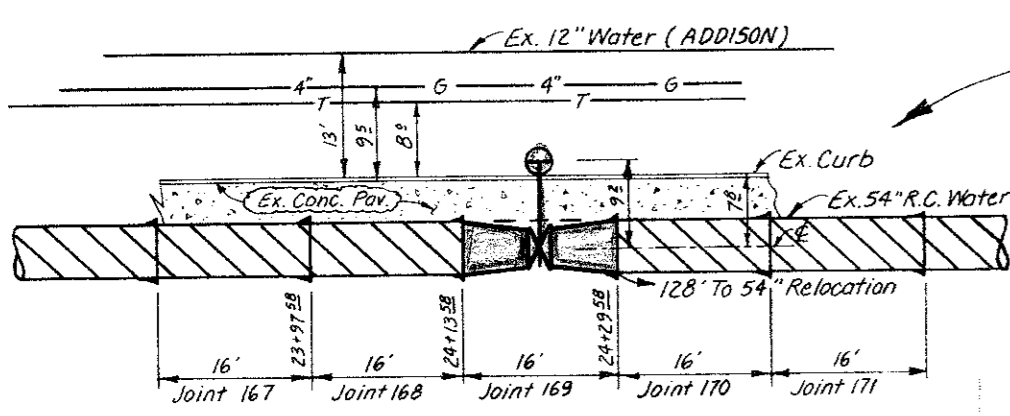


CONT. # 83-613 F

SUMMER-EVANS PRESTONWOOD BANK TOWER PARTNERSHIP
BLOCK 8708-2

CITY OF DALLAS



G.H.A. STA. 167-171
Remove Ex. 16" Joint (Joint # 169)
And Install:
1-54" x 48" Ecc. Reducer (For Flanged End)
1-54" x 48" Ecc. Reducer (For Hub End)
1-48" Horizontal Gate Valve Flg. + H.E.
(DWU Stock # 91-9361)
1-54" Dia. M.H. Over Gate
Valve Installation As Per 414-D-11

48" Valve Detail
Design: J. Waddle
Drawn: C. Pauley
Scale: 1" = 20"
Notes: R. Irons
Contract # 83-613 F
Date: April 30, 1984
Profile Lower Left

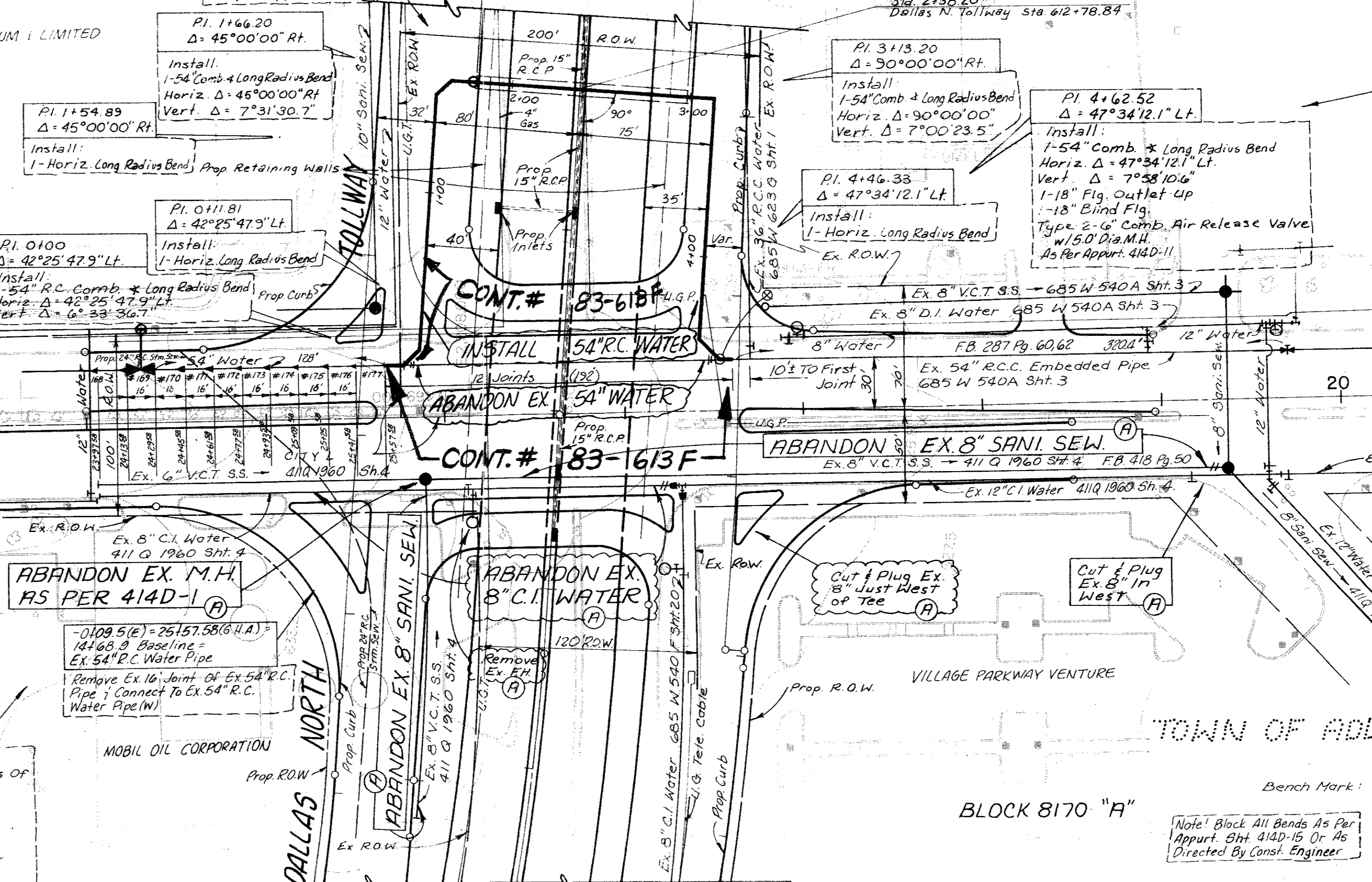
BELT LINE ROAD

BELT LINE ROAD

TOWN OF ADDISON

- NOTE:
2-54" Closure Sections Will Be Required On This Project. Closure Sections Shall Be Located To Accomplish The Following:
1. Leave The 54" Water Line Out Of Service The Shortest Time Possible
2. Test As Much Of The 54" Water Line Relocation As Possible
Contractor Shall Install The Following At Each Location:
1-54" R.C. Closure Section
1-18" Blind Flg.
1-54" Temp Test Plug
W/2" I.P. Thd. Outlet

Note:
Continuous Weld Both Joints Of The Following Bends:
1. 0+00
2. 0+11.81
3. 4+46.33
4. 4+62.52
Provide Heavier Steel Plate For Cylinder In Above Bends To Withstand Thrust Imposed By Welding Joints

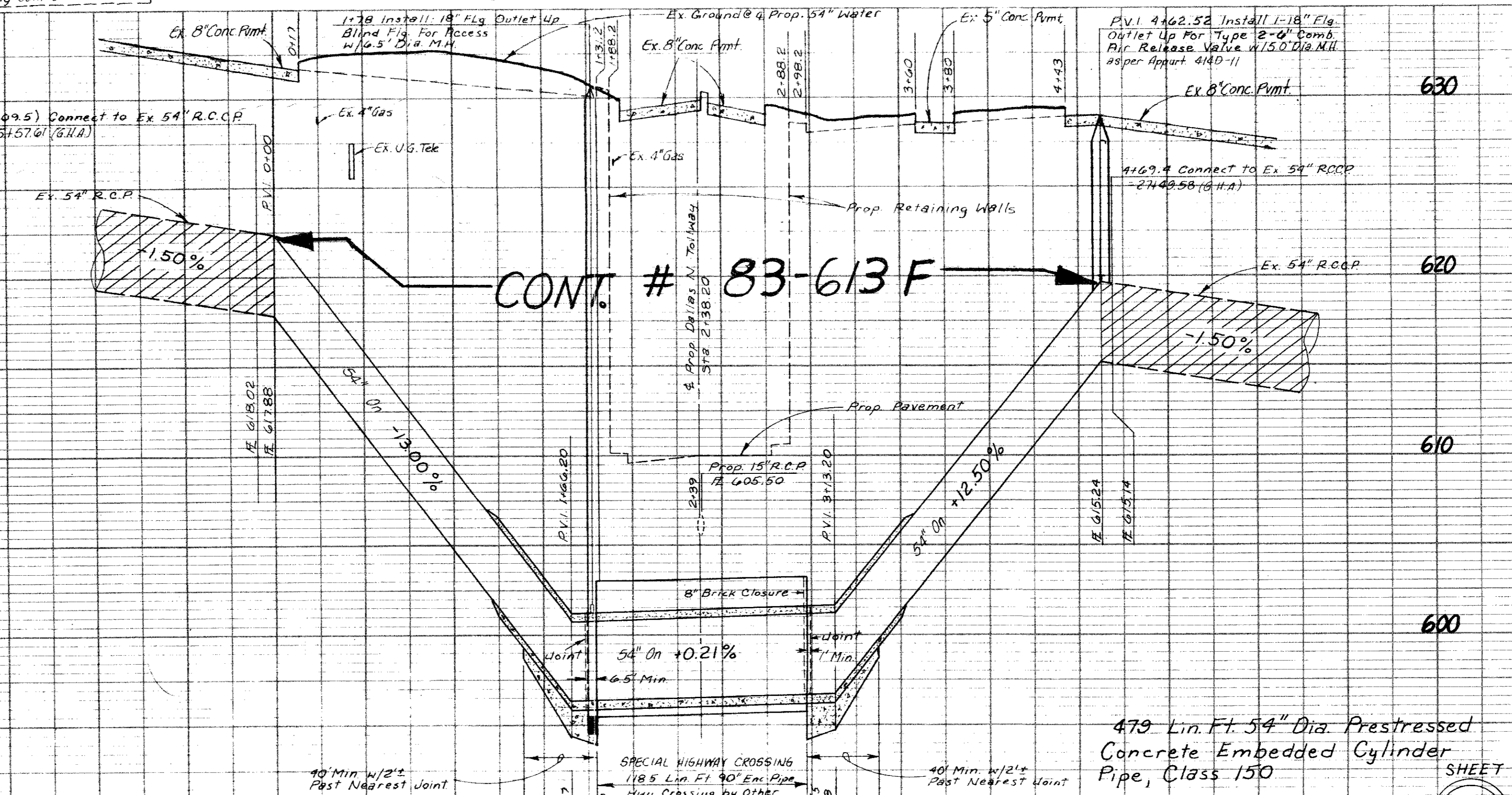
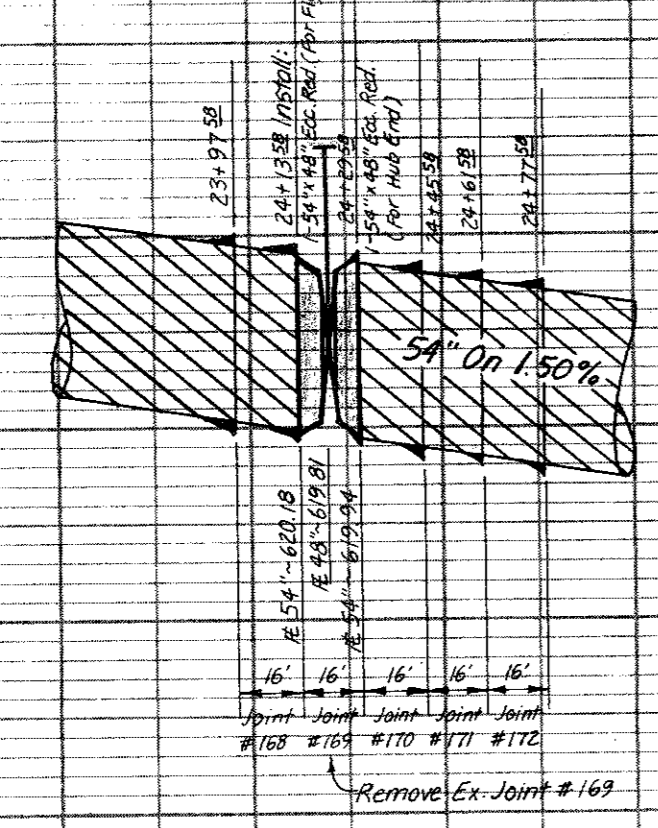


BLOCK 8170 "A"

Bench Mark: Top of Bolt in N.W. Corner of Base Plate for Parking Lot Light Standard 143' East of E. Tollway Sta. 609+26.6 Elev. 630.76
Note: Block All Bends As Per Appurt. Sht 414D-15 Or As Directed By Const. Engineer

DON BOUSE
670-6365

- Highway Crossing (As Per Appurt. Sht 414D-5)
118.5 Lin. Ft. Of 90" Enc. Pipe
1. Construct 8" Thick Brick Closure, with 1/2" Thick Coat of Mortar on the Outside at the Edge of Enc. Pipe Opposite Manhole (When M.H. is Not Reg'd, Low End of Enc. Pipe Shall Be Plugged with Clay).
2. In Tunnel Sections, Voids Between Earth or Rock & Enc. Pipe Shall Be Filled With 1/2 Grout Including 5% to 40% Air Entrained By Pressure Injection, As per Appurt. Sh. 414D-5.
3. Carrier Pipe Shall Be Supported on a Continuous 12" Thick 2000# Conc. Cradle.
4. There Shall Be a Minimum of 2 Hold-Down Jacks per Joint as per Appurt. Sh. 414D-11.
5. Class 150 Embedment Shall Be Used on Enc. Pipe Placed in Rock By Open Cut.
6. Construct Tapered Conc. Tunnel Approach At Each End of Enc. Pipe as per Appurt. Sh. 414D-11.



Designed By: Glenn Hill
TURNER COLLIE & BRADEN, INC. Date 9-22-83
Date 10-4-83
DESIGN APPROVED, ENGINEER RELOCATIONS
DWU. R.O.W. Approval: [Signature] Date 10-5-83
DWU. Contract No. 83-613 F
Work To Be Done By Others

NO.	REVISION	BY	DATE
TEXAS TURNPIKE AUTHORITY DALLAS NORTH TOLLWAY 54" R.C.C. Water Main Relocation BELT LINE ROAD			
Turner Collie & Braden Inc. Consulting Engineers			SECTION VI
DESIGN	DRAWN	DATE	SCALE
J.G.H.	P.A.T.	JULY 1983	1" = 50' H 1" = 5' V
NOTES	T.C.B.B.	FILE	NO.
INC.	411 Q	1909 A	

G.H.A. STA. 24 25

SHEET 16