

G.H.A. STA. ~~167~~
Remove Ex. 16" Joint (Joint # 169)
And Install:
1-54" x 48" Ecc. Reducer (For Flanged End)
1-54" x 48" Ecc. Reducer (For Hub End)
1-48" Horizontal Gate Valve Flg. + H.E.
(DWU Stock # 91-9361)
1-54" Dia. M.H. Over Gate
Valve Installation As Per 414-D-11

48" Valve Detail
Design: J. Waddle
Drawn: C. Pauley
Scale: 1" = 20"
Notes: R. Irons
Contract # 83-613 F
Date: April 30, 1984
Profile Lower Left

BELT LINE ROAD

BELT LINE ROAD

SPECTRUM I LIMITED

PI. 1146.20
Δ = 45°00'00" RT
Install:
1-54" Comb. + Long Radius Bend
Horiz. Δ = 45°00'00" RT
Vert. Δ = 7°31'30.7"

PI. 1154.89
Δ = 45°00'00" RT
Install:
1-Horiz. Long Radius Bend

PI. 0100
Δ = 42°25'47.9" LT
Install:
1-54" R.C. Comb. + Long Radius Bend
Horiz. Δ = 42°25'47.9" LT
Vert. Δ = 6°33'36.7"

PI. 0111.81
Δ = 42°25'47.9" LT
Install:
1-Horiz. Long Radius Bend

PI. 3113.20
Δ = 90°00'00" RT
Install:
1-54" Comb. + Long Radius Bend
Horiz. Δ = 90°00'00" RT
Vert. Δ = 7°00'23.5"

PI. 4146.33
Δ = 47°34'12.1" LT
Install:
1-Horiz. Long Radius Bend

PI. 4162.52
Δ = 47°34'12.1" LT
Install:
1-54" Comb. + Long Radius Bend
Horiz. Δ = 47°34'12.1" LT
Vert. Δ = 7°58'10.6"
1-18" Flg. Outlet up
1-18" Blind Flg.
Type 2-1/2" Comb. Air Release Valve
w/5.0 Dia. M.H.
As Per Appurt. 414D-11

4169.4(E) = 271.49 58(6 H.A.) - 16+60.9 Baseline
Ex 54" R.C. Water Pipe
Remove Ex. 16" Joint of Ex. 54" R.C. Pipe & Connect
to Ex. 54" R.C. Water Pipe (E)

NOTE:
2-54" Closure Sections Will Be Required On This Project.
Closure Sections Shall Be Located To Accomplish
The Following:
1. Leave The 54" Water Line Out Of Service The
Shortest Time Possible
2. Test As Much Of The 54" Water Line Relocation
As Possible
Contractor Shall Install The Following At Each Location:
1-54" R.C. Closure Section
1-18" Flange Outlet Up
1-18" Blind Flg.
1-54" Temp Test Plug
w/2" I.P. Thd. Outlet

TOWN OF ADDISON

Note:
Continuous Weld Both Joints Of
The Following Bends:
1. 0100
2. 0111.81
3. 4146.33
4. 4162.52
Provide Heavier Steel Plate For Cylinder
In Above Bends To Withstand Thrust
Imposed By Welding Joints

ABANDON EX. M.H.
RS PER 414D-1

CONT. # 83-613 F

ABANDON EX. 8" SANI. SEW.

ABANDON EX. 8" C.I. WATER

ABANDON EX. 8" SANI. SEW.

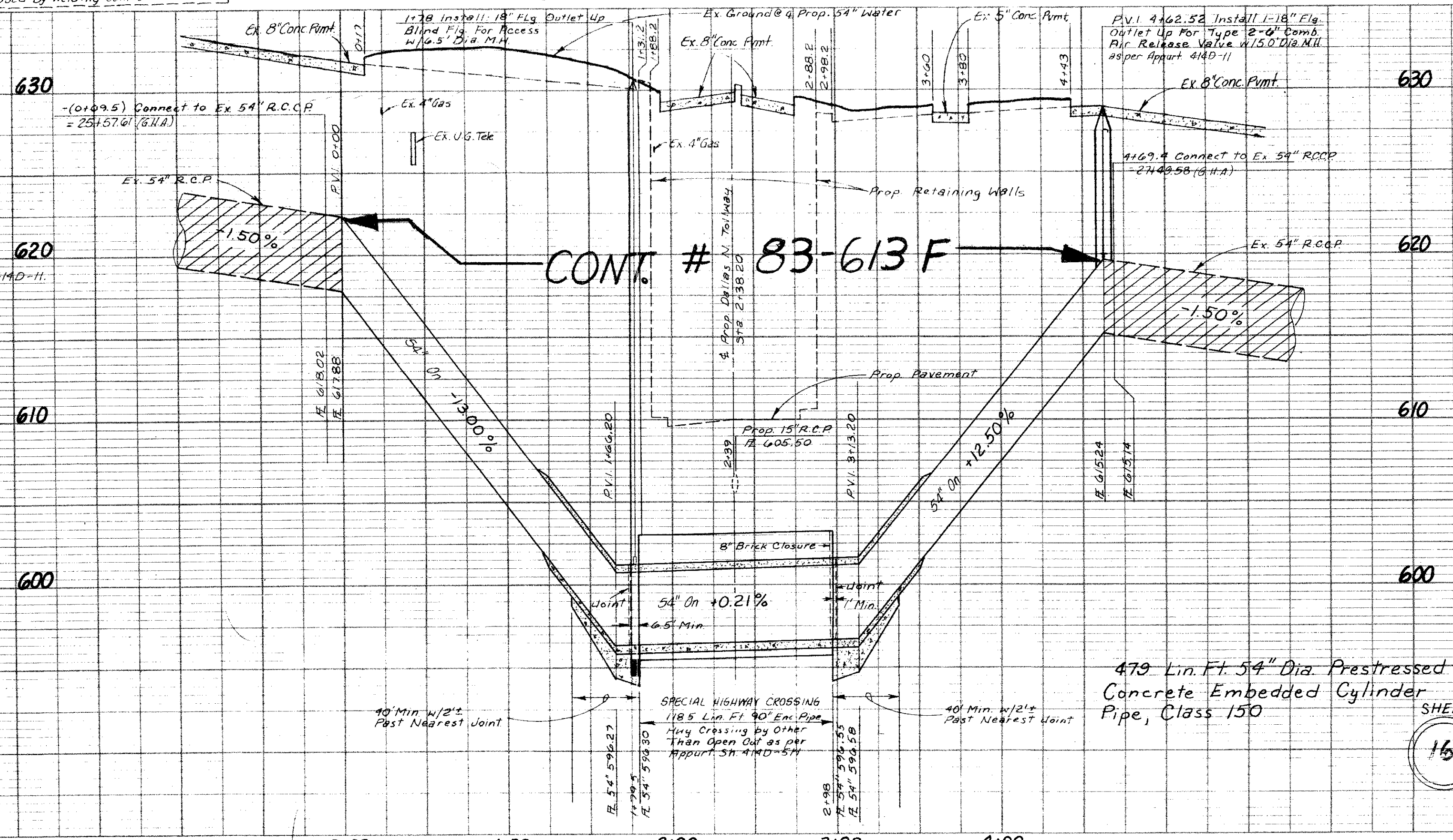
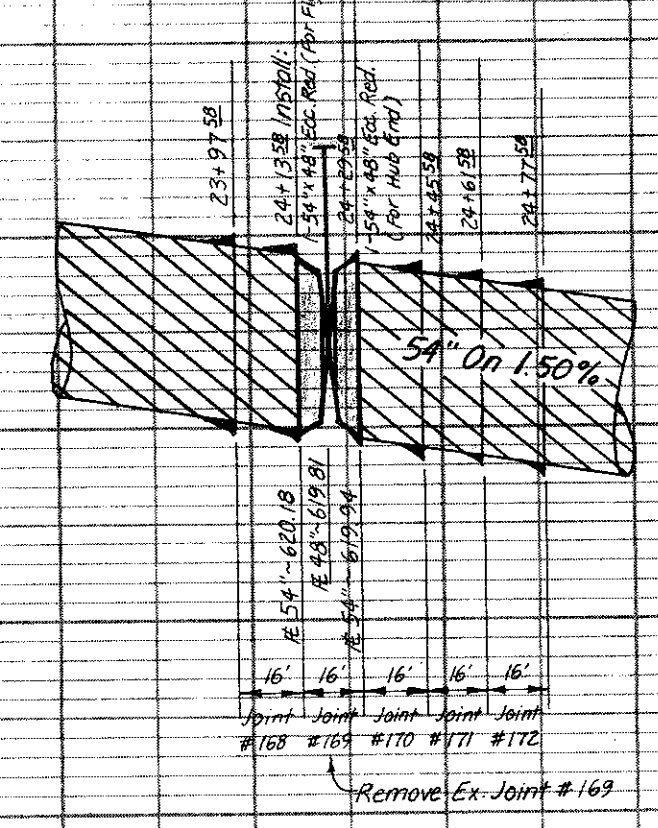
ABANDON EX. 8" C.I. WATER

BLOCK 8170 "A"

Bench Mark:
Top of Bolt in N.W. Corner of Base
Plate for Parking Lot Light Standard
143' East of E. Tollway Sta. 609+26.6
Elev. 630.76

Don Bouse
670-6365

Highway Crossing (As Per Appurt. Sht. 414D-5H)
118.5 Lin. Ft. Of 90" Enc. Pipe
1. Construct on 8" Thick Brick Closure, with 1/2" Thick Coat of Mortar on the Outside
at the Edge of Enc. Pipe Opposite Manhole (When M.H. is not Reg'd. Low End
of Enc. Pipe Shall Be Plugged with Clay.)
2. In Tunnel Sections, Voids Between Earth or Rock & Enc. Pipe Shall Be Filled
with 1/2 Grout Including 5% to 10% Air Entrained By Pressure Injection,
As per Appurt. Sh. 414D-5.
3. Carrier Pipe Shall Be Supported on a Continuous 1/2" Thick 2000# Conc. Cribble
4. There Shall Be a Minimum of 2 Hold-Down Jacks per Joint as per Appurt. Sh. 414D-11.
5. Class 10 Embedment Shall Be Used on Enc. Pipe Placed in Rock By Open Cut.
6. Construct Tapered Conc. Tunnel Approach At Each End of Enc. Pipe as per
Appurt. Sh. 414D-11.



Designed By: Glenn Hill
TURNER COLLIE & BRADEN, INC. Date 9-22-83
Date 10-4-83
DESIGN APPROVED, ENGINEER RELOCATIONS
DWU, R.O.W. Approval: [Signature] Date 10-5-83
DWU Contract No. 83-613 F
Work To Be Done By Others

NO.	REVISION	BY	DATE			
TEXAS TURNPIKE AUTHORITY DALLAS NORTH TOLLWAY 54" R.C.C. Water Main Relocation BELT LINE ROAD Turner Collie & Braden Inc. SECTION VI Consulting Engineers						
DESIGN	DRAWN	DATE	SCALE	NOTES	FILE	NO.
J.G.H.	P.A.T.	JULY 1983	1" = 50' H 1" = 5' V	T.C.B.B. INC.	411 Q	1909 A