

● EXISTING WOOD POLE LOCATION

NOTE:

1. CONTRACTOR SHALL VERIFY THE LOCATION OF ALL EXISTING UNDERGROUND UTILITIES.
2. ALL CONSTRUCTION MUST COMPLY WITH CITY OF ADDISON EXCAVATION ORDINANCE.
3. ALL CONSTRUCTION SHALL BE IN ACCORDANCE WITH TEXAS POWER & LIGHT COMPANY CENTRAL DIVISION ENGINEERING "SPECIFICATIONS FOR DUCT SYSTEM INSTALLATION." JULY 15, 1985

BELTLINE ROAD-BELTWOOD PUMP-ADDISON ROAD

UNDERGROUND DISTRIBUTION
KEY SHEET

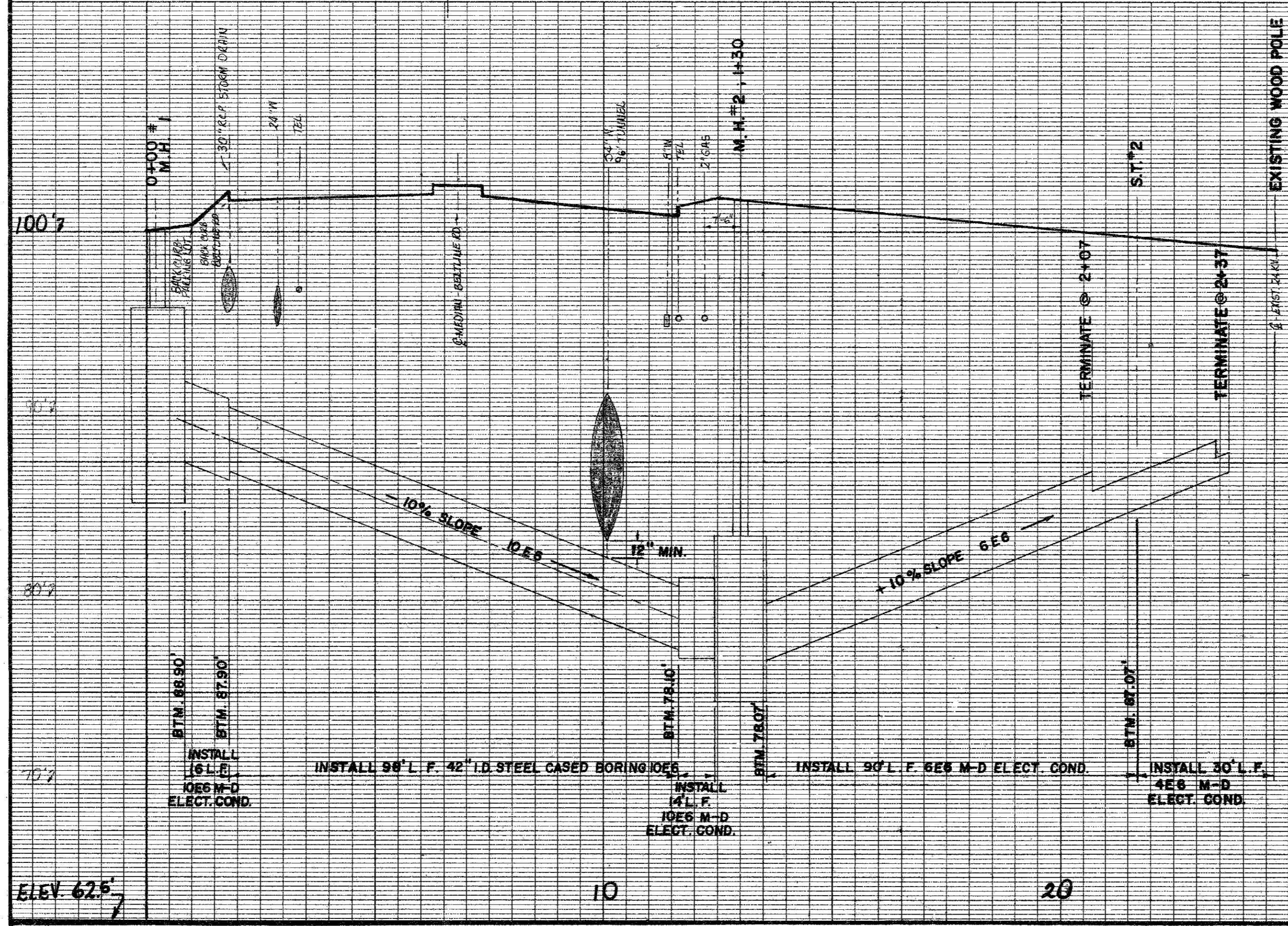
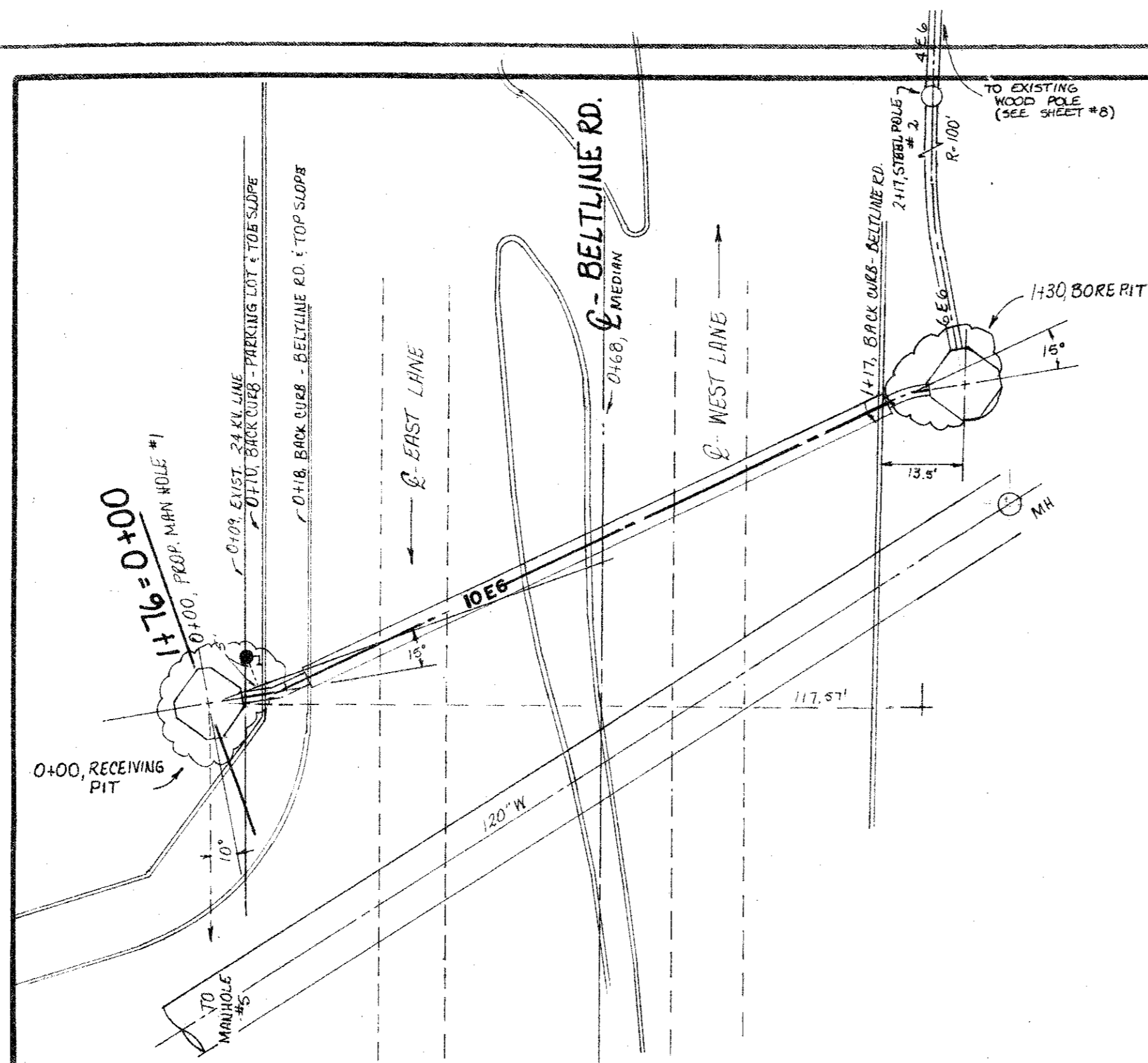
TD 57711

SHEET 1

DATE	REVISION	BY	CHK	APP.

TEXAS POWER & LIGHT CO.		DR. P.R.	APPROVED
DALLAS		CH. <i>M. S. ...</i>	
SCALE NONE		ENGR. <i>[Signature]</i>	VICE PRESIDENT - ENGINEERING
DATE 10-24-85			

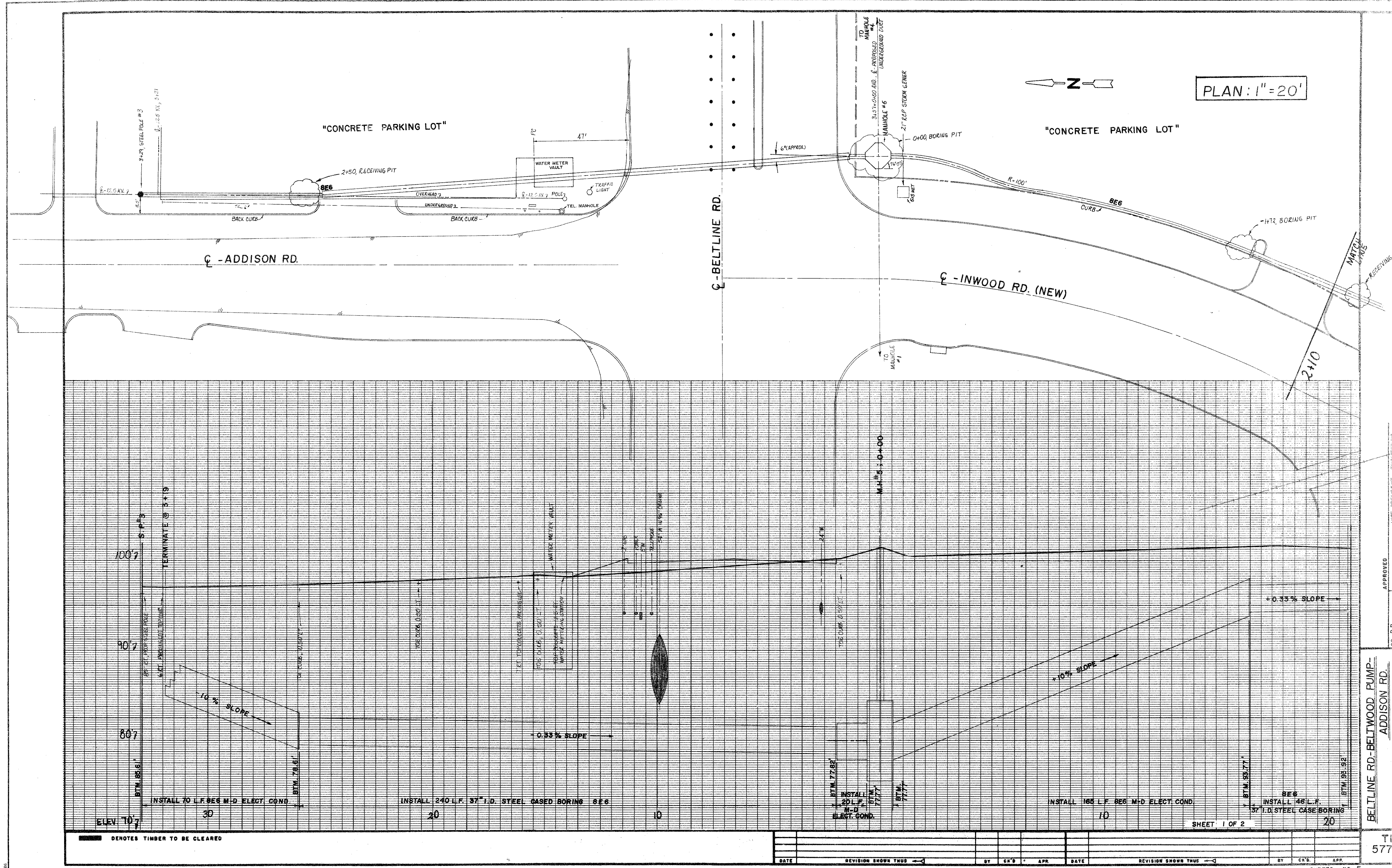
8-24



███ DENOTES TIMBER TO BE CLEARED

NO.	REVISION SHOWN THUS	BY	CHK'D	APP.	DATE	REVISION SHOWN THUS	BY	CHK'D	APP.	DATE

BELTLINE RD.-BELTWOOD PUMP-
 ADDISON RD.
 LINE C
 DATE 11-19-85
 SCALE: 1"=20'
 TERRY POWERS & LIGHT CONSULTANTS
 VICE PRESIDENT - ENGINEERING
 SHEETS NO. 4



PLAN: 1" = 20'



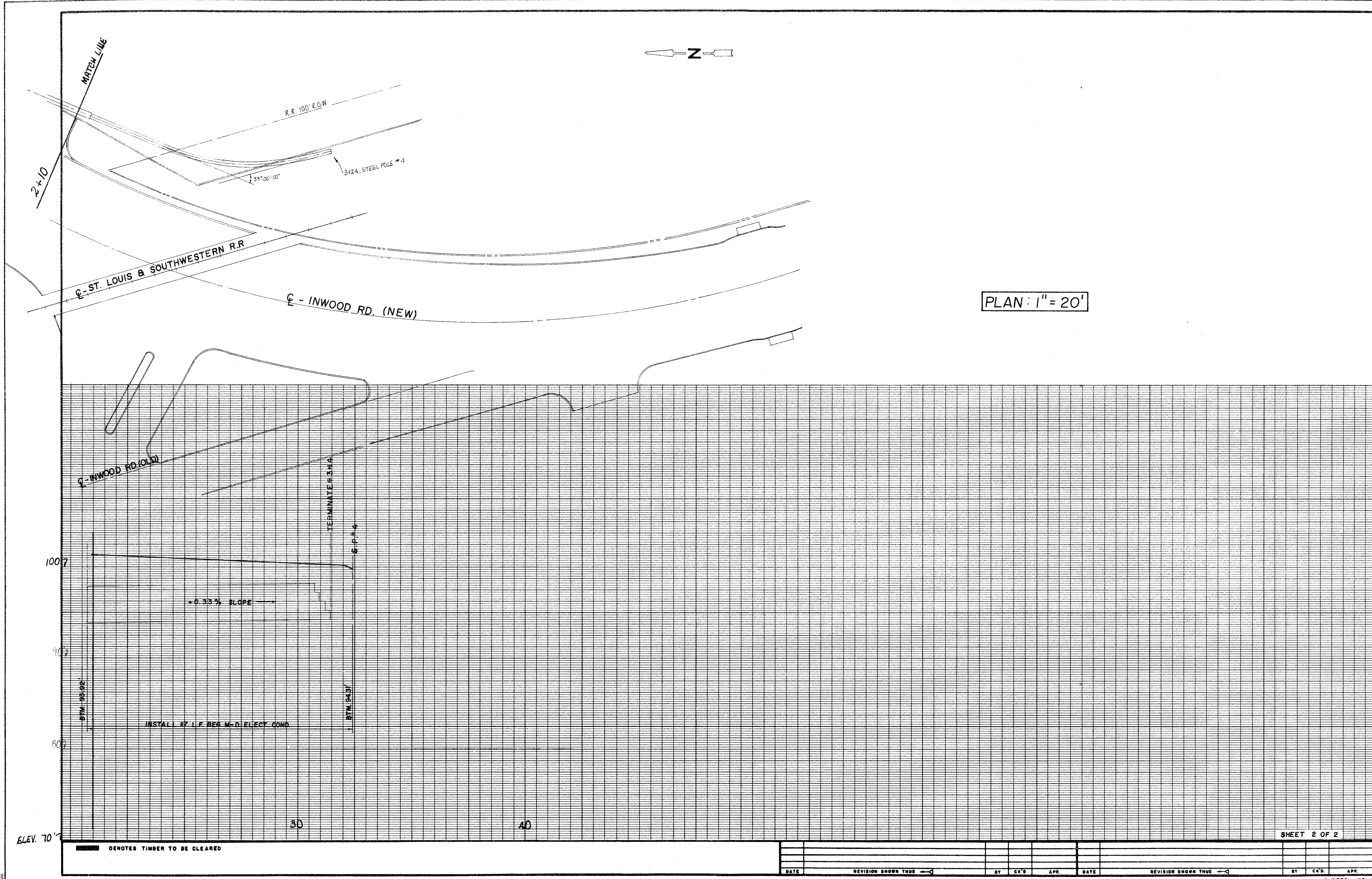
■ DENOTES TIMBER TO BE CLEARED

DATE	REVISION SHOWN THIS	BY	CR'D	APP.	DATE	REVISION SHOWN THIS	BY	CR'D	APP.

BELTLINE RD-BELTWOOD PUMP-
ADDISON RD.
LINE D
DATE 11-19-85
SCALE: AS SHOWN
SHEETS NO. 5
T.D. 57711

SHEET 1 OF 2

RS-2



PLAN: 1" = 20'

███ DENOTES TIMBER TO BE CLEARED

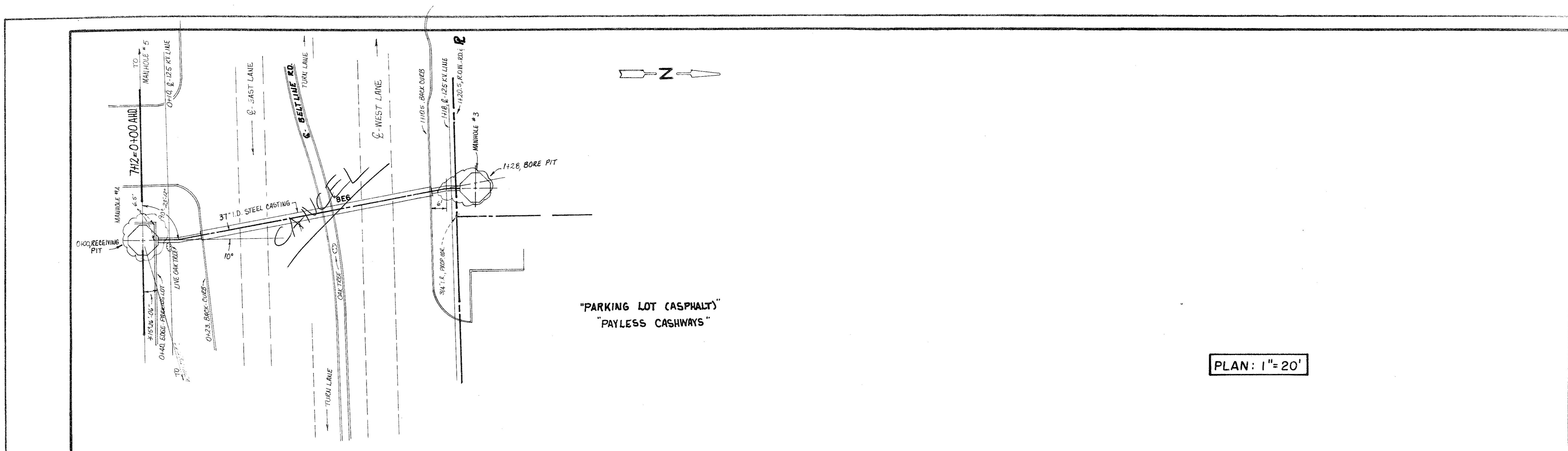
DATE	REVISION SHOWN THUS	BY	CHK'D	APP.	DATE	REVISION SHOWN THUS	BY	CHK'D	APP.

BELLINE RD.-BELTWOOD PUMP-
 ADDISON RD.
 LINE D
 DATE 11-19-85
 SCALE 1" = 20'
 DR. P. R. [Signature]
 VICE PRESIDENT - ENGINEERING
 APPROVED
 T. D. [Signature]
 SHEETS NO. 6
 TEXAS POWER & LIGHT COMPANY

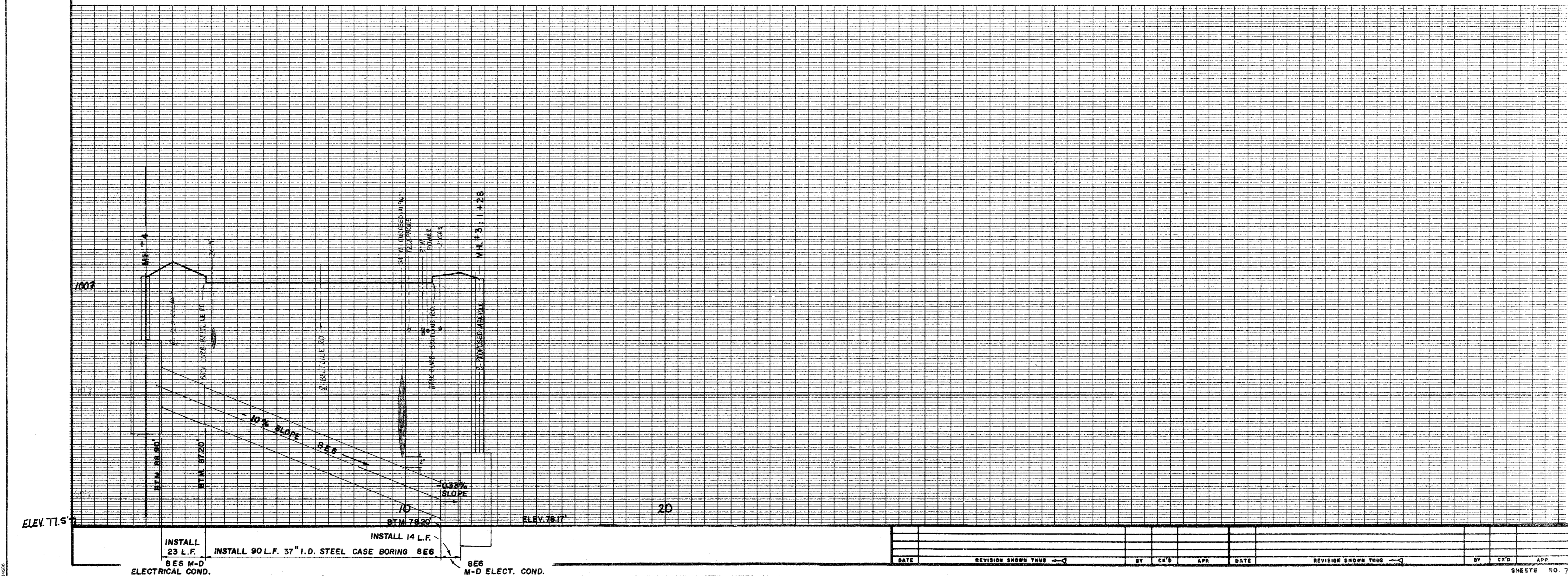
TD
57711

SHEET 2 OF 2

SHEETS NO. 6



PLAN: 1" = 20'

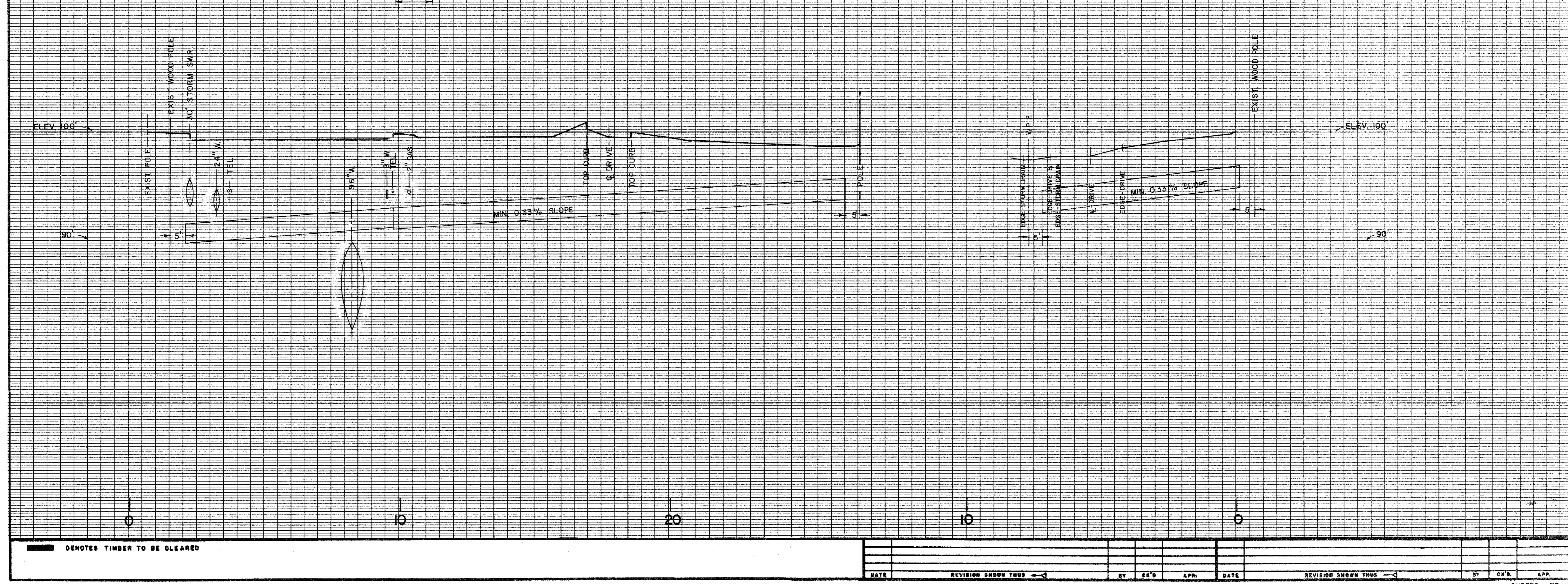
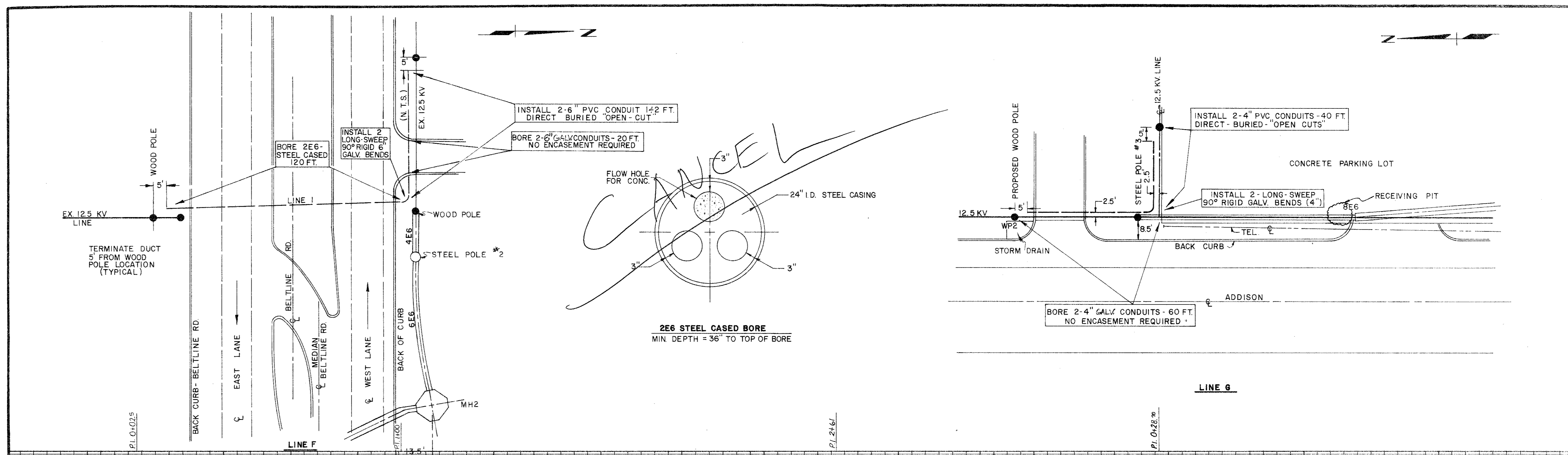


INSTALL 23 L.F. 8ES M-D ELECTRICAL COND.
 INSTALL 90 L.F. 37" I.D. STEEL CASE BORING 8ES
 INSTALL 14 L.F. 8ES M-D ELECTRICAL COND.

DATE	REVISION SHOWS THIS	BY	CHK'D	APP.	DATE	REVISION SHOWS THIS	BY	CHK'D	APP.

BELTLINE RD. - BELTWOOD PUMP
 ADDISON RD.
 LINE E
 SCALE: 1" = 20'
 SHEETS NO. 7

TD 57711



REVISION TABLE

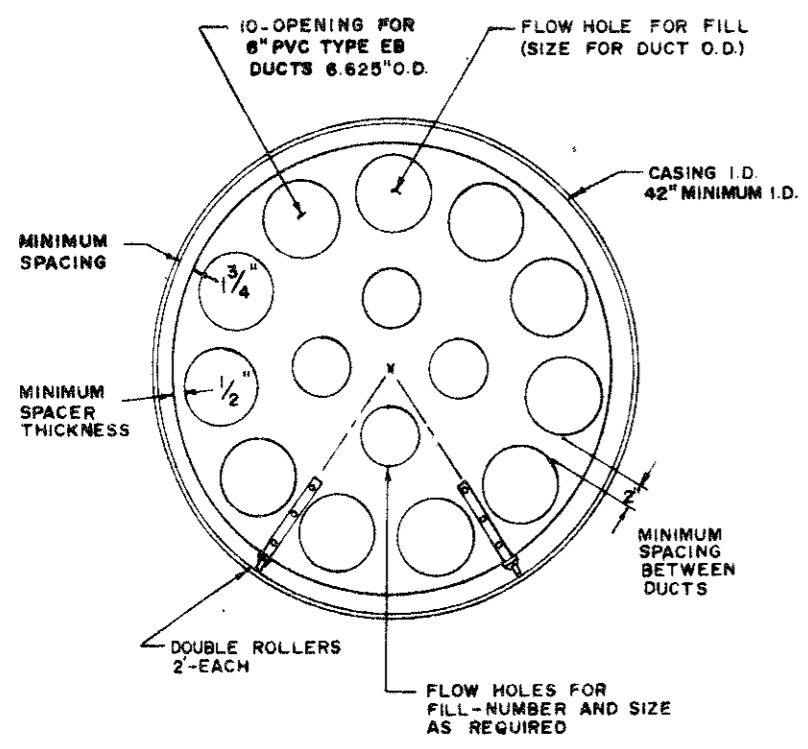
NO.	DATE	REVISION SHOWN THUS	BY	CHK'D	APP.	DATE	REVISION SHOWN THUS	BY	CHK'D	APP.

APPROVED
 DR. BRIAN B. [Signature]
 VICE PRESIDENT - ENGINEERING

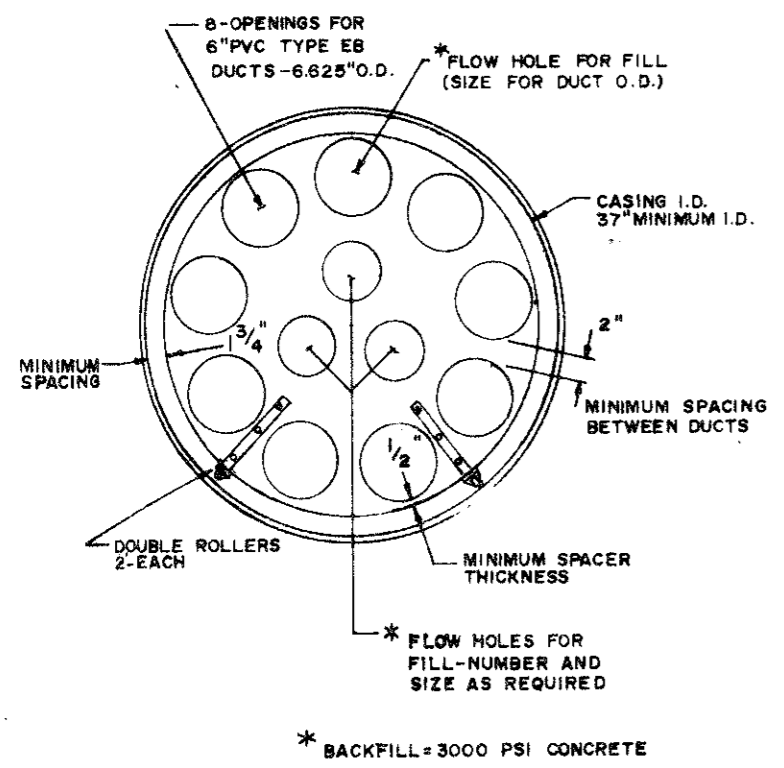
DATE: 1-27-86
 SCALE: 1" = 40'
 SHEETS: 1 OF 1

TD
 57776

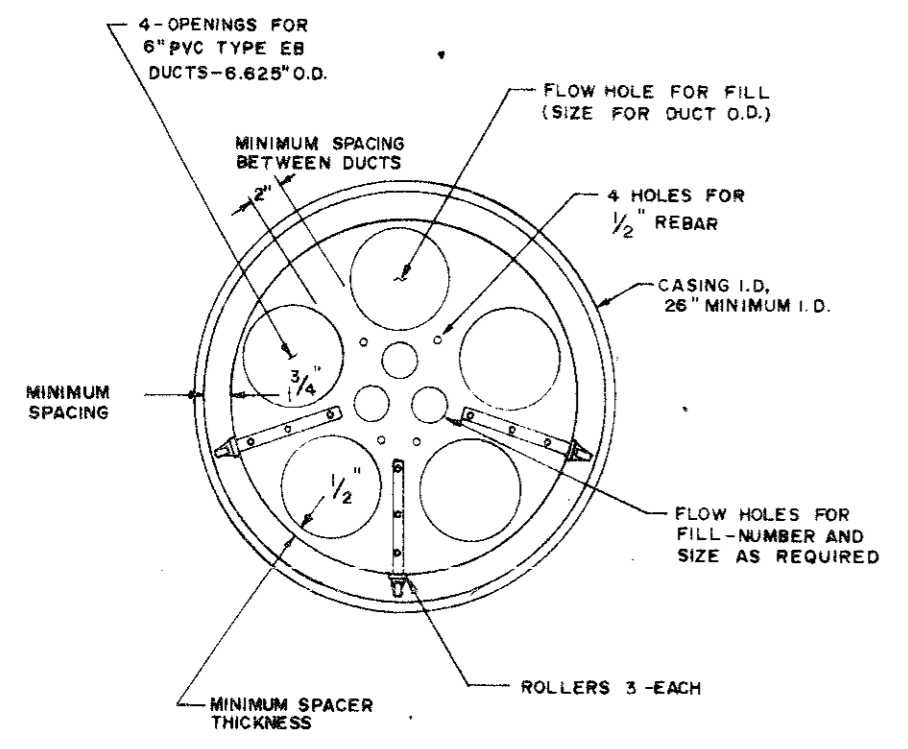
SHEETS NO.



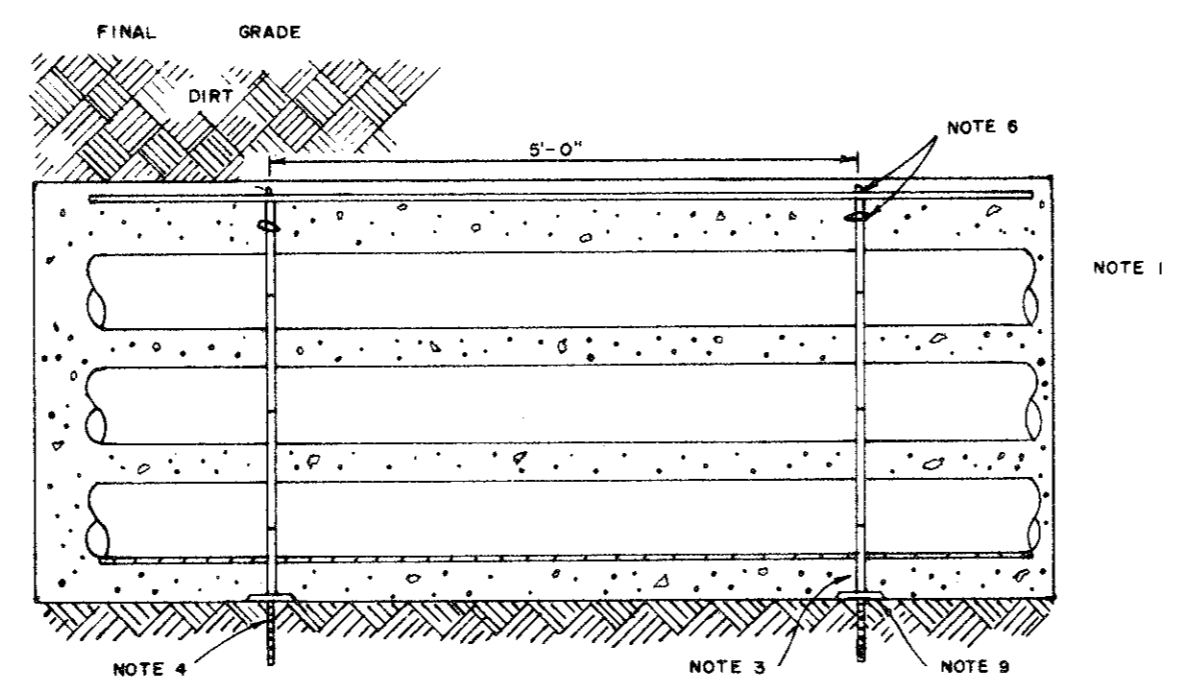
BORE SPACER FOR 10-6" PVC DUCTS



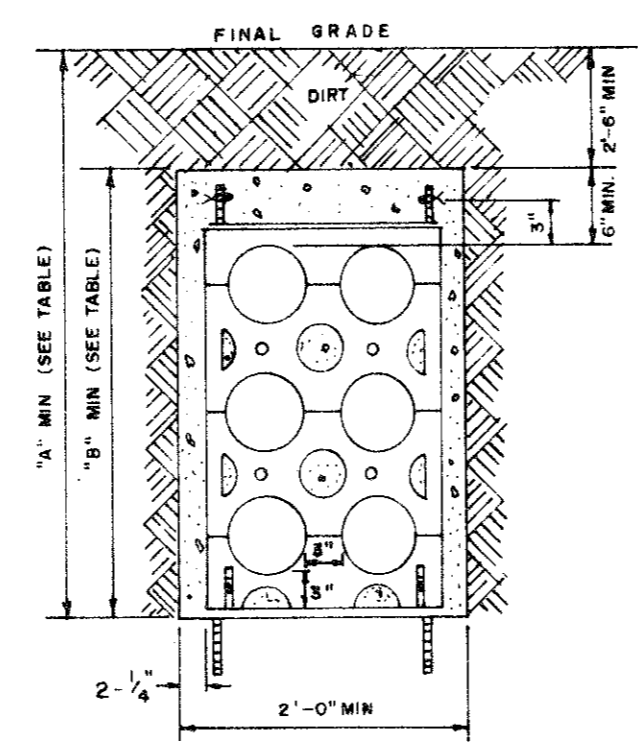
BORE SPACER FOR 8-6" PVC DUCTS



BORE SPACER FOR 4-6" PVC DUCTS



SECTION OF TRENCH

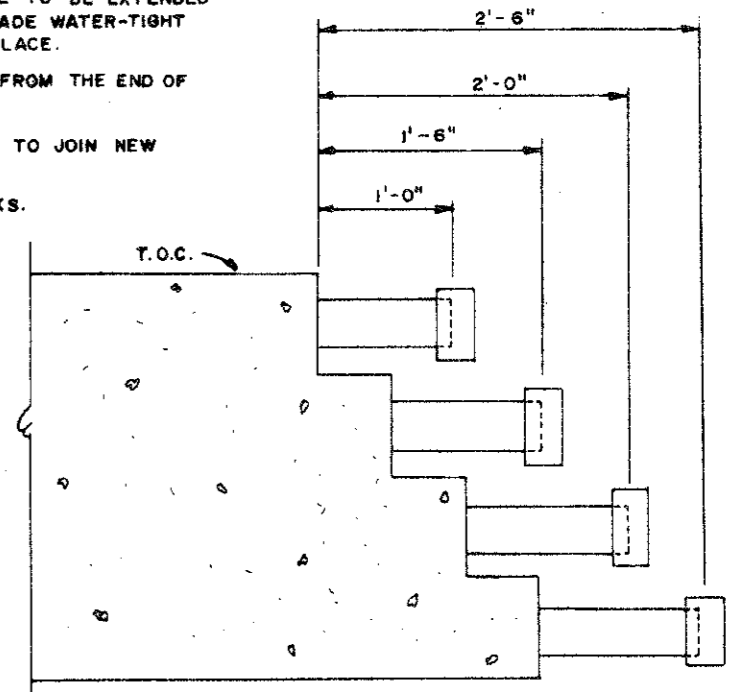


END VIEW OF TRENCH

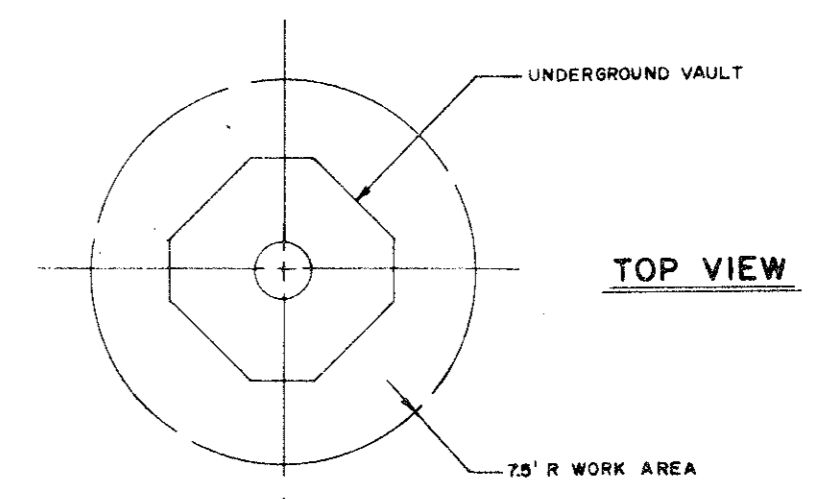
- NOTES:
- CONDUIT TO BE 6" PVC TYPE EB OR SCHEDULE 40 WITH O.D. OF 6.625"
 - CONCRETE ENCASMENT-ALL CONCRETE TO HAVE A MIN. COMPRESSIVE STRENGTH OF 3000 PSI AT TWENTY-EIGHT (28) DAYS.
 - INSTALL SPACER EVERY 5 FEET. ALL SPACERS TO PROVIDE 3" VERTICAL AND HORIZONTAL SEPARATION BETWEEN CONDUITS.
 - INSTALL #4 STEEL REINFORCING RODS THROUGH THE INTERNAL VERTICAL CHANNELS AT BOTH OUTER EDGES OF SPACERS AND DRIVE REINFORCING RODS INTO EARTH TO ANCHOR ASSEMBLY.
 - INSTALL #4 STEEL REINFORCING RODS ACROSS TOP OF CAP AND IN EACH CORNER OF THE ENCASMENT.
 - TIE HORIZONTAL AND VERTICAL RODS TOGETHER WITH #16 STEEL TIE WIRE.
 - CONDUIT RUN BETWEEN MANHOLES TO BE INSTALLED WITH A MINIMUM SLOPE OF 4" PER 100 FEET AND A MAXIMUM SLOPE OF 10 FT. PER 100 FEET TO DRAIN THROUGHOUT ITS ENTIRE LENGTH INTO MANHOLES.
 - INSTALL 6" GALV. CONDUIT BENDS AND ADAPTERS ON ANGLES GREATER THAN 15°.
 - BASE PADS FOR SPACERS ARE REQUIRED IN SANDY OR LOOSE SOIL.

DIMENSION	2E6	4E6	6E6	8E6	10E6
A (MIN)	3'-10"	4'-8"	5'-6"	6'-4"	7'-2"
B (MIN)	1'-4"	2'-2"	3'-0"	3'-10"	4'-8"

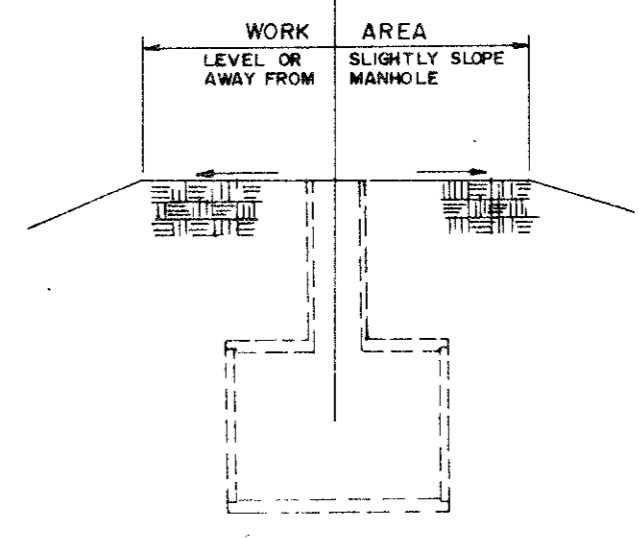
- INCOMPLETE DUCT LINE**
- ON ALL INCOMPLETE DUCT LINES, (DUCTS THAT ARE TO BE EXTENDED AT A FUTURE TIME) THE CONDUITS ARE TO BE MADE WATER-TIGHT WITH A CONDUIT CAP SOLVENT CEMENTED INTO PLACE.
 - NO EXPOSED REINFORCING STEEL IS TO PROTRUDE FROM THE END OF AN UNFINISHED DUCT.
 - DOWELLING IS THE METHOD TO BE USED IN ORDER TO JOIN NEW DUCT TO EXISTING UNFINISHED DUCT.
 - SPACING IS TYPICAL FOR 8E6 AND 4E6 DUCT BANKS.
 - 3'-6" MINIMUM COVER TO T.O.C.



8E6 INCOMPLETE DUCT

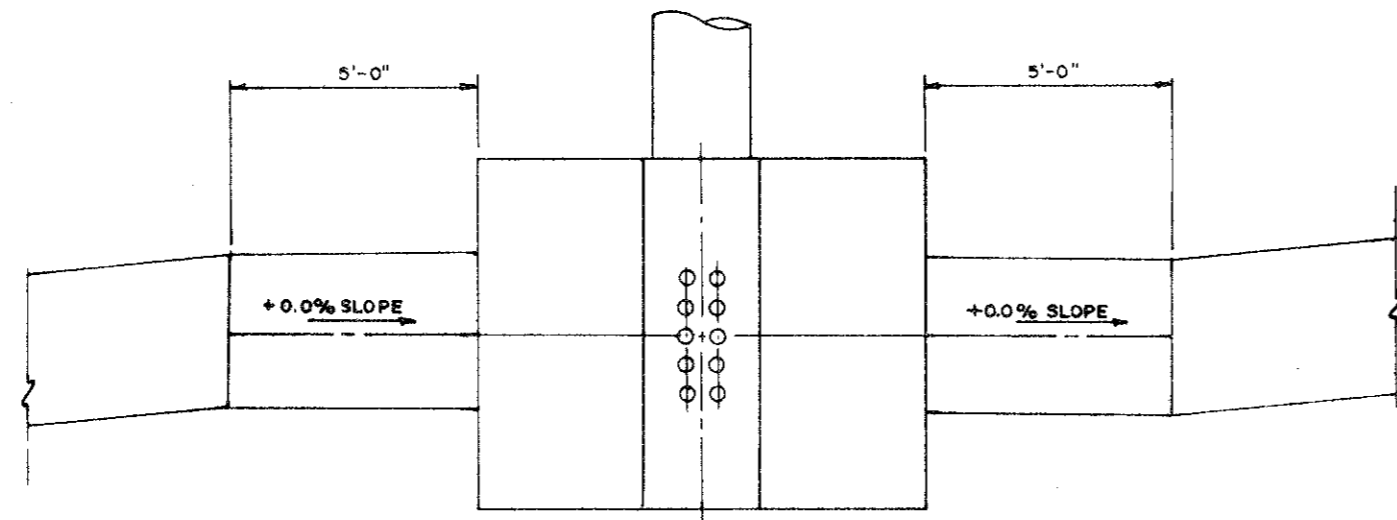


TOP VIEW



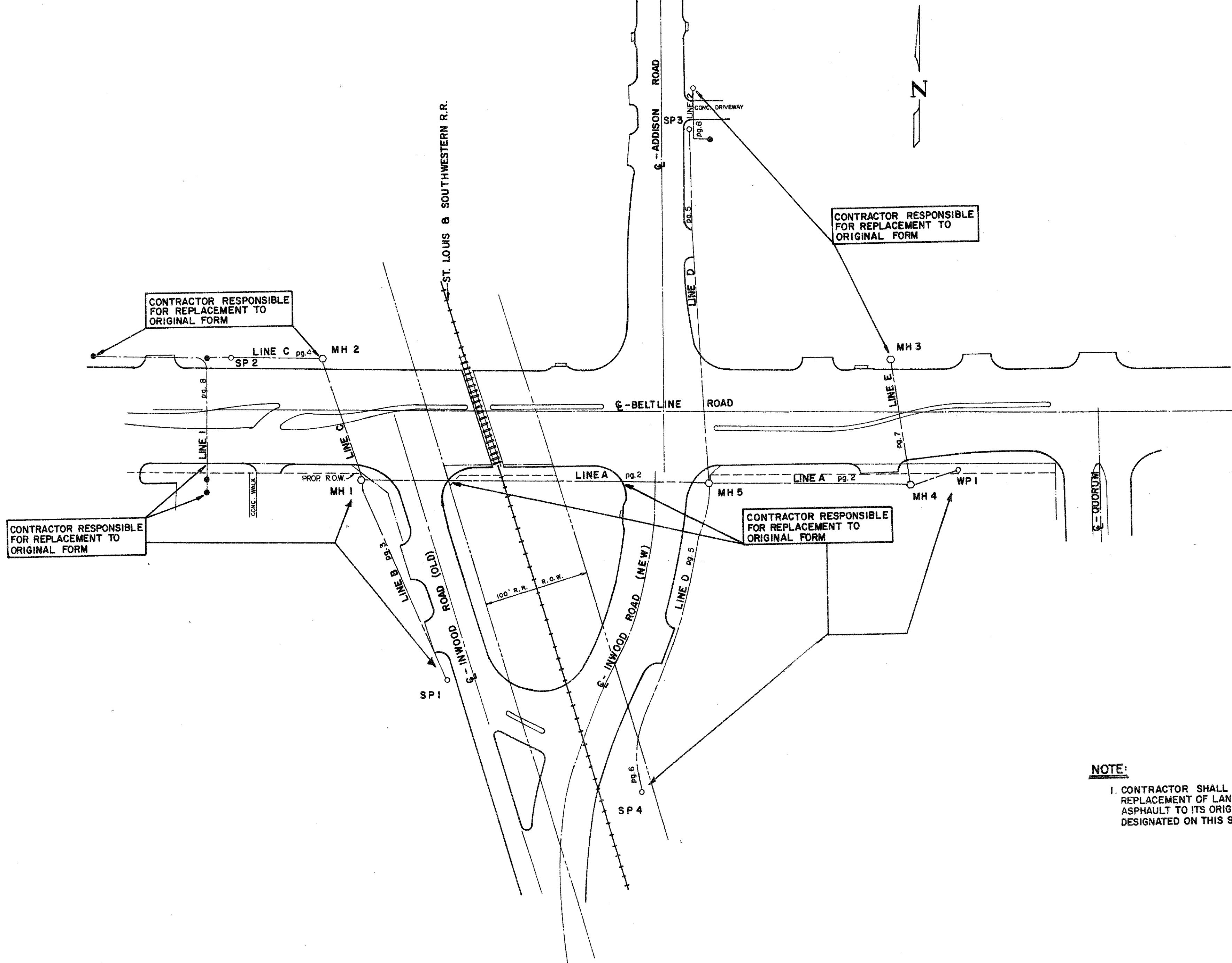
SIDE VIEW

TYPICAL MANHOLE WORK AREA



**MAXIMUM ALLOWABLE SLOPE INTO MANHOLE IS 0.0%
MANHOLE APPROACH PROFILE DETAIL**

DATE	REVISION	BY	CHK.	APP.



NOTE:
 1. CONTRACTOR SHALL BE RESPONSIBLE FOR THE REPLACEMENT OF LANDSCAPING, CONCRETE, AND ASPHALT TO ITS ORIGINAL FORM IN THE AREAS DESIGNATED ON THIS SHEET.

BELTLINE ROAD-BELTWOOD PUMP-ADDISON ROAD

SHEET 11

TD

B-34

APP.	
CH.	
BY	
REVISION	
DATE	

TEXAS POWER & LIGHT CO.
 DALLAS
 SCALE NONE
 DATE: 2-16-86
 DR. John G. APPROVED
 CH. M. Sulak
 CORR. [Signature]
 ENGR. VICE PRESIDENT-ENGINEERING