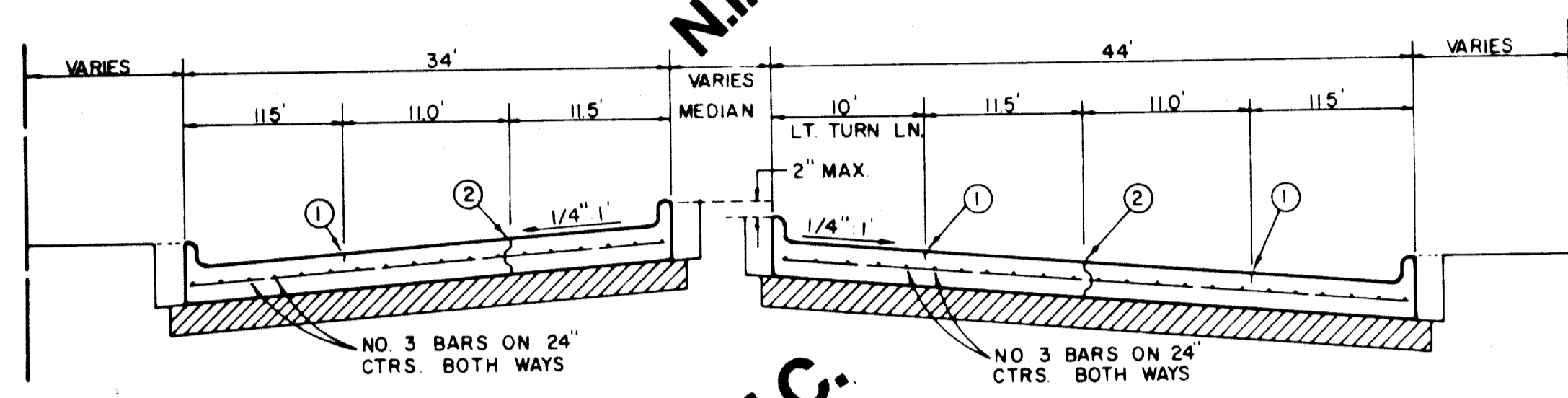
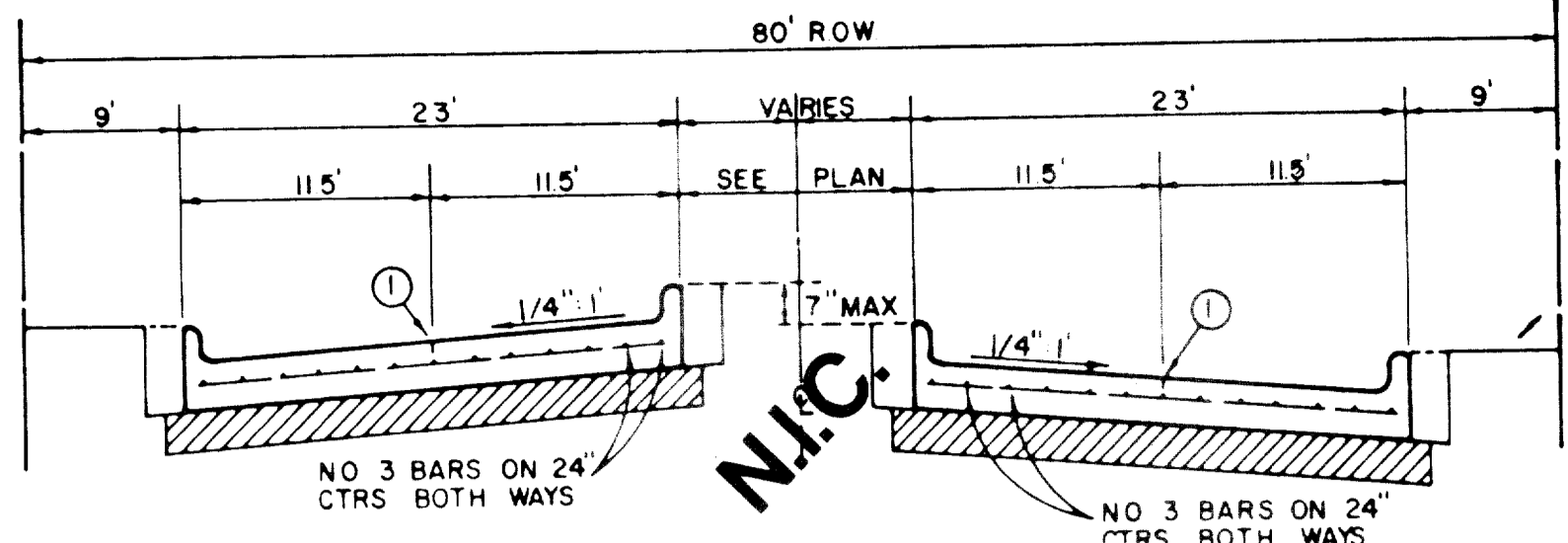


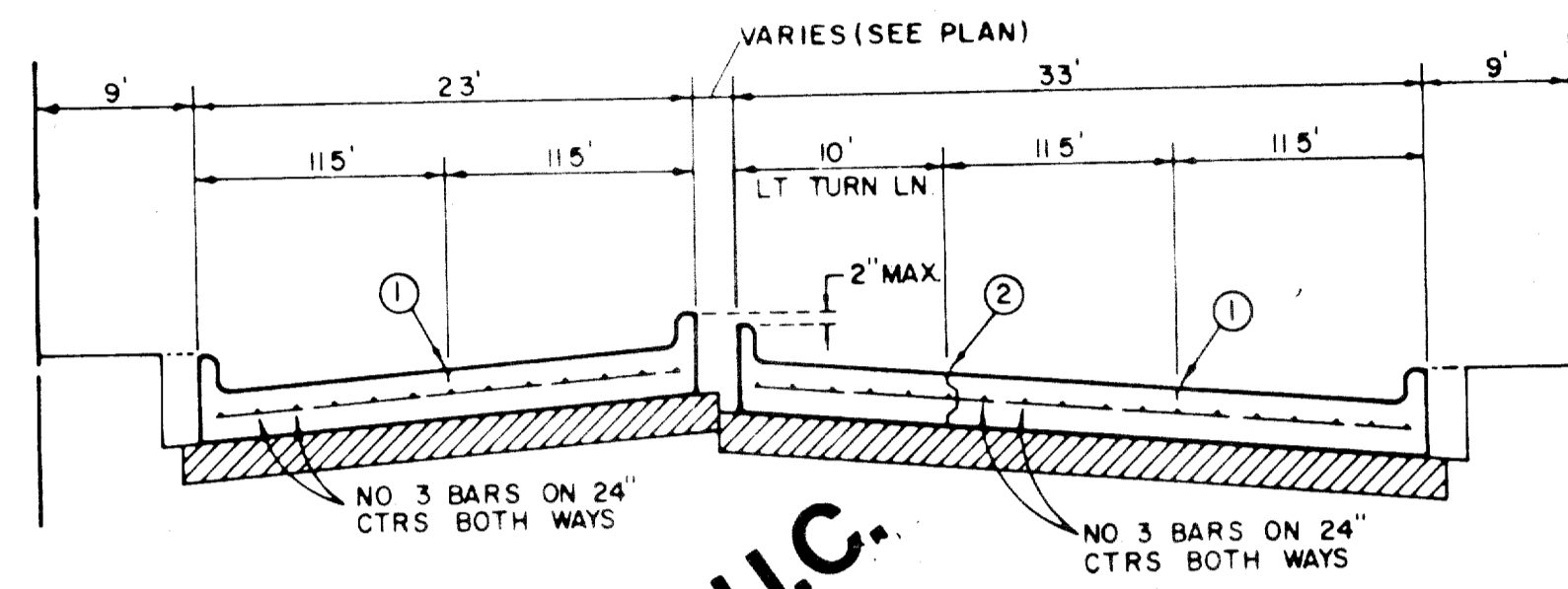
REGULAR SECTION



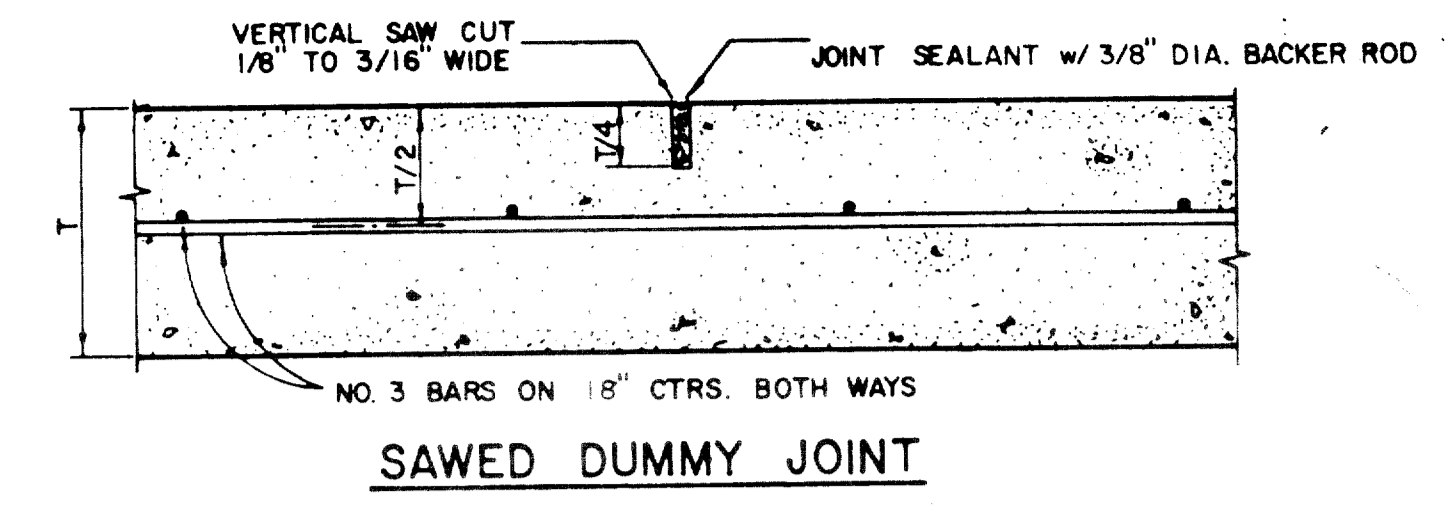
LEFT TURN SECTION
MAJOR ARTERIAL



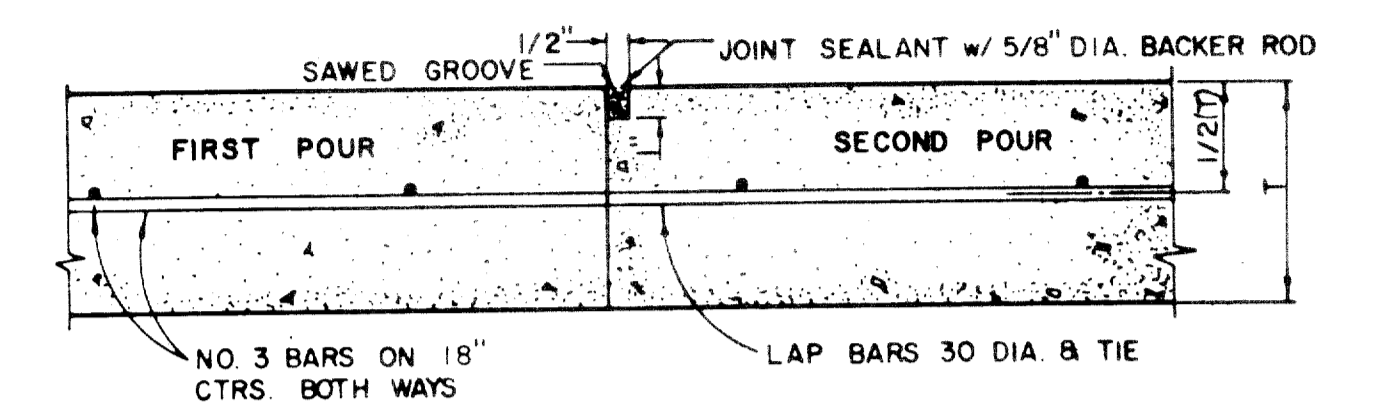
REGULAR SECTION



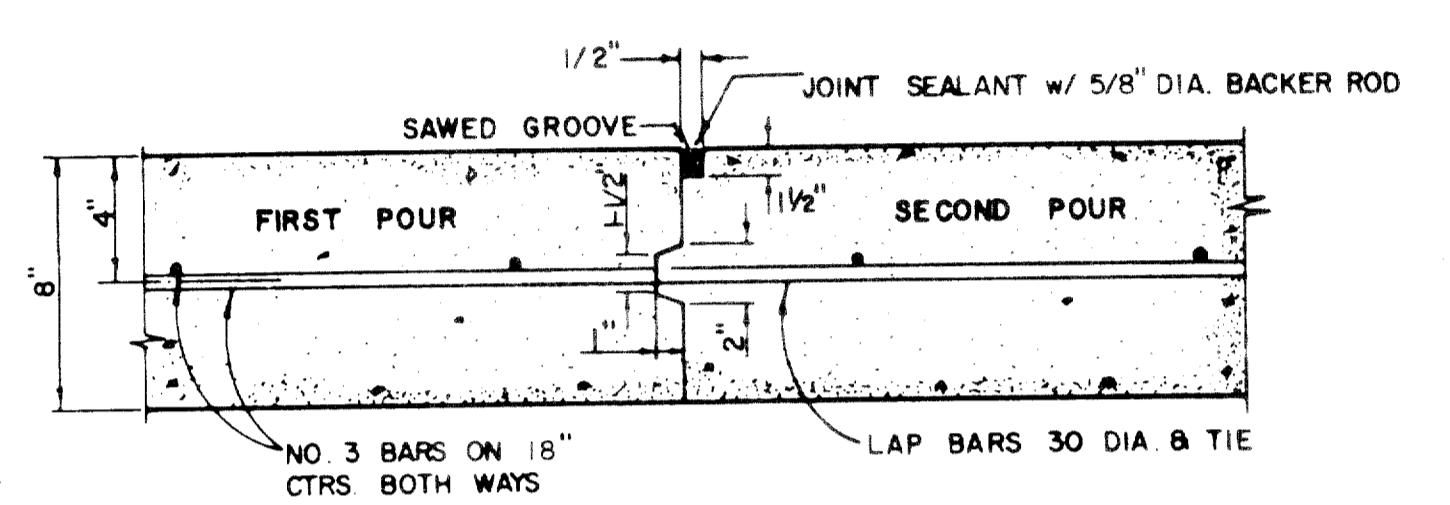
LEFT TURN SECTION
MINOR ARTERIAL



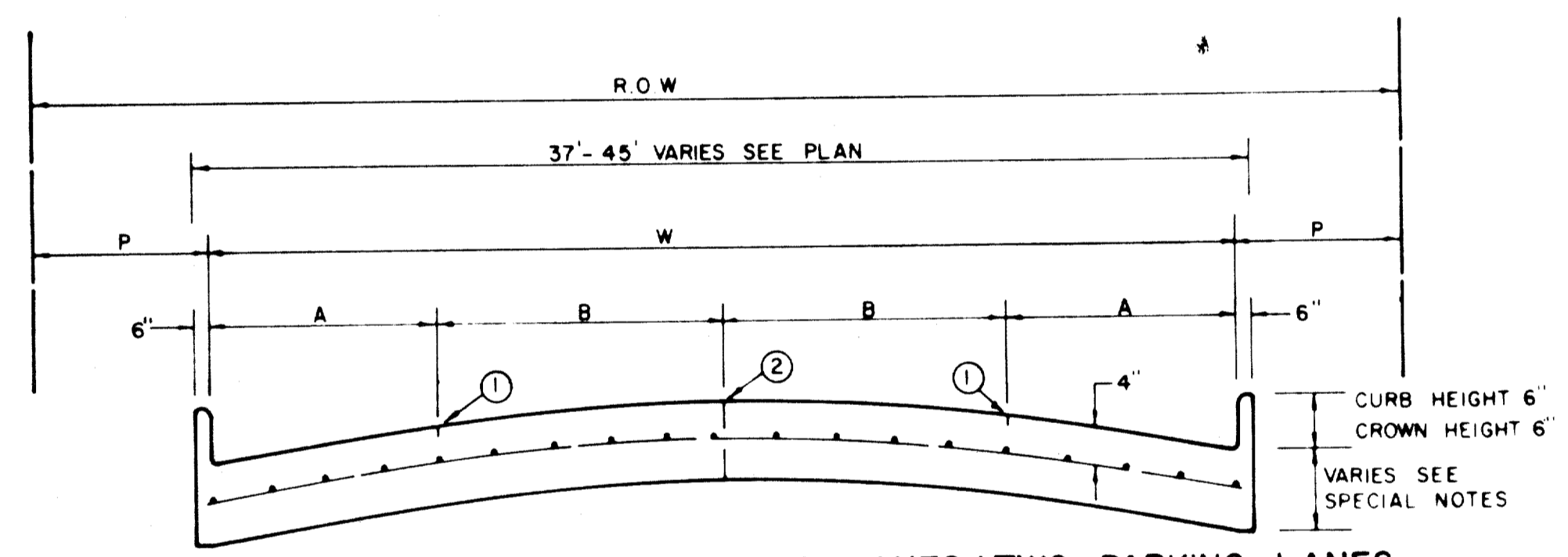
SAWED DUMMY JOINT



CONSTRUCTION JOINT FOR 6 INCH PAVEMENT



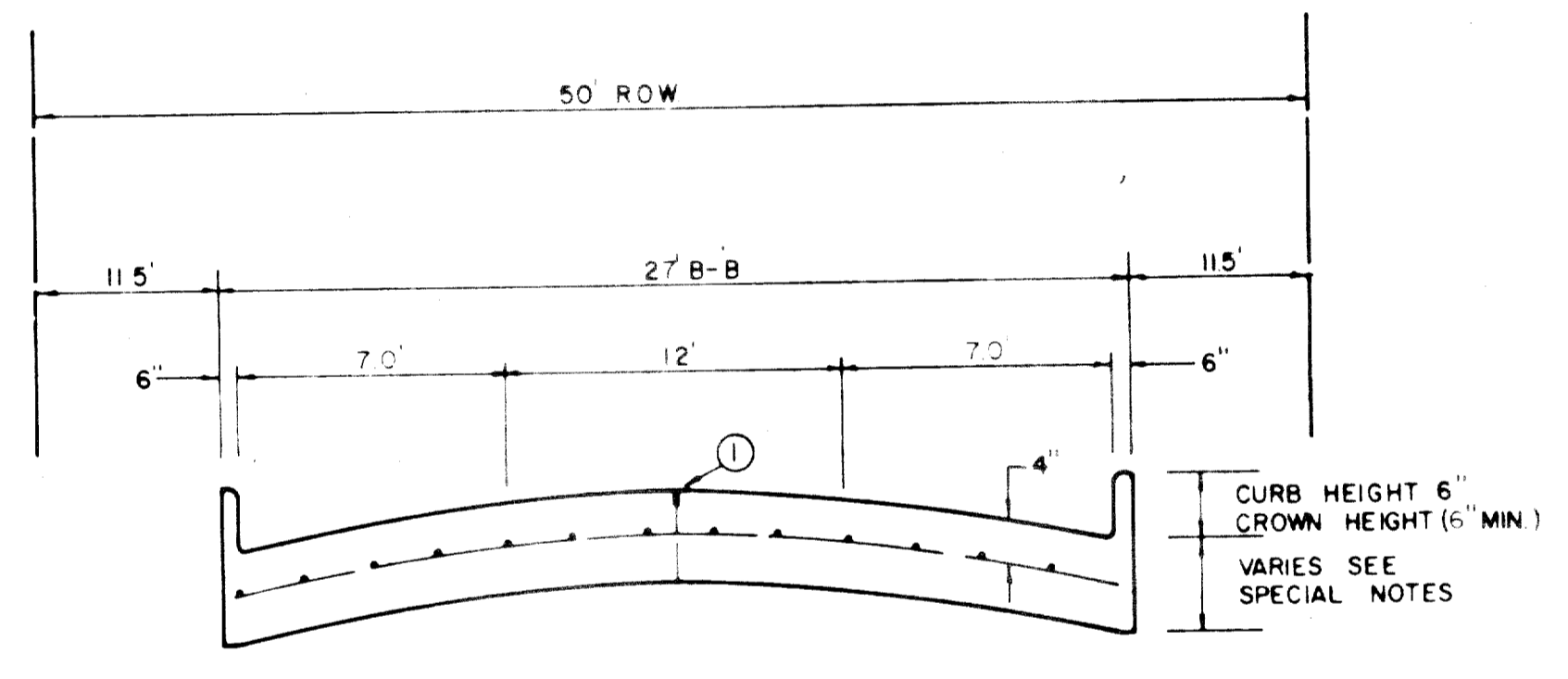
CONSTRUCTION JOINT FOR 8 INCH PAVEMENT



FOUR MOVING LANES OR TWO MOVING LANES/TWO PARKING LANES

| STREET TYPE | STREET WIDTH (W) | A | B | ROW WIDTH | P |
|-------------|------------------|-----------|------------|-----------|-------|
| COLLECTOR | 36' | 8' | 10' | 60' | 11.5' |
| COLLECTOR | 40' | 8' OR 10' | 10' OR 12' | 60' | 9.5' |
| COLLECTOR | 44' | 11' | 11' | 65' | 10.0' |

COLLECTOR STREET



ONE MOVING LANE / TWO PARKING LANES

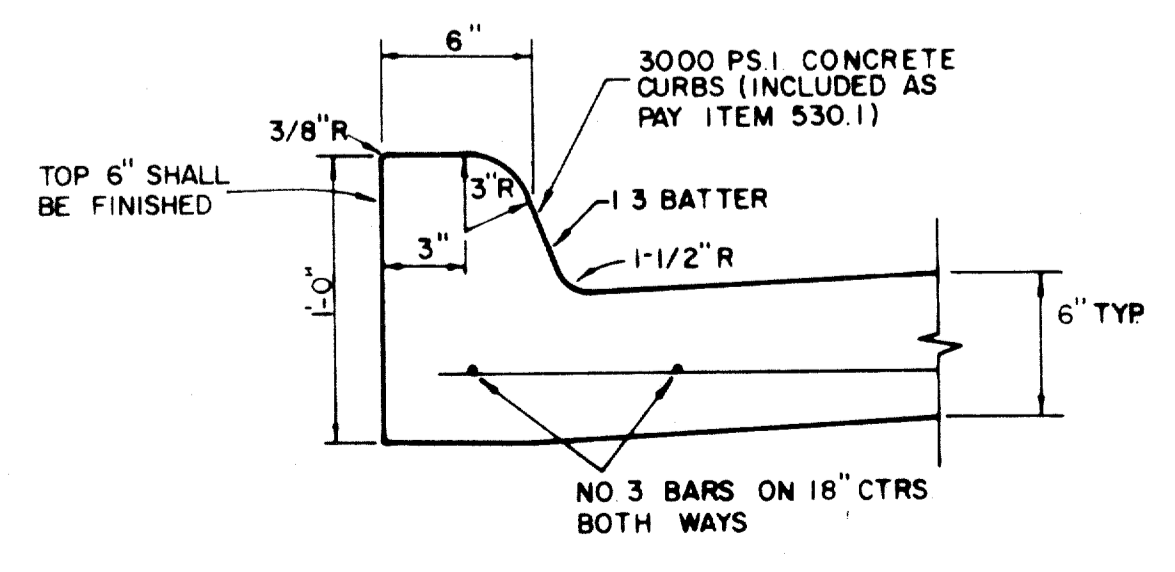
LOCAL STREET

GENERAL NOTES

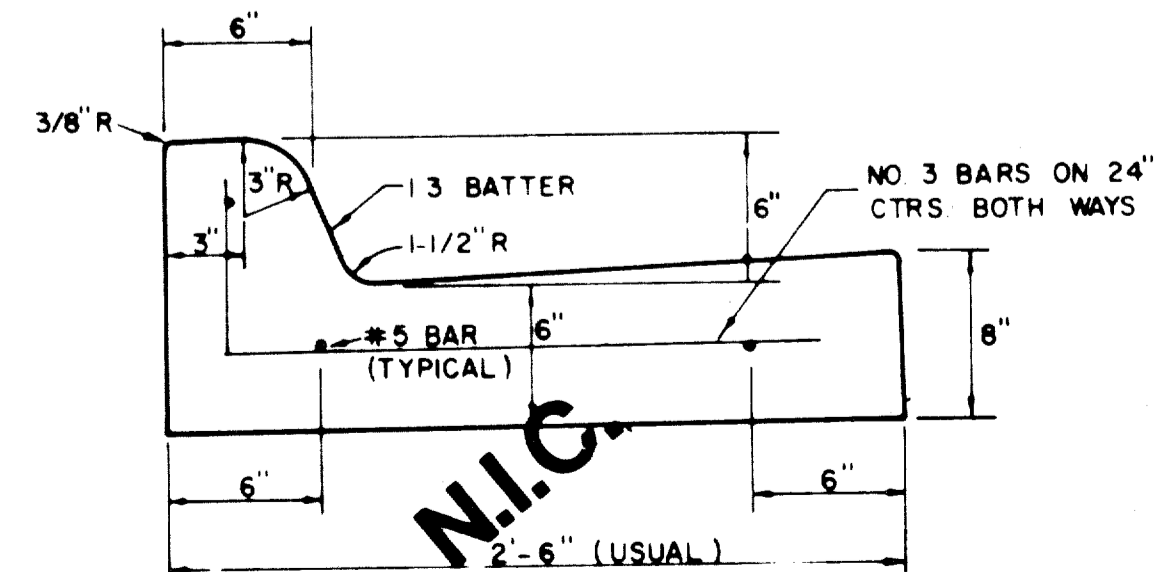
- A. GENERAL PAVEMENT THICKNESS FOR STREETS SHALL BE AS SPECIFIED BELOW IN SPECIAL NOTES.
- B. STANDARD SPECIFICATIONS REINFORCED CONCRETE PAVEMENTS
 1. ALL CURBS SHALL BE PLACED INTEGRAL WITH PAVEMENT
 2. CURBS SHALL MEET THE SAME COMPRESSIVE STRENGTH AS SPECIFIED FOR THE CONCRETE PAVEMENT.
 3. DETAIL AND ARRANGEMENT OF JOINTS, ALL TYPES, SHALL BE AS SHOWN ON THE STANDARD CONSTRUCTION DETAILS, OR AS APPROVED BY ENGINEER.
 4. BAR LAPS SHALL BE 30 DIAMETERS.
- C. BAR CHAIRS OR AN APPROVED SUPPORTING DEVICE SHALL BE FURNISHED.

REINFORCED CONCRETE PAVEMENT

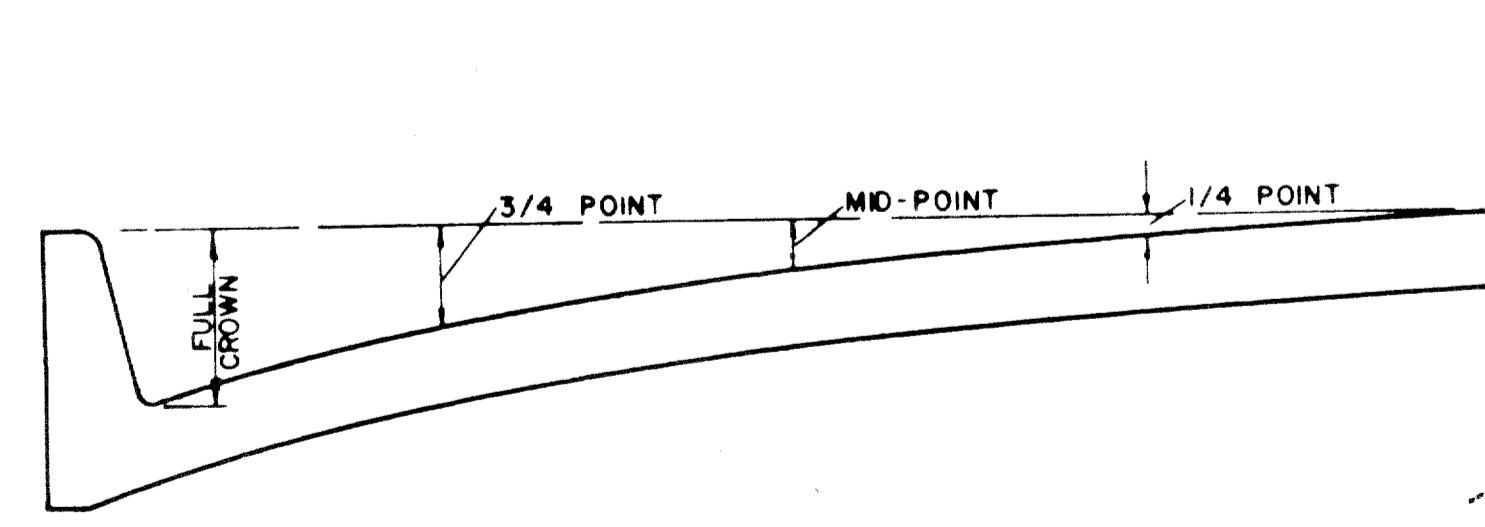
ALL REINFORCING BARS SHALL BE NO 3 TRANSVERSE BARS TO BE SPACED ON 1'-6" CENTERS, LONGITUDINAL BARS TO BE SPACED ON 1'-6" EXCEPT WHERE NOTED.
 UNDIVIDED STREETS-PROVIDE 4" DBL-REF YELLOW & BUTTON P-17-Y PATTERNS TO BE ESTABLISHED BY ENGINEER SEE DETAIL SHEET
 ① SAWED LONGITUDINAL DUMMY JOINT
 ② CONSTRUCTION JOINT (FULL WIDTH PAVT IS ALLOWED WHERE APPROVED BY ENGINEER)
 ③ FINISH SHALL BE TRANSVERSE WITH TRAFFIC LANES AND SHALL BE STEEL TINED BROOM FINISH.



STANDARD CURB

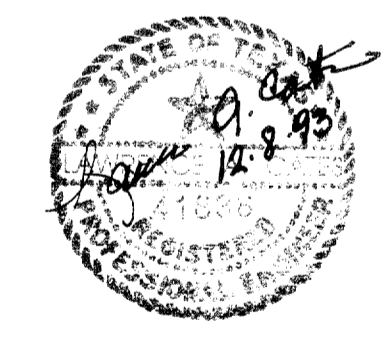


SEPARATE CURB AND GUTTER



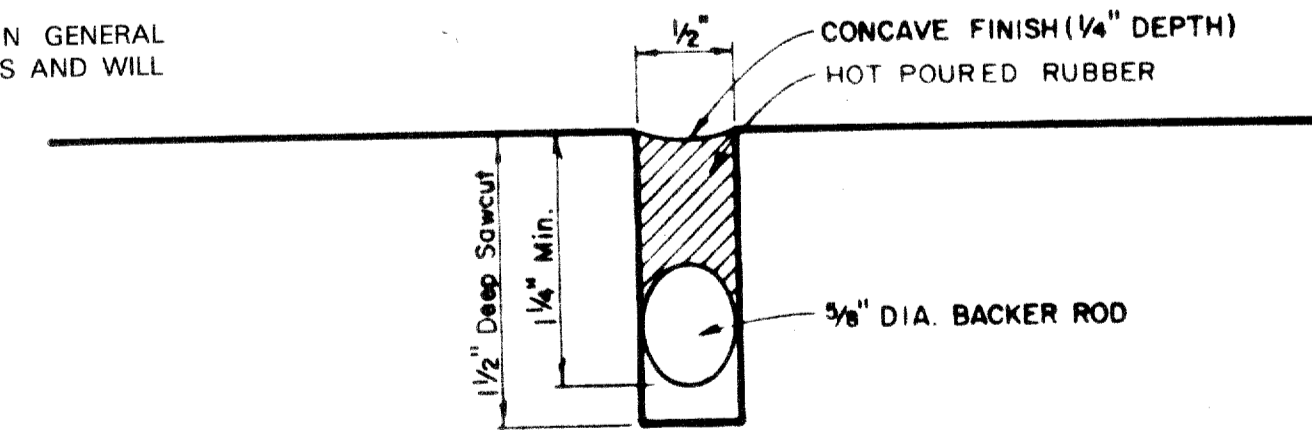
| ROADWAY WIDTH (W) | TOTAL CROWN HEIGHT | 3/4 POINT | MID-POINT | 1/4 POINT |
|-------------------|--------------------|-----------|-----------|-----------|
| 26' | 6" | 3 - 3/8" | 1 - 1/2" | 3/8" |
| 36' | 6" | 3 - 3/8" | 1 - 1/2" | 3/8" |
| 44' | 6" | 3 - 3/8" | 1 - 1/2" | 3/8" |
| 48' | 6" | 3 - 3/8" | 1 - 1/2" | 3/8" |

TABLE OF CROWN HEIGHTS AND ORDINATES FOR VARIOUS PARABOLIC SECTIONS



AS-BUILTS

I CERTIFY THIS PROJECT WAS CONSTRUCTED IN GENERAL CONFORMANCE WITH THESE CONSTRUCTION PLANS AND WILL FUNCTION AS DESIGNED.



TYPICAL JOINT DETAIL

TOWN OF ADDISON, TEXAS
 DEPARTMENT OF ENGINEERING
STANDARD CONSTRUCTION DETAILS PAVING
STREET CROWNS & JOINTS

| | | | |
|------------|-----------|---------|------------|
| Designed - | Drawn - | Date - | Job No. - |
| Approved - | Checked - | Scale - | Sheet SD-1 |

May 14, 1993