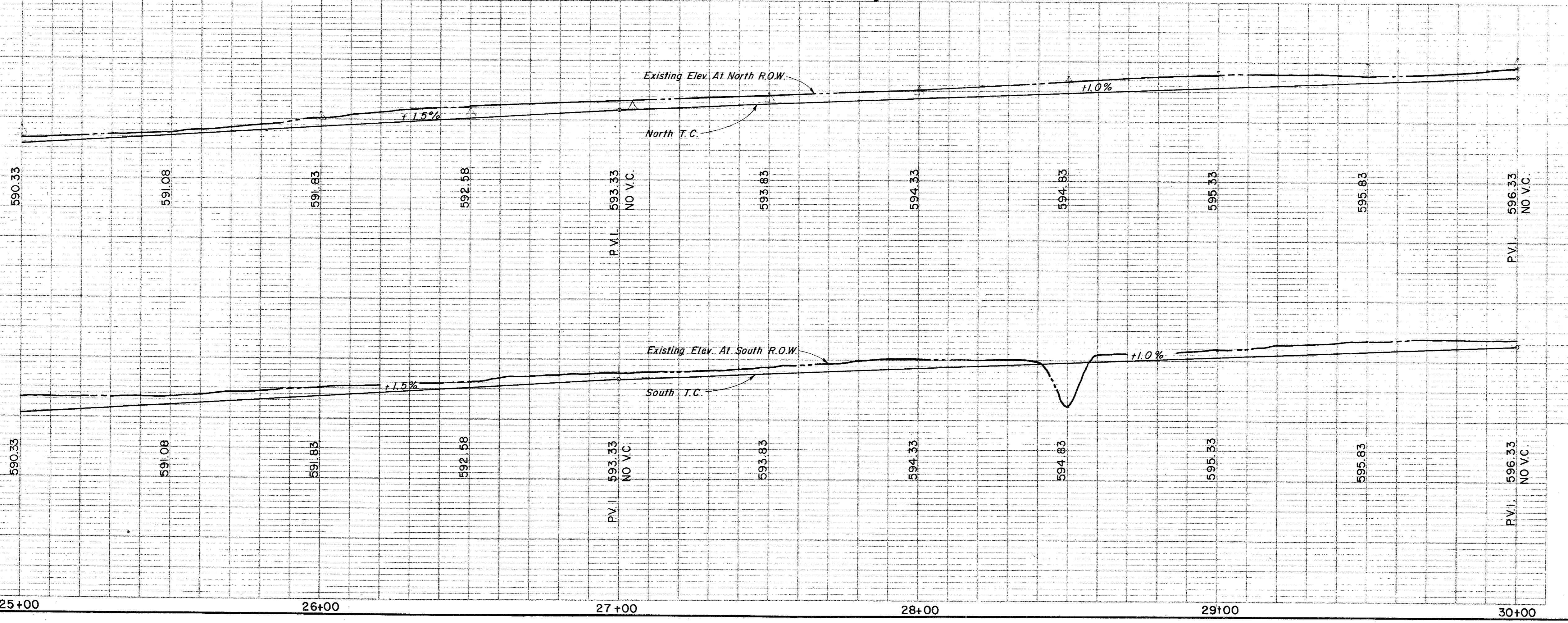
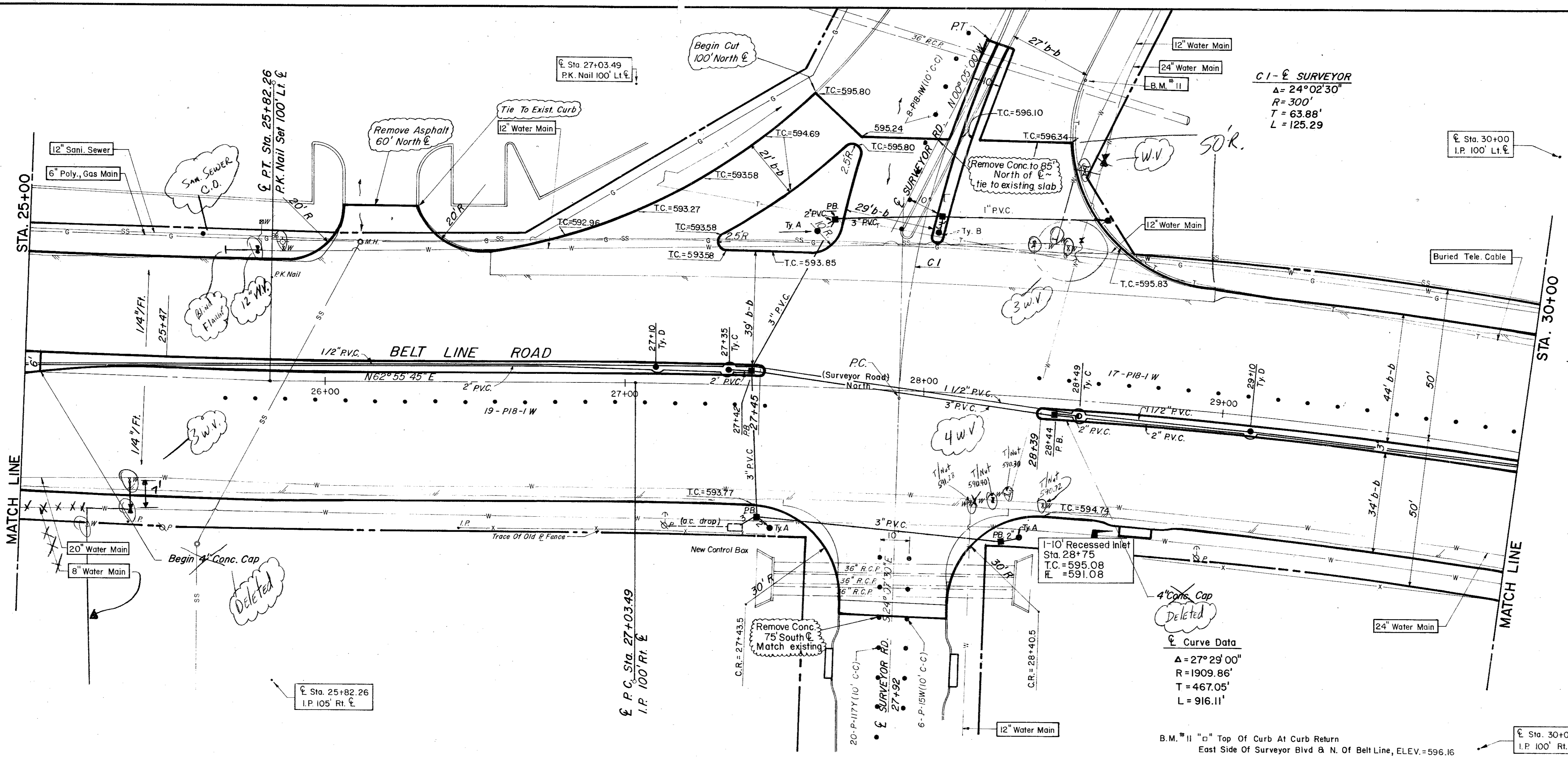


ESTIMATED QUANTITIES			
ITEM	DESCRIPTION	UNIT	QUANTITY
100	Prepare Roadway R.O.W	Sta.	5
104.1	Remove Old Concrete, Pavement & Median	SY	1109
104.2	Sawed Break-Out Groove	LF	223
110	Unclassified Road Excavation(Dens Cont.)	CY	3261
160	Placing 4" Topsoil	CY	
248	6" Flex Base (Dens Cont)(Ty A, Gr 2,C13)	CY	
260.1	Lime (Ty A) Slurry Method	Ton	46.55
260.2	6" Lime Treated Subgrade (Dens Cont)	SY	3723.67
340.1	3" Hot Mix Asph(Ty D) Resurf Shoulder	Ton	75.17
340.2	6" Hot Mix Asphalt (Ty B)	Ton	555.82
360.1	8" Conc Pavement (3000 PSI)	SY	5185.25
360.2	6" Conc Monolithic Curb(3000 PSI)	LF	1960
360.3	4" Non-Reinf Conc in Median(2000PSI)	SY	161.48
479.1	Adjust Water Valve	EA	8
479.2	Adjust Manhole	EA	1
630.5	Signal Cont. Foundation	EA	1
752.3	Traffic Buttons Dbl Refl; Ty P17 Yellow	EA	20
522	Conc Curb & Gutter Class A	LF	
524	Conc Driveways, Appr 5" Reinf Conc(3000PSI)	SY	73.27
630.1	Foundation (Ty A) Traffic Sig in Place	EA	3
630.2	Foundation (Ty B) Traffic Sig in Place	EA	1
630.3	Foundation (Ty C) Traffic Sig in Place	EA	2
630.4	Foundation (Ty D) Illumination	EA	2
640.1	1/2" PVC Conduit, Furnish & Install	LF	500
640.2	2" PVC Conduit, Furnish & Install	LF	416
640.3	3" PVC Conduit, Furnish & Install	LF	334
640.4	Pull Box, Complete in Place	EA	5
752.1	Traffic Buttons-Single Refl Ty P15 White	EA	46
752.2	Traffic Buttons-Single Refl Ty P18-White	EA	44
754.1	Traffic Buttons-Nonrefl, Ty P7 White	EA	200

LEGEND	
○	Beach Mark
●	Iron Pin
○	Manhole
○	Gas Meter
○	Gas Valve
○	Gas Line
○	Power Pole (Typical Pole Symbol)
○	Power Line
○	Guy Wire Anchor
○	Telephone Line
○	Water Meter
○	Water Valve
○	Water Line
○	Fire Hydrant
○	Manhole
○	Sanitary Sewer Line
○	Fence Line
○	Flow Direction Indicator
○	Property or Right-of-Way Line(R.O.W)
○	Easement Line
○	Traffic Pull Box
○	Mark Arm Pole Foundation (Type A or B)
○	Palisade Pole Foundation (Type C)
○	Signal Illumination Pole Foundation (Type D)
○	Top Of Curb
○	Flow Line



CITY OF ADDISON
COUNTY OF DALLAS, TEXAS
 DEPARTMENT OF PUBLIC WORKS
PAVING Sta. 25+00 to 30+00
BELT LINE ROAD
MARSH LANE TO NORTH DALLAS PKWY.
GINN, INC., CONSULTING ENGINEERS

DESIGNED-H.B.J. DRAWN-B.H. DATE-MAY-1980 FILE
 APPROVED-H.W.G. CHECKED-S.M. SCALE-H=1"=20'/V=1"=5' SHEET 11 OF