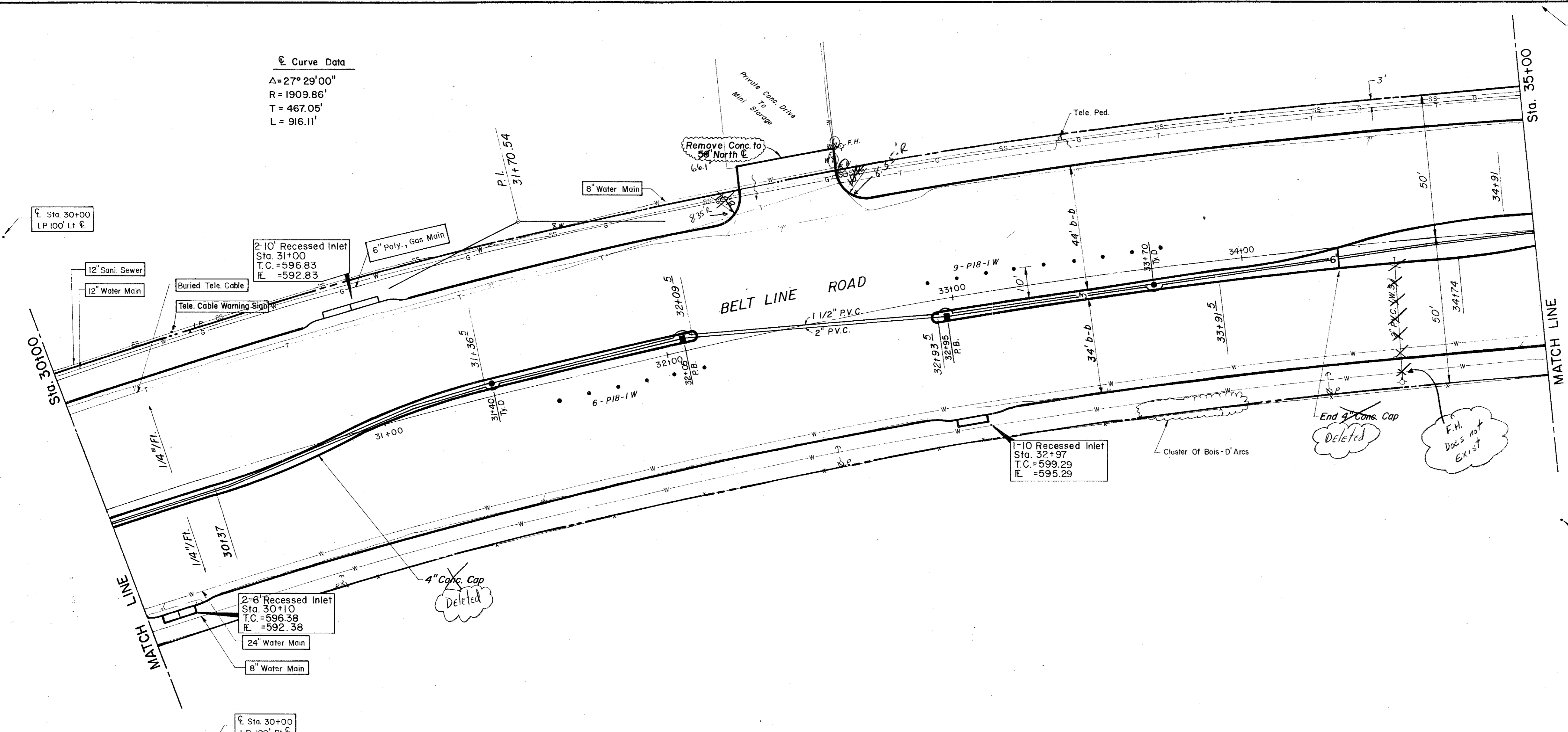


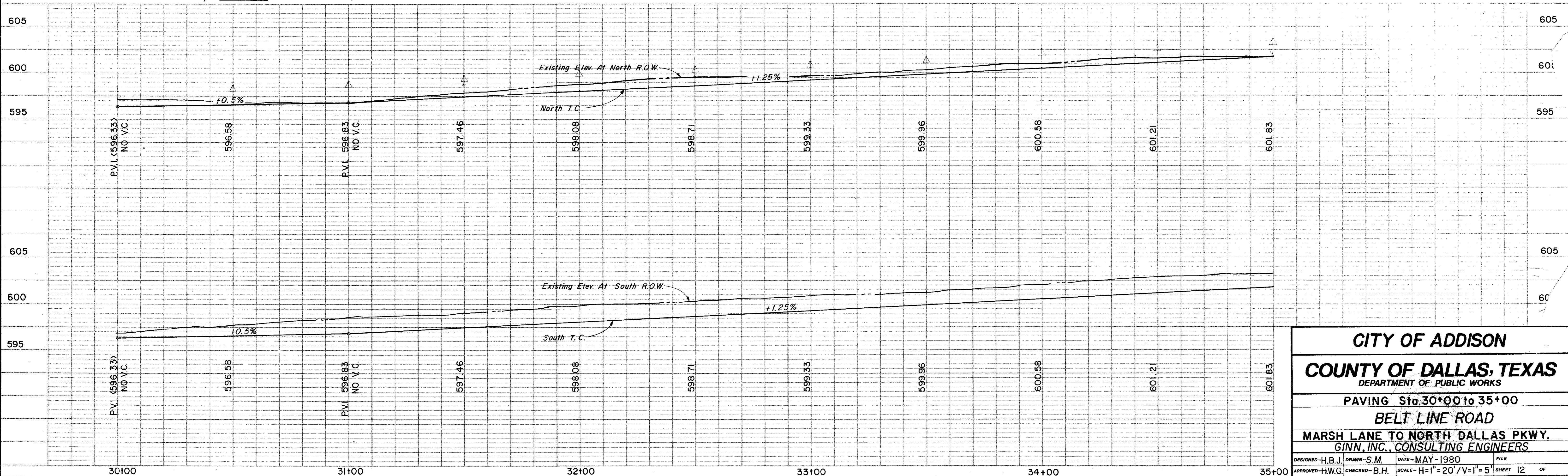
Curve Data
 $\Delta = 27^\circ 29' 00''$
 $R = 1909.86'$
 $T = 467.05'$
 $L = 916.11'$



ESTIMATED QUANTITIES			
ITEM	DESCRIPTION	UNIT	QUANTITY
100	Prepare Roadway R.O.W	Sta.	5
104.1	Remove Old Concrete, Pavement & Median	LF	34
104.2	Sawed Break-Out Groove	CY	4262
110	Unclassified Road Excavation (Dens Cont.)	CY	9.19
160	Placing 4" Topsoil	CY	—
248	6" Flex Base (Dens Cont) (Ty A, Gr 2, Cl 3)	TON	56.53
260.1	Lime (Ty A) Slurry Method	SY	4522.73
260.2	6" Lime Treated Subgrade (Dens Cont)	TON	91.68
340.1	3" Hot Mix Asph (Ty D) Resurf Shoulder	TON	—
340.2	6" Hot Mix Asphalt (Ty B)	TON	—
360.1	8" Conc Pavement (3000 PSI)	SY	4294.74
360.2	6" Conc Monolithic Curb (3000 PSI)	LF	1693
360.3	4" Non-Reinf Conc In Median (2000 PSI)	SY	120.98
479.1	Adjust Water Valve	EA	1
640.5	2" PVC SCH 40 (Conc. Encasement)	LF	45
522	Conc Curb & Gutter Class A	LF	—
524	Conc Driveways, Appr 5" Reinf Conc (3000 PSI)	SY	72.82
630.1	Foundation (Ty A) Traffic Sig In Place	EA	—
630.2	Foundation (Ty B) Traffic Sig In Place	EA	—
630.3	Foundation (Ty C) Traffic Sig In Place	EA	—
630.4	Foundation (Ty D) Illumination	EA	2
640.1	1/2" PVC Conduit, Furnish & Install	LF	500
640.2	2" PVC Conduit, Furnish & Install	LF	500
640.3	3" PVC Conduit, Furnish & Install	LF	—
640.4	Pull Box, Complete In Place	EA	2
752.1	Traffic Buttons-Single Refl Ty P15 White	EA	52
752.2	Traffic Buttons-Single Refl Ty P18-1 White	EA	15
754.1	Traffic Buttons-Nonrefl, Ty P7 White	EA	252

LEGEND

- Bench Mark
- Iron Pin
- Monument
- Gas Meter
- Gas Valve
- Power Pole (Typical Pole Symbol)
- Guy Wire Anchor
- Telephone Line
- Water Main
- Water Valve
- Water Line
- Fire Hydrant
- Manhole
- Sanitary Sewer Line
- Fence Line
- File Direction Indicator
- Property or Right-of-Way Line (R.O.W.)
- Encasement Line
- Traffic Pull Box
- Mask Arm Pole Foundation (Type A or B)
- Hexagonal Pole Foundation (Type C)
- Signal Illumination Pole Foundation (Type D)
- Top Of Curb
- Flow Line



CITY OF ADDISON
COUNTY OF DALLAS, TEXAS
 DEPARTMENT OF PUBLIC WORKS

PAVING Sta. 30+00 to 35+00
BELT LINE ROAD
 MARSH LANE TO NORTH DALLAS PKWY.
 GINN, INC., CONSULTING ENGINEERS

DESIGNED-H.B.J. DRAWN-S.M. DATE-MAY-1980 FILE
 APPROVED-H.W.G. CHECKED-B.H. SCALE-H=1"=20'/V=1"=5' SHEET 12 OF