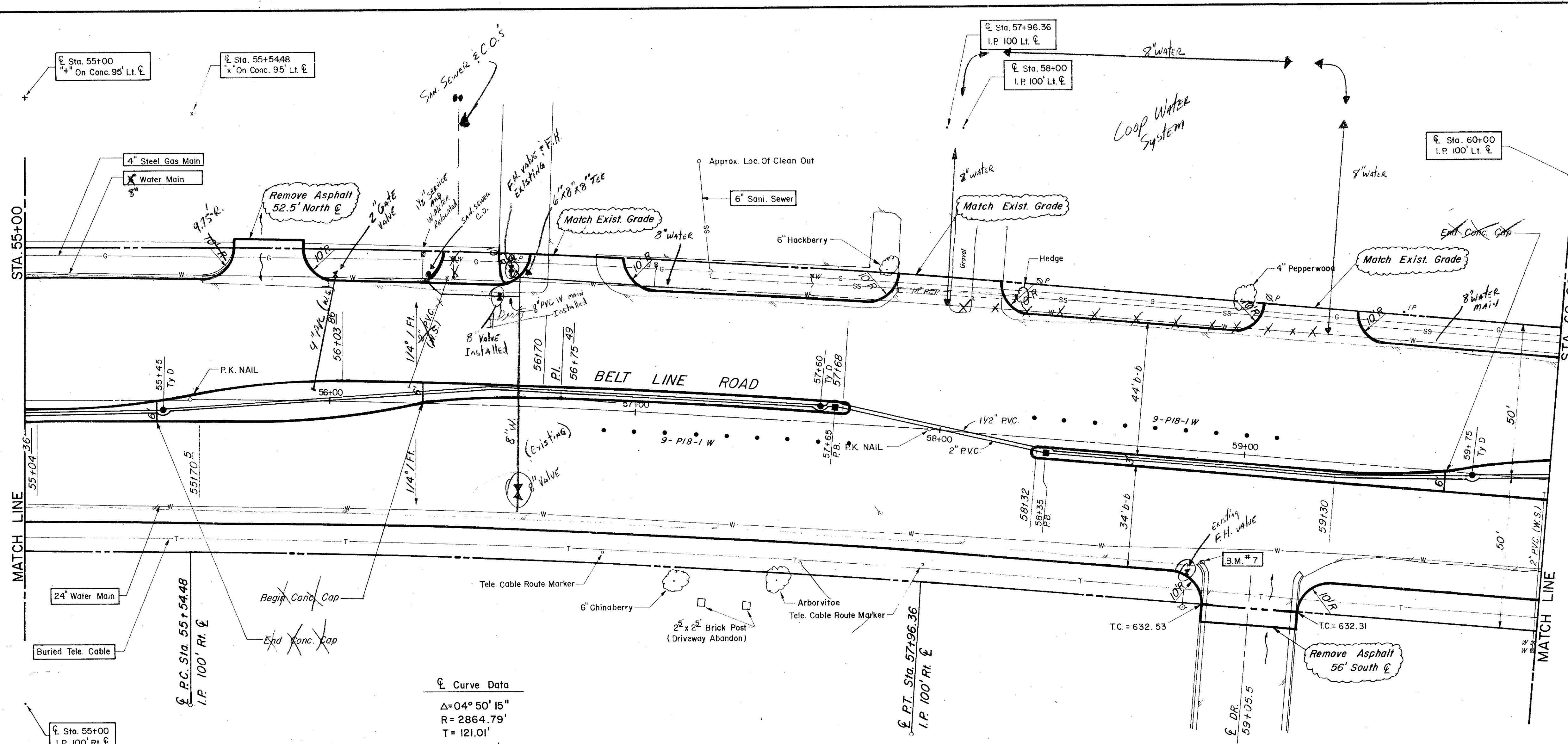


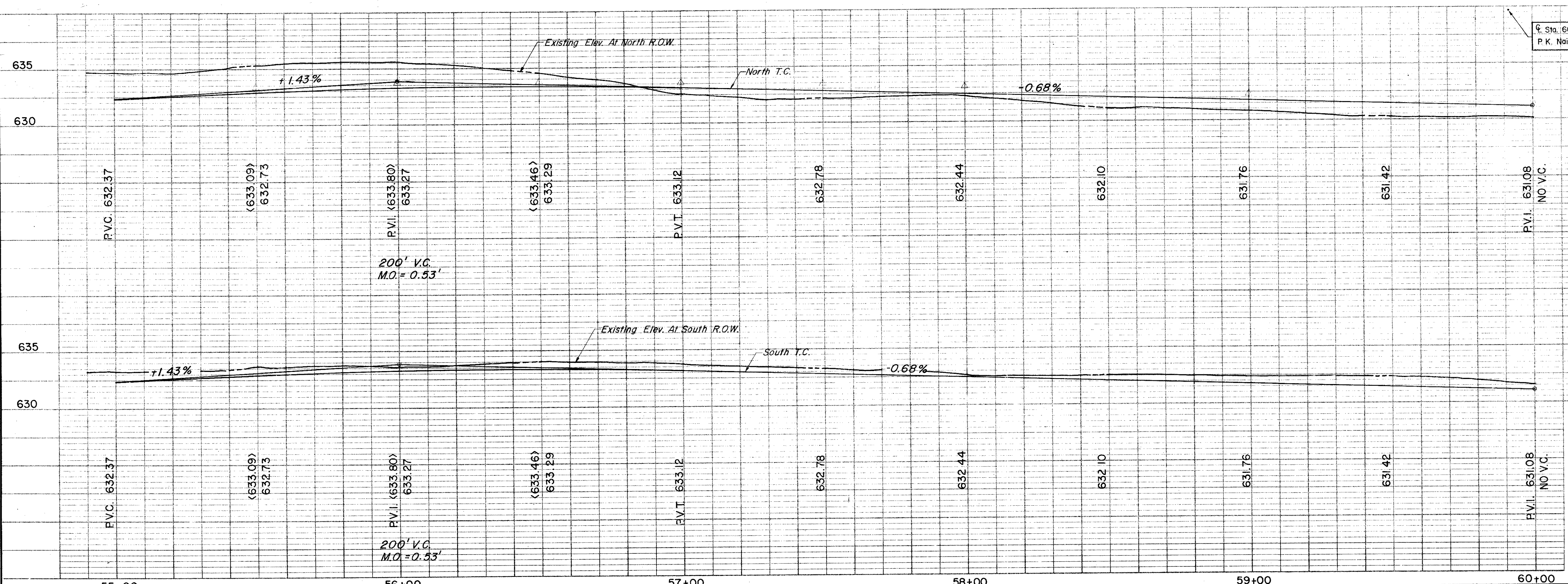
ESTIMATED QUANTITIES			
ITEM	DESCRIPTION	UNIT	QUANTITY
100	Prepare Roadway R.O.W	Sta.	5
104.1	Remove Old Concrete, Pavement & Median	SY	
104.2	Sawed Break-Out Groove	LF	151.5
110	Unclassified Road Excavation (Dens Cont.)	CY	2394
160	Placing 4" Topsoil	CY	13.59
248	6" Flex Base (Dens Cont.) (Ty A, Gr 2, C13)	CY	
260.1	Lime (Ty A) Slurry Method	Ton	56.05
260.2	6" Lime Treated Subgrade (Dens Cont)	SY	4483.61
340.1	3" Hot Mix Asphalt (Ty D) Resurf Shoulder	Ton	91.68
340.2	6" Hot Mix Asphalt (Ty B)	Ton	
360.1	8" Conc Pavement (3000 PSI)	SY	4252.51
360.2	6" Conc Monolithic Curb (3000 PSI)	LF	1609
360.3	4" Non-Reinf Conc In Median (2000 PSI)	SY	100.96
479.1	Adjust Water Valves	EA	1
640.5	2" PVC SCH 40 (Conc Encasement)	LF	90
522	Conc Curb & Gutter Class A	LF	
524	Conc Driveways, Appr 5" Reinf Conc (3000 PSI)	SY	211.86
630.1	Foundation (Ty A) Traffic Sig In Place	EA	
630.2	Foundation (Ty B) Traffic Sig In Place	EA	
630.3	Foundation (Ty C) Traffic Sig In Place	EA	
630.4	Foundation (Ty D) Illumination	EA	3
640.1	1/2" PVC Conduit, Furnish & Install	LF	500
640.2	2" PVC Conduit, Furnish & Install	LF	500
640.3	3" PVC Conduit, Furnish & Install	LF	
640.4	Pull Box, Complete In Place	EA	2
752.1	Traffic Buttons-Single Refl Ty P15 White	EA	48
752.2	Traffic Buttons-Single Refl Ty P18-1 White	EA	18
754.1	Traffic Buttons-Nonrefl, Ty P7 White	EA	240



Curve Data
 $\Delta = 04^{\circ} 50' 15''$
 $R = 2864.79'$
 $T = 121.01'$
 $L = 241.88'$

LEGEND	
○	Bench Mark
●	Iron Pin
○	Movement
○	Gas Meter
○	Gas Valve
○	Gas Line
○	Power Pole (Typical Pole Symbol)
○	Power Line
○	Telephone Line
○	Water Meter
○	Water Valve
○	Water Line
○	Fire Hydrant
○	Manhole
○	Sanitary Sewer Line
○	Fence Line
○	Flow Direction Indicator
○	Property or Right-of-Way Line (R.O.W.)
○	Easement Line
○	Traffic Sign Foundation (Type A or B)
○	Mon. Arm Pole Foundation (Type C)
○	Signal Illumination Pole Foundation (Type D)
○	Top Of Curb
○	Flow Line

B.M. # 7 "a" Top Of Curb At Curb Return, West Side Of Westmost Drive Into Victoria Station And Belt Line. ELEV = 633.05



CITY OF ADDISON
COUNTY OF DALLAS, TEXAS
 DEPARTMENT OF PUBLIC WORKS
 PAVING Sta. 55+00 to 60+00
BELT LINE ROAD
 MARSH LANE TO NORTH DALLAS PKWY.
 GINN, INC., CONSULTING ENGINEERS
 DESIGNED - H.B.J. DRAWN - B.H. DATE - MAY 1980 FILE
 APPROVED - H.W.G. CHECKED - S.M. SCALE - H=1"=20' / V=1"=5' SHEET 17 OF