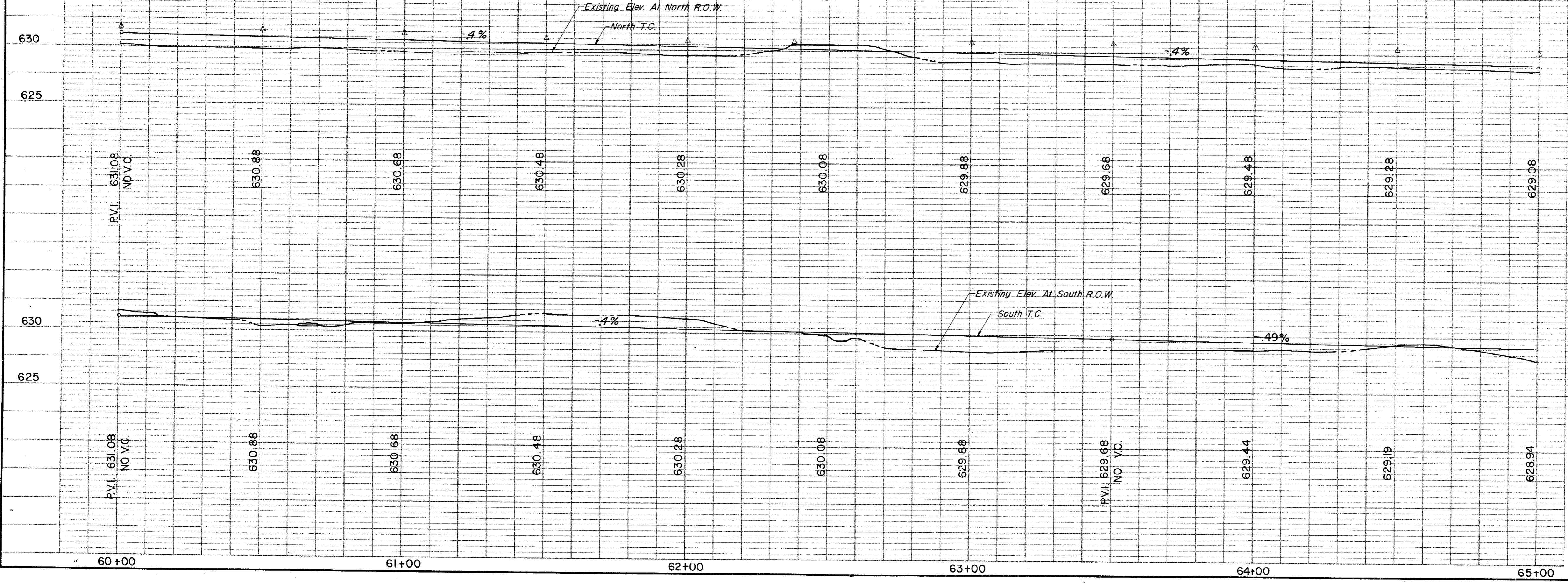
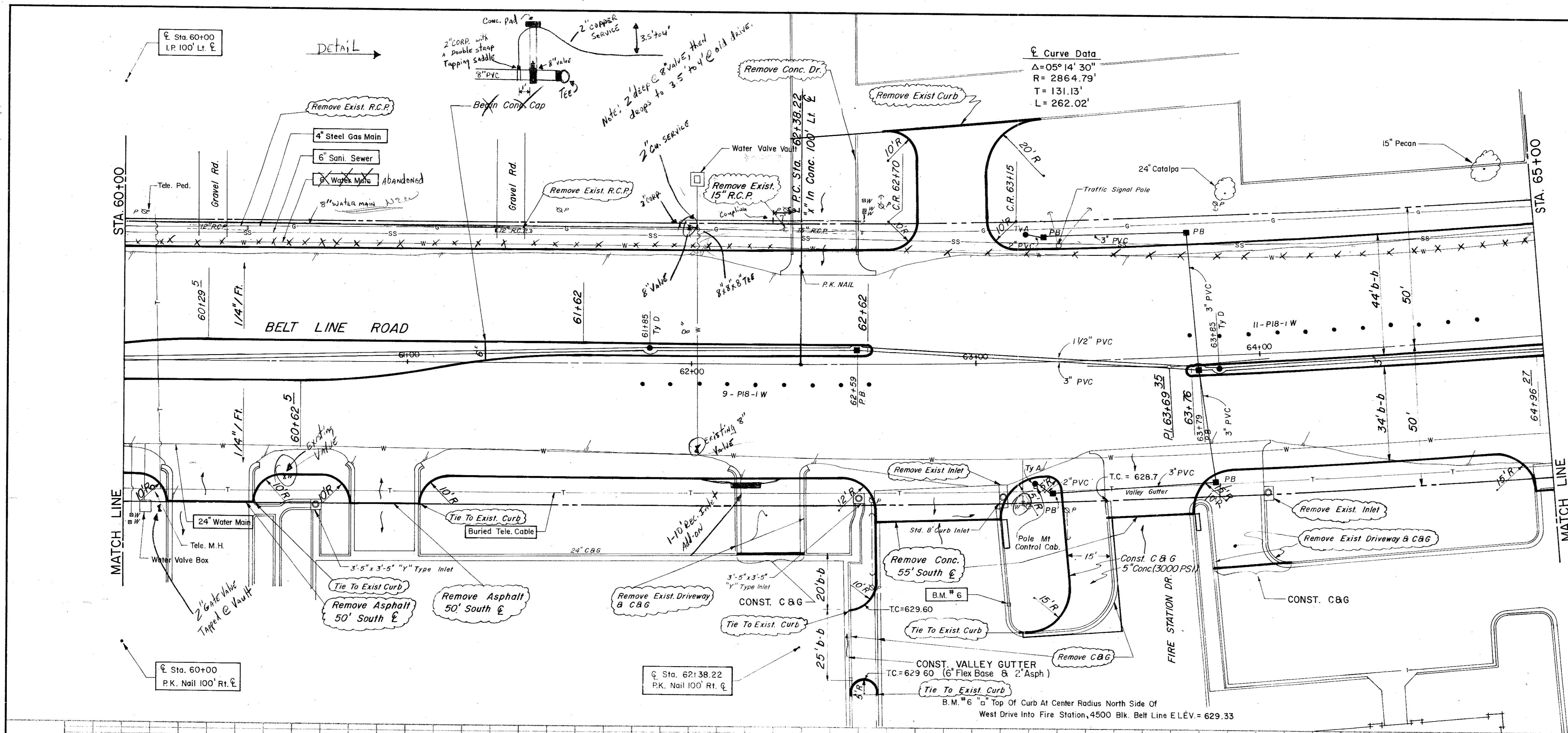


ESTIMATED QUANTITIES			
ITEM	DESCRIPTION	UNIT	QUANTITY
100.	Prepare Roadway R.O.W	Sta.	5
104.1	Remove Old Concrete, Pavement & Median	SY	146.5
104.2	Sawed Break-Out Groove	LF	269
110	Unclassified Road Excavation (Dens Cont.)	CY	2465
160	Placing 4" Topsoil	CY	1884
248	6" Flex Base (Dens Cont) (Ty A, Gr 2, Cl 3)	CY	16
260.1	Lime (Ty A) Slurry Method	Ton	43.11
260.2	6" Lime Treated Subgrade (Dens Cont)	SY	3449.06
340.1	3" Hot Mix Asp (Ty D) Resurf Shoulder	Ton	71.51
340.2	6" Hot Mix Asphalt (Ty B)	Ton	334.80
360.1	8" Conc Pavement (3000 PSI)	SY	4240.84
360.2	6" Conc Monolithic Curb (3000 PSI)	LF	1482
360.3	4" Non-Reinf Conc In Median (2000PSI)	SY	9248
340.3	2" Hot Mix Asphalt (Ty D) Transition	Ton	3.05
479.1	Adjust Water Valves	EA	1
522	Conc Curb & Gutter Class A	LF	157.96
524	Conc Driveways, Appr 5" Reinf Conc (3000PSI)	SY	445.72
630.1	Foundation (Ty A) Traffic Sig In Place	EA	2
630.2	Foundation (Ty B) Traffic Sig In Place	EA	
630.3	Foundation (Ty C) Traffic Sig In Place	EA	
630.4	Foundation (Ty D) Illumination	EA	2
640.1	1/2" PVC Conduit, Furnish & Install	LF	500
640.2	2" PVC Conduit, Furnish & Install	LF	390
640.3	3" PVC Conduit, Furnish & Install	LF	320
640.4	Pull Box, Complete In Place	EA	6
752.1	Traffic Buttons-Single Refl Ty P15 White	EA	52
752.2	Traffic Buttons-Single Refl Ty P18-1 White	EA	20
754.1	Traffic Buttons-Nonrefl, Ty P7 White	EA	252

LEGEND	
○	Survey Mark
○	Iron Pin
○	Manometer
○	Gas Meter
○	Gas Valve
○	Gas Line
○	Power Pole (Typical Pole Symbol)
○	Power Line
○	Day Wire Anchor
○	Telephone Line
○	Water Meter
○	Water Valve
○	Water Line
○	Fire Hydrant
○	Manhole
○	Sanitary Sewer Line
○	French Line
○	Flow Direction Indicator
○	Property or Right-of-Way Line (R.O.W.)
○	Center Line
○	Traffic Pull Box
○	Mask Arm Pole Foundation (Type A or B)
○	Refracted Pole Foundation (Type C)
○	Signal Illumination Pole Foundation (Type D)
○	Top Of Curb
○	Flow Line



1	Relocate Owens Driveway	10/28/1980
No.	Revision	Date

CITY OF ADDISON
COUNTY OF DALLAS, TEXAS
 DEPARTMENT OF PUBLIC WORKS
PAVING Sta. 60+00 to 65+00
BELT LINE ROAD
MARSH LANE TO NORTH DALLAS PKWY.
GINN, INC., CONSULTING ENGINEERS

DESIGNED-H.B.J.	DRAWN-B.H.	DATE-MAY-1980	FILE
APPROVED-H.W.G.	CHECKED-S.M.	SCALE-H=1"=20'/V=1"=5'	SHEET 18 OF