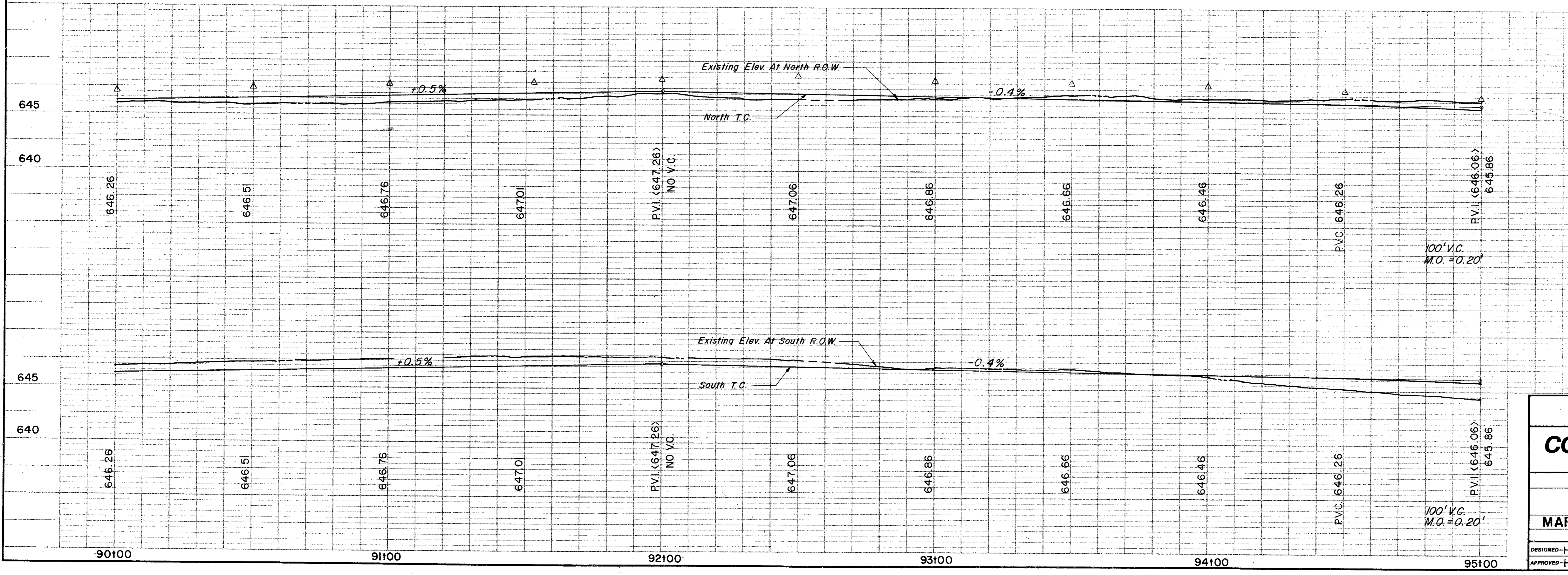
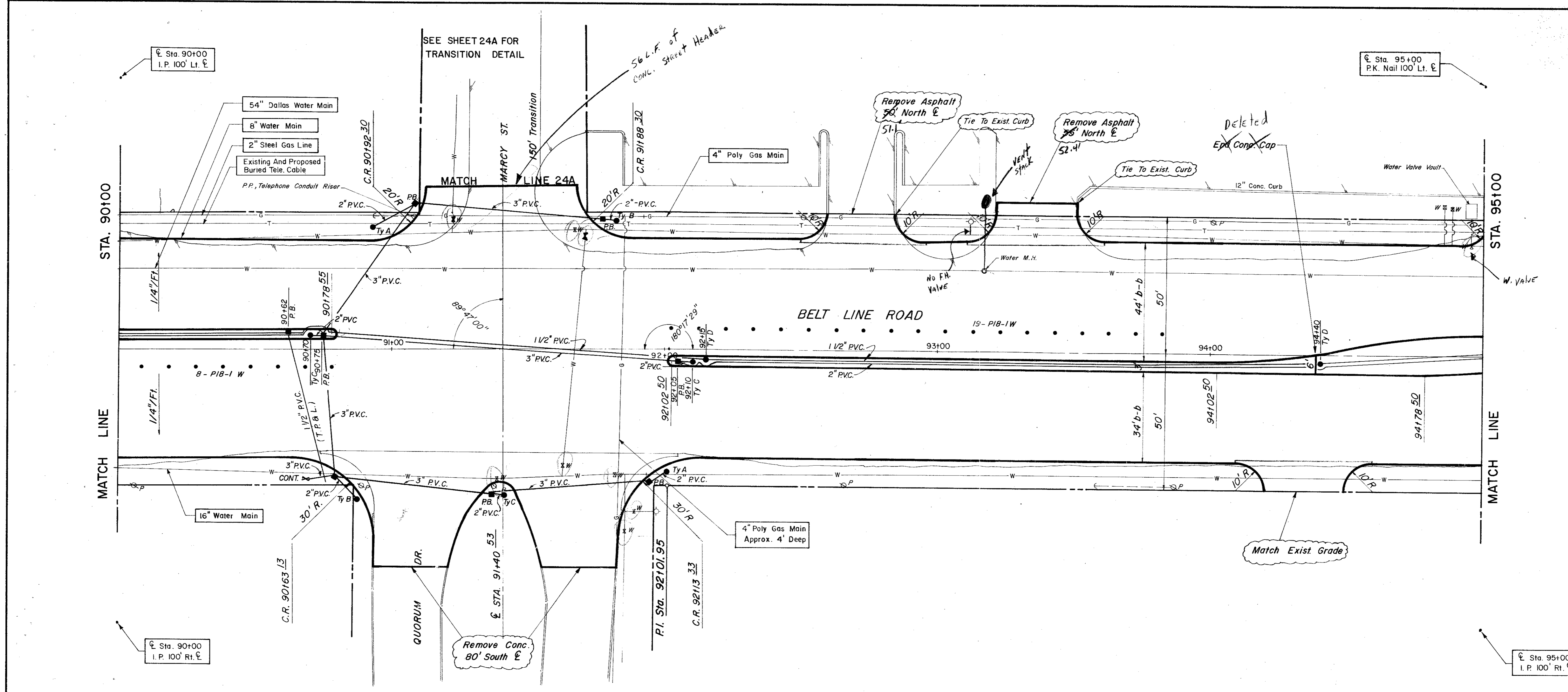


ESTIMATED QUANTITIES			
ITEM	DESCRIPTION	UNIT	QUANTITY
100	Prepare Roadway R.O.W.	Sta.	5
104.1	Remove Old Concrete, Pavement & Median	SY	367
104.2	Sawed Break-Out Groove	LF	153
110	Unclassified Road Excavation (Dens Cont.)	CY	3098
160	Placing 4" Topsoil	CY	7.44
248	6" Flex Base (Dens Cont) (Ty A, Gr 2, C13)	CY	
260.1	Lime (Ty A) Slurry Method	Ton	46.97
260.2	6" Lime Treated Subgrade (Dens Cont)	SY	3757.50
340.1	3" Hot Mix Asphalt (Ty D) Resurf Shoulder	Ton	69.67
340.2	6" Hot Mix Asphalt (Ty B)	Ton	525.26
360.1	8" Conc Pavement (3000 PSI)	SY	4829.05
360.2	6" Conc Monolithic Curb (3000 PSI)	LF	1559
360.3	4" Non-Reinf Conc in Median (2000 PSI)	SY	110
360.4	Conc. St Header	LF	56
479.1	Adjust Water Valves	EA	8
479.2	Adjust Manhole	EA	1
630.5	Signal Cont. Foundation	EA	1
522	Conc Curb & Gutter Class A	LF	
524	Conc Driveways, Appr 5" Reinf Conc (3000 PSI)	SY	119.61
630.1	Foundation (Ty A) Traffic Sig in Place	EA	2
630.2	Foundation (Ty B) Traffic Sig in Place	EA	2
630.3	Foundation (Ty C) Traffic Sig in Place	EA	2
630.4	Foundation (Ty D) Illumination	EA	2
640.1	1/2" PVC Conduit, Furnish & Install	LF	560
640.2	2" PVC Conduit, Furnish & Install	LF	1115
640.3	3" PVC Conduit, Furnish & Install	LF	435
640.4	Pull Box, Complete in Place	EA	8
752.1	Traffic Buttons - Single Refl Ty P15 White	EA	40
752.2	Traffic Buttons - Single Refl Ty P18-I White	EA	27
754.1	Traffic Buttons - Nonrefl, Ty P7 White	EA	200

LEGEND	
□	Block Work
○	Iron Pole
○	Monument
○	Box Manhole
○	Gas Valve
○	Gas Line
○	Power Pole (Typical Pole Symbol)
○	Power Line
○	Guy Wire Anchor
○	Telephone Line
○	Water Meter
○	Water Valve
○	Water Line
○	Fire Hydrant
○	Manhole
○	Sanitary Sewer Line
○	Parade Line
○	Flow Direction Indicator
○	Property or Right-of-Way Line (DOW)
○	Excavation Line
○	Traffic Pull Box
○	Mini Arm Pole Foundation (Type A or B)
○	Standard Pole Foundation (Type C)
○	Signal Illumination Pole Foundation (Type D)
○	Top of Curb
○	Flow Line



CITY OF ADDISON
COUNTY OF DALLAS, TEXAS
 DEPARTMENT OF PUBLIC WORKS
 PAVING Sta. 90+00 to 95+00
BELT LINE ROAD
 MARSH LANE TO NORTH DALLAS PKWY.
 GINN, INC., CONSULTING ENGINEERS

DESIGNED - H.B.J. DRAWN - S.M. DATE - MAY - 1980 FILE
 APPROVED - H.W.G. CHECKED - B.H. SCALE - H=1"=20'/V=1"=5' SHEET 24 OF