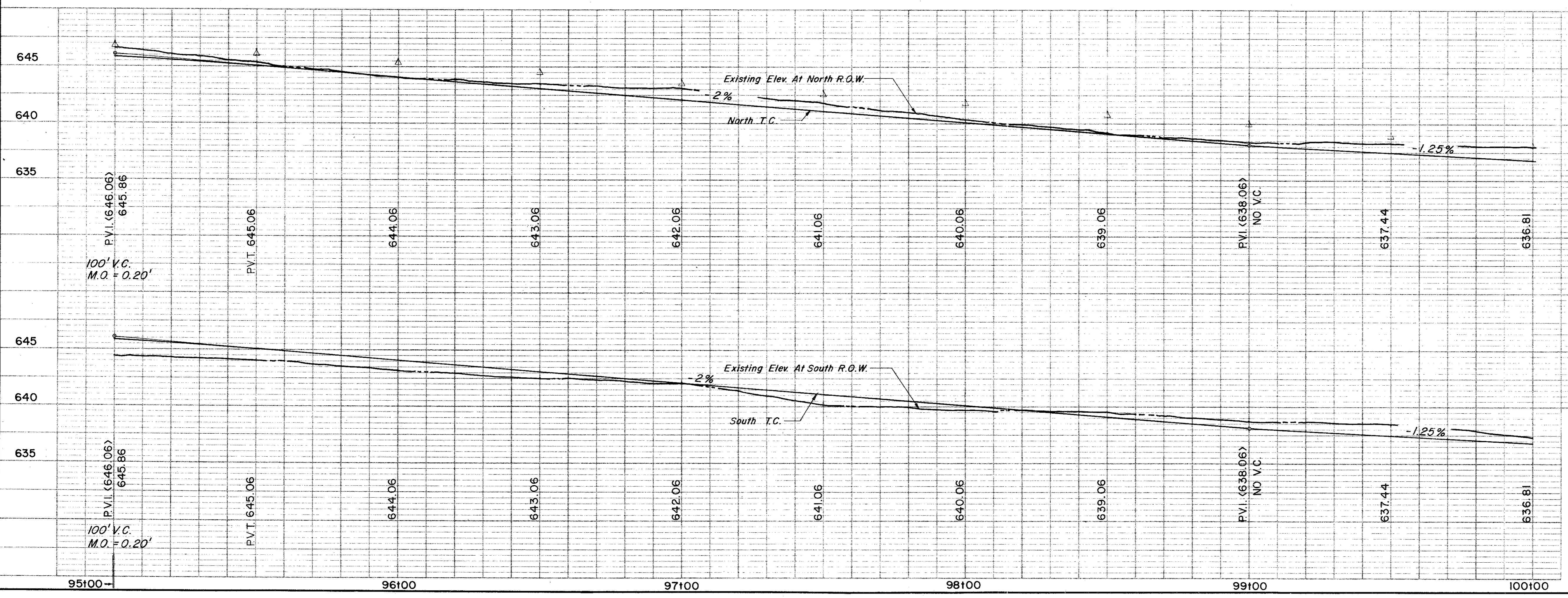
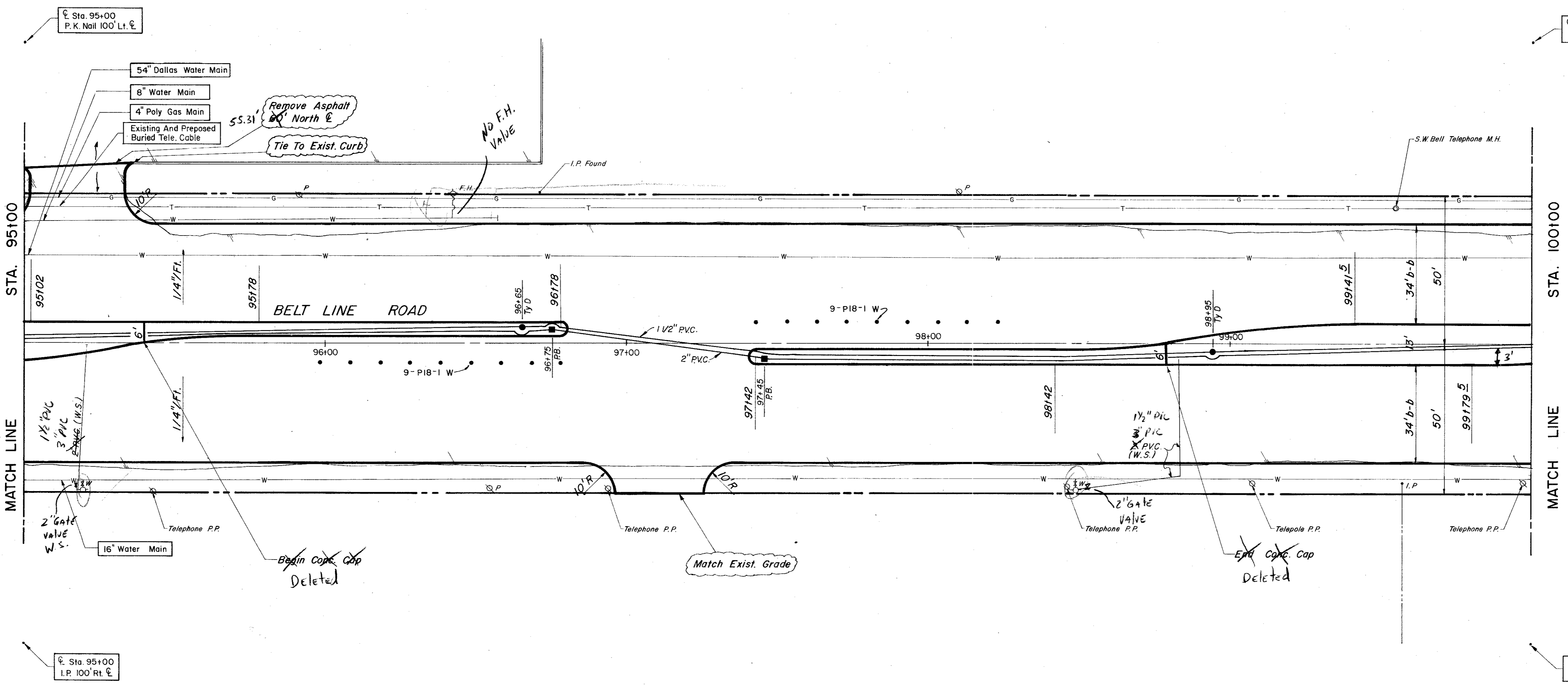


| ESTIMATED QUANTITIES |   |      |          |
|----------------------|---|------|----------|
| ITEM                 | DESCRIPTION                                   | UNIT | QUANTITY |
| 100                  | Prepare Roadway R.O.W                         | Sta. | 5        |
| 104.1                | Remove Old Concrete, Pavement & Median        | SY   |          |
| 104.2                | Sawed Break-Out Groove                        | LF   | 65       |
| 110                  | Unclassified Road Excavation (Dens Cont.)     | CY   | 3519     |
| 160                  | Placing 4" Topsoil                            | CY   | 21.57    |
| 248                  | 6" Flex Base (Dens Cont.) (Ty A, Gr 2, C13)   | CY   |          |
| 260.1                | Lime (Ty A) Slurry Method                     | Ton  |          |
| 260.2                | 6" Lime Treated Subgrade (Dens Cont.)         | SY   |          |
| 340.1                | 3" Hot Mix Asphalt (Ty D) Resurf Shoulder     | Ton  |          |
| 340.2                | 6" Hot Mix Asphalt (Ty B)                     | Ton  |          |
| 360.1                | 8" Conc Pavement (3000 PSI)                   | SY   | 4197.23  |
| 360.2                | 6" Conc Monolithic Curb (3000 PSI)            | LF   | 1785     |
| 360.3                | 4" Non-Reinf Conc in Median (2000 PSI)        | SY   | 100.97   |
| 640.5                | 2" PVC SCH 40 (Conc Encasement)               | LF   | 120      |
| 479.1                | Adjust Water Valve                            | EA   | 2        |
| 522                  | Conc Curb & Gutter Class A                    | LF   |          |
| 524                  | Conc Driveways, Appr 5" Reinf Conc (3000 PSI) | SY   | 117.02   |
| 630.1                | Foundation (Ty A) Traffic Sig In Place        | EA   |          |
| 630.2                | Foundation (Ty B) Traffic Sig In Place        | EA   |          |
| 630.3                | Foundation (Ty C) Traffic Sig In Place        | EA   |          |
| 630.4                | Foundation (Ty D) Illumination                | EA   | 2        |
| 640.1                | 1 1/2" PVC Conduit, Furnish & Install         | LF   | 500      |
| 640.2                | 2" PVC Conduit, Furnish & Install             | LF   | 500      |
| 640.3                | 3" PVC Conduit, Furnish & Install             | LF   |          |
| 640.4                | Pull Box, Complete In Place                   | EA   | 2        |
| 752.1                | Traffic Buttons - Single Refl Ty P15 White    | EA   | 48       |
| 752.2                | Traffic Buttons - Single Refl Ty P18-1 White  | EA   | 18       |
| 754.1                | Traffic Buttons - Nonrefl, Ty P7 White        | EA   | 240      |

LEGEND

- Bench Mark
- Iron Pin
- Monument
- Gas Meter
- Gas Valve
- Gas Line
- Power Pole (Typical Pole Symbol)
- Power Line
- City Wire Indicator
- Telephone Line
- Water Meter
- Water Valve
- Water Line
- Fire Hydrant
- Manhole
- Sanitary Sewer Line
- Fence Line
- Flow Direction Indicator
- Property or Right-of-Way Line (ROW)
- Easement Line
- Traffic Pull Box
- Mark Arm Pole Foundation (Type A or B)
- Pedestal Pole Foundation (Type C)
- Signal Illumination Pole Foundation (Type D)
- Top of Curb
- Flow Line



**CITY OF ADDISON**  
**COUNTY OF DALLAS, TEXAS**  
 DEPARTMENT OF PUBLIC WORKS  
 PAVING Sta. 95+00 to 100+00  
**BELT LINE ROAD**  
 MARSH LANE TO NORTH DALLAS PKWY.  
 GINN, INC., CONSULTING ENGINEERS

DESIGNED - H.B.J. DRAWN - S.M. DATE - MAY - 1980 FILE  
 APPROVED - H.W.G. CHECKED - B.H. SCALE - H=1"=20' / V=1"=5' SHEET 25 OF