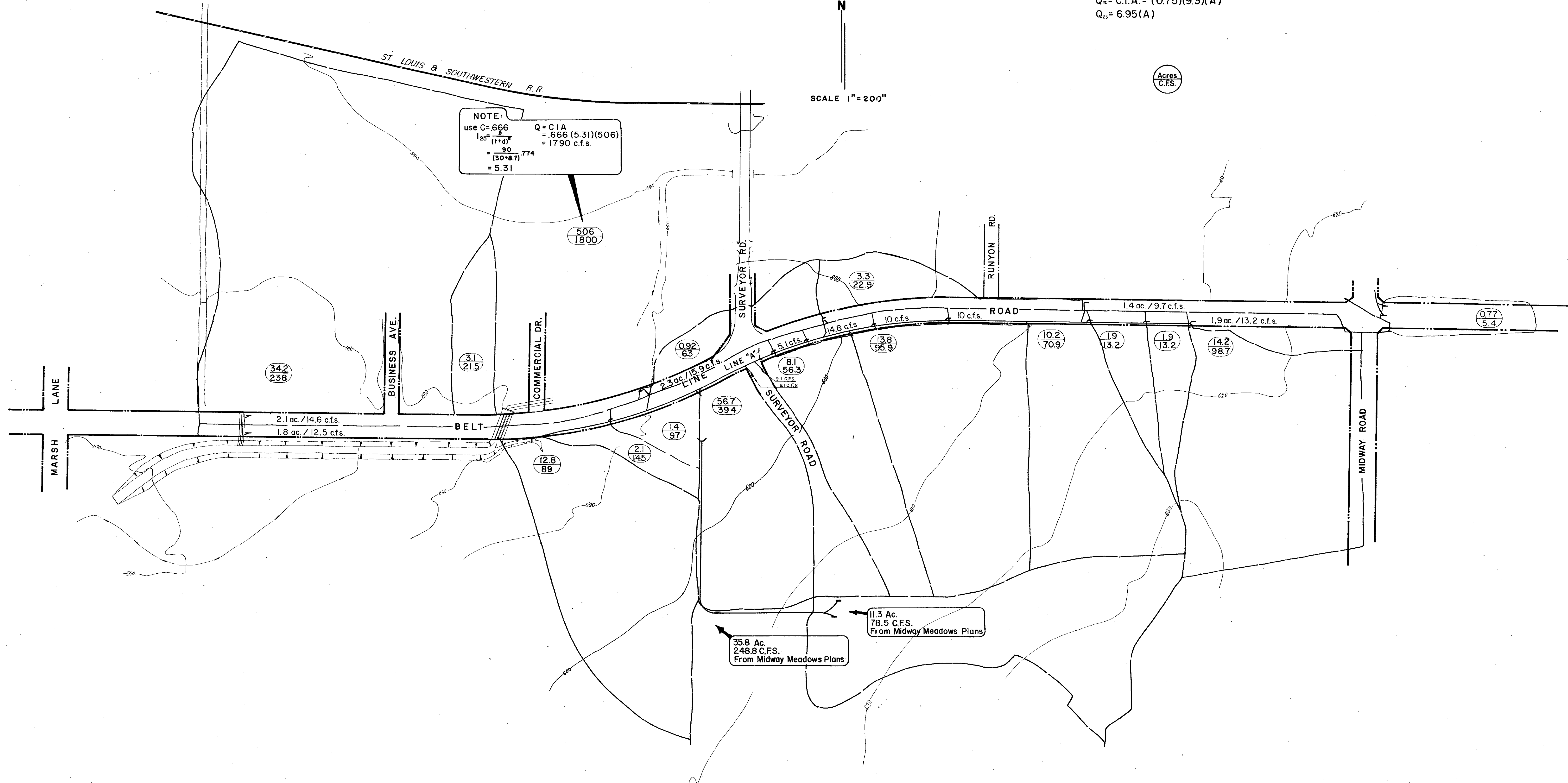


Drainage Calculations (T.H.D. Hydraulic Manual)
 Rolling Terrain 1% - 3.5%
 Impervious Soil
 Commercial C = 0.6 - 0.9 (use C=0.75)
 For Dallas County
 $I_{24} = \frac{b}{(1+d)^e} = \frac{90}{(10+8.7)^{0.774}} = 9.3 \text{ in/hr.}$
 $Q_{24} = C.I.A. = (0.75)(9.3)(A)$
 $Q_{24} = 6.95(A)$

SCALE 1" = 200'

NOTE:
 use C = 666 $Q = C.I.A$
 $\frac{1.25}{(1+d)^e} = 666 (5.31)(506)$
 $= 1790 \text{ c.f.s.}$
 $\frac{90}{(30+8.7)^{0.774}} = 5.31$



CITY OF ADDISON		
COUNTY OF DALLAS, TEXAS		
DEPARTMENT OF PUBLIC WORKS		
DRAINAGE AREA MAP		
BELT LINE ROAD		
MIDWAY ROAD TO NORTH DALLAS PKWY		
GINN, INC., CONSULTING ENGINEERS		
DESIGNED-H.B.J.	DRAWN-B.H.	DATE-MAY-1980
APPROVED-H.W.G.	CHECKED-S.M.	SCALE-1"=200'
FILE		SHEET 29 OF