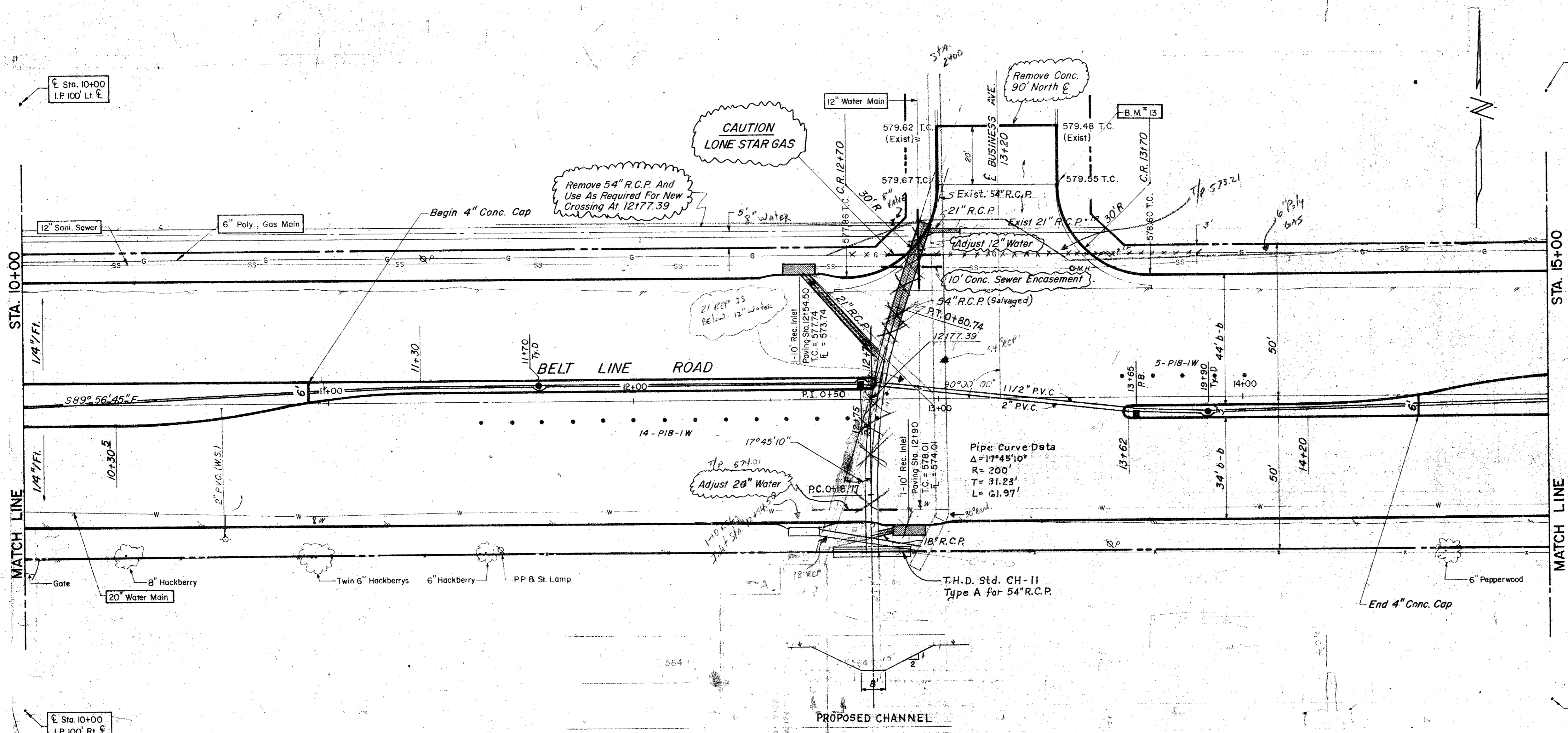


ESTIMATED QUANTITIES			
ITEM	DESCRIPTION	UNIT	QUANTITY
432	Con. Rip-Rap	SY	272.5
479.7	Sewer Encasement / C.I. Pipe	LF	10.0
440.9	Reinf. Steel (For Rip-Rap)	LBS	1109.9
465.1	18" R.C.P. CI III	LF	24.0
465.2	21" R.C.P. CI III	LF	50.0
470.2	10" Rec. Inlet - Comp. In Pl.	EA	2.0
479.6	Adjust 12" Water	LF	30.0
479.3	Adjust 20" Water	LF	10.0
469.3	Remove 54" R.C.P.	LF	297.0
464.14	Relay 54" R.C.P.	LF	135.0

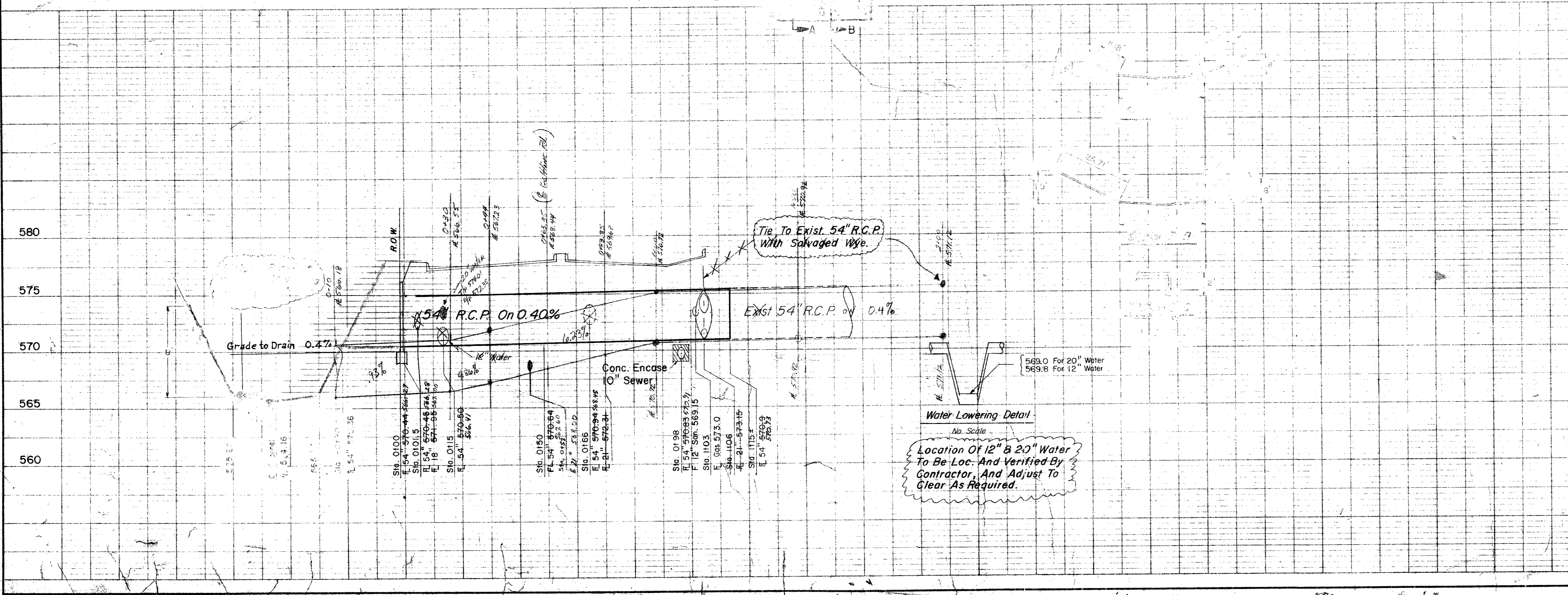


LEGEND

- Bench Mark
- Iron Pin
- Monument
- 8" Gas Meter
- 6" Gas Valve
- Gas Line
- Power Pole (Typical Pole Symbol)
- Power Line
- Guy Wire Anchor
- Telephone Line
- Water Meter
- Water Valve
- Water Line
- Fire Hydrant
- Manhole
- Sanitary Sewer Line
- Fence Line
- Elevation Indication
- Property or Right-of-Way Line (ROW)
- Easement Line
- Traffic Pole Base
- Mark Area Pole Foundation (Type A or B)
- Pedestal Pole Foundation (Type C)
- Signal, Identification Pole Foundation (Type D)
- Top Of Curb
- Flow Line

Sta. 15+00
I.P. 100' Rt. E

B.M. 13 "a" Top of Curb At Curb Return East Side Of Business Ave. & North Of Belt Line, ELEV. = 579.86



NO.	REVISION	DATE
1	Added Sh.	6-13-80

CITY OF ADDISON

COUNTY OF DALLAS, TEXAS
DEPARTMENT OF PUBLIC WORKS

DRAINAGE STA. 10+00 - 15+00
BELT LINE ROAD

MARSH LN. TO NORTH DALLAS PKWY.
GINN, INC., CONSULTING ENGINEERS

DESIGNED - A.C.F. DRAWN - S.M. DATE - JUNE - 1980 FILE
APPROVED - H.W.G. CHECKED - B.H. SCALE - H=1"=20' V=1"=5' SHEET 32 A OF