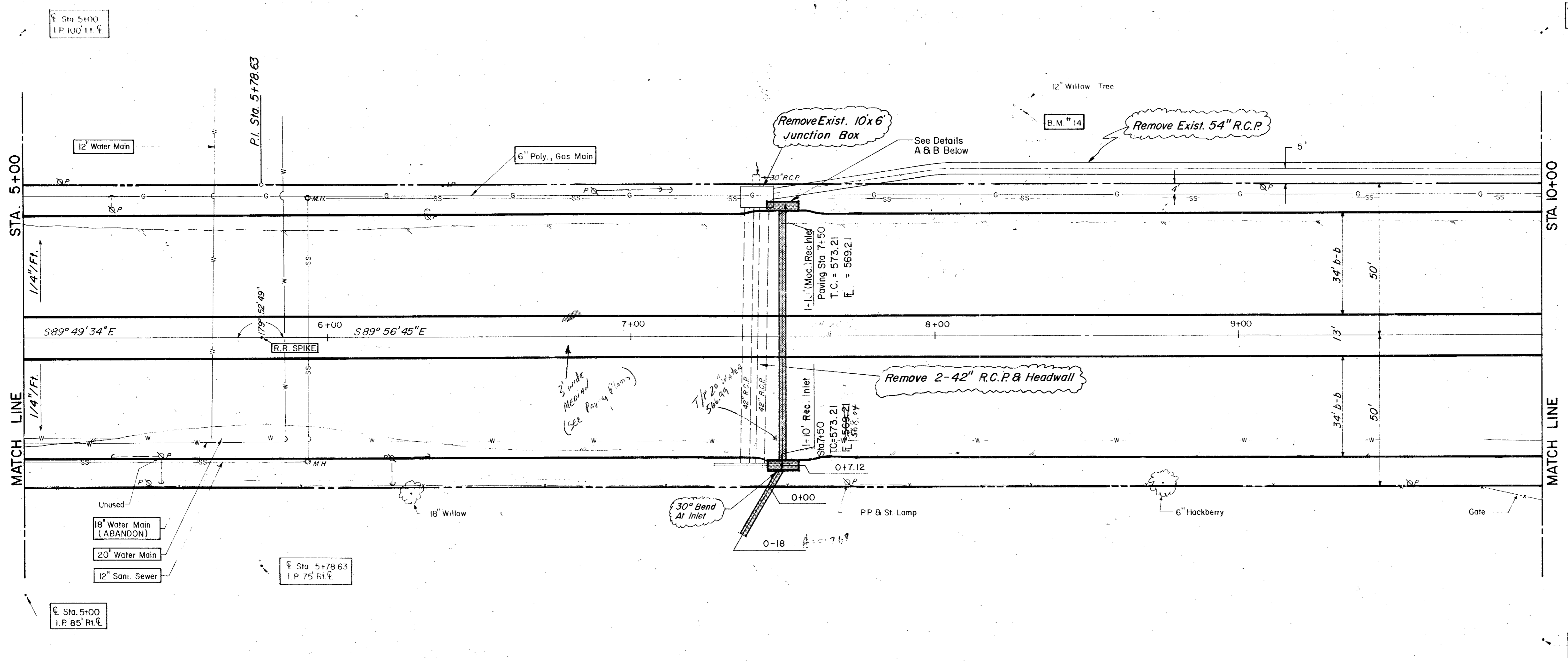
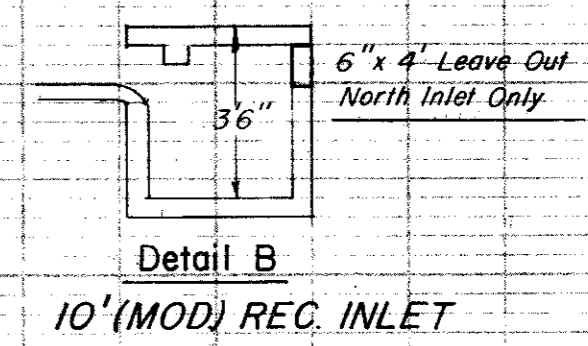
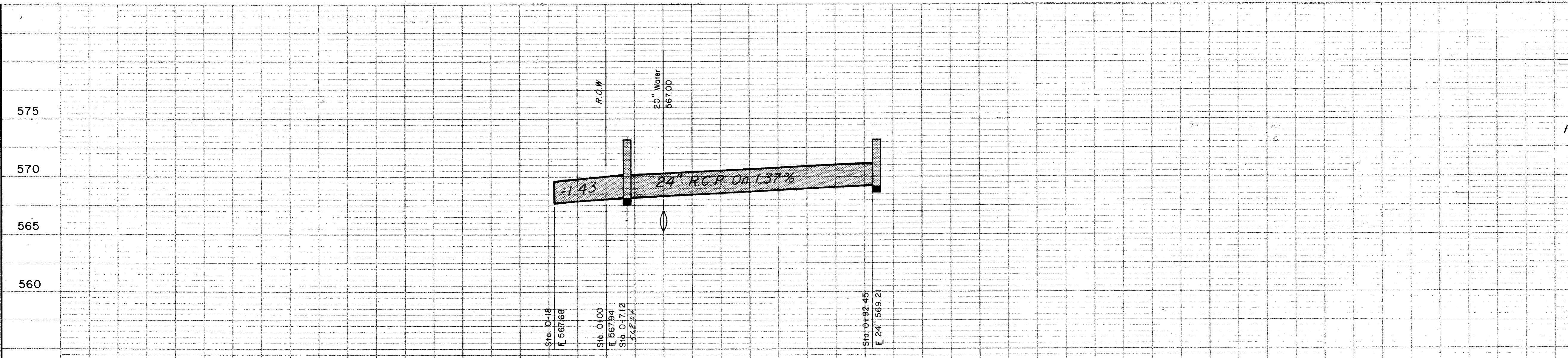


| ESTIMATED QUANTITIES | | | |
|----------------------|-----------------------------|------|----------|
| ITEM | DESCRIPTION | UNIT | QUANTITY |
| 421.1 | Conc. Headwall (CI-A) | CY | 2.4 |
| 440.1 | Reinforcing Steel | LB | 245.0 |
| 465.4 | 30" R.C.P. CI III | LF | 241.0 |
| 465.3 | 24" R.C.P. CI III | LF | 174.0 |
| 470.2 | 10" Rec. Inlet Comp. In Pl. | EA | 1.0 |
| 470.3 | Adjust 20" water main | LF | 30.0 |
| 496.2 | Remove Existing 2-42" RCP | LF | 1.0 |
| 496.3 | Remove 54" R.C.P. | LF | 255.0 |



| LEGEND | |
|--------|---|
| □ | Block Wall |
| ○ | Iron Pole |
| ○ | Manhole |
| ○ | One Meter |
| ○ | Gas Valve |
| ○ | Gas Line |
| ○ | Power Pole (Typical Pole Symbol) |
| ○ | Power Line |
| ○ | Guy Wire Anchor |
| ○ | Telephone Line |
| ○ | Water Meter |
| ○ | Water Valve |
| ○ | Water Line |
| ○ | Fire Hydrant |
| ○ | Manhole |
| ○ | Sanitary Sewer Line |
| ○ | Fence Line |
| ○ | Flow Direction Indicator |
| ○ | Property or Right-of-Way Line (ROW) |
| ○ | Easement Line |
| ○ | Traffic Pole Base |
| ○ | Manhole Pole Foundation (Type A or B) |
| ○ | Pole Foundation (Type C) |
| ○ | Signal Attention Pole Foundation (Type D) |
| ○ | Top Of Curb |
| ○ | Flow Line |

B.M. 14 R.R. Spike in 12" Willow Tree At 75' + N
Of E. Belt Line & 250' E Of E. Old Marsh Lane, ELEV. 576.30



NO SCALE

| NO. | REVISION | DATE |
|-----|-------------------------|---------|
| 2 | Chg Location 24" R.C.P. | 9-23-80 |
| 1 | Inlets & Channel | 6-13-80 |

CITY OF ADDISON
COUNTY OF DALLAS, TEXAS
 DEPARTMENT OF PUBLIC WORKS
 DRAINAGE STA. 5+00 - 10+00
BELT LINE ROAD
 MARSH LN. TO NORTH DALLAS PKWY.
 GINN, INC., CONSULTING ENGINEERS

DESIGNED - J.C.H. DRAWN - B.H. DATE - MAY - 1980 FILE
 APPROVED - H.W.G. CHECKED - S.M. SCALE - H=1"=20' V=1"=5' SHEET 32 OF