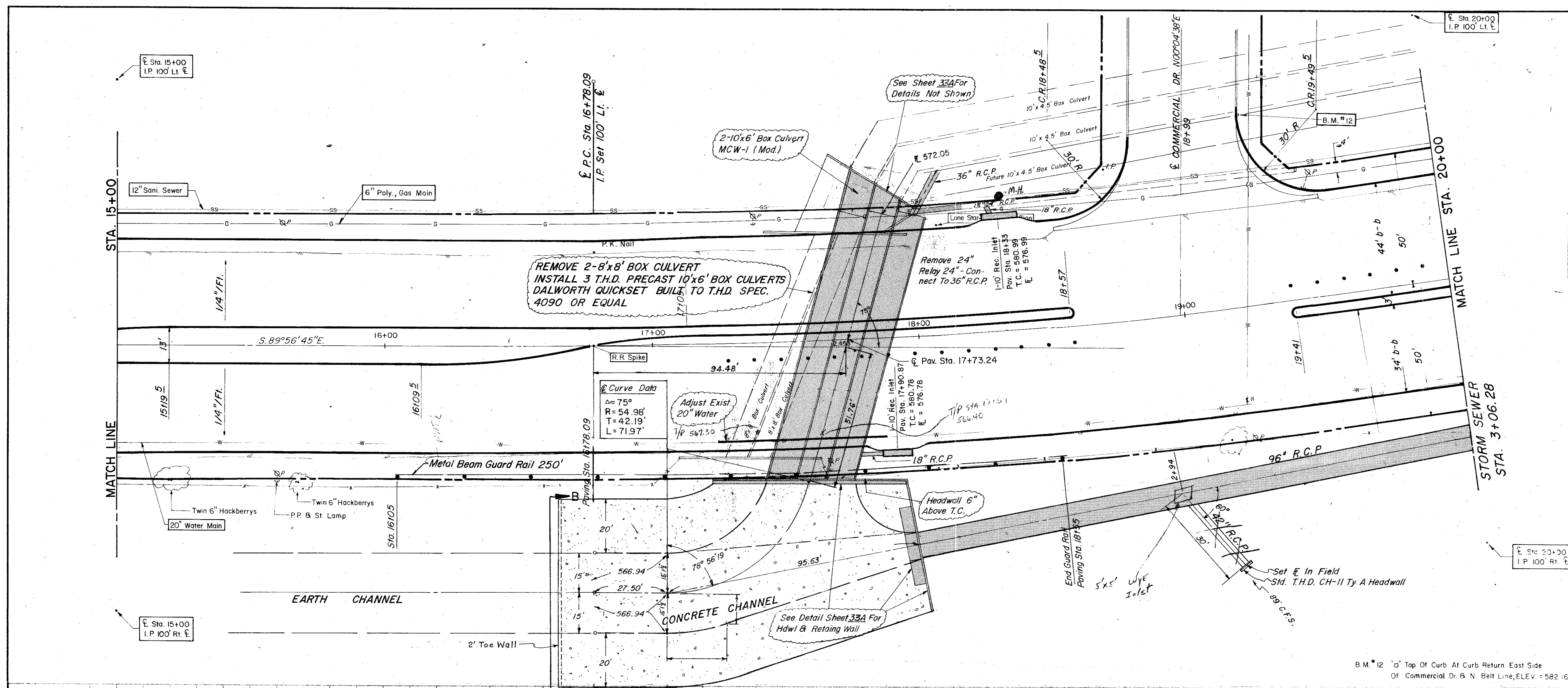
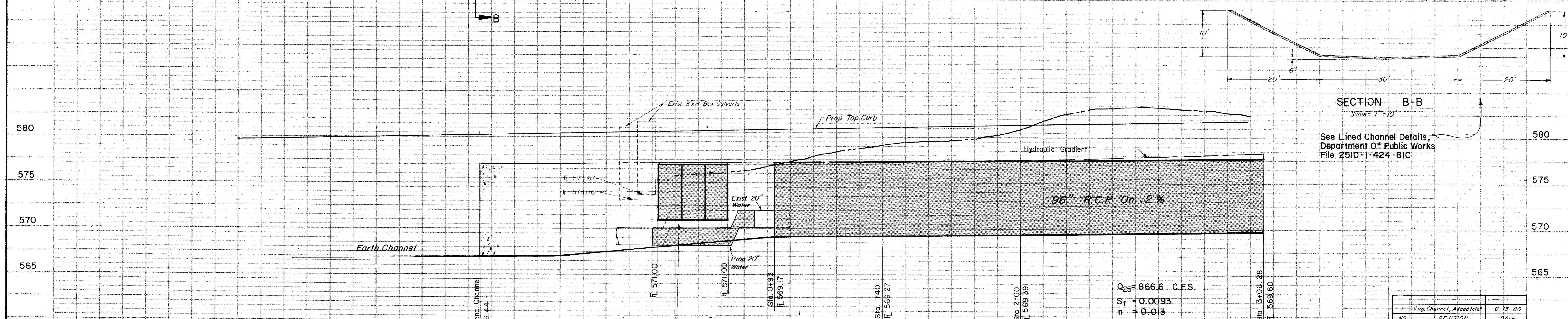


ESTIMATED QUANTITIES			
ITEM	DESCRIPTION	UNIT	QUANTITY
4090	PRECAST 10x6' CONC. BOX CVLVT	LF	315
4211	CL. A CONC. FOR HEADWALLS	CY	4.1
4321	CONC. RETAINING WALLS (CL. III)	CY	64.4
437	18" R.C.P. Channel	SY	1055
46513	9" R.C.P. (CL. III)	LF	213
4791	Adjust 20" Water Main	LF	43.0
4901	Remove 24" R.C.P. 2'x8'x8'	LF	1.0
4902	Remove 24" R.C.P. 2'x8'x8'	LF	1.0
496.4	REMOVE 24" R.C.P. CONC. TO 3" R.C.P.	SY	100
496.5	REMOVE CVLVEET WINGWALLS	SY	100
496.6	FOOTING PARAPET (STA 17+35)	LF	12
496.7	REMOVE 24" R.C.P.	LF	12
440.1	Reinf. Steel Headwall	LF	23
440.2	Reinf. Steel Headwall	LF	23
441.1	REINFORCED CONC. RETAINING WALL (CL. III)	LF	12
441.2	REINFORCED CONC. RETAINING WALL (CL. III)	LF	12
440.5	REINFORCED CONC. BOX CVLVT (8'x8')	LF	364
500	Metel Guard Rail	LF	280
442.1	8" REINF. CONC. DIV. WALL (10x6')	LF	1
443.1	30" R.C.P. (CL. III)	LF	23
441.4	CONC. PARAPET (CL. C) (8'x8' BOX CVLVT)	LF	4.2
445.6	42" R.C.P. (CL. III)	LF	30
442.5	10x6' OVAL BOX CVLVT - THD. MCW-I (MOD)	LF	1
443.1	18" R.C.P. (CL. III)	LF	11
472.2	10" REC. INLET	EA	2

LEGEND	
□	Spot Work
○	Iron Pin
○	Monument
○	Gas Meter
○	Gas Valve
○	Gas Line
○	Power Pole (Typical Pole Symbol)
○	Power Line
○	Gas Wire Anchor
○	Telephone Line
○	Water Meter
○	Water Valve
○	Water Line
○	Fire Hydrant
○	Manhole
○	Sanitary Sewer Line
○	Fence Line
○	Flow Direction Indicator
○	Property or Right-of-Way Line (DASH)
○	Existing Line
○	Traffic Pole
○	Metel Arm Pole Foundation (Type A or B)
○	Pole Foundation (Type C)
○	Signal Illumination Pole Foundation (Type D)
○	Top of Curb
○	Flow Line



B.M. 12 "d" Top of Curb At Curb Return East Side Of Commercial Dr & N. Belt Line, ELEV. = 582.16



CITY OF ADDISON
COUNTY OF DALLAS, TEXAS
 DEPARTMENT OF PUBLIC WORKS
 DRAINAGE STA. 15+00 - 20+00
 BELT LINE ROAD
 MARSH LN. TO NOTH DALLAS PKWY.
 GINN, INC., CONSULTING ENGINEERS

DESIGNED - J.C.H.	DRAWN - S.M.	DATE - MAY-1980	FILE
APPROVED - HWG	CHECKED - B.H.	SCALE - H=1"=20' / V=1"=5'	SHEET 33 OF