

C.I. - SURVEYOR  
 $\Delta = 24^{\circ}07'30''$   
 $R = 300'$   
 $T = 64.11'$   
 $L = 125.73'$

Q CURVE DATA  
 $\Delta = 27^{\circ}29'00''$   
 $R = 1909.86'$   
 $T = 467.05'$   
 $L = 916.11'$

Sta. 30+00  
 I.P. 100' Lt. E

| ITEM   | DESCRIPTION                        | UNIT | QUANTITY |
|--------|------------------------------------|------|----------|
| 447.1  | 18" RCP CI III                     | LF   | 30.0     |
| 447.2  | 21" RCP CI III                     | LF   | 21.0     |
| 465.7  | 48" RCP CI III                     | LF   | 12.0     |
| 465.10 | 60" RCP CI III                     | LF   | 143.0    |
| 465.11 | 60" RCP CI III                     | LF   | 24.0     |
| 465.12 | 72" RCP CI III                     | LF   | 310.0    |
| 465.13 | 96" RCP CI III                     | LF   | 53.0     |
| 475.4  | 10 Rec. Inlet                      | Ea.  | 1.0      |
| 475.5  | Adjust 8" Water Main               | LF   | 2.0      |
| 475.6  | 8" Castile Iron Trough Storm Sewer | LF   | 15.0     |
| 470.7  | Mod. 5 Type 'Y' Inlet              | Ea.  | 1.0      |

- LEGEND
- Bench Mark
  - Iron Pin
  - Monument
  - Gas Meter
  - Gas Valve
  - Gas Line
  - Power Pole (Typical Pole Symbol)
  - Power Line
  - Guy Wire Anchor
  - Telephone Line
  - Water Meter
  - Water Valve
  - Water Line
  - Fire Hydrant
  - Manhole
  - Sanitary Sewer Line
  - Fence Line
  - Flow Direction Indicator
  - Property or Right-of-Way Line (ROW)
  - Easement Line
  - Traffic Pole Box
  - Mark Iron Pole Foundation (Type A or B)
  - Pedestal Pole Foundation (Type C)
  - Signal Illumination Pole Foundation (Type D)
  - Top of Curb
  - Flow Line

Storm Sewer Curve Data  
 $\Delta = 27^{\circ}07'30''$   
 $R = 1969.86'$   
 $T = 475.19'$   
 $L = 932.57'$

R.C.P. 96" ST177  
 $R = 999.68'$   
 $\Delta = 4^{\circ}04'33''$   
 $T = 35.22'$   
 $L = 70.40'$

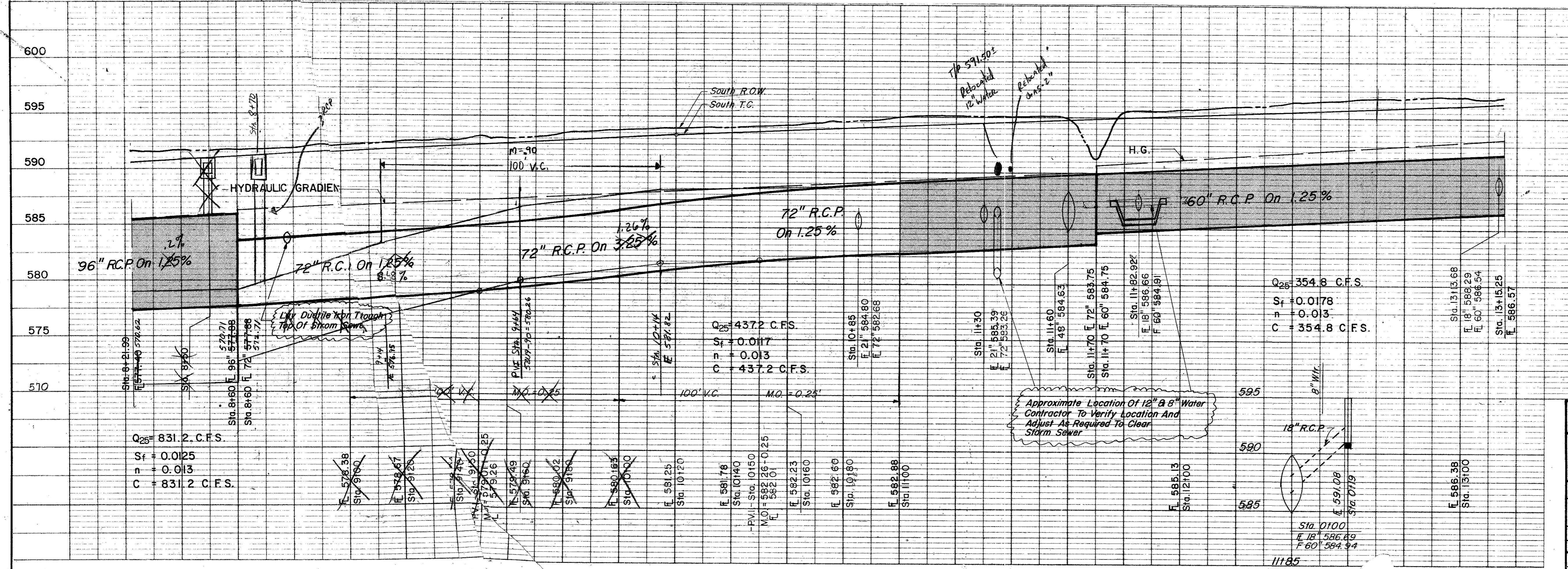
R.C.P. 72" ST177  
 $R = 999.68'$   
 $\Delta = 4^{\circ}04'33''$   
 $T = 35.22'$   
 $L = 70.40'$

Storm Sewer R.C.P. ST177  
 $R = 999.68'$   
 $\Delta = 4^{\circ}04'33''$   
 $T = 35.22'$   
 $L = 70.40'$

Storm Sewer Curve Data  
 $\Delta = 27^{\circ}29'00''$   
 $R = 1849.86'$   
 $T = 452.37'$   
 $L = 887.33'$

Remove 8 Stack in City of Addison Yard 120' LF of 36" R.C.P. & Headwall

B.M. #11 "o" Top Of Curb At Curb Return East Side Of Surveyor Blvd & N. Of Belt Line, ELEV. = 596.16



CITY OF ADDISON  
 COUNTY OF DALLAS, TEXAS  
 DEPARTMENT OF PUBLIC WORKS  
 DRAINAGE STA. 25+00-30+00  
 BELT LINE ROAD  
 MARSH LN. TO NORTH DALLAS PKWY.  
 GINN, INC., CONSULTING ENGINEERS  
 DESIGNED - J.C.H. DRAWN - S.M. DATE - MAY 1980 FILE  
 APPROVED - H.W.G. CHECKED - B.H. SCALE - H=1"=20' V=1"=5' SHEET 35 OF