

Curve Data  
 $\Delta = 27^\circ 29' 00''$   
 $R = 1909.86'$   
 $T = 467.05'$   
 $L = 916.11'$

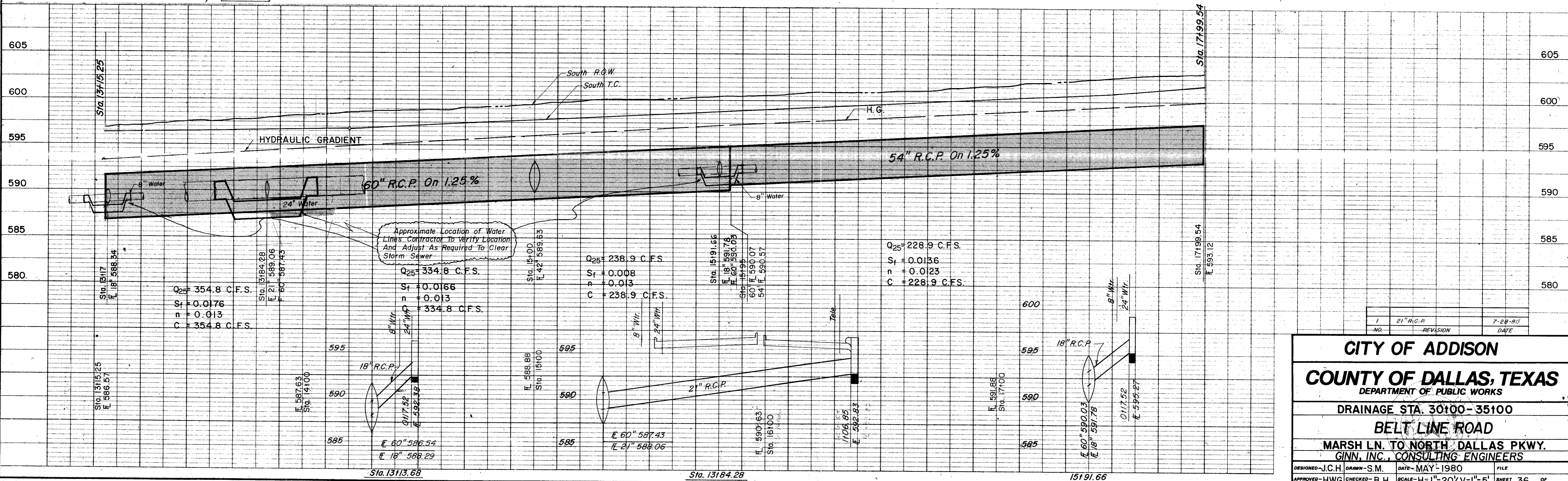
Sta 35+00  
 I.P. 100' Lt. E

ESTIMATED QUANTITIES			
ITEM	DESCRIPTION	UNIT	QUANTITY
465.1	18" R.C.P. Cl III	LF	40.0
465.2	21" R.C.P. Cl III	LF	115.0
465.3	42" R.C.P. Cl III	LF	13.0
465.4	54" R.C.P. Cl III	LF	275.0
465.5	60" R.C.P. Cl III	LF	275.0
470.2	10" Rec. Inlet-comp'l. 3/4" p.l.	LF	2.0
479.3	Adjust 24" Water Main	LF	40.0
479.4	Adjust 8" Water Main	LF	60.0

LEGEND

- Blank Mark
- Iron Pin
- Monument
- Gas Meter
- Gas Valve
- Gas Line
- Power Pole (Typical Pole Symbol)
- Power Line
- Telephone Line
- Guy Wire Anchor
- Water Meter
- Water Valve
- Water Line
- Fire Hydrant
- Manhole
- Sanitary Sewer Line
- Fence Line
- Flow Direction
- Property or Right-of-Way Line (ROW)
- Easement Line
- Traffic Post Box
- Mass Arm Pole Foundation (Type A or B)
- pedestal Pole Foundation (Type C)
- Signal Illumination Pole Foundation (Type D)
- Top Of Curb
- Flow Line

Storm Sewer Curve Data  
 $\Delta = 27^\circ 29' 00''$   
 $R = 1849.86'$   
 $T = 452.37'$   
 $L = 887.33'$



CITY OF ADDISON  
 COUNTY OF DALLAS, TEXAS  
 DEPARTMENT OF PUBLIC WORKS  
 DRAINAGE STA. 30+00-35+00  
 BELT LINE ROAD  
 MARSH LN. TO NORTH DALLAS PKWY.  
 GINN, INC., CONSULTING ENGINEERS

DESIGNED - J.C.H. DRAWN - S.M. DATE - MAY 1980 FILE  
 APPROVED - HWG CHECKED - B.H. SCALE - H=1"=20' V=1"=5' SHEET 36 OF