

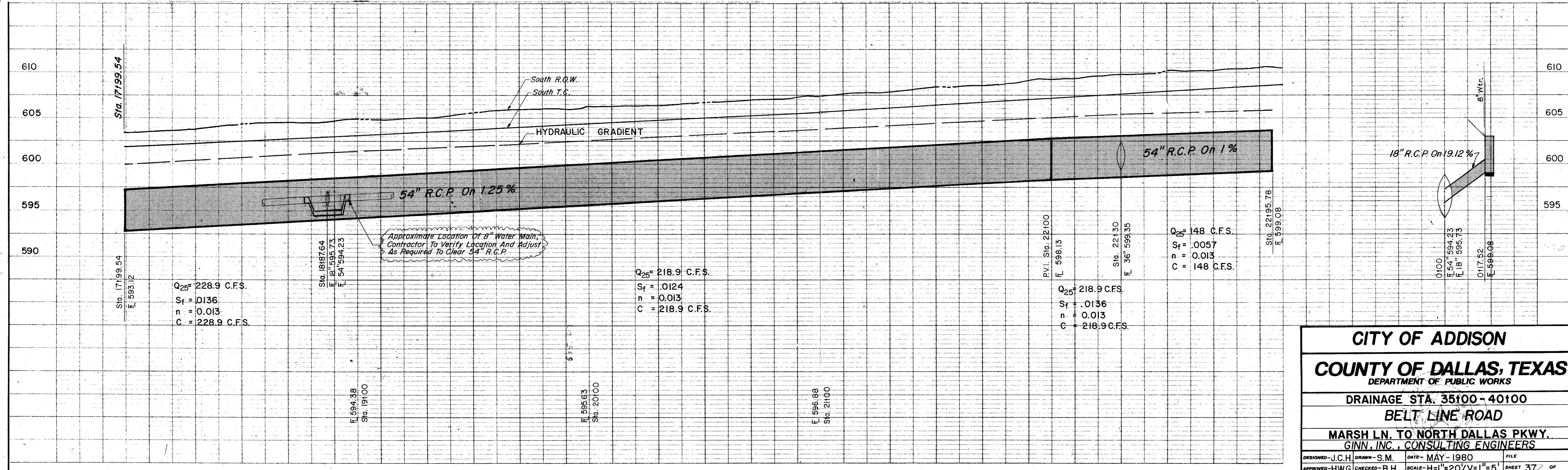
ESTIMATED QUANTITIES			
ITEM	DESCRIPTION	UNIT	QUANTITY
455.1	18" R.C.P. (11)	LF	20.0
465.9	36" R.C.P. (1)	LF	20.0
465.9	54" R.C.P. (1)	LF	20.0
470.2	10" Pipe, inlet, 10' in dia.	EA	1.0
479.4	24" Water Main	LF	20.0

LEGEND	
□	Bench Mark
○	Iron Pin
○	Mound
○	Gas Meter
○	Gas Valve
○	Gas Line
○	Power Pole (Typical Pole Symbol)
○	Power Line
○	Cup Wire Anchor
○	Telephone Line
○	Water Meter
○	Water Valve
○	Water Line
○	Fire Hydrant
○	Manhole
○	Sanitary Sewer Line
○	Fence Line
○	Flow Direction Indicator
○	Property or Right-of-Way Line (R.O.W.)
○	Center Line
○	Traffic Post Box
○	Block Arm Pole Foundation (Type A or B)
○	Pedestal Pole Foundation (Type C)
○	Signal Illumination Pole Foundation (Type D)
○	Top of Curb
○	Flow Line

Storm Sewer Curve Data
 $\Delta = 27^\circ 29' 00''$
 $R = 1849.86'$
 $T = 452.37'$
 $L = 887.35'$

See Carl

B.M. 10 "a" Top of Curb At Curb Return East
 Side Of Runyon Rd. & North Of Belt Line, ELEV. = 626.00



CITY OF ADDISON
COUNTY OF DALLAS, TEXAS
 DEPARTMENT OF PUBLIC WORKS
 DRAINAGE STA. 35+00 - 40+00
 BELT LINE ROAD
 MARSH LN. TO NORTH DALLAS PKWY.
 GINN, INC., CONSULTING ENGINEERS
 DESIGNED - J.C.H. DRAWN - S.M. DATE - MAY - 1980 FILE
 APPROVED - H.W.G. CHECKED - B.H. SCALE - H=1"=20'/V=1"=5' SHEET 37 OF

CR