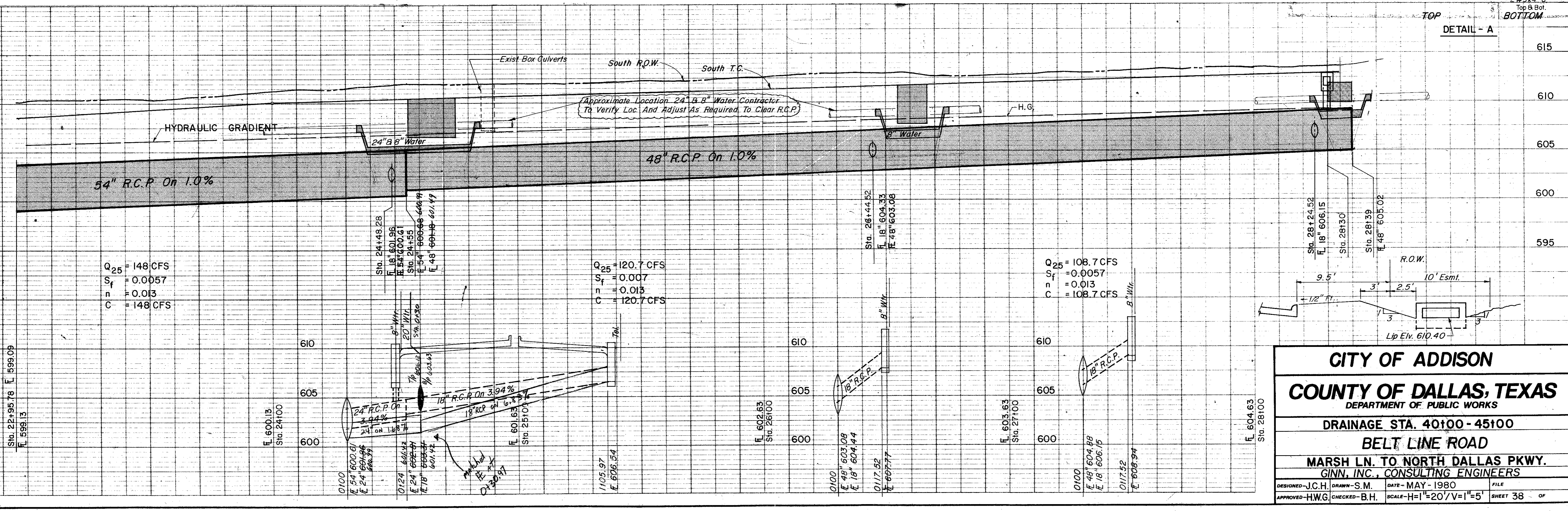


**LEGEND**

- Bench Mark
- Manhole
- Gas Meter
- Gas Valve
- Gas Line
- Power Pole (Typical Pole Symbol)
- Power Line
- Guy Wire Anchor
- Telephone Line
- Water Meter
- Water Valve
- Water Line
- Fire Hydrant
- Manhole
- Sanitary Sewer Line
- Fence Line
- Fire Direction Indicator
- Property or Right-of-Way Line (ROW)
- Easement Line
- Traffic Pull Box
- Mast Arm Pole Foundation (Type A or B)
- Pedestal Pole Foundation (Type C)
- Signal Illumination Pole Foundation (Type D)
- Top Of Curb
- Flow Line

**ESTIMATED QUANTITIES**

ITEM	DESCRIPTION	UNIT	QUANTITY
43	Rip Rap (Cont)	SV	17.0
45	18" RCP, CI III	LF	170.0
46	48" RCP, CI III	LF	385.0
46.5	54" RCP, CI III	LF	159.0
47	6" Rec. Inlet-compl. in pl.	EA	2.0
47.5	10" Rec. Inlet-compl. in pl.	EA	4.0
47.5	Adjust 8" Water Main	LF	20.0
47.5	Adjust 8" Water Main	LF	105.0
47.5	Remove Existing 6'x3' Box	LF	1.0
47.5	54" RCP & Headwall	LF	1.0
47.5	Mod. 5' Type V Inlet	EA	1.0



**CITY OF ADDISON**  
**COUNTY OF DALLAS, TEXAS**  
 DEPARTMENT OF PUBLIC WORKS  
**DRAINAGE STA. 40+00 - 45+00**  
**BELT LINE ROAD**  
**MARSH LN. TO NORTH DALLAS PKWY.**  
**GINN, INC., CONSULTING ENGINEERS**

DESIGNED - J.C.H. DRAWN - S.M. DATE - MAY - 1980 FILE  
 APPROVED - H.W.G. CHECKED - B.H. SCALE - H=1"=20' / V=1"=5' SHEET 38 OF