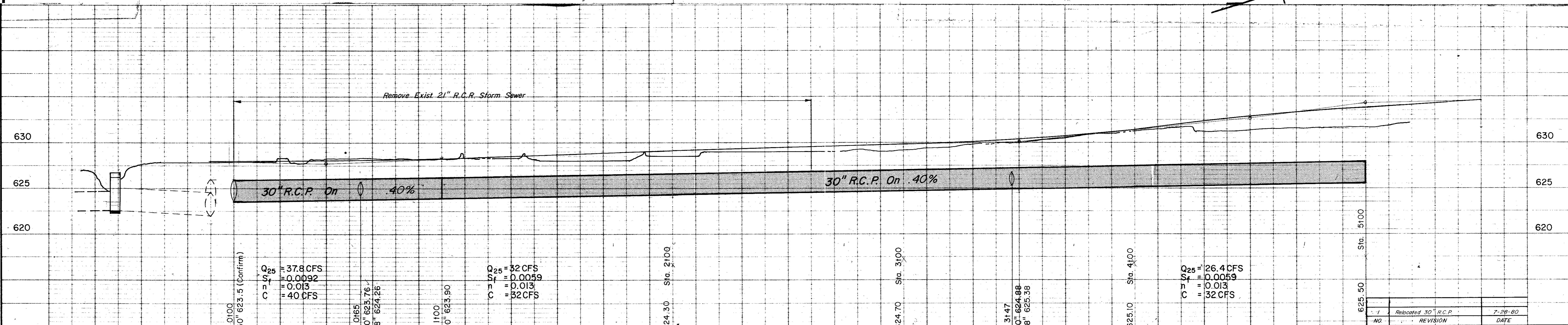
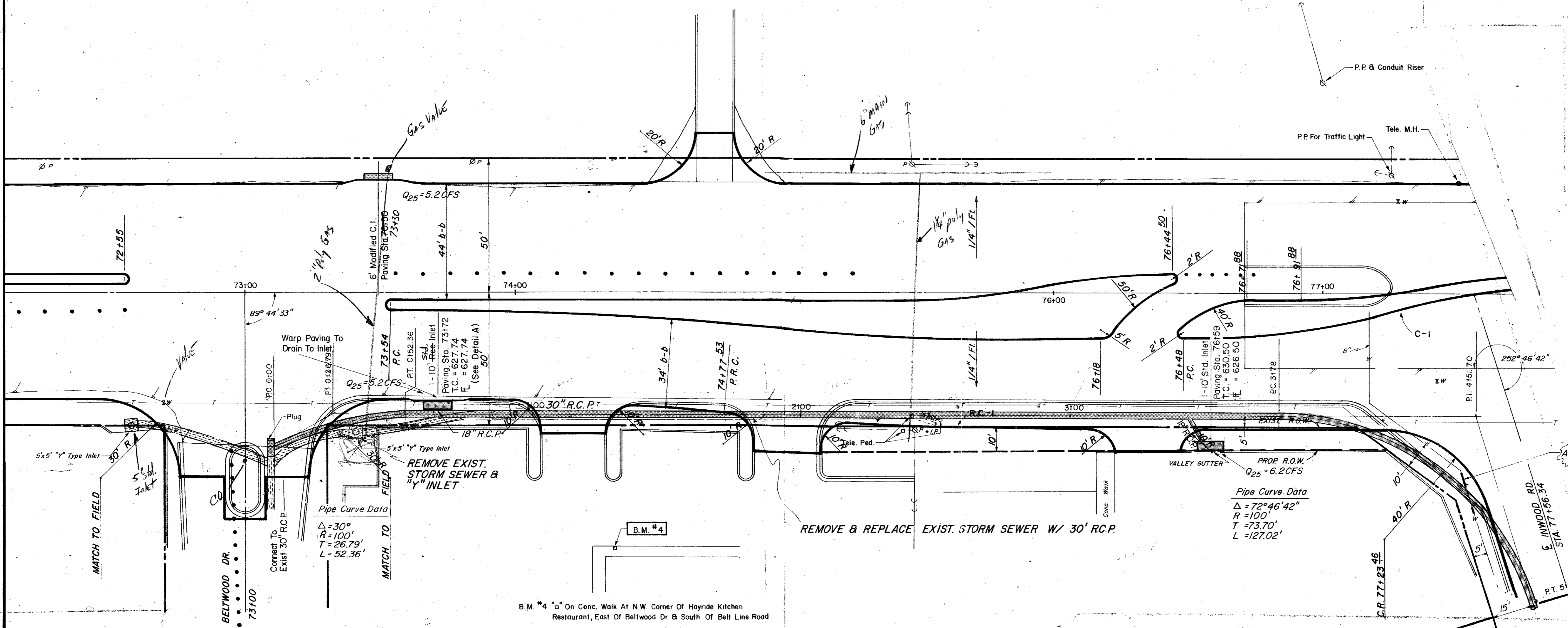


ESTIMATED QUANTITIES			
ITEM	DESCRIPTION	UNIT	QUANTITY
452.2	15" R.C.P. C.I. III	L.F.	1.0
453.2	30" R.C.P. C.I. III	L.F.	52.0
477.2	10" Rec. Inlet compl. in pl.	EA	1.0
478.4	10" Standard C.I.	EA	1.0
479.4	Adjust 8" Water Line	L.F.	15.0

LEGEND	
□	Blank Mark
○	Iron Pin
⊙	Monument
⊕	Gas Meter
⊖	Gas Valve
⊗	Gas Line
⊘	Power Pole (Typical Pole Symbol)
⊙	Power Line
⊕	Guy Wire Anchor
⊖	Telephone Line
⊗	Water Meter
⊘	Water Valve
⊙	Water Line
⊕	Fire Hydrant
⊖	Manhole
⊗	Sanitary Sewer Line
⊘	Fence Line
⊙	Flow Direction Indicator
⊕	Property or Right-of-Way Line (ROW)
⊖	Easement Line
⊗	Traffic Pole Box
⊘	Mass Arm Pole Foundation (Type A or B)
⊙	Foundation Pole Foundation (Type C)
⊕	Signal Illumination Pole Foundation (Type D)
T.C.	Top of Curb
E	Flow Line



CITY OF ADDISON
COUNTY OF DALLAS, TEXAS
 DEPARTMENT OF PUBLIC WORKS

DRAINAGE STA. 72100 - 78100
BELT LINE ROAD
MARSH LN. TO NORTH DALLAS PKWY.
GINN, INC., CONSULTING ENGINEERS

DESIGNED - J.C.H. DRAWN - S.M. DATE - MAY - 1980 FILE
 APPROVED - H.W.G. CHECKED - B.H. SCALE - H=1"=20' V=1"=5' SHEET 4 | OF