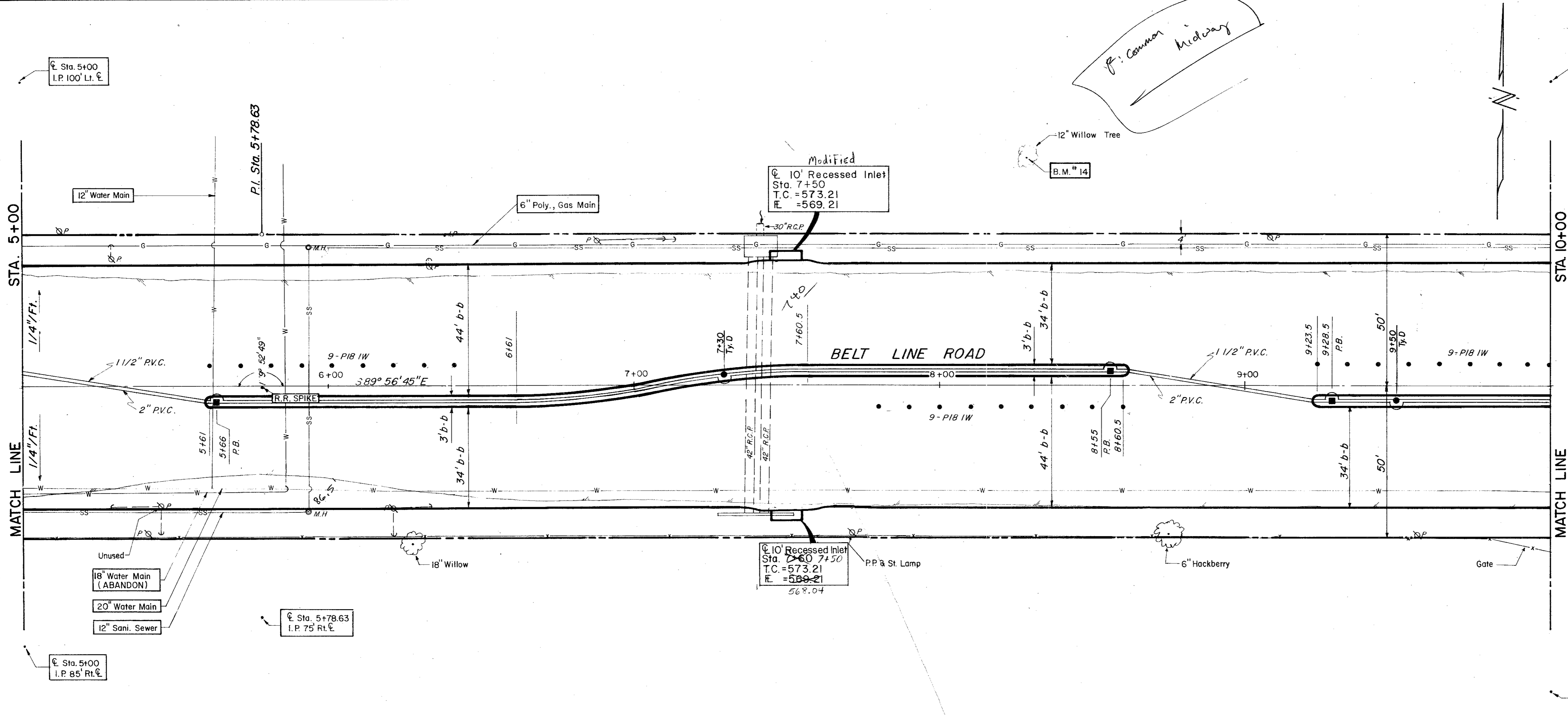
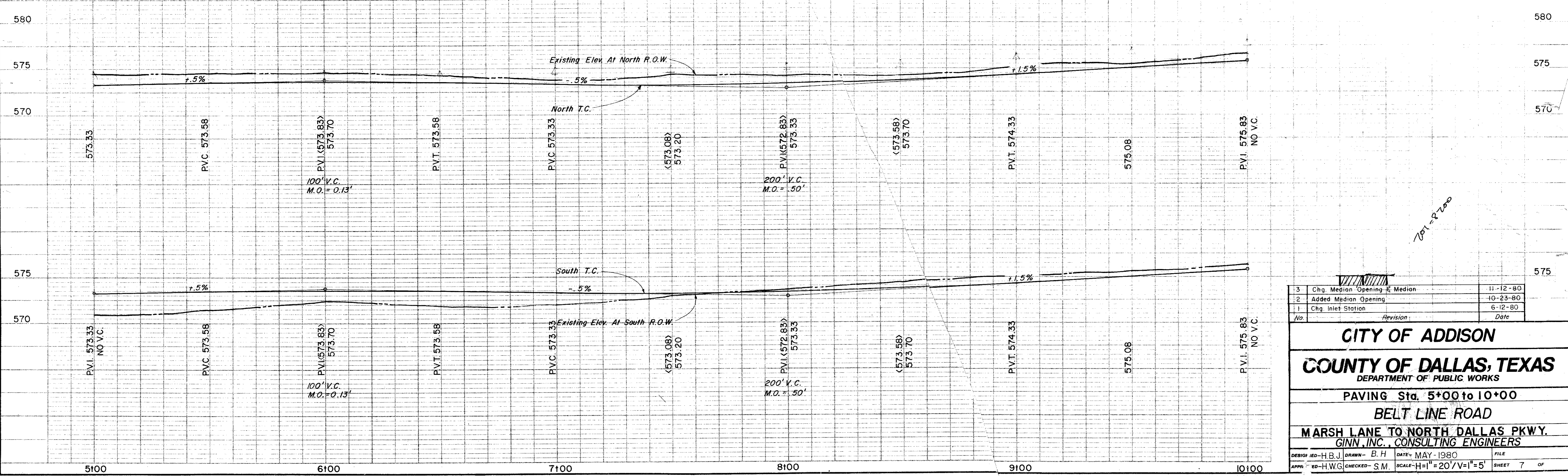


ESTIMATED QUANTITIES			
ITEM	DESCRIPTION	UNIT	QUANTITY
100	Prepare Roadway R.O.W	Sta.	5
104.1	Remove Old Concrete, Pavement & Median	SY	
104.2	Sawed Break-Out Groove	LF	
110	Unclassified Road Excavation (Dens Cont.)	CY	3937
160	Placing 4" Topsoil	CY	79.44
248	6" Flex Base (Dens Cont) (Ty A, Gr 2, Cl 3)	CY	
260.1	Lime (Ty A) Slurry Method	Ton	50.00
260.2	6" Lime Treated Subgrade (Dens Cont)	SY	4000
340.1	3" Hot Mix Asphalt (Ty D) Resurf Shoulder	Ton	91.68
340.2	6" Hot Mix Asphalt (Ty B)	Ton	
360.1	8" Conc Pavement (3000 PSI)	SY	4374.70
360.2	6" Conc Monolithic Curb (3000 PSI)	LF	1704
360.3	4" Non-Reinf Conc in Median (2000 PSI)	SY	125.33
479.2	Adjust Manhole	EA	1
522	Conc Curb & Gutter Class A	LF	
524	Conc Driveways, Appr 5" Reinf Conc (3000 PSI)	SY	
630.1	Foundation (Ty A) Traffic Sig In Place	EA	
630.2	Foundation (Ty B) Traffic Sig In Place	EA	
630.3	Foundation (Ty C) Traffic Sig In Place	EA	
630.4	Foundation (Ty D) Illumination	EA	2
640.1	1 1/2" PVC Conduit, Furnish & Install	LF	504
640.2	2" PVC Conduit, Furnish & Install	LF	504
640.3	3" PVC Conduit, Furnish & Install	LF	
640.4	Pull Box, Complete In Place	EA	3
752.1	Traffic Buttons - Single Refl Ty P15 White	EA	48
752.2	Traffic Buttons - Single Refl Ty P18 White	EA	27
754.1	Traffic Buttons - Nonrefl, Ty P7 White	EA	240

LEGEND	
□	Bench Mark
○	Top Pin
○	Manhole
○	Gas Meter
○	Gas Valve
○	Gas Line
○	Power Pole (Typical Pole Symbol)
○	Power Line
○	Gay Wire Anchor
○	Telephone Line
○	Water Meter
○	Water Valve
○	Water Line
○	Fire Hydrant
○	Manhole
○	Sanitary Sewer Line
○	Force Line
○	Flow Direction Indicator
○	Property or Right-of-Way Line (Dashed)
○	Easement Line
○	Traffic Pull Box
○	Mark Area Pole Foundation (Type A or B)
○	Pedestal Pole Foundation (Type C)
○	Signal Illumination Pole Foundation (Type D)
○	Top of Curb
○	Flow Line



B.M. #14 R.R. Spike in 12' Willow Tree At 75' ± N. Of E. Belt Line @ 250' E. Of E. Old Marsh Lane, ELEV. = 576.32



3	Chg. Median Opening & Median	11-12-80
2	Added Median Opening	10-23-80
1	Chg. Inlet Station	6-12-80
No.	Revision	Date

**CITY OF ADDISON**  
**COUNTY OF DALLAS, TEXAS**  
 DEPARTMENT OF PUBLIC WORKS  
 PAVING Sta. 5+00 to 10+00  
**BELT LINE ROAD**  
 MARSH LANE TO NORTH DALLAS PKWY.  
 GINN, INC., CONSULTING ENGINEERS

DESIGN: ED-H.B.J. DRAWN: B.H. DATE: MAY-1980 FILE  
 APPR: ED-H.W.C. CHECKED: S.M. SCALE: H=1"=20' V=1"=5' SHEET 7 OF