

### TEST HOLE DATA SHEET



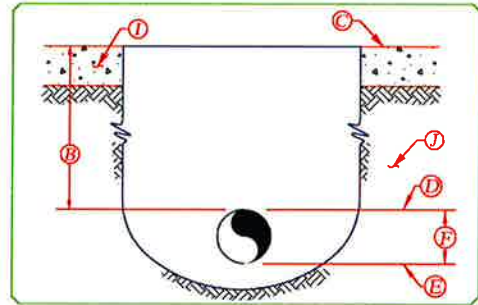
Halff Associates, Inc.  
12225 Greenville Ave. Suite 200  
Dallas, Texas 75243  
Tel: 214.572.2272  
Fax: 214.572.2273

Halff Project # 29350      Test Hole # 1  
Work Authorization # N/A      Utility: GAS  
CSJ # N/A      Date: 9/16/13  
City/ County Name: ADDISON/DALLAS      Weather: CLOUDY  
Highway # BELTLINE RD.  
Highway Limits: MARSH LN. TO MIDWAY RD.

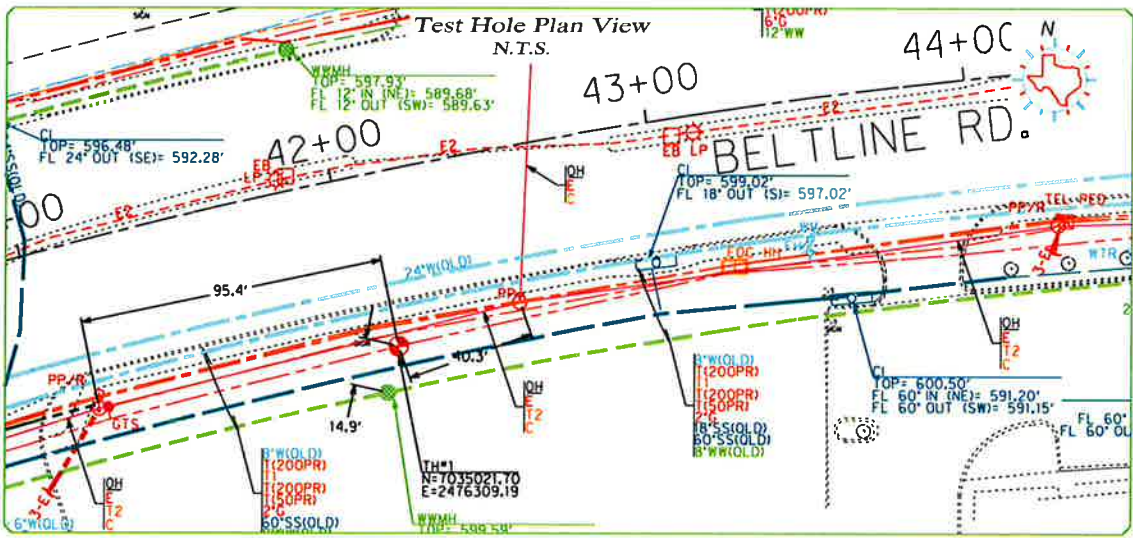
#### Test Hole Data

- (A) Approx. Sta. 42+10.2      Offset: 54.70'
- Offset pulled from: BASELINE
- (B) Measured Depth of Hole: 1.90'
- (C) Surface Elevation: 599.11'
- (D) Elev. @ Top of Utility: 597.21'
- (E) Elev. @ Bottom of Utility: 597.04' (CALC.)
- (F) Size of Utility: 2"
- (G) Utility Material: POLYETHYLENE
- (H) Utility Condition: GOOD
- (I) Thickness of Pvmt.: N/A
- Type of Pvmt., Base, etc: N/A
- (J) Description of soil: CLAY

#### Test Hole Profile



Unit of Measure: English X Metric



#### Field Notes or Comments:

- MEASUREMENTS TAKEN FROM:
- 1) T.H. TO POWER POLE W/ RISER (95.4')
  - 2) T.H. TO WASTEWATER MANHOLE (14.9')
  - 3) T.H. TO POWER POLE (40.3')

OWNER: ATMOS ENERGY

#### Legend:

- TH TEST HOLE
- WWMH WASTEWATER MANHOLE
- PP POWER POLE
- PP/R POWER POLE W/ RISER

Certification: I hereby certify that the information shown hereon is correct to the best of my knowledge and belief.

### TEST HOLE DATA SHEET



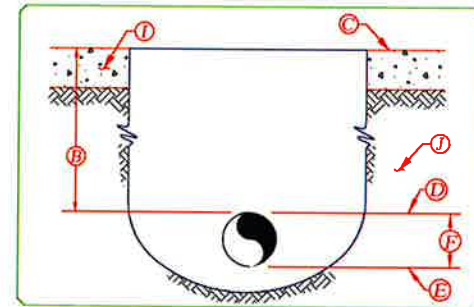
Halff Associates, Inc.  
12225 Greenville Ave. Suite 200  
Dallas, Texas 75243  
Tel: 214.572.2272  
Fax: 214.572.2273

Halff Project # 29350      Test Hole # 2  
Work Authorization # N/A      Utility: STORM SEWER  
CSJ # N/A      Date: 9/9/13  
City/ County Name: ADDISON/DALLAS      Weather: SUNNY  
Highway # BELTLINE RD.  
Highway Limits: MARSH LN. TO MIDWAY RD.

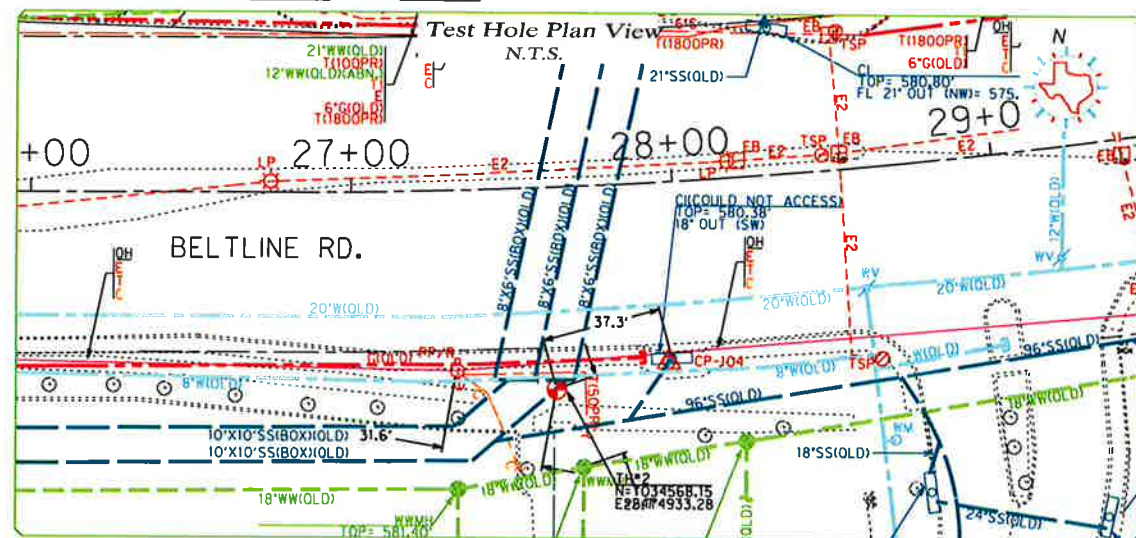
#### Test Hole Data

- (A) Approx. Sta. 27+61.7      Offset: 63.04' RT
- Offset pulled from: BASELINE
- (B) Measured Depth of Hole: 3.72'
- (C) Surface Elevation: 581.28'
- (D) Elev. @ Top of Utility: 577.56'
- (E) Elev. @ Bottom of Utility: 567.56' (CALC.)
- (F) Size of Utility: 10'X10'
- (G) Utility Material: RCB
- (H) Utility Condition: GOOD
- (I) Thickness of Pvmt.: N/A
- Type of Pvmt., Base, etc: N/A
- (J) Description of soil: ROCK

#### Test Hole Profile



Unit of Measure: English X Metric



#### Field Notes or Comments:

- MEASUREMENTS TAKEN FROM:
- 1) T.H. TO POWER POLE W/ RISER (31.6')
  - 2) T.H. TO CURB INLET (37.3')
  - 3) T.H. TO WASTEWATER MANHOLE (25.7')

OWNER: CITY OF ADDISON

#### Legend:

- TH TEST HOLE
- WWMH WASTEWATER MANHOLE
- CI CURB INLET
- PP/R POWER POLE W/ RISER

Certification: I hereby certify that the information shown hereon is correct to the best of my knowledge and belief.



*Ry Lewis*  
10/23/13

FIRM REGISTRATION NUMBER: 312

NO.	REVISION	BY	DATE

ADDISON TOWN OF ADDISON  
DALLAS COUNTY, TEXAS

BELT LINE ROAD  
UNDERGROUND ELECTRICAL

SUBSURFACE UTILITY ENGINEERING

HALFF 1201 NORTH BOWSER ROAD, RICHARDSON, TEXAS 75081-2276  
TEL (214) 346-6200 FAX (214) 739-0095

PROJECT	DESIGN	DRAWN	DATE	FILE	SHEET
29350	HALFF	HALFF	OCTOBER 2013	SH-08-29350	SU-9