

FOR PROPOSED FRANCHISE UTILITIES SEE TELECOM RELOCATION PLAN SHEETS

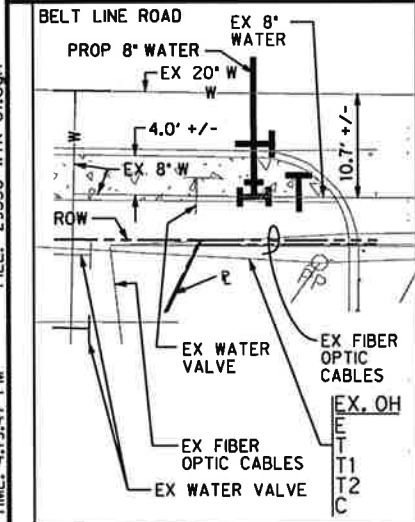
CROSSING	UTILITY	APPROX EX GROUND ELEV	EX UTIL (APPROX. FL ELEV)	PROP 8" W (FL)	COMMENT
X1	EX 18" RCP	581.6	574	577.5	SEE NOTE 1
X2	EX 8" WW	581.6	572.5	576.7	SEE NOTE 2

LOCATION	DISTANCE TO NEAREST EX VALVE (FT)
①	122
②	490
③	69

STA 25+83.72, 104.14' RT BELT LINE ROAD
 INSTALL:
 8"x8" CUT IN TEE
 CONNECT TO EX 8" W
 2-8" GATE VALVES
 N:7034523.54
 E:2474752.93

EXISTING UTILITY LOCATIONS SHOWN ARE SCHEMATIC IN NATURE AND MAY NOT ACCURATELY REFLECT THE SIZE AND LOCATION OF EACH PARTICULAR UTILITY. SOME UTILITY LINES MAY NOT BE SHOWN. CONTRACTOR SHALL ASSUME RESPONSIBILITY FOR ACTUAL FIELD LOCATION AND PROTECTION OF ALL EXISTING UTILITIES WHETHER SHOWN OR NOT. CONTRACTOR SHALL ALSO ASSUME RESPONSIBILITY FOR REPAIRS TO EXISTING UTILITIES, WHETHER SHOWN OR NOT, DAMAGED BY CONTRACTOR'S ACTIVITIES. DIFFERENCES IN HORIZONTAL OR VERTICAL LOCATION OF EXISTING UTILITIES SHALL NOT BE A BASIS FOR ADDITIONAL COMPENSATION. CALL 1-800-344-8377 TWO WORKING DAYS PRIOR TO CONSTRUCTION FOR ONSITE LOCATIONS.

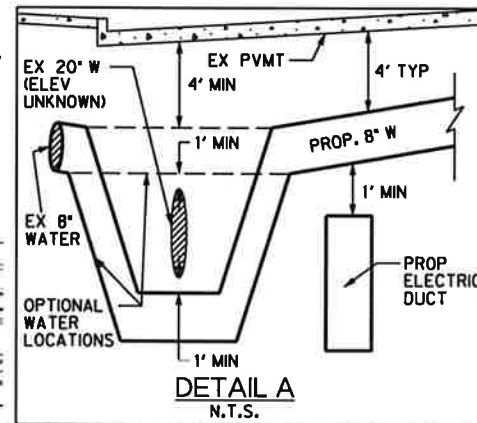
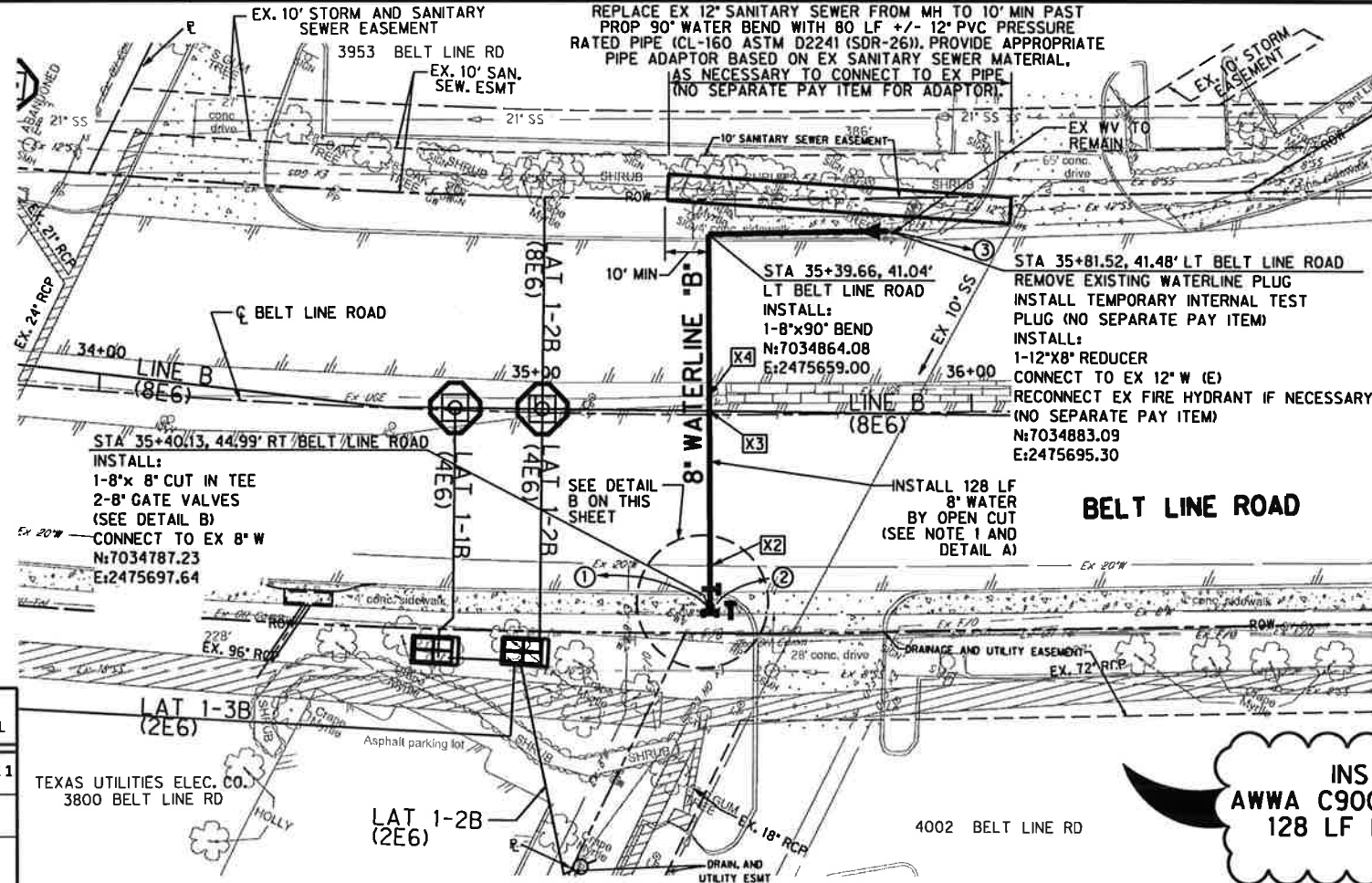
**INSTALL 291 LF 8" PVC WATER PIPE
 AWWA C900 (DR14)/ASTM D3139/ASTM F477
 BY OPEN CUT 4.0' MIN COVER (UNLESS
 OTHERWISE NOTED) (NO PROFILE)**



DETAIL B
N.T.S.

LOCATION	DISTANCE TO NEAREST EX VALVE (FT)
①	6
②	1300
③	260

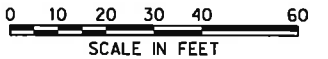
CROSSING	UTILITY	APPROX EX GROUND ELEV	UTIL ELEV	8" W PROP. FL
X2	EX 20" W	590.6	UNKNOWN	SEE NOTE 1
X3	PROP BE6 DUCT	591.5	580.5 (TOP)	4' MIN. COVER
X4	EX UGE	592	UNKNOWN	4' MIN. COVER



**INSTALL 8" PVC WATER PIPE
 AWWA C900 (DR14)/ASTM D3139/ASTM F477
 128 LF BY OPEN CUT (4.0' MIN COVER)
 (NO PROFILE)**

USER: dnl299
 OFFICE: RCH
 PROJECT: 29350
 FILE: 29350 WTR 01.dwg
 TIME: 4:19:47 PM
 DATE: 11/6/2013

BELT LINE ROAD



LEGEND

- PROPOSED FIRE HYDRANT
- PROPOSED WATER LINE BY OTHER THAN OPEN CUT
- PROPOSED WATERLINE BY OPEN CUT
- PROPOSED VALVE
- PROPOSED MANHOLE OVER EXISTING 24" WATER
- CUT AND PLUG EX. WATER MAIN

NOTES:

- 1) 3.0' MIN. COVER AT EX. STORM SEWER CROSSING. MINIMUM OF 1.0' OF CLEARANCE BETWEEN PROPOSED WATER AND EXISTING STORM.
- 2) CROSSING TO MEET TCEQ STANDARDS FOR CROSSING EXISTING NON PRESSURE RATED WASTEWATER MAIN. CENTER ONE SEGMENT OF PIPE OVER WASTEWATER MAIN SO THAT THE JOINTS OF THE WATERLINE PIPE ARE EQUIDISTANT AND AT LEAST NINE FEET HORIZONTALLY FROM CENTERLINE OF WASTEWATER MAIN. MINIMUM 2.0' OF CLEARANCE BETWEEN PROPOSED WATER AND EXISTING WASTEWATER MAIN. IF THE EXIST. WASTEWATER MAIN OR LATERAL IS DISTURBED OR SHOWS SIGNS OF LEAKING IT SHALL BE REPLACED FOR AT LEAST NINE FT (18' TOTAL) IN BOTH DIRECTION WITH AT LEAST 150 PSIPRESSURE RATED PIPE.
- 3) CARRIER PIPE TO BE SUPPORTED AT FIVE FOOT INTERVALS WITH SPACERS OR FILLED TO THE SPRING LINE WITH WASHED SAND OR GROUT. ENDS TO BE SEALED WITH CEMENT GROUT OR MANUFACTURED SEALERS PER TCEQ REQUIREMENTS.

NOTES:

- 1) CONTRACTOR TO DETERMINE HORIZONTAL AND VERTICAL ELEVATION OF EX 20" W PRIOR TO CONSTRUCTION. INSTALL 8" WATER WITH MIN 1' OF VERTICAL CLEARANCE WITH EX 20" WATER. UTILIZE 4-8"x45" VERTICAL BENDS IF NECESSARY TO LOWER WATER UNDER 20" W. (SEE DETAIL A)
- 2) CONTRACTOR TO INSTALL TEMPORARY INTERNAL TEST PLUGS AS NECESSARY TO MEET TESTING REQUIREMENTS (NO SEPARATE PAY ITEM).



K.J. Keay, P.E. 11/7/2013
 Signature of Registrant Date
 FIRM REGISTRATION NUMBER: 312

NO.	REVISION	BY	DATE
HALFF 1201 NORTH BOWSER ROAD, RICHARDSON, TEXAS 75081-2275 TEL (214) 346-8200 FAX (214) 739-0085			
PROJECT	DESIGN	DRAWN	DATE
29350	HALFF	HALFF	NOV, 2013
FILE	SHEET		
29350 WTR 01	WTR-1		