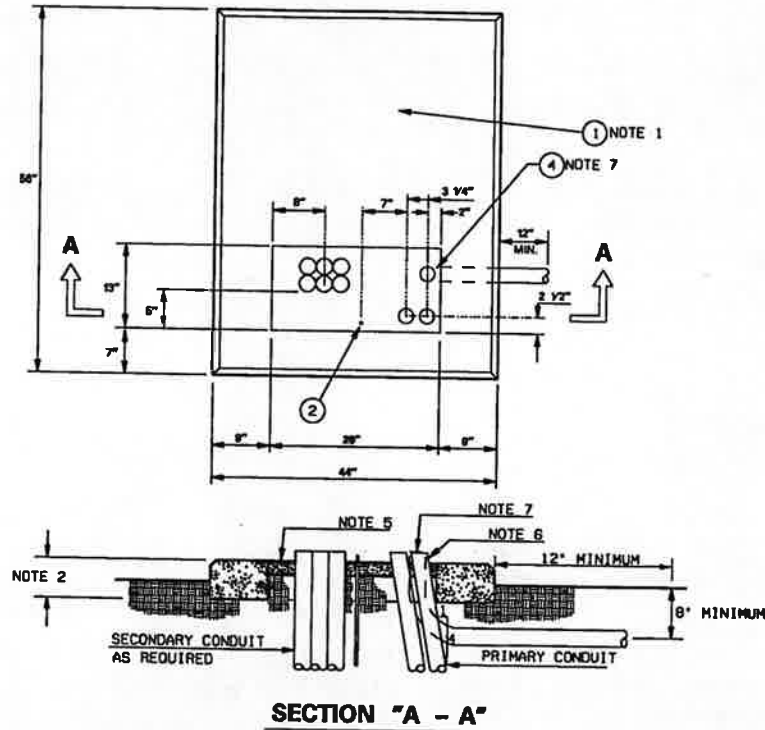


205 - 155
12 - 08

TRANSFORMER PAD - PRECAST SINGLE PHASE DEADFRONT (TYPE III)

205 - 155
12 - 08



NOTES:

1. A PRECAST CONCRETE PAD SHALL BE USED UNLESS LIFTING EQUIPMENT IS UNAVAILABLE OR CANNOT ACCESS THE SITE. USE POLYMER PADS ONLY WHEN SETTING PAD BY HAND.
2. THIS DIMENSION IS 8 INCHES FOR PRECAST CONCRETE PAD AND 3 1/4 INCHES FOR POLYMER CONCRETE PADS.
3. REFERENCE STANDARD 202-360 FOR FOREIGN UTILITY COMPANY EQUIPMENT GROUND.
4. PIERS SHALL BE INSTALLED UNDER PAD WHEN DIRT HAS BEEN DISTURBED UNDER THE LOAD BEARING AREA OF THE PAD. REFERENCE STANDARD 205-165 FOR PIER INSTALLATION.
5. GROUTING DETAIL SEE STANDARD DRAWING 206-180.
6. THE CONDUITS MUST BE INSTALLED TO ENSURE THAT THE TOTAL MAXIMUM BENDING RADIUS FOR THE PRIMARY CABLE DOES NOT EXCEED 8 INCHES. (ANGLE PRIMARY CONDUIT WHENEVER POSSIBLE).
7. THE 3" FLEX CONDUIT (TGN 308205) SHALL HAVE A MINIMUM OF 8" OF COVER AS IT EXITS ON THE RIGHT HAND SIDE OF THE TRANSFORMER PAD.

ITEM	QTY	DESCRIPTION	TSN/REF	CU	MU
1	1	PAD, TRANSFORMER, PRECAST CONCRETE 44 x 56 IN.	304037	PPRCTI	
1	1	PAD, TRANSFORMER, POLYMER CONCRETE 44 x 56 IN.	319332	PPROCTI	
2	1	ROD, GROUND 5/8" x 8' CU	204-360		
4	3	CONDUIT, HDPE, FLEX, 3"	308205		

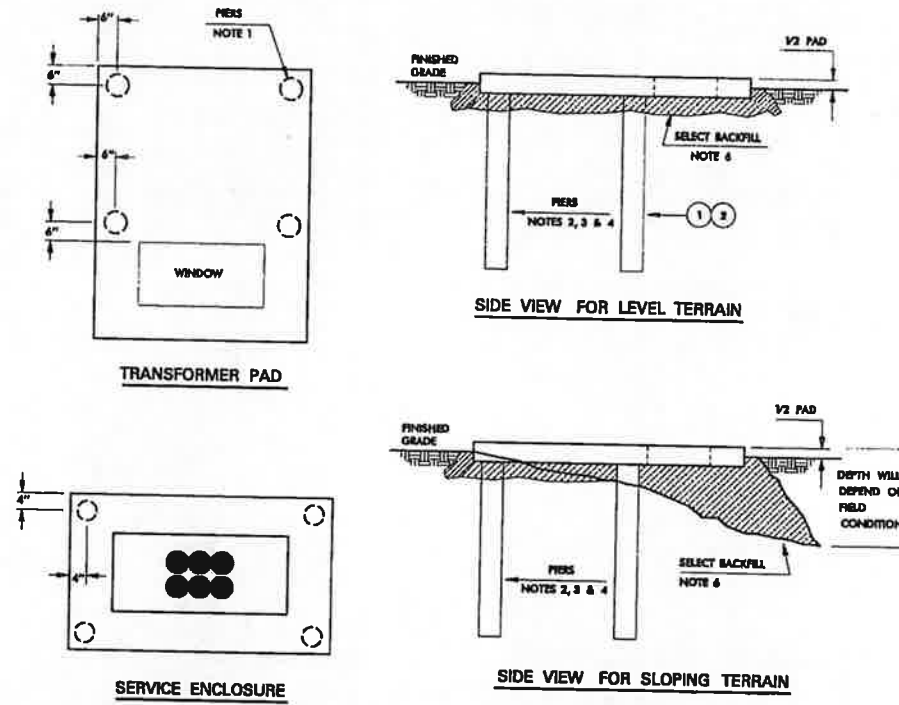
APPROVED BY



205 - 165
09 - 05

SINGLE PHASE TRANSFORMER PAD AND 44" X 52" X 24" SERVICE ENCLOSURE PIER INSTALLATION

205 - 165
09 - 05



NOTES:

1. PIERS SHALL BE INSTALLED UNDER PAD WHEN DIRT HAS BEEN DISTURBED UNDER THE LOAD BEARING AREA OF PAD. TAMP BACKFILL (95% COMPACTION) TO TOP OF PIER SUPPORTS (USE DITCH SPOIL WHEN POSSIBLE).
2. CUT SUPPORT PIERS FROM SECTION OF 4 IN. PVC CONDUIT.
3. PLACE PIERS AS SHOWN. FILL WITH CONCRETE.
4. TOP OF PIERS SHOULD BE LEVEL AND 3 IN. BELOW FINAL GROUND LEVEL TO A DEPTH OF: (1) MINIMUM OF 36 IN. IN UNDISTURBED EARTH (SOIL), (2) BOTTOM OF DITCH, (3) BIDDING OF SOIL ROCK.
5. AFTER PLACING PAD, FILL VOIDS UNDER AND AROUND PAD WITH SELECT DITCH SPOIL.
6. ALL BACKFILL UNDER AND AROUND PAD SHALL BE WELL TAMPED.

ITEM	QTY	DESCRIPTION	TSN/REF	CU	MU
1	1	CONDUIT, PVC, 4 IN.	287867	PIPK	
2	1	CONCRETE (AS REQUIRED)			

APPROVED BY



Ch Moran, P.E. 10-24-13
Signature of Registrant Date

FIRM REGISTRATION NUMBER: 312

NO.	REVISION	BY	DATE

Addison! TOWN OF ADDISON
DALLAS COUNTY, TEXAS

BELT LINE ROAD
UNDERGROUND ELECTRICAL

SINGLE PHASE TRANSFORMER
PAD INSTALLATION DETAIL

HALFF 1201 NORTH BOWSER ROAD, RICHARDSON, TEXAS 75081-2275
TEL (214) 348-8200 FAX (214) 738-0095

PROJECT	DESIGN	DRAWN	DATE	FILE	SHEET
29350	HALFF	HALFF	OCT. 2013	29350 ELEC 30d	ELE-30