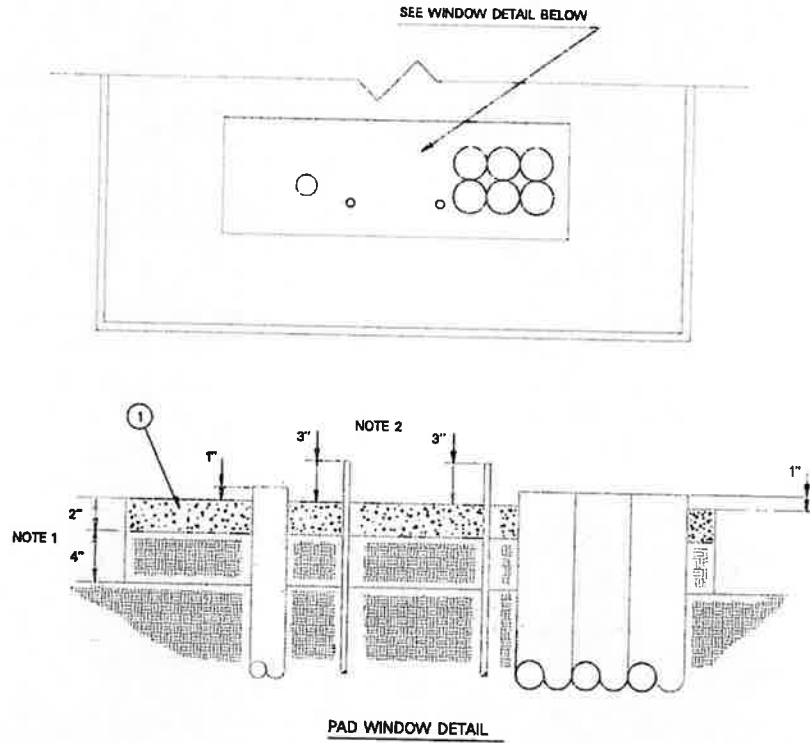


205 - 180  
12 - 93

### GROUTING DETAIL FOR TRANSFORMER PAD WINDOWS

205 - 180  
12 - 93



- NOTES:
1. FILL IN PAD WINDOW WITH 4 INCHES OF EARTH BACKFILL AND 2" OF GROUT.
  2. GROUND RODS SHALL EXTEND A MAXIMUM OF 3 INCHES ABOVE GROUTING TO ASSURE ADEQUATE DRIVEN DEPTH AND ALLOW FOR ADEQUATE CONNECTING SPACE.

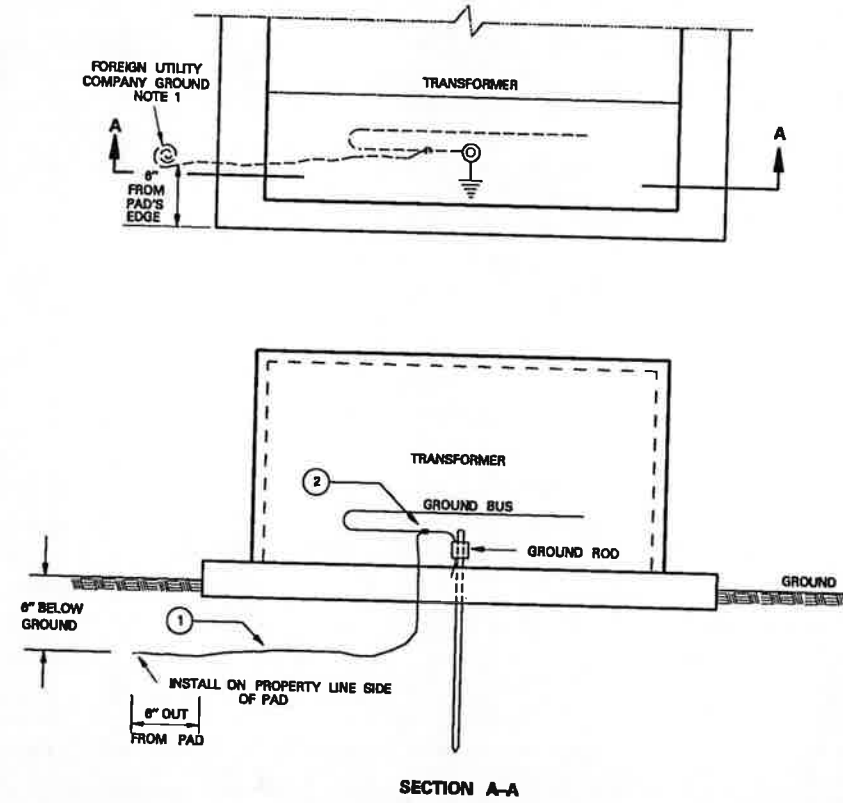
ITEM	QTY	DESCRIPTION	TSN	AUN	MACRO AUN
1	AS REQD	GROUT			

APPROVED BY **TU ELECTRIC**

202 - 350  
10 - 08

### METHOD FOR PROVIDING FOREIGN UTILITY COMPANY EQUIPMENT GROUND

202 - 350  
10 - 08



- NOTE:
1. ON NEW INSTALLATIONS, INSTALL NO. 6 S.D. BARE COPPER AS SHOWN FOR FOREIGN UTILITY COMPANY BONDING.
  2. THE NATIONAL ELECTRICAL SAFETY CODE RULE 384 C RECOMMENDS BONDING OF ALL ABOVE GROUND METALLIC POWER AND COMMUNICATIONS APPARATUS (PEDESTALS, TERMINALS, APPARATUS CASES, TRANSFORMER CASES, ETC.) THAT ARE SEPARATED BY A DISTANCE OF 6 FEET OR LESS.

ITEM	QTY	DESCRIPTION	TSN/REF	CU	MU
1	1	WIRE, #6 CU, BARE	303244		
2	1	CONNECTOR, #2 CU - #6 CU	306838	FUCE3	

APPROVED BY **TXU Electric Delivery**



*Ch Moran* Signature of Registrant  
Date **10-24-13**

FIRM REGISTRATION NUMBER: 312

NO.	REVISION	BY	DATE

**ADDISON!** TOWN OF ADDISON  
DALLAS COUNTY, TEXAS

BELT LINE ROAD  
UNDERGROUND ELECTRICAL

SINGLE PHASE TRANSFORMER  
PAD INSTALLATION DETAIL

**HALFF** 1201 NORTH BOWSER ROAD, RICHARDSON, TEXAS 75081-2275  
TEL. (214) 348-0200 FAX (214) 738-0095

PROJECT	DESIGN	DRAWN	DATE	FILE	SHEET
29350	HALFF	HALFF	OCT. 2013	29350 ELEC 31d	ELE-31